

**STATISTICAL PROFILE  
OF  
MONTCLAIR STATE COLLEGE**

Office of Institutional Research  
September 1988

## INTRODUCTION

This profile is prepared in the hope that it will contribute to a better understanding of the College.

It is the intention to periodically update this profile. Suggestions that will lead to its improvement will be gladly entertained.

Please note that occasional minor discrepancies between data in different tables are apparent discrepancies only; some of the "snapshots" were taken at different points in time. We hope this will improve in future editions.

Pat Merlo's much-valued contribution to this time-consuming effort is gladly put on record as is the contribution of the various offices that provided part of the data.

R. Gimbrere  
Director of Institutional Research

## TABLE OF CONTENTS

<u>Section I</u>	<u>Staffing</u>	Page No.
Table I-1	FT Employees by Employee Category Fall 1982 through Fall 1987	1
Graph I-2	Faculty Distribution by Rank Fall 1975, Fall 1985, Fall 1987	2
Table I-3	Ethnic Distribution - FT Staff Fall 1982 - Fall 1987	3
Table I-4	Mean Faculty Salaries by Rank and Gender, Fall 1987	5
Table I-5	Utilization of Adjunct Faculty Academic Year 1982-83 - 1986-87	6
Table I-6	Faculty Hired by Rank and Calendar Year 1982 through 1987	8
Table I-7	Faculty Hired in Period 1982-1987 by Rank and Gender	9
Table I-8	Faculty Hired in Period 1982-1987 by Rank and Ethnicity	10
<u>Section II</u>	<u>Organization Charts</u>	
II-1	President's Office	11
II-2	Division of Academic Affairs	12
II-3	Division of Administration and Finance	13
II-4	Division of Student Affairs	14
<u>Section III</u>	<u>New Student Intake</u>	
Table III-1A	New Student Intake, Academic Year 1987-1988 (excludes re-admits)	15
Graph III-1B	New Student Intake, Academic Year 1987-1988 (excludes re-admits)	16
Table III-2	New Student Intake, Academic Year 1981-82 and 1987-88	17

Table III-3	Actual and Projected Decreases in New Jersey Public High School Graduates	18
Table III-4	Applicants/Admits, Admits/Registrants and Applicants/Registrants Fall 1987 Intake	19
Graph III-5	Distribution of Class Rank, Fall 1987 FT FT Freshmen, Regular Admits	20
Graph III-6	Distribution of SAT Math Scores, 1987 MSC's Freshmen and New Jersey College Bound	21
Graph III-7	Distribution of SAT Verbal Scores, 1987 MSC's Freshmen and New Jersey College Bound	22
Table III-8	SAT Scores and High School Percentiles of Fall 1987 Freshmen, Special Admits	23
Table III-9	Mean SAT's, High School Percentiles and Academic Index, Regular Freshmen, Fall 1982-Fall 1987	24
Table III-10	Ethnic Distribution of Fall 1987 Undergraduate Intake by Student Type	25
Graph III-11	Prior Institutions of Fall 1987 Transfers, FT and PT combined	26
<u>Section IV</u>	<u>Enrollments</u>	
Graph IV-1	Headcount Enrollment by Student Type Fall 1982 through Fall 1987	27
Table IV-2	Enrollments in Special Programs, Headcount, Fall 1982 to Fall 1987	28
Table IV-3A	Ethnic Breakdown of Undergraduate Enrollment, Fall 1982 and Fall 1987	29
Table IV-3B	Ethnic Breakdown of Graduate Enrollment, Fall 1982 and Fall 1987	30
Table IV-4	Enrollment by Gender, Fall 1987	31
Table IV-5	Geographic Distribution Undergraduate Students, Fall 1987	32

Table IV-6	Geographic Distribution Graduate Students, Fall 1987	33
Graph IV-7	Percent Change in UG Headcount Enrollments, NJ by Higher Education Sector; Base Year 1976	34
Graph IV-8	Percent Change in Graduate Headcount Enrollments, NJ by Higher Education Sector; Base Year 1976	35
Table IV-9	FTE Enrollments FY82-FY88 and Enrollment Targets for FY89 and Beyond	36
<u>Section V</u>	<u>Attrition/Retention</u>	
Table V-1	Retention and Attrition of Students Who Entered as Freshmen FT Regular Admits Status in 3rd, 5th, 9th and 13th Semester	37
Table V-1A	Retention and Attrition of Students Who Entered as Freshmen FT Special Admits (Special Admits = EOF, STP and Special Talents) Status in 3rd, 5th, 9th and 13th Semester	38
Table V-2	Retention and Attrition of Students Who Entered as Freshmen PT (including non-matriculants) Status in 3rd, 5th, 9th and 13th Semester	39
Table V-3	Retention and Attrition of Students Who Entered as Transfers Full-time Status in 3rd, 5th, 9th and 13th Semester	40
Table V-4	Retention and Attrition of Students Who Entered as Transfers Part-time Status in 3rd, 5th, 9th and 13th Semester	41
Table V-5	Attrition/Retention Trends of Students Who Entered as Freshmen FT Regular Admits	42
Table V-6	Attrition/Retention Trends of Students Who Entered as Freshmen Part-time	43
Table V-7	Attrition/Retention Trends of Students Who Entered as Transfers Full-time	44

Table V-8	Attrition/Retention of Students Who Entered as Transfers Part-time	45
<u>Section VI</u>	<u>Programs/Degrees</u>	
Table VI-1	Total Undergraduate Enrollment by Major All Schools and Undeclared Students 1980/1987	46
Table VI-2	Degrees and Undergraduate Certificates Awarded Academic Years 1973-74 through 1986-87	47
Table VI-3	Undergraduate Degrees Awarded by School and Program, Academic Year 1986-87	48
Table VI-4	Graduate Degrees Awarded by School and Program, Academic Year 1986-87	50
<u>Section VII</u>	<u>Library</u>	
Table VII-1	Growth of Library Collection 1982 through 1987	52
Table VII-2	Circulation Statistics, Harry A. Sprague Library 1982 through 1987	53
<u>Section VIII</u>	<u>Financial Data</u>	
Graph VIII-1	FY88 Total Resources	55
Graph VIII-2	FY88 Operating Budget	56
Table VIII-3	Gross State Appropriations (in thousands) for Operating Budget, per FTE; (excludes School of Conservation and Challenge Grants)	57
Table VIII-4	State Appropriations (in thousands) for Operating Budget FY82 through FY89 (excludes School of Conservation and Challenge Grants)	58
Table VIII-5	Net State Appropriations (in thousands) per FTE FY82 through FY89 (excludes School of Conservation and Challenge Grants)	59

Table VIII-6	Tuition Income as Proportion of Gross Appropriations FY82 through FY89 (excludes School of Conservation and Challenge Grants)	60
Table VIII-7	Tuition Income (in thousands) per FTE FY82 through FY89	61
Table VIII-8	Financial Aid Disbursed by Type of Program and Academic Year	62
Table VIII-9	Undergraduate Financial Aid Recipients as Proportion of Headcount Enrollment	63
<u>Section IX</u>	<u>Campus Map</u>	64

Table I-1

Full-time Employees  
by  
Employee Category  
Fall 1982 through Fall 1987

<u>Employee Category</u>	<u>1982</u>	<u>1983</u>	<u>1984</u>	<u>1985</u>	<u>1986</u>	<u>1987</u>	Change	
							<u>'82</u>	<u>'87</u>
							<u>#</u>	<u>%</u>
Faculty	458	462	466	455	451	429 *	-29	-6.3
Adm/Tech/ Professional	204	204	214	212	219	229	+25	+12.3
Office/Clerical Secretarial	228	221	218	229	224	230	+2	+0.9
Crafts and Trades	50	49	53	50	50	53	+3	+6.0
Service	109	114	115	112	110	112	+3	+2.8
Safety/ Security	30	24	26	26	23	26	-4	-13.3
Total	<u>1079</u>	<u>1074</u>	<u>1092</u>	<u>1084</u>	<u>1077</u>	<u>1079</u>	No Change	

\*The decrease from 1986 to 1987 is, for a large part, temporary due to the early retirement program.

Source: Equal Opportunity/  
Affirmative Action Office Reports

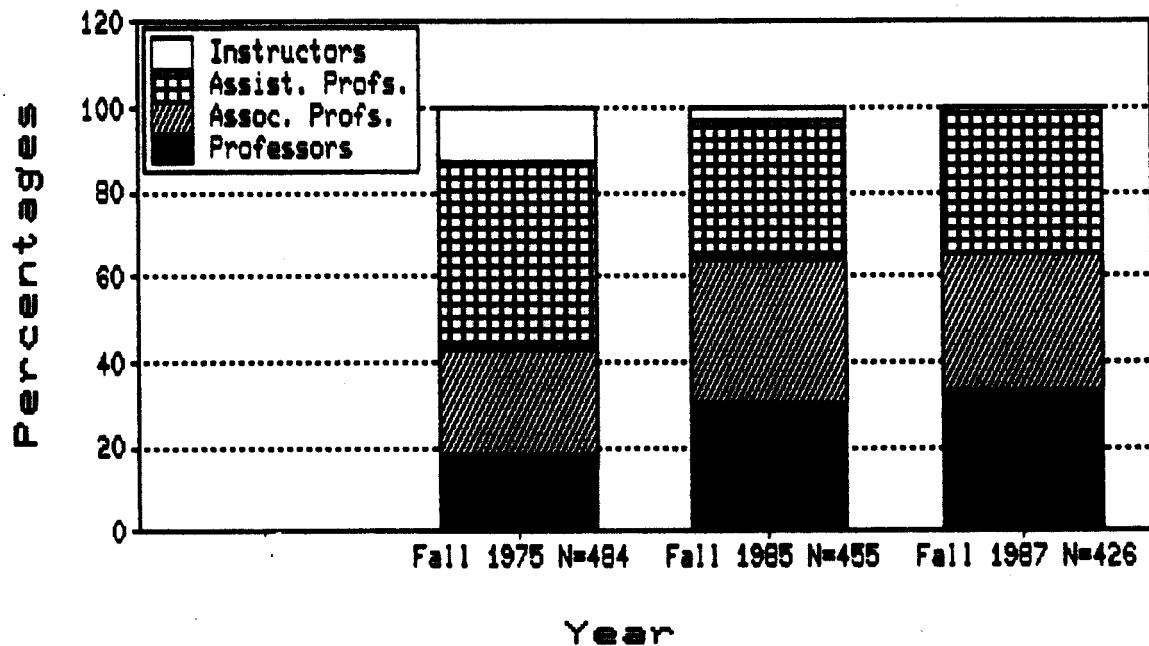
OIR, 07/88



Graph I-2

## FACULTY DISTRIBUTION BY RANK

Fall 1975, Fall 1985, Fall 1987



Rank	Fall 1975		Fall 1985		Fall 1987	
	#	%	#	%	#	%
Instructor	63	13.0%	14	3.1%	5	1.2%
Asst. Professor	213	44.0%	148	32.5%	143	33.4%
Assoc. Professor	121	25.0%	154	33.8%	136	32.0%
Professor	87	18.0%	139	30.5%	142	33.4%
Total	484	100.0%	455	100.0%	426	100.0%

Note: Approximately 80% of regular full-time faculty hold doctorates or the appropriate terminal degree.

Source: HEGIS/IPEDS Full-time Faculty Profile, Fall 1975, Fall 1985, Fall 1987  
OIR, 07/88

Table I-3

Ethnic Distribution  
Full-time Staff  
Fall 1982 - Fall 1987

<u>Job Classifications</u>	<u>White</u>		<u>Black</u>		<u>Hispanic</u>		<u>Amer. Ind. Alaskan Nat</u>		<u>Asian/Pacif. Islander</u>		<u>Total</u>	
	#	%	#	%	#	%	#	%	#	%	#	%
<u>Faculty</u>												
Fall '82	404	88.2	20	4.4	10	2.2	2	0.4	22	4.8	458	100.0%
Fall '87	376	87.6	23	5.4	11	2.6	2	0.5	17	4.0	429	100.0%
Chng. '82 - '87	-28	-6.9	+3	+15.0	+1	+10.0	NC	-	-5	-22.7	-29	-6.3%
<u>Adm/Prof/Tech</u>												
Fall '82	152	74.5	31	15.2	11	5.4	-	-	10	4.9	204	100.0%
Fall '87	161	70.3	37	16.2	15	6.6	-	-	16	7.0	229	100.0%
Chng. '82 - '87	+9	+5.9	+6	+19.4	+4	+36.4	-	-	+6	+60.0	+25	+12.3%
<u>Off/Cler/Sec</u>												
Fall '82	189	82.9	29	12.7	8	3.5	-	-	2	0.9	228	100.0%
Fall '87	170	73.9	38	16.5	20	8.7	-	-	2	0.9	230	100.0%
Chng. '82 - '87	-19	-10.1	+9	+31.0	+12	+150.0	-	-	NC	-	+2	+0.9%
<u>Crafts/Trades</u>												
Fall '82	39	78.0	11	22.0	-	-	-	-	-	-	50	100.0%
Fall '87	38	71.7	13	24.5	2	3.8	-	-	-	-	53	100.0%
Chng. '82 - '87	-1	-2.6	+2	+18.2	-	-	-	-	-	-	+3	+6.0%
<u>Service</u>												
Fall '82	58	53.2	44	40.4	6	5.5	-	-	1	0.9	109	100.0%
Fall '87	34	30.4	46	41.1	32	28.6	-	-	-	-	112	100.0%
Chng. '82 - '87	-24	-41.4	+2	+4.5	+26	+433.3	-	-	-1	-	+3	+2.8%

(continued)

Table I-3 (con'td)

**Ethnic Distribution  
Full-time Staff  
Fall 1982 - Fall 1987**

<u>Job Classifications</u>	<u>White</u>		<u>Black</u>		<u>Hispanic</u>		<u>Amer. Ind. Alaskan Nat</u>		<u>Asian/Pacif. Islander</u>		<u>Total</u>	
	#	%	#	%	#	%	#	%	#	%	#	%
<u>Safety/Security</u>												
Fall '82	19	63.3	9	30.0	2	6.7	-	-	-	-	30	100.0%
Fall '87	16	61.5	8	30.8	2	7.7	-	-	-	-	26	100.0%
Chng. '82 - '87	-3	-15.8	-1	-11.1	NC	-	-	-	-	-	-4	-13.3%
<u>Total/ All Employees</u>												
Fall '82	861	79.8	144	13.3	37	3.4	2	0.2	35	3.2	1079	100.0%
Fall '87	795	73.7	165	15.3	82	7.6	2	0.2	35	3.2	1079	100.0%
Chng. '82 - '87	-66	-7.7	+21	+14.6	+45	+121.6	NC	-	NC	-	NC	-

Source: Employee Profile by Sex and Ethnicity by Job Classification 1982, 1987  
Equal Opportunity/Affirmative Action Office  
OIR, 07/88

Table I-4

Mean Faculty Salaries  
by  
Rank and Gender  
Fall 1987

<u>Rank</u>	<u>Male</u>			<u>Female</u>			<u>Total</u>	
	<u>Salary</u>	<u>#</u>	<u>%</u>	<u>Salary</u>	<u>#</u>	<u>%</u>	<u>#</u>	<u>%</u>
Instructor	\$26,047	2	40.0	\$28,252	3	60.0	5	100.0%
Assistant Professor	33,484	82	57.3	32,588	61	42.7	143	100.0%
Associate Professor	41,712	86	63.2	40,371	50	36.8	136	100.0%
Professor	50,260	102	72.9	49,489	38	27.1	140	100.0%
<b>Total</b>	<u>\$42,127</u>	<u>272</u>	<u>64.2%</u>	<u>\$39,288</u>	<u>152</u>	<u>35.8%</u>	<u>424*</u>	<u>100.0%</u>

\*Total does not include two distinguished professors.

Source: IPEDS Full-time Faculty Profile, Fall 1987  
OIR, 07/88

Table I-5

Utilization of Adjunct Faculty  
Academic Year 1982-83 - 1986-87

<u>Department</u>	<u>Academic Year 1982-83</u>		<u>Academic Year 1986-87</u>	
	<u>Adjunct Faculty in FTE's</u>	<u>Proportion of Dept. FTE Faculty</u>	<u>Adjunct Faculty in FTE's</u>	<u>Proportion of Dept. FTE Faculty</u>
<u>School of Business Administration</u>				
Acctng. Law & Taxation	4.42	24.2%	3.79	22.6%
BEOSA	2.13	16.2%	2.00	18.4%
Economics	2.03	16.1%	5.00	33.0%
Finance & Quant. Methods	1.88	13.7%	2.42	24.1%
Management	2.04	13.4%	2.21	17.6%
Marketing	2.25	18.8%	2.25	26.0%
Total	14.75	17.4%	18.17	23.9%
<u>School of Fine and Performing Arts</u>				
Fine Arts	4.38	14.2%	3.91	12.9%
Music	1.45	5.4%	1.1	4.0%
Speech and Theatre	10.45	30.0%	14.96	42.1%
Total	16.28	17.6%	19.97	21.5%
<u>School of Humanities and Social Sciences</u>				
Anthropology	.25	3.6%	0.88	13.6%
Classics	.75	26.1%	2.63	58.1%
Commun. Sci. & Disorders	.13	0.9%	0.63	4.4%
English	13.00	25.6%	12.13	25.8%
EUGS	.25	3.3%	-	-
French	.38	4.5%	1.75	19.4%
German/Slavic	.38	10.2%	0.25	7.3%
History	.25	1.9%	0.88	6.2%

(continued)

Table I-5 (cont'd)

Utilization of Adjunct Faculty  
Academic Year 1982-83 - 1986-87

<u>Department</u>	<u>Academic Year 1982-83</u>		<u>Academic Year 1986-87</u>	
	<u>Adjunct Faculty in FTE's</u>	<u>Proportion of Dept. FTE Faculty</u>	<u>Adjunct Faculty in FTE's</u>	<u>Proportion of Dept. FTE Faculty</u>
Linguistics	3.50	53.8%	2.88	49.2%
Philosophy/Religion	1.25	10.3%	2.50	24.1%
Political Science	.63	6.7%	1.25	14.5%
Psychology	4.46	11.4%	4.00	10.9%
Sociology	4.38	29.2%	2.88	22.2%
Spanish/Italian	1.46	9.1%	8.13	35.2%
Paralegal Studies	2.57	71.4%	2.71	54.0%
<b>Total</b>	<b>33.64</b>	<b>16.0%</b>	<b>43.50</b>	<b>20.9%</b>
 <u>School of Mathematical and Natural Sciences</u>				
Biology	.99	5.8%	1.08	6.6%
Chemistry	.38	3.0%	1.01	10.3%
Math. & Computer Science	12.04	26.3%	13.19	30.3%
Physics/Geoscience	.07	0.6%	-	-
<b>Total</b>	<b>13.48</b>	<b>15.3%</b>	<b>15.28</b>	<b>18.7%</b>
 <u>School of Prof. Studies</u>				
CHS&G	.38	3.1%	0.38	3.3%
Curriculum & Teaching	.57	5.7%	1.06	11.8%
Ed. Foundations	.13	2.4%	-	-
Ed. Leadership	4.58	25.1%	4.79	26.1%
Health Professions	3.54	24.2%	3.13	25.0%
Home Economics	4.82	20.8%	6.87	29.6%
Industrial Studies	2.83	19.7%	1.56	12.9%
PERLS	1.35	6.8%	0.67	3.8%
<b>Total</b>	<b>18.20</b>	<b>15.4%</b>	<b>18.46</b>	<b>17.0%</b>
<b>College Total</b>	<b>96.35</b>	<b>16.2%</b>	<b>115.38</b>	<b>20.3%</b>

Source: Office of Academic Affairs Staffing Reports

OIR, 07/88

Table I-6  
**Faculty Hired**  
 by  
**Rank and Calendar Year**  
 1982 through 1987

<u>Rank</u>	<u>1982</u>	<u>1983</u>	<u>1984</u>	<u>1985</u>	<u>1986</u>	<u>1987</u>	<u>Total</u>
Professor	0	2	0	0	0	0	2
Associate Professor	1	4	4	1	2	1	13
Assistant Professor	23	23	18	15	9	17	105
Instructor	5	3	4	3	3	2	20
Total	<u>29</u>	<u>32</u>	<u>26</u>	<u>19</u>	<u>14</u>	<u>20</u>	<u>140</u>

Source: Equal Opportunity  
 Affirmative Action Office Reports  
 OIR, 07/88

Table I-7

Faculty Hired in Period  
1982 - 1987  
by  
Rank and Gender

	<u>Professor</u>	<u>Associate Professor</u>	<u>Assistant Professor</u>	<u>Instructor</u>	<u>Total</u>
Male	2	9	52	6	69
Female	0	4	53	14	71
Total	<u>2</u>	<u>13</u>	<u>105</u>	<u>20</u>	<u>140</u>

Source: Equal Opportunity/Affirmative Action Office Reports  
OIR, 07/88



Table I-8

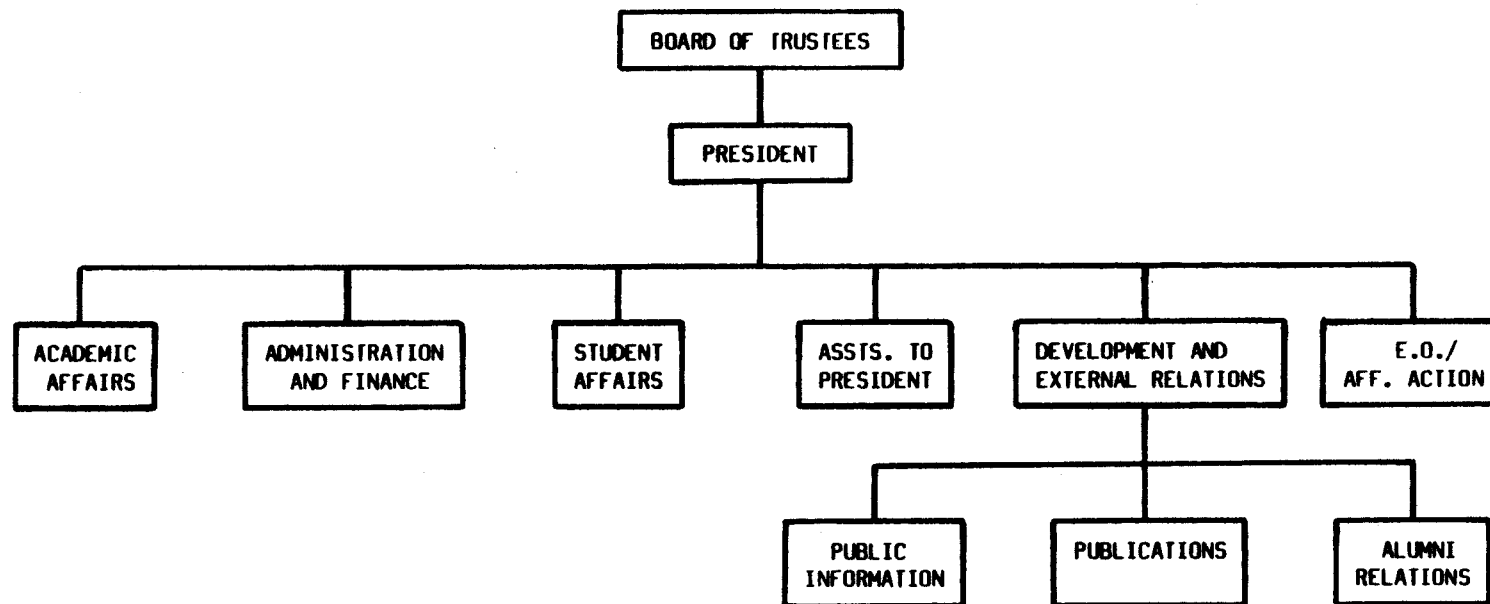
Faculty Hired in Period 1982 - 1987  
by  
Rank and Ethnicity

	<u>Professor</u>	<u>Associate Professor</u>	<u>Assistant Professor</u>	<u>Instructor</u>	<u>Total</u>
White	1	9	70	17	97
	1.0%	9.3%	72.2%	17.5%	100.0%
Black	50.0%	69.2%	66.7%	85.0%	69.3%
	1	0	19	1	21
Black	4.8%	-	90.5%	4.8%	100.0%
	50.0%	-	18.1%	5.0%	15.0%
Hispanic	0	0	8	2	10
	-	-	80.0%	20.0%	100.0%
Hispanic	-	-	7.6%	10.0%	7.1%
	0	0	0	0	0
AmerInd/AlNat	-	-	-	-	-
	-	-	-	-	-
Asian/PacIsl	0	4	8	0	12
	-	33.3%	66.7%	-	100.0%
Asian/PacIsl	-	30.8%	7.6%	-	8.6%
	2	13	105	20	140
Total	1.4%	9.3%	75.0%	14.3%	100.0%
	100.0%	100.0%	100.0%	100.0%	100.0%

Source: Equal Opportunity/  
Affirmative Action Office Reports  
OIR, 07/88

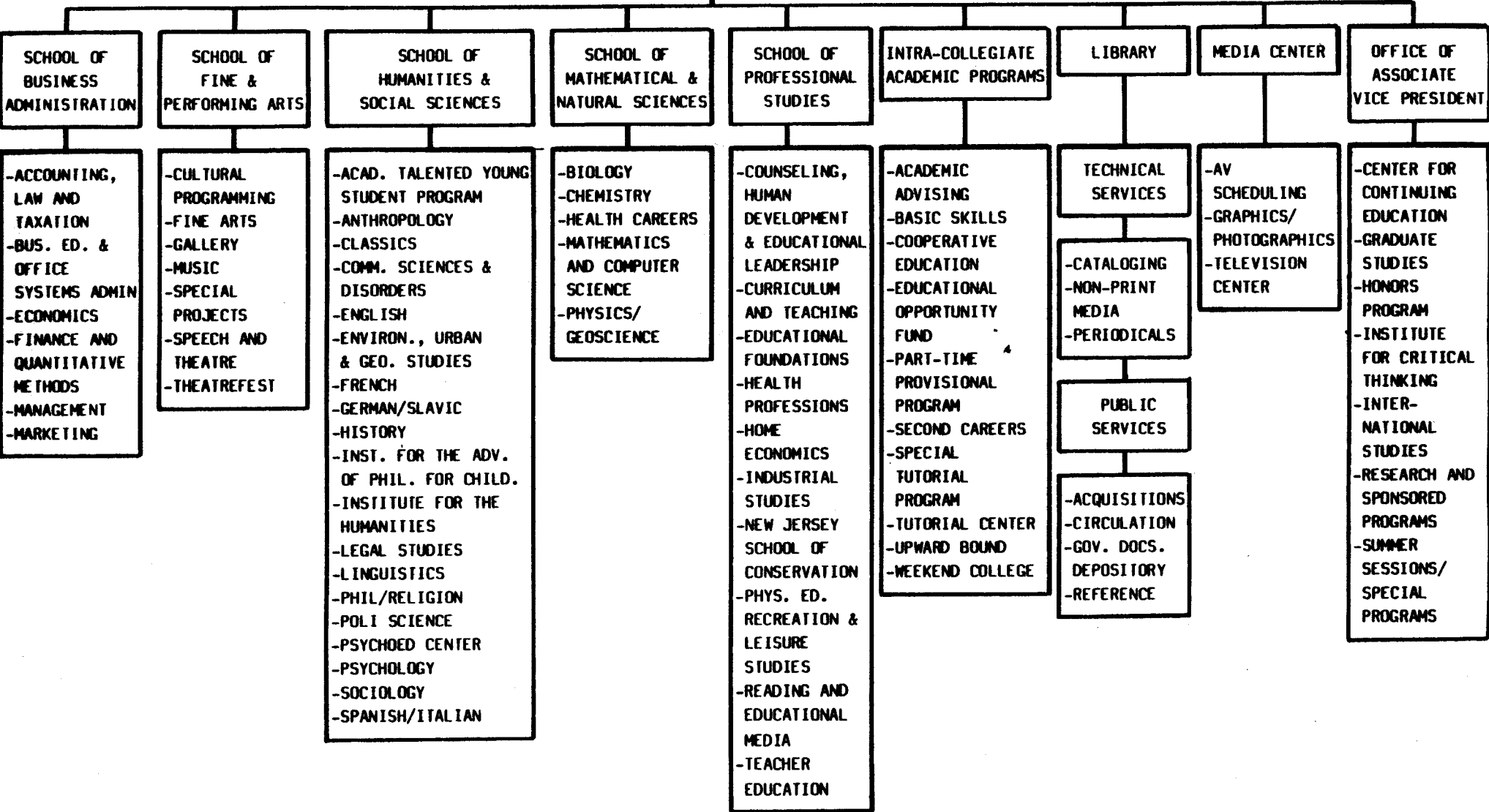
II-1

OFFICE OF THE PRESIDENT



SOURCE: OFFICE OF THE PRESIDENT  
OIR, 08/88

ACADEMIC AFFAIRS  
OFFICE OF VICE PRESIDENT



DIVISION OF ADMINISTRATION & FINANCE

ADMINISTRATION & FINANCE - OFFICE OF THE VICE PRESIDENT

DIRECTOR OF BUDGET

DIRECTOR OF INSTITUTIONAL RESEARCH

DIRECTOR OF INTERNAL AUDIT

ASSISTANT TO VICE PRESIDENT

SPECIAL ASSISTANT TO VICE PRESIDENT

ASST. VICE PRESIDENT FOR FACILITIES

MAINTENANCE  
- GROUNDS  
- BUILDINGS  
- TRADES

FACILITIES PLANNING

POLICE & SECURITY  
- SAFETY  
- PARKING

STUDENT CENTER  
- OPERATIONS  
- SCHEDULING  
- SPECIAL EVENTS

ASST. VICE PRESIDENT FOR FINANCE

BURSAR  
- CASH CONTROL  
- STUDENT ACCOUNTS

ACCOUNTING  
- GENERAL ACCOUNTS  
- ACCOUNTS PAYABLE  
- GRANTS  
- PROPERTY CONTROL

PURCHASING  
- PROCUREMENT  
- CONTRACTING

ASST. VICE PRESIDENT FOR ADMINISTRATIVE SERVICES

EMPLOYEE RELATIONS

POSITION CONTROL

PERSONNEL SERVICES  
- POSITION CLASSIFICATION  
- RECRUITMENT  
- TIME & ATTENDANCE

EMPLOYEE BENEFITS

PAYROLL SERVICES

OFFICE SERVICES  
- PRINTING  
- MAIL  
- WORD PROCESSING  
- CENTRAL STORES  
- SHUTTLE BUSES  
- MICROGRAPHICS

ASST. VICE PRESIDENT FOR INFORMATION SYSTEMS

COMPUTING SERVICES  
- ACADEMIC HARDWARE  
- ACADEMIC SOFTWARE  
- ADMINISTRATIVE HARDWARE  
- ADMINISTRATIVE SOFTWARE

TELECOMMUNICATIONS

OFFICE AUTOMATION

COMPUTER MAINTENANCE

CHIEF OPERATING OFFICER FOR FACULTY STUDENT COOPERATIVE

DORM PROJECT ACCOUNTS

STUDENT CENTER AUXILIARY SERVICES

BOOKSTORE

ANNEX/PLAYFIELDS ACCOUNT

DIVISION OF STUDENT AFFAIRS

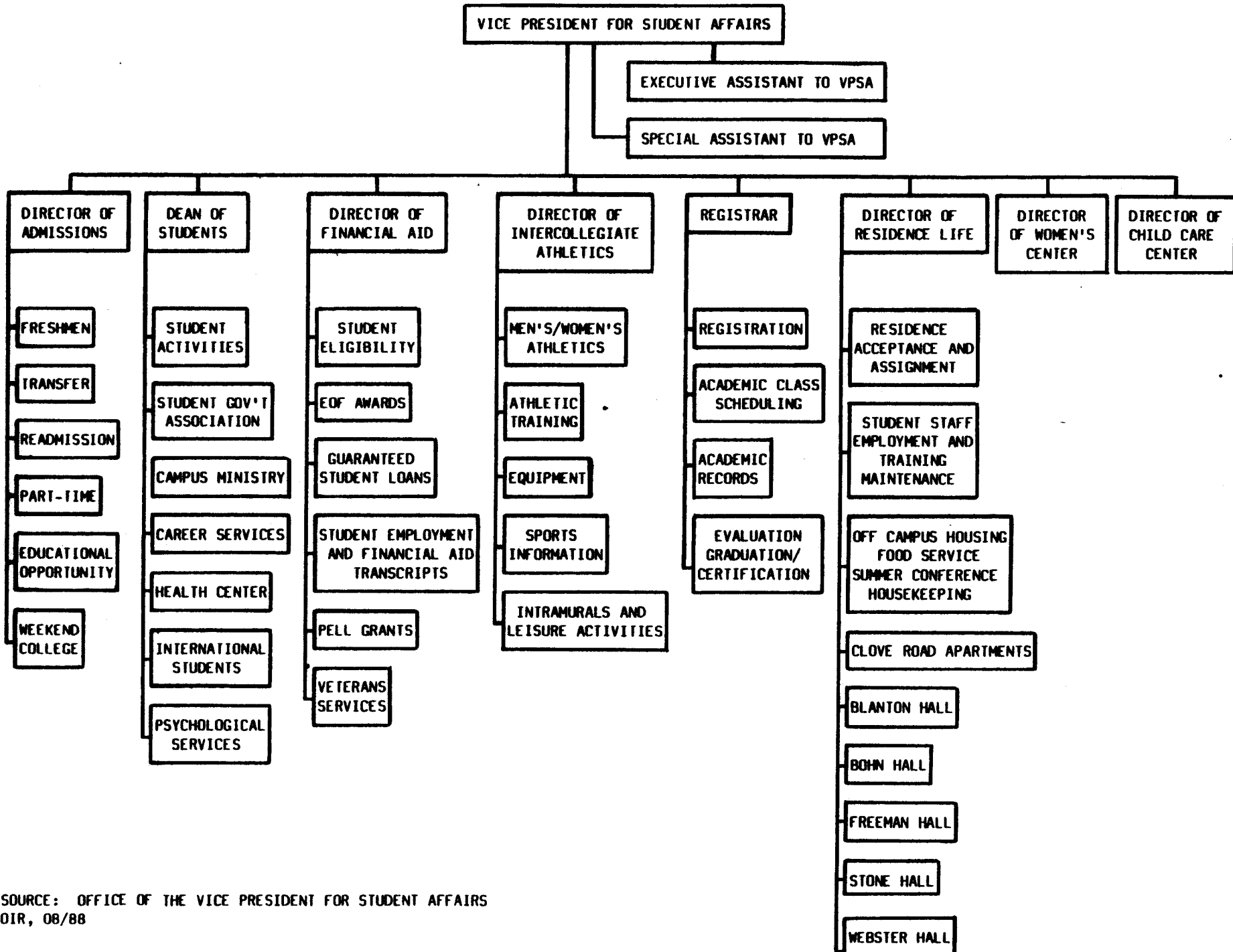


Table III-1A

New Student Intake Academic Year 1987-1988  
(excludes re-admits)

	<u>Fall 1987</u>		<u>Spring 1988</u>		<u>Total AY87-88</u>	
	#	%	#	%	#	%
<b>FT Undergraduates</b>						
Freshmen (reg. adm.)	991	29.1	46	4.3	1037	23.2%
Transfers	460	13.5	130	12.3	590	13.2
Non-Class.	30	0.9	7	0.7	37	0.8
Freshmen (sp. adm.)						
EOF 159)			-)			
STP 76)	283	8.3	-) 2	0.2	285	6.4
Sp.Tal. 48)			2)			
Weekend	47	1.4	9	0.8	56	1.3
Sub-Total						
FT Undergraduates	<u>1811</u>	<u>53.2%</u>	<u>194</u>	<u>18.3%</u>	<u>2005</u>	<u>44.9%</u>
<b>PT Undergraduates</b>						
Freshmen	372	10.9	100	9.4	472	10.6%
Transfers	237	7.0	130	12.3	367	8.2
Non-Class	201	5.9	112	10.6	313	7.0
Weekend	6	0.2	5	0.5	11	0.2
Sub-Total						
PT Undergraduates	<u>816</u>	<u>24.0%</u>	<u>347</u>	<u>32.7%</u>	<u>1163</u>	<u>26.0%</u>
Total Undergraduate	2627	77.2%	541	51.0%	3168	70.9%
Graduate FT & PT	778*	22.8%	520	49.0%	1298	29.1%
Grand Total, Undergr. & Grad.	<u>3405</u>	<u>100.0%</u>	<u>1061</u>	<u>100.0%</u>	<u>4466</u>	<u>100.0%</u>

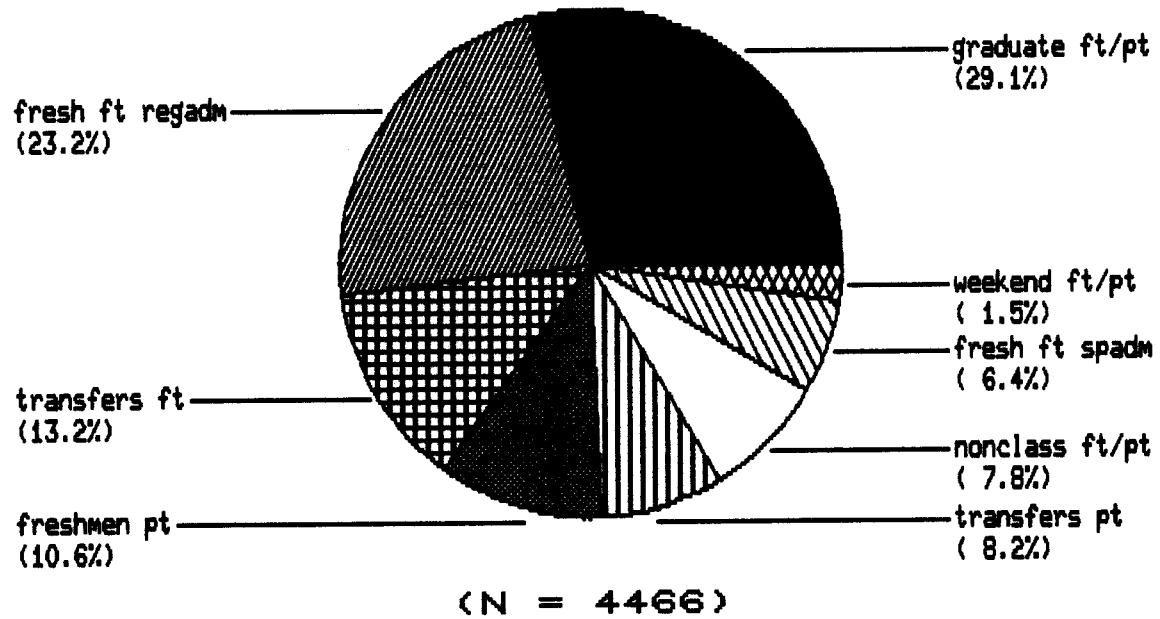
\*Includes 74 summer entrants who continued in fall.

Note: FT/PT based on Admit Status.

Source: Mini SDB874, Mini SDB882  
OIR, 08/88

Graph III-1B

New Student Intake, Ac. Yr. '87-'88  
(Excluding Re-admits)



Source: Mini SDB874, Mini SDB882  
OIR, 08/88

Table III-2

New Student Intake  
AY81-82 and AY87-88

	<u>AY81-82</u>	<u>AY87-88</u>	<u>Change AY81-82 to AY87-88</u>	
			<u>#</u>	<u>%</u>
Graduate Students FT & PT	1850	1298	-552	-29.8%
Undergraduates Full-time	2325	2005	-320	-13.8%
Undergraduates Part-time	1573	1163	-410	-26.1%
Total	5748	4466	-1282	-22.3%

Source: SDBex, SDB874, SDB882  
OIR, 07/88



Table III-3

Actual and Projected Decreases in New Jersey  
Public High School Graduates\*

<u>Year</u>	<u>Number of Graduates</u>	<u>Year-to-Year Decrease</u>	<u>Cumulative Decrease (Base Year = 1983)</u>	<u>Cumulative Decrease (Base Year = 1987)</u>
1983	90,048	-	-	
1984	85,569	-5.0%	-5.0%	
1985	81,547	-4.7	-9.4	
1986	78,781	-3.4	-12.5	
1987	79,376	+0.8	-11.9	-
1988	79,959	+0.7	-11.2	+0.7%
1989	75,211	-5.9	-16.5	-5.2
1990	68,557	-8.8	-23.9	-13.6
1991	64,445	-6.0	-28.4	-18.8
1992	63,421	-1.6	-29.6	-20.1
1993	62,556	-1.4	-30.5	-21.2
1994	61,674	-1.4	-31.5	-22.3
1995	64,051	+3.9	-28.9	-19.3
1996	64,309	+0.4	-28.6	-19.0
1997	66,411	+3.3	-26.2	-16.3
1998	67,379	+1.5	-25.2	-15.1

\*Figures for 1983 through 1987 are actual; others are projected.

Source: Department of Education, February 1988  
OIR, 08/88

Table III-4

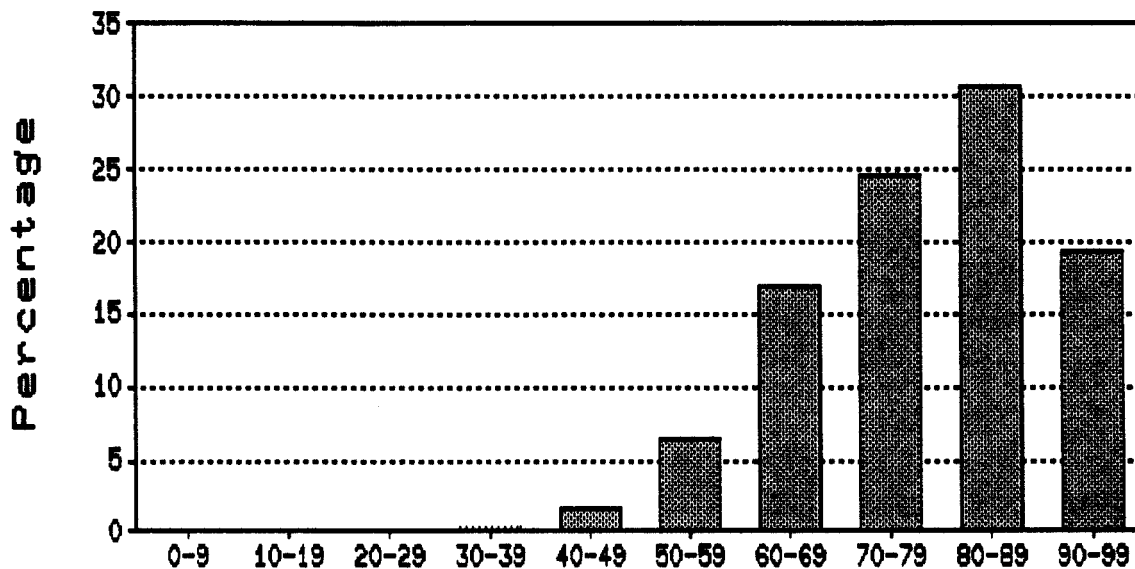
Yield Percentages  
Applicants/Admits, Admits/Registrants  
and Applicants/Registrants  
Fall 1987 Intake\*

	<u>Complete</u> <u>Appls.</u>	<u>#</u>	<u>Admits</u> <u>% of</u> <u>Appls.</u>	<u>#</u>	<u>Registrants</u> <u>% of</u> <u>Admits</u>	<u>% of</u> <u>Appls.</u>
Freshmen FT	5710	3281	57.5%	1321	40.3%	23.1%
Freshmen PT	856	679	79.3%	378	55.7%	44.2%
Transfers FT	1361	756	55.5%	460	60.8%	33.8%
Transfers PT	611	397	65.0%	237	59.7%	38.8%

\*Includes Weekend College, excludes re-admits and non-classified students;  
FT/PT status based on admit status.

Sources: ADMEXTR file, SDB874  
OIR, 09/88

**DISTRIBUTION OF CLASS RANK, FALL 1987**  
 First-time Full-time Freshmen, Reg. Adm.



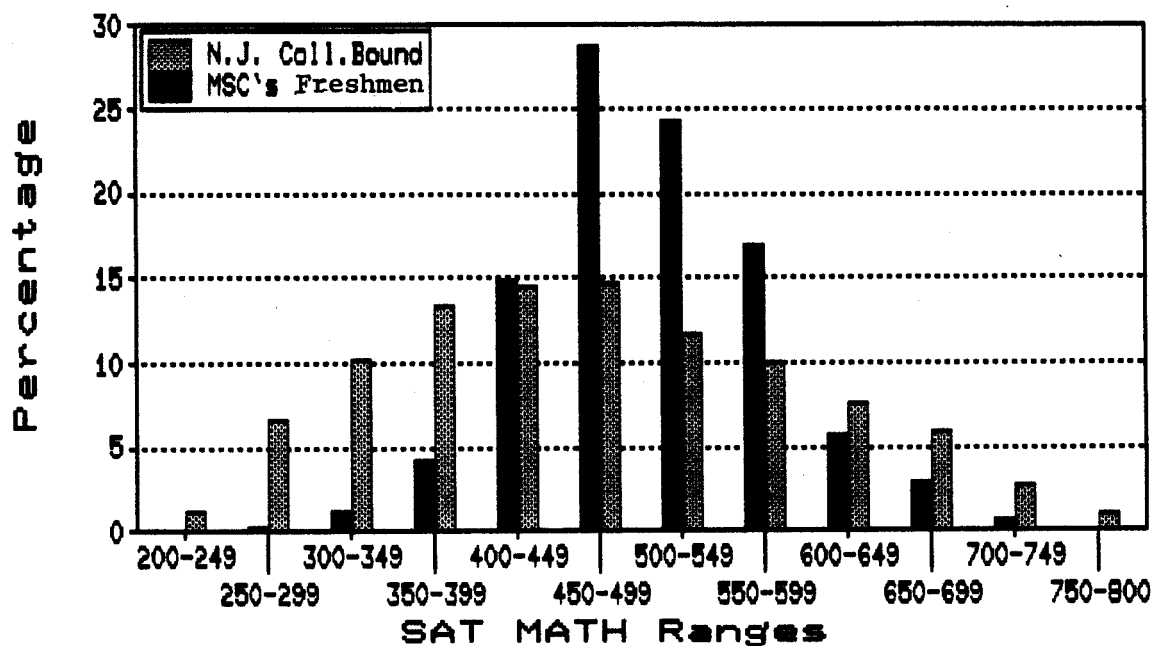
**Percentile Ranges**

(N = 939) Mean Percentile 78

<u>Range</u>	<u>Number</u>	<u>Percent</u>
90-99	181	19.3%
80-89	289	30.8%
70-79	232	24.7%
60-69	159	16.9%
50-59	60	6.4%
40-49	15	1.6%
30-39	2	0.2%
20-29	1	0.1%
10-19	0	-
0-9	0	-
	<u>939</u>	<u>100.0%</u>

Source: SURE, Fall 1987  
 OIR, 08/88

**DISTRIBUTION OF SAT MATH SCORES, 1987**  
**MSC's Freshmen and N.J. College Bound**



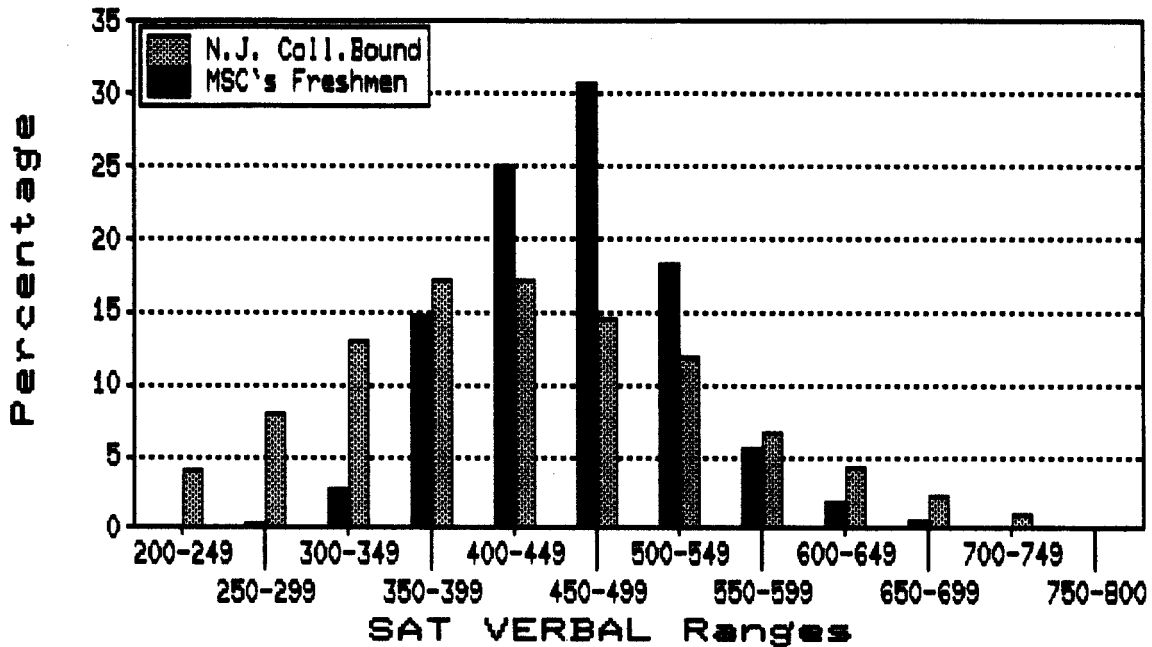
Mean MSC = 502

Mean NJ College-Bound = 467

<u>MSC</u>			<u>NJ College-Bound</u>		
<u>Range</u>	<u>Number</u>	<u>Percent</u>	<u>Range</u>	<u>Number</u>	<u>Percent</u>
200-249	0	-	200-249	873	1.3%
250-299	1	0.1%	250-299	4333	6.7%
300-349	11	1.2%	300-349	6610	10.2%
350-399	41	4.3%	350-399	8735	13.4%
400-449	142	14.9%	400-449	9498	14.6%
450-499	273	28.7%	450-499	9559	14.7%
500-549	231	24.3%	500-549	7628	11.7%
550-599	161	16.9%	550-599	6549	10.1%
600-649	55	5.8%	600-649	4974	7.6%
650-699	28	2.9%	650-699	3856	5.9%
700-749	7	0.7%	700-749	1764	2.7%
750-800	0	-	750-800	669	1.0%
	<u>950</u>	<u>100.0%</u>		<u>65,048</u>	<u>100.0%</u>

Source: SURE, Fall 1987  
 OIR, 08/88

**DISTRIBUTION OF SAT VERB SCORES, 1987**  
 MSC's Freshmen and N.J. College Bound



Mean MSC = 457

Mean NJ College-Bound - 425

<u>MSC</u>			<u>NJ College-Bound</u>		
<u>Range</u>	<u>Number</u>	<u>Percent</u>	<u>Range</u>	<u>Number</u>	<u>Percent</u>
200-249	0	-	200-249	2660	4.1%
250-299	2	0.2%	250-299	5201	8.0%
300-349	27	2.8%	300-349	8490	13.1%
350-399	141	14.8%	350-399	11114	17.1%
400-449	238	25.0%	400-449	11118	17.1%
450-499	292	30.7%	450-499	9433	14.5%
500-549	174	18.3%	500-549	7815	12.0%
550-599	52	5.5%	550-599	4369	6.7%
600-649	17	1.8%	600-649	2736	4.2%
650-699	6	0.6%	650-699	1442	2.2%
700-749	1	0.1%	700-749	598	0.9%
750-800	0	-	750-800	72	0.1%
	<u>950</u>	<u>100.0%</u>		<u>65,048</u>	<u>100.0%</u>

Source: SURE, Fall 1987  
 OIR, 08/88

Table III-8

SAT Scores and High School Percentiles  
of Fall 1987 Freshmen, Special Admits

<u>Range</u>	<u>Verbal</u>		<u>Math</u>	
	#	%	#	%
750 - 800	-	-	-	-
700 - 749	-	-	-	-
650 - 699	-	-	-	-
600 - 649	-	-	-	-
550 - 599	-	-	-	-
500 - 549	3	1.1%	9	3.2%
450 - 499	8	2.8%	24	8.5%
400 - 449	16	5.6%	24	8.5%
350 - 399	52	18.3%	69	24.3%
300 - 349	78	27.5%	69	24.3%
250 - 299	80	28.2%	74	26.1%
200 - 249	47	16.5%	15	5.3%
Unknown	2		2	
Mean	315	-	346	-
N of Mean	284	-	284	-

High School Percentiles

<u>Rank</u>	#	%
90 - 100	17	6.3%
80 - 89	41	15.3%
70 - 79	26	9.7%
60 - 69	40	14.9%
50 - 59	39	14.6%
40 - 49	32	11.9%
30 - 39	23	8.6%
20 - 29	21	7.8%
10 - 19	22	8.2%
0 - 9	7	2.6%
Unknown	18	
Mean	58.0	-
N of Mean	268	-

Source: SURE, Fall 1987  
OIR, 08/88

Table III-9

**Mean SAT's, High School Percentiles and Academic Index  
Regular Freshmen, Fall 1982 - Fall 1987**

	<u>Fall '82</u>	<u>Fall '83</u>	<u>Fall '84</u>	<u>Fall '85</u>	<u>Fall '86</u>	<u>Fall '87</u>
Mean SAT Verbal	442	454	446	450	457	457
Mean SAT Math	477	497	489	491	499	502
Mean High School Percentile	77	77	77	75	76	78
Mean Academic Index	206	208	208	206	209	210
Size of Freshman Class (Regular Admits)	1428	1345	1075	1056	875	991

Source: HEGIS Reports, Fall 1982-85; SURE 1986-87  
OIR, 08/88

Table III-10

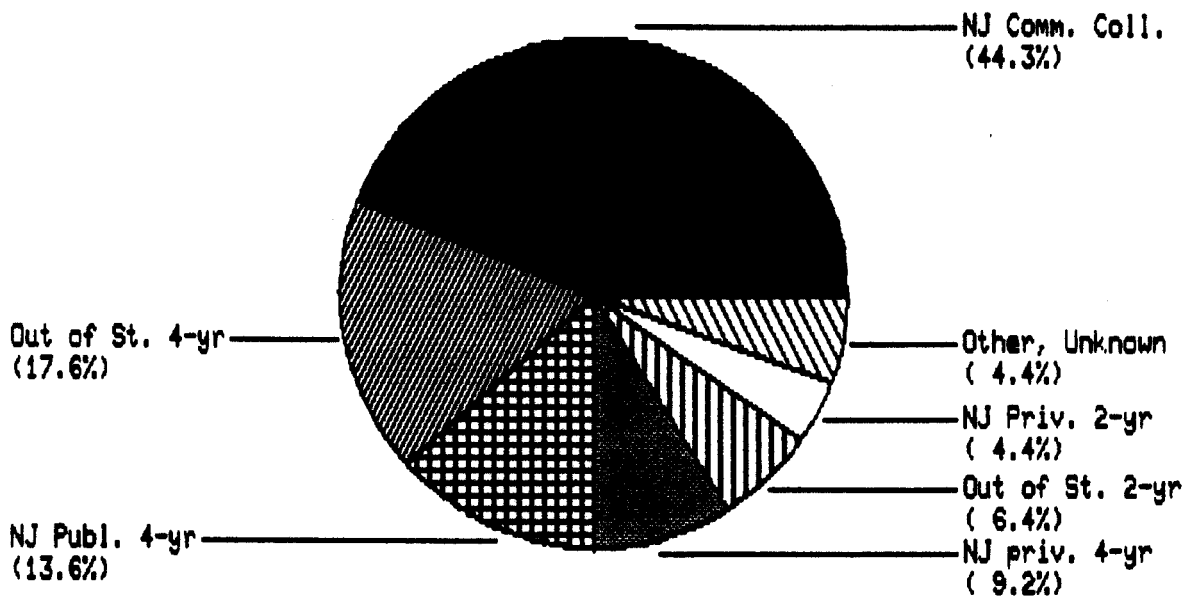
Ethnic Distribution  
of  
Fall 1987 Undergraduate Intake  
by  
Student Type

	<u>White</u> <u>non-Hisp.</u>		<u>Hispanic</u>		<u>Asn/</u> <u>Pac. Is.</u>		<u>Amer. Ind/</u> <u>Al.Nat.</u>		<u>Black</u> <u>non-Hisp.</u>		<u>Unknown</u>		<u>Totals</u>	
	<u>#</u>	<u>%</u>	<u>#</u>	<u>%</u>	<u>#</u>	<u>%</u>	<u>#</u>	<u>%</u>	<u>#</u>	<u>%</u>	<u>#</u>	<u>%</u>	<u>#</u>	<u>%</u>
FT Freshmen Reg. Admits	901	90.9	32	3.2	23	2.3	4	0.4	28	2.8	3	0.3	991	100.0%
FT Freshmen Spec. Adm.*	60	18.2	108	32.7	11	3.3	1	0.3	139	42.1	11	3.3	330	100.0%
FT Transfers	405	88.0	14	3.0	14	3.0	2	0.6	14	3.0	11	2.4	460	100.0%
PT Freshmen	259	69.6	15	4.0	12	3.2	8	2.2	20	5.4	58	15.6	372	100.0%
PT Transfers	187	78.9	7	3.0	4	1.7	1	0.4	9	3.8	29	12.2	237	100.0%

\*Includes Weekend College



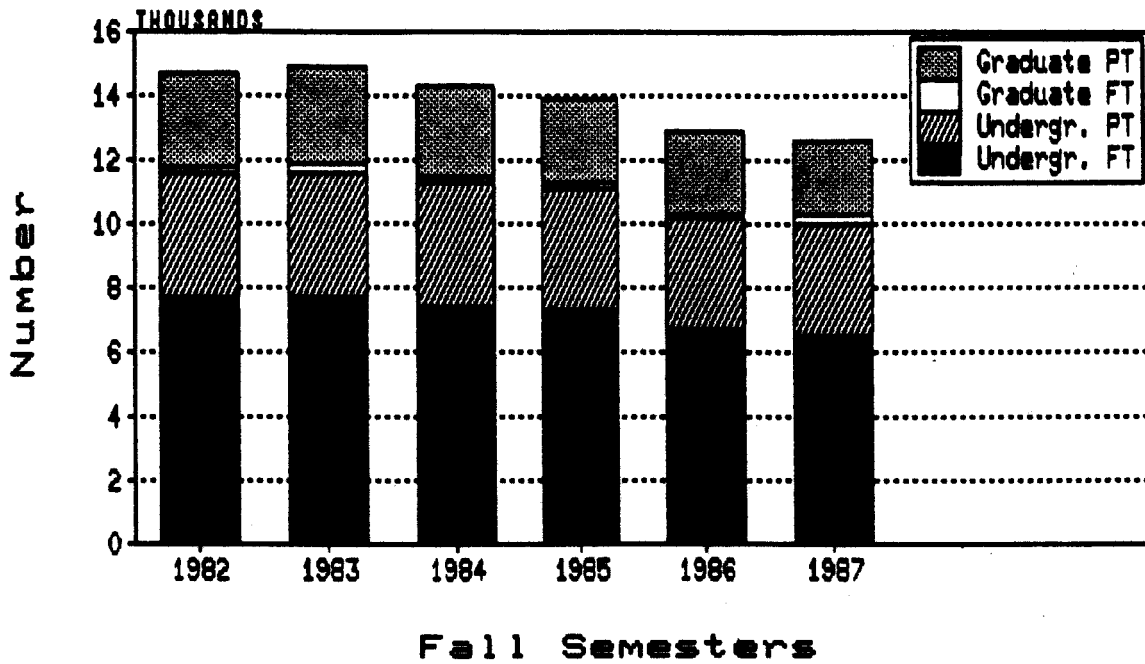
**PRIOR INSTITUTIONS OF FALL '87 TRANSFERS**  
 Full-time and Part-time combined



<u>Prior Institution</u>	<u>Number</u>	<u>Percent</u>
New Jersey Community College	309	44.3%
New Jersey Public 4-Year	95	13.6
New Jersey Private 4-Year	64	9.2
New Jersey Private 2-Year	31	4.4
Out-of-State 4-Year	123	17.6
Out-of-State 2-Year	44	6.4
Other, Unknown	31	4.4
<b>Total</b>	<u>697</u>	<u>100.0%</u>

Source: SDBex874  
 OIR, 08/88

**HEADCOUNT ENROLLMENT BY STUDENT TYPE**  
Fall 1982 through Fall 1987



	<u>F1982</u>	<u>F1983</u>	<u>F1984</u>	<u>F1985</u>	<u>F1986</u>	<u>F1987</u>
Graduate PT						
Number	2887	2998	2789	2614	2596	2329
Percent	19.6%	20.1%	19.4%	18.8%	20.1%	18.4%
Graduate FT						
Number	173	308	254	137	104	302*
Percent	1.2%	2.1%	1.8%	1.0%	0.8%	2.4%
Undergr. PT						
Number	3921	3931	3885	3845	3516	3540
Percent	26.6%	26.3%	27.0%	27.6%	27.2%	27.9%
Undergr. FT						
Number	7773	7712	7446	7320	6717	6511
Percent	52.7%	51.6%	51.8%	52.6%	51.9%	51.3%
Total Hdct.						
Number	14,754	14,949	14,374	13,916	12,933	12,682
Percent	100.0%	100.0%	100.0%	100.0%	100.0%	100.0%

\*Increase due to change in definition of full-time (12 to 9).

Source: Registrar's Fall Enrollment Reports  
OIR, 07/88

Table IV-2

**Enrollments in Special Programs,  
Headcount, Fall 1982 to Fall 1987**

<u>Program</u>	<u>F82</u>	<u>F83</u>	<u>F84</u>	<u>F85</u>	<u>F86</u>	<u>F87</u>	<u>Change</u> <u>'82 to '87</u>
EOF (Ed. Opport. Fund)	406	489	529	580	578	579	+42.6%
Weekend College	431	394	370	403	317	239	-44.5%
STP (Spec. Tutor. Prog.)	160	232	251	271	254	252	+57.5%
Special Talents	71	135	157	190	190	185	+160.6%
Sec. Careers	688	691	660	528	509	524	-23.8%

Source: Registrar's Fall Enrollment Reports 1982-1987

OIR, 07/88

OIR

Table IV-3A

**Ethnic Breakdown of Undergraduate Enrollment  
Fall 1982 and Fall 1987**

<u>Ethnicity</u>	<u>Fall 1982</u>		<u>Fall 1987</u>	
	<u>#</u>	<u>%</u>	<u>#</u>	<u>%</u>
White, non-His.	9,791	83.7	7,995	79.8%
Hispanic	810	6.9	847	8.5%
As/Pac Isl.	73	0.6	144	1.4%
Am Ind/Al Na	229	2.0	78	0.8%
Black, non-His.	649	5.5	789	7.9%
Non-Res Alien	142	1.2	166	1.7%
<b>TOTAL</b>	<u>11,694</u>	<u>100.0%</u>	<u>10,019</u>	<u>100.0%</u>

Source: HEGIS Fall Enrollment Report, 1982  
SURE Tape, Fall 1987

OIR, 07/88

Table IV-3B

**Ethnic Breakdown of Graduate Enrollment  
Fall 1982 and Fall 1987**

<u>Ethnicity</u>	<u>Fall 1982</u>		<u>Fall 1987</u>	
	#	%	#	%
White, non-His.	2676	87.5%	2332	87.9%
Hispanic	84	2.7	110	4.1%
As/Pac Isl.	37	1.2	35	1.3%
Am Ind/Al Na	36	1.2	25	0.9%
Black, non-His.	169	5.5	114	4.3%
Non-Res Alien	58	1.9	38	1.4%
<b>TOTAL</b>	<u>3060</u>	<u>100.0%</u>	<u>2654</u>	<u>100.0%</u>

Source: HEGIS Fall Enrollment Report, 1982  
SURE Tape, Fall 1987

OIR, 07/88

Table IV-4

**Enrollment by Gender  
Fall 1987**

		<u>Male</u>		<u>Female</u>		<u>Total</u>	
		<u>#</u>	<u>%</u>	<u>#</u>	<u>%</u>	<u>#</u>	<u>%</u>
Graduate	Full-time	96	31.7	207	68.3	303	100.0%
	Part-time	732	31.1	1619	68.9	2351	100.0%
	Total	<u>828</u>	<u>31.2</u>	<u>1826</u>	<u>68.8</u>	<u>2654</u>	<u>100.0%</u>
Undergraduate	Full-time	2514	38.8	3970	61.2	6484	100.0%
	Part-time	1154	32.6	2381	67.4	3535	100.0%
	Total	<u>3668</u>	<u>36.6</u>	<u>6351</u>	<u>63.4</u>	<u>10,019</u>	<u>100.0%</u>
GRAND TOTAL		<u>4496</u>	<u>35.5</u>	<u>8177</u>	<u>64.5</u>	<u>12,673</u>	<u>100.0%</u>

Source: SURE Tape Fall 1987

OIR, 07/88

Table IV-5

Geographic Distribution  
Undergraduate Students  
Fall 1987

	<u>Full-time</u>		<u>Part-time</u>		<u>Total (FT &amp; PT)</u>	
	<u>#</u>	<u>%</u>	<u>#</u>	<u>%</u>	<u>#</u>	<u>%</u>
Atlantic	19	0.3	3	0.1	22	0.2%
Bergen	1232	19.0	687	19.4	1919	19.1%
Burlington	70	1.1	6	0.2	76	0.8%
Camden	43	0.7	8	0.2	51	0.5%
Cape May	18	0.3	2	0.1	20	0.2%
Cumberland	18	0.3	1	0.0	19	0.2%
Essex	1487	22.9	1241	35.1	2728	27.2%
Gloucester	17	0.3	0	-	17	0.2%
Hudson	468	7.2	201	5.7	669	6.7%
Hunterdon	23	0.4	6	0.2	29	0.3%
Mercer	54	0.8	3	0.1	57	0.6%
Middlesex	360	5.6	49	1.4	409	4.1%
Monmouth	369	5.7	39	1.1	408	4.1%
Morris	530	8.2	288	8.1	818	8.2%
Ocean	168	2.6	13	0.4	181	1.8%
Passaic	932	14.4	765	21.6	1697	16.9%
Salem	3	0.0	1	0.0	4	0.0%
Somerset	88	1.4	26	0.7	114	1.1%
Sussex	135	2.1	56	1.6	191	1.9%
Union	336	5.2	112	3.2	448	4.5%
Warren	39	0.6	13	0.4	52	0.5%
Out-of-State	75	1.2	15	0.4	90	0.9%
Total	<u>6484</u>	<u>100.0%</u>	<u>3535</u>	<u>100.0%</u>	<u>10,019</u>	<u>100.0%</u>

Source: SDB-874

OIR, 07/88

Table IV-6

Geographic Distribution  
Graduate Students  
Fall 1987

<u>County</u>	<u>Full-time</u>		<u>Part-time</u>		<u>Total (FT &amp; PT)</u>	
	<u>#</u>	<u>%</u>	<u>#</u>	<u>%</u>	<u>#</u>	<u>%</u>
Atlantic	1	0.3	0	-	1	0.0%
Bergen	50	16.5	549	23.3	599	22.6%
Burlington	1	0.3	0	-	1	0.0%
Camden	0	-	0	-	0	-
Cape May	0	-	1	0.0	1	0.0%
Cumberland	0	-	0	-	0	-
Essex	90	29.7	703	30.1	793	29.9%
Gloucester	0	-	2	0.1	2	0.1%
Hudson	13	4.3	94	4.0	107	4.0%
Hunterdon	1	0.3	3	0.1	4	0.2%
Mercer	1	0.3	4	0.2	5	0.2%
Middlesex	6	2.0	53	2.2	59	2.2%
Monmouth	4	1.3	25	1.1	29	1.1%
Morris	38	12.5	283	12.0	321	12.1%
Ocean	4	1.3	12	0.5	16	0.6%
Passaic	45	14.9	379	16.1	424	16.0%
Salem	0	-	0	-	0	-
Somerset	7	2.3	22	0.9	29	1.1%
Sussex	7	2.3	64	2.7	71	2.7%
Union	15	5.0	91	3.9	106	4.0%
Warren	2	0.7	12	0.5	14	0.5%
Out-of-State	18	5.9	54	2.3	72	2.7%
Total	<u>303</u>	<u>100.0%</u>	<u>2351</u>	<u>100.0%</u>	<u>2654</u>	<u>100.0%</u>

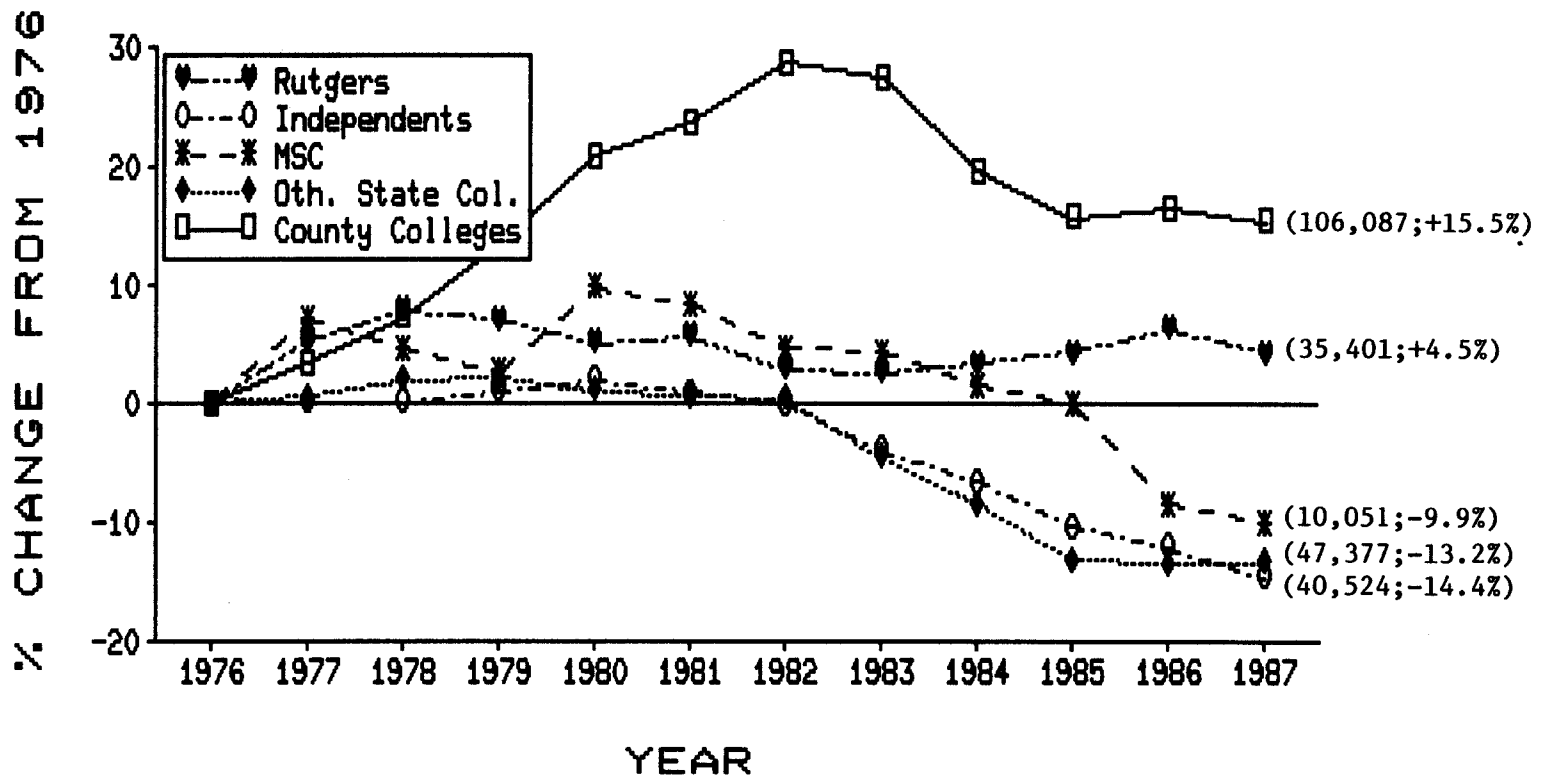
Source: SDB-874

OIR, 07/88



Graph IV-7

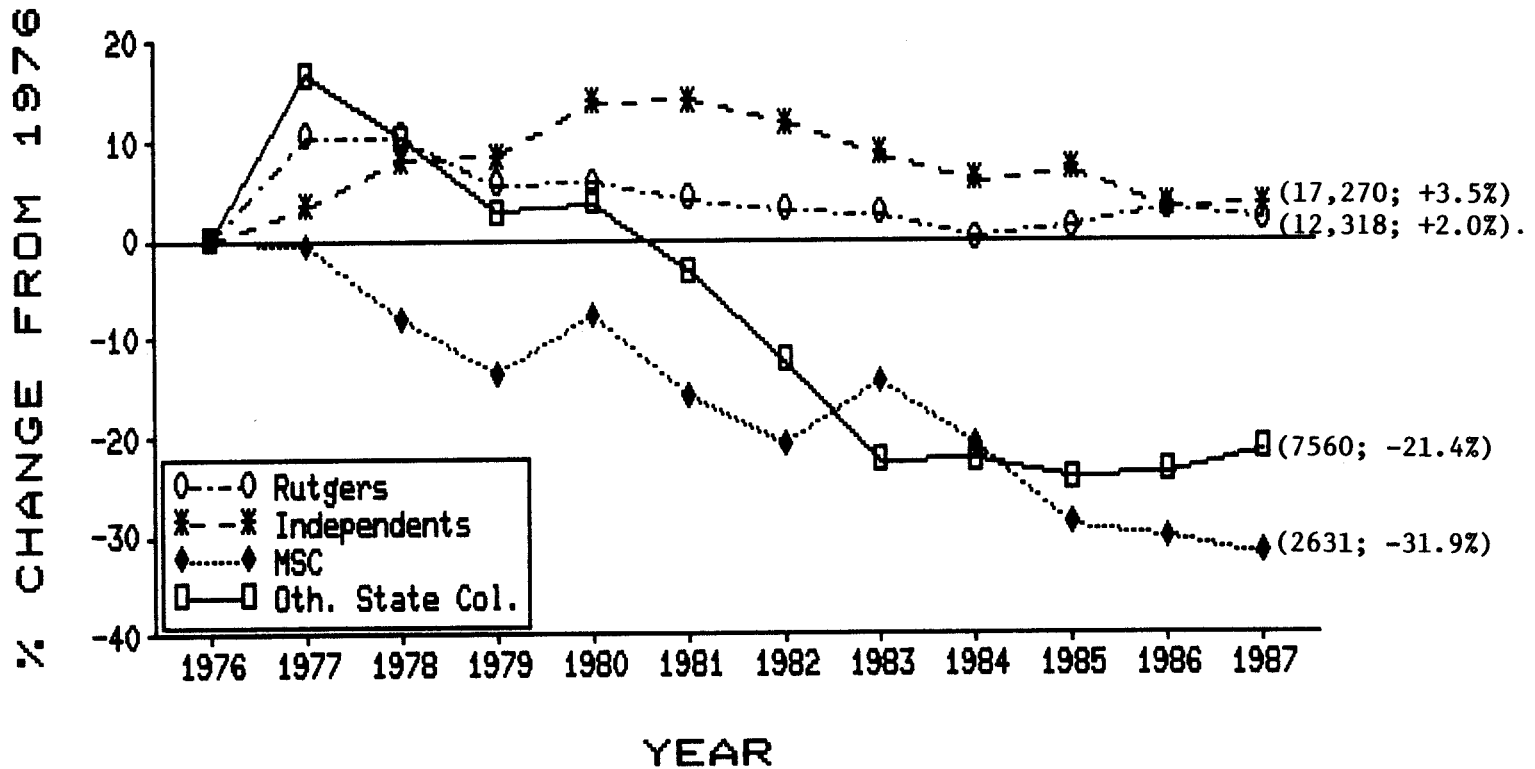
**% CHANGE IN UG HEADCOUNT ENROLLMENTS, NJ**  
by Higher Educ. Sector; Base Yr. 1976



Source: Department of Higher Education  
OIR, 07/88

Graph IV-8

**% CHANGE IN GRAD. HEADCOUNT ENROLLM. NJ**  
by Higher Educ. Sector; Base Yr. 1976



Source: Department of Higher Education  
OIR, 07/88

Table IV-9

FTE Enrollments FY82 - FY88 and  
Enrollment Targets for FY89 and Beyond

<u>Year*</u>	<u>Total FTE's</u>	<u>Year-to-Year % Decrease</u>	<u>Cumulative % Decrease (Base = FY82)</u>	<u>Cumulative % Decrease (Base = FY88)</u>
FY82	10115	-	-	-
FY83	9736	-3.7%	-3.7%	-
FY84	9766	+0.3	-3.5	-
FY85	9380	-4.0	-7.3	-
FY86	8953	-4.6	-11.5	-
FY87	8295	-7.3	-18.0	-
FY88	8126	-2.0	-19.7	-
FY89	7729	-4.9	-23.6	-4.9%
FY90	7385	-4.5	-27.0	-9.1
FY91	7367	-0.2	-27.2	-9.3
FY92	7350	-0.2	-27.3	-9.5
FY93	7208	-1.9	-28.7	-11.3
FY94	7052	-2.2	-30.3	-13.2
FY95	6970	-1.2	-31.1	-14.2

\*FY82 - FY88 actual

Source: FTE's for FY82 - FY88, Registrar's Enrollment Reports; FTE for  
FY89-FY95 MSC's work group for OMB Five-Year Plan, June 1988.

OIR, 07/88

Table V-1

Retention and Attrition of Students Who Entered as  
Freshmen FT Regular Admits  
Status in 3rd, 5th, 9th and 13th Semester

	<u>Status in</u> <u>3rd Semester</u>	<u>Status in</u> <u>5th Semester</u>	<u>Status in</u> <u>9th Semester</u>	<u>Status in</u> <u>13th Semester</u>
Not enrolled, not graduated	20.4%	31.4%	37.3%	40.2%
Enrolled	79.6%	68.6%	26.3%	3.0%
Graduated	0.0%	0.0%	36.4%	56.8%

Status in 3rd semester based on record of Fall '80 through Fall '86 intakes.

Status in 5th semester based on record of Fall '80 through Fall '85 intakes.

Status in 9th semester based on record of Fall '80 through Fall '83 intakes

Status in 13th semester based on record of Fall '80 through Fall '81 intakes.

Source: SDBEX 874  
OIR, 08/88

Table V-1A

Retention and Attrition of Students Who Entered as  
Freshmen FT Special Admits  
(Special Admits = EOF, STP and Special Talents)  
Status in 3rd, 5th, 9th and 13th Semester

	<u>Status in</u> <u>3rd Semester</u>	<u>Status in</u> <u>5th Semester</u>	<u>Status in</u> <u>9th Semester</u>	<u>Status in</u> <u>13th Semester</u>
Not enrolled, not graduated	30.9%	44.2%	51.0%	66.6%
Enrolled	68.2%	55.2%	43.1%	1.3%
Graduated	0.0%	0.0%	5.1%	31.5%

Status in 3rd semester based on record of Fall '80 through Fall '86 intakes.

Status in 5th semester based on record of Fall '80 through Fall '85 intakes.

Status in 9th semester based on record of Fall '80 through Fall '83 intakes.

Status in 13th semester based on record of Fall '80 through Fall '81 intakes.

Source: SDBEX 874  
OIR, 08/88

Table V-2

Retention and Attrition of Students Who Entered as  
Freshmen Part-time (including non-matriculants)  
Status in 3rd, 5th, 9th and 13th Semester

	<u>Status in</u> <u>3rd Semester</u>	<u>Status in</u> <u>5th Semester</u>	<u>Status in</u> <u>9th Semester</u>	<u>Status in</u> <u>13th Semester</u>
Not enrolled, not graduated	45.7%	61.7%	72.9%	77.3%
Enrolled	54.3%	38.3%	24.7%	13.1%
Graduated	0.0%	0.0%	2.4%	9.6%

Status in 3rd semester based on record of Fall '80 through Fall '86 intakes.

Status in 5th semester based on record of Fall '80 through Fall '85 intakes.

Status in 9th semester based on record of Fall '80 through Fall '83 intakes.

Status in 13th semester based on record of Fall '80 through Fall '81 intakes.

Source: SDBEX 874  
OIR, 08/88

Table V-3

Retention and Attrition of Students Who Entered as  
Transfers Full-time  
Status in 3rd, 5th, 9th and 13th Semester

	<u>Status in</u> <u>3rd Semester</u>	<u>Status in</u> <u>5th Semester</u>	<u>Status in</u> <u>9th Semester</u>	<u>Status in</u> <u>13th Semester</u>
Not enrolled, not graduated	20.3%	25.8%	28.6%	30.8%
Enrolled	78.9%	51.8%	5.8%	0.9%
Graduated	0.8%	22.4%	65.6%	68.3%

Status in 3rd semester based on record of Fall '80 through Fall '86 intakes.

Status in 5th semester based on record of Fall '80 through Fall '85 intakes.

Status in 9th semester based on record of Fall '80 through Fall '83 intakes.

Status in 13th semester based on record of Fall '80 through Fall '81 intakes.

Source: SDBEX 874  
OIR, 08/88

Table V-4

Retention and Attrition of Students Who Entered as  
Transfers Part-time  
Status in 3rd, 5th, 9th and 13th Semester

	<u>Status in</u> <u>3rd Semester</u>	<u>Status in</u> <u>5th Semester</u>	<u>Status in</u> <u>9th Semester</u>	<u>Status in</u> <u>13th Semester</u>
Not enrolled, not graduated	40.6%	52.1%	61.5%	64.1%
Enrolled	59.2%	44.8%	19.8%	10.7%
Graduated	0.2%	3.1%	18.7%	25.2%

Status in 3rd semester based on record of Fall '80 through Fall '86 intakes.

Status in 5th semester based on record of Fall '80 through Fall '85 intakes.

Status in 9th semester based on record of Fall '80 through Fall '83 intakes.

Status in 13th semester based on record of Fall '80 through Fall '81 intakes.



Table V-5Attrition/Retention Trends of Students Who Entered as  
Freshmen FT - Regular Admits

<u>First Semester</u>	<u>Proportion Enrolled in 3rd Semester</u>	<u>Proportion Enrolled in 5th Semester</u>	<u>Proportion Graduated Before 9th Semester</u>	<u>Proportion Graduated Before 13th Semester</u>
Fall '78	-	-	40.5%	59.2%
Fall '79	-	-	39.7%	57.9%
Fall '80	-	66.1%	38.2%	56.2%
Fall '81	79.8%	69.2%	35.4%	57.4%
Fall '82	80.5%	69.5%	35.4%	-
Fall '83	81.6%	70.2%	35.4%	-
Fall '84	79.8%	70.5%	-	-
Fall '85	78.8%	66.9%	-	-
Fall '86	78.9%	-	-	-

Source: SDBEX 874  
OIR, 08/88

Table V-6

Attrition/Retention Trends of Students Who Entered as  
Freshmen Part-time

<u>First Semester</u>	<u>Proportion Enrolled in 3rd Semester</u>	<u>Proportion Enrolled in 7th Semester</u>	<u>Proportion Graduated Before 9th Semester</u>	<u>Proportion Graduated Before 13th Semester</u>
Fall '78	-	-	2.9%	10.9%
Fall '79	-	28.9%	1.8%	10.5%
Fall '80	-	25.4%	2.9%	8.1%
Fall '81	55.6%	33.8%	2.1%	11.1%
Fall '82	58.3%	34.3%	3.0%	-
Fall '83	52.4%	28.5%	1.7%	-
Fall '84	55.0%	29.6%	-	-
Fall '85	53.0%	-	-	-
Fall '86	58.6%	-	-	-

Source: SDBEX 874  
OIR, 08/88

Table V-7

Attrition/Retention Trends of Students Who Entered as  
Transfers Full-time

<u>First Semester</u>	<u>Proportion Enrolled in 3rd Semester</u>	<u>Proportion Enrolled in 5th Semester</u>	<u>Proportion Graduated Before 7th Semester</u>	<u>Proportion Graduated Before 11th Semester</u>
Fall '78	-	-	-	68.6%
Fall '79	-	-	52.9%	65.9%
Fall '80	-	47.4%	49.4%	65.0%
Fall '81	78.8%	48.6%	54.2%	69.9%
Fall '82	77.7%	53.3%	54.6%	69.4%
Fall '83	81.8%	53.1%	56.6%	-
Fall '84	78.9%	53.8%	43.2%	-
Fall '85	79.5%	57.3%	-	-
Fall '86	81.6%	-	-	-

Source: SDBEX 874  
OIR, 08/88

Table V-8

Attrition/Retention Trends of Students Who Entered as  
Transfers Part-time

<u>First Semester</u>	<u>Proportion Enrolled in 3rd Semester</u>	<u>Proportion Enrolled in 5th Semester</u>	<u>Proportion Graduated Before 7th Semester</u>	<u>Proportion Graduated Before 11th Semester</u>
Fall '78	-	-	-	22.3%
Fall '79	-	-	9.8%	24.6%
Fall '80	-	41.2%	8.9%	20.5%
Fall '81	54.0%	43.3%	8.0%	21.8%
Fall '82	62.4%	46.0%	8.9%	25.9%
Fall '83	58.9%	46.7%	12.2%	-
Fall '84	64.3%	48.1%	13.2%	-
Fall '85	58.3%	45.0%	-	-
Fall '86	58.4%	-	-	-

Source: SDBEX 874  
OIR, 08/88

Table VI-1

Total Undergraduate Enrollment by Major  
All Schools and Undeclared Students  
1980/1987

<u>SCHOOL</u>	<u>Fall 1980</u>		<u>Fall 1985</u>		<u>Fall 1987</u>		<u>Change 1980 to 1987</u>	
	#	%	#	%	#	%	#	%
Business Administration	3421	27.9	2455	22.0	2094	20.7	-1327	-38.8%
Fine & Performing Arts	769	6.3	792	7.1	831	8.2	+62	+8.1%
Mathematical & Natural Sciences	1188	9.7	941	8.4	791	7.8	-397	-33.4%
Humanities & Social Sciences	2616	21.3	2370	21.2	2421	23.9	-195	-7.5%
Professional Studies	1786	14.6	1391	12.5	1347	13.3	-439	-24.6%
TOTAL - All Schools	<u>9780</u>	<u>79.8</u>	<u>7949</u>	<u>71.2</u>	<u>7484</u>	<u>73.8</u>	<u>-2296</u>	<u>-23.5%</u>
Undeclared Students	2482	20.2	3216	28.8	2651	26.2	+169	+6.8%
GRAND TOTAL	<u>12,262</u>	<u>100.0%</u>	<u>11,165</u>	<u>100.0%</u>	<u>10,135</u>	<u>100.0%</u>	<u>-2127</u>	<u>-17.3%</u>

Source: Registrar's Fall Enrollment Reports 1980, 1985, 1987  
OIR, 08/88

Table VI-2

**Degrees and Undergraduate Certificates Awarded  
Academic Years 1973-74 through 1986-87**

<u>Academic Year</u>	<u>Undergraduate Degrees</u>	<u>Undergraduate Certificates</u>	<u>Master's Degrees</u>
1973-74	1657	701	847
1974-75	1810	824	832
1975-76	1834	747	729
1976-77	1917	794	722
1977-78	1882	558	646
1978-79	1843	519	585
1979-80	1824	413	551
1980-81	1836	393	553
1981-82	1913	260	410
1982-83	1928	228	355
1983-84	1872	203	424
1984-85	1761	143	377
1985-86	1750	65	363
1986-87	1750	51	299

Source: Registrar's Reports  
OIR, 08/88

Table VI-3

Undergraduate Degrees Awarded,  
by  
School and Program  
Academic Year 1986-87

<u>Program</u>	<u>#</u>	<u>Degrees</u> <u>%</u>	<u>%</u>
<u>School of Business</u>			
<u>Administration</u>			
Business Administration	489	83.9	
Business Education	8	1.4	
Economics	86	14.8	
Total	<u>583</u>	<u>100.0%</u>	33.3%
<u>School of Fine and</u>			
<u>Performing Arts</u>			
Dance	-	-	-
Fine Arts	75	36.6	
Music	23	11.2	
Music Therapy	7	3.4	
Speech & Theatre	83	40.5	
Theatre	17	8.3	
Total	<u>205</u>	<u>100.0%</u>	11.7%
<u>School of Mathematical</u>			
<u>and Natural Sciences</u>			
Biology	47	26.9	
Chemistry	16	9.1	
Computer Science	72	41.1	
Geoscience	5	2.9	
Mathematics	31	17.7	
Physics	3	1.7	
Toxicology	1	0.6	
Total	<u>175</u>	<u>100.0%</u>	10.0%

(continued)

Table VI-3 (cont'd.)

<u>Program</u>	<u>#</u>	<u>Degrees</u> <u>%</u>	<u>%</u>
<u>School of Humanities</u> <u>and Social Sciences</u>			
Anthropology	6	1.2	
Classics	1	0.2	
Communication Sciences & Disorders	28	5.7	
English	100	20.3	
French	15	3.0	
General Humanities	3	0.6	
Geography	11	2.2	
German	6	1.2	
History	27	5.5	
Italian	4	0.8	
Latin	1	0.2	
Linguistics	4	0.8	
Philosophy	2	0.4	
Political Science	84	17.1	
Psychology	137	27.8	
Religious Studies	4	0.8	
Sociology	41	8.3	
Spanish	18	3.7	
Transcultural Studies	0	-	
Total	<u>492</u>	<u>100.0%</u>	28.1%
<u>School of Professional</u> <u>Studies</u>			
Allied Health	26	8.8	
Health Education	17	5.8	
Home Economics	136	46.1	
Industrial Education & Technology	45	15.3	
Physical Education	40	13.6	
Recreation Professions	<u>31</u>	<u>10.5</u>	
Total	<u>295</u>	<u>100.0%</u>	16.9%
GRAND TOTAL	<u>1750</u>		<u>100.0%</u>

Source: Registrar's Report  
OIR, 08/88



Table VI-4

Graduate Degrees Awarded  
by  
School and Program  
Academic Year 1986-87

<u>Program</u>	<u>#</u>	<u>Degrees</u> <u>%</u>	<u>%</u>
<u>School of Business Administration</u>			
Business Administration (MBA)	12	54.5	
Business Education	10	45.5	
Total	22	100.0%	7.4%
<u>School of Fine and Performing Arts</u>			
Fine Arts	8	44.4	
Music	7	38.9	
Speech & Theatre	3	16.7	
Total	18	100.0%	6.0%
<u>School of Mathematical and Natural Sciences</u>			
Biology	10	23.8	
Chemistry	3	7.1	
Computer Science	23	54.8	
Geoscience	3	7.1	
Mathematics	3	7.1	
Total	42	100.0%	14.0%

(continued)

Table VI-4 (cont'd.)  
 Graduate Degrees Awarded  
 by  
 School and Program  
 Academic Year 1986-87

<u>Program</u>	<u>#</u>	<u>Degrees</u> %	%
<u>School of Humanities and Social Sciences</u>			
Communication Sciences and Disorders	54	55.7	
Educational Psychology	5	5.2	
English & Comparative Literature	5	5.2	
Environmental Studies	14	14.4	
French	3	3.1	
Psychology	2	2.1	
Social Science	13	13.4	
Spanish	1	1.0	
Total	<u>97</u>	<u>100.0%</u>	32.4%
<u>School of Professional Studies</u>			
Administration and Supervision	22	18.3	
Counseling, Human Services & Guidance	50	41.7	
Health Education	6	5.0	
Home Economics	1	0.8	
Industrial Education and Technology	3	2.5	
Physical Education	7	5.8	
Reading	11	9.2	
Teaching (MAT)	20	16.7	
Total	<u>120</u>	<u>100.0%</u>	40.1%
GRAND TOTAL	<u>299</u>		<u>100.0%</u>

Source: Registrar's Report  
 OIR, 08/88

Table VII-1

Growth of Library Collection  
1982 through 1987

	<u>12/31/82</u>	<u>12/31/83</u>	<u>12/31/84</u>	<u>12/31/85</u>	<u>12/31/86</u>	<u>12/31/87</u>
Bound Volumes	327,134	333,280	343,321	353,217	358,851	366,271
Government Documents *	30,909	32,684	31,986	32,302	29,900	28,393
Government Documents (Microforms)	35,878	58,583	69,321	76,782	75,436	80,210
Microforms (Items)	673,209	703,191	744,570	784,262	844,176	871,490
Non-Print Media, Other (Items) **	37,757	38,111	39,009	40,716	41,455	41,951
TOTAL COLLECTION	<u>1,104,887</u>	<u>1,165,849</u>	<u>1,228,207</u>	<u>1,287,279</u>	<u>1,349,818</u>	<u>1,388,315</u>

\*Includes bound periodicals

\*\*Includes films, filmstrips, cassettes, records, slides, videocassettes, etc.

Table VII-2

Circulation Statistics  
Harry A. Sprague Library  
1982 through 1987

	<u>12/31/82</u>	<u>12/31/83</u>	<u>12/31/84</u>	<u>12/31/85</u>	<u>12/31/86</u>	<u>12/31/87</u> *
TOTAL ATTENDANCE	546,574	518,335	510,021	467,701	453,182	437,662
I. CIRCULATION - Main Desk, Reserve Room, In-Library Use of Books						
Books Borrowed:						
Undergraduate	82,959	82,244	71,693	71,196	68,774	69,106
Faculty	11,975	11,839	8,889	9,704	9,473	9,137
Graduate	14,708	13,554	13,022	11,914	11,461	11,234
Graduate Assistants	497	-	-	-	-	-
Non-College	11,870	12,205	9,635	10,084	8,706	7,347
Undefined**	-	595	1,731	2,250	691	1,037
Reciprocal	-	-	-	-	521	658
Reserve	18,751	23,560	22,294	24,121	16,678	15,001
TOTAL CIRCULATION	<u>149,760</u>	<u>143,997</u>	<u>127,264</u>	<u>129,269</u>	<u>116,304</u>	<u>113,520</u>
TABLE BOOK PICK UP	107,824	149,952	129,106	154,292	159,489	150,221

Automated Circulation System commenced operation September 1983.

\*Library closed to public 1/2/87 - 1/19/87.

\*\*Category added to conform to CLSI, and related to Graduate.

(continued)

Table VII-2 (cont'd)

Circulation Statistics  
Harry A. Sprague Library  
1982 through 1987

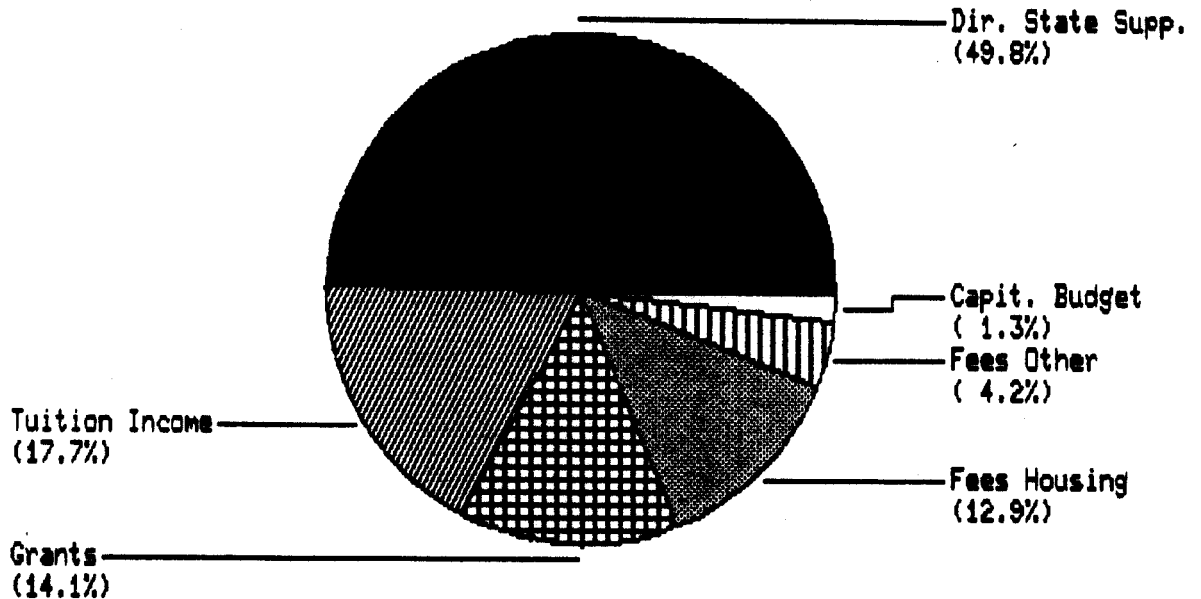
	<u>12/31/82</u>	<u>12/31/83</u>	<u>12/31/84</u>	<u>12/31/85</u>	<u>12/31/86</u>	<u>12/31/87</u>
II. CIRCULATION OF NON-PRINT ITEMS						
Microfilm Reels	12,877	10,492	11,785	11,893	12,656	14,664
Microfiche	12,821	9,560	11,427	10,269	13,345	18,188
Non-Print Media (Other)	7,169	6,754	8,374	8,391	13,710	13,032
TOTAL NON-PRINT MEDIA	<u>32,867</u>	<u>26,806</u>	<u>31,586</u>	<u>30,553</u>	<u>39,711</u>	<u>45,884</u>
III. PERIODICALS	123,361	131,889	131,607	110,919	102,823	111,047
IV. GOVERNMENT DOCUMENTS*						
Out-of-Library Use	41	161	81	65	44	37
In-Library Use	11,256	7,797	6,024	7,422	4,413	4,492
TOTAL GOVERNMENT DOCUMENTS	<u>11,297</u>	<u>7,958</u>	<u>6,105</u>	<u>7,487</u>	<u>4,457</u>	<u>4,529</u>
GRAND TOTAL ALL ITEMS	416,109	460,602	425,668	432,520	422,784	425,201

\*Outside circulation of Government Documents has been restricted; major use is in Library.

Source: Library Annual Report  
OIR, 07/88

**FY88 TOTAL RESOURCES**

(Includes School of Conservation)



**Total Resources: \$ 68.3 Million**

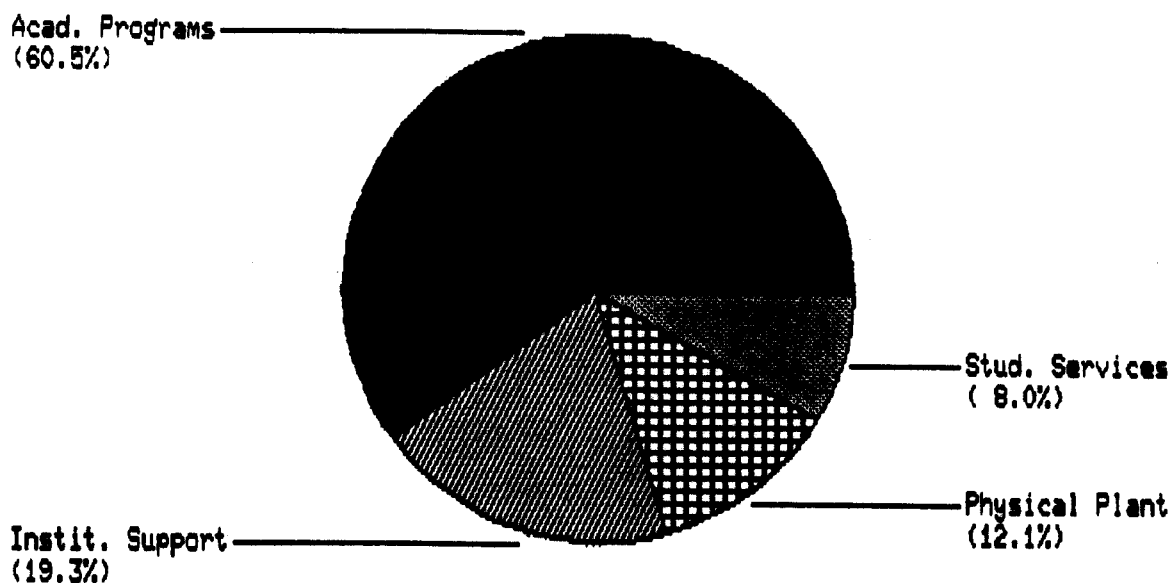
**FY88 TOTAL RESOURCES  
(IN MILLIONS)  
(INCLUDES SCHOOL OF CONSERVATION)**

<b>STATE OPERATING BUDGET</b>		
DIRECT STATE SUPPORT	\$34.0	49.8%
TUITION INCOME (incl. selected fees)	12.1	17.7%
	<u>\$46.1</u>	<u>67.5%</u>
<b>SPECIAL PURPOSE FUNDS</b>		
CAPITAL BUDGET	\$ 0.9	1.3%
GRANTS (EXCL. STUDENT AID)	9.6	14.1%
FEE INCOME HOUSING AND STUDENT UNION	8.8	12.9%
FEE INCOME FOR OTHER SERVICES	2.9	4.2%
	<u>\$22.2</u>	<u>32.5%</u>
<b>GRAND TOTAL</b>	<b>\$68.3</b>	<b>100.0%</b>

Source: Office of Vice President for  
Administration and Finance  
OIR, 09/88

Graph VIII-2**FY88 OPERATING BUDGET**

(Includes School of Conservation)

**Total Operating Budget: \$ 46.1 Million**

**FY88 OPERATING BUDGET  
(IN MILLIONS)  
(INCLUDES SCHOOL OF CONSERVATION)**

ACADEMIC PROGRAMS AND SERVICES	\$27.9	60.5%
STUDENT SERVICES	3.7	8.0%
INSTITUTIONAL SUPPORT	8.9	19.3%
PHYSICAL PLANT	5.6	12.1%
<b>TOTAL BUDGET</b>	<b>\$46.1</b>	<b>100.0%</b>

Source: Office of Vice President for  
Administration and Finance

OIR, 09/88

Table VIII-3

Gross State Appropriations (in thousands)  
for Operating Budget, per FTE;  
(excludes School of Conservation and Challenge Grants)

	<u>Fiscal Year</u>								<u>Change</u>
	<u>FY82</u>	<u>FY83</u>	<u>FY84</u>	<u>FY85</u>	<u>FY86</u>	<u>FY87</u>	<u>FY88</u>	<u>FY89*</u>	<u>FY82-FY89</u>
Gross State Approp.	\$28,929	30,109	31,763	35,451	38,618	41,828	45,300	48,457	+67.5%
FTE Enroll.	9,906	9,706	9,486	9,270	8,906	8,224	7,703	7,796	-21.3%
Gross State Approp. per FTE	\$ 2,920	3,102	3,348	3,824	4,336	5,086	5,881	6,216	+112.9%
Gross State Approp. in FY82 dollars**	\$28,929	28,751	28,884	31,081	32,772	33,781	34,843	35,495	+22.7%
Gross State Approp. per FTE (FY82 dollars)	\$ 2,920	2,962	3,045	3,353	3,680	4,108	4,523	4,553	+55.9%

\*Estimate

\*\*Based on CPI for Northern New Jersey and New York Metropolitan Area.  
FY89 inflation estimated at 5%.

Source: MSC Budget Office  
OIR, 07/88



Table VIII-4

State Appropriations (in thousands) for Operating Budget  
 FY82 through FY89  
 (excludes School of Conservation and Challenge Grants)

	<u>Fiscal Year</u>							<u>FY89</u>	<u>FY82-FY89</u>
	<u>FY82</u>	<u>FY83</u>	<u>FY84</u>	<u>FY85</u>	<u>FY86</u>	<u>FY87</u>	<u>FY88</u>	<u>(est)</u>	<u>Change</u>
Gross State Approp.	\$28,929	30,109	31,763	35,451	38,618	41,828	45,300	48,457	+67.5%
Tuition & Fees	\$ 9,075	10,136	10,771	10,474	10,915	11,313	10,530	11,762	+29.6%
Net State Approp.	\$19,854	19,973	20,992	24,977	27,703	30,515	34,770	36,695	+84.8%
Net State Approp. in FY82 dollars*	\$19,854	19,072	19,089	21,898	23,509	24,645	26,744	26,880	+35.4%

\*Based on CPI for Northern New Jersey and New York Metropolitan Area.  
 FY89 inflation estimated at 5%.

Source: MSC Budget Office  
 OIR, 07/88

Table VIII-5

Net State Appropriation (in thousands) per FTE  
 FY82 through FY89  
 (excludes School of Conservation and Challenge Grants)

	<u>Fiscal Year</u>								<u>Change FY82-FY89</u>
	<u>FY82</u>	<u>FY83</u>	<u>FY84</u>	<u>FY85</u>	<u>FY86</u>	<u>FY87</u>	<u>FY88</u>	<u>(est) FY89</u>	
Net State Approp.	\$19,854	19,973	20,992	24,977	27,703	30,515	34,770	36,695	+84.8%
FTE Enroll.	9,906	9,706	9,486	9,270	8,906	8,224	7,703	7,796	-21.3%
Net State Approp. per FTE	\$ 2,004	2,058	2,213	2,694	3,111	3,710	4,514	4,707	+134.9%
Net State Approp. in FY82 dollars*	\$19,854	19,072	19,089	21,898	23,509	24,645	26,744	26,880	+35.4%
Net State Approp. per FTE (in FY82 dollars)	\$ 2,004	1,965	2,012	2,362	2,640	2,997	3,472	3,448	+72.1%

\*Based on CPI for Northern New Jersey and New York Metropolitan Area.  
 FY89 inflation estimated at 5%.

Source: MSC Budget Office  
 OIR, 07/88

Table VIII-6

Tuition Income as Proportion of Gross Appropriations  
FY82 through FY89  
(excludes School of Conservation and Challenge Grants)

	<u>Fiscal Year</u>							
	<u>FY82</u>	<u>FY83</u>	<u>FY84</u>	<u>FY85</u>	<u>FY86</u>	<u>FY87</u>	<u>FY88</u>	<u>(est)</u> <u>FY89</u>
Gross Appropriations (in thousands of dollars)	\$28,929	30,109	31,763	35,451	38,618	41,828	45,300	48,457
Tuition Income (excl. of fees) in thousands of dollars	\$ 8,887	9,923	10,075	10,285	10,628	11,130	11,368	11,762
Tuition Income as % of Gross Appropriations	30.72%	32.96%	31.72%	29.01%	27.52%	26.61%	25.09%	24.27%

Source: MSC Budget Office  
OIR, 07/88

Table VIII-7

Tuition Income (in thousands) per FTE  
FY82 through FY89

	<u>Fiscal Year</u>								<u>Change</u>
	<u>FY82</u>	<u>FY83</u>	<u>FY84</u>	<u>FY85</u>	<u>FY86</u>	<u>FY87</u>	<u>FY88</u>	<u>(est)</u> <u>FY89</u>	<u>FY82-FY89</u>
Tuition Income (excl. of Fees)	\$8,887	9,923	10,075	10,285	10,628	11,130	11,368	11,762	+32.4%
FTE Enrollment	9,906	9,706	9,486	9,270	8,906	8,224	7,703	7,796	-21.3%
Tuition Income per FTE	\$ 897	1,022	1,062	1,109	1,193	1,353	1,476	1,509	+68.2%
Tuition Income in FY82 Dollars*	\$8,887	9,476	9,162	9,017	9,019	8,989	8,744	8,616	-3.0%
Tuition Income per FTE, in FY82 Dollars	\$ 897	976	966	973	1,013	1,093	1,135	1,105	+23.2%

\*Based on CPI for Northern New Jersey and New York Metropolitan Area.  
FY89 inflation estimated at 5%.

Source: MSC Budget Office  
OIR, 07/88

Table VIII-8

**Financial Aid Disbursed by  
Type of Program and Academic Year\***

		(final)	(est)**	CM***
	<u>AY1985-86</u>	<u>AY1986-87</u>	<u>AY 1987-88</u>	<u>AY 1988-89</u>
<b>GRANTS</b>				
Pell (formerly BEOG)	\$2,525,963	\$1,925,606	\$2,051,214	\$2,000,000
Supplem. Educ. Opp. Grants	185,580	192,250	227,000	200,000
State Scholar. Tuit. Aid Grants	2,329,310	2,218,821	2,506,000	2,700,000
Educ. Opp. Fund Pgm. (EOF)	297,183	317,307	466,000****	466,000
MSC Clg. Dev. Fund	<u>51,197</u>	<u>54,429</u>	<u>57,000</u>	<u>60,000</u>
<b>TOTAL GRANTS</b>	<u>\$5,389,233</u> (53.1%)	<u>\$4,608,413</u> (52.0%)	<u>\$5,307,214</u> (57.0%)	<u>\$5,426,000</u> (67.0%)
 <b>LOANS</b>				
NDS Loans (now Perkins loans)	\$ 506,044	673,781	725,000	700,000
Guar. Std. Loans	<u>3,638,163</u>	<u>3,069,068</u>	<u>2,785,486</u>	<u>1,500,000</u>
<b>TOTAL LOANS</b>	<u>\$4,144,207</u> (40.8%)	<u>3,742,879</u> (42.0%)	<u>3,510,486</u> (38.0%)	<u>2,200,000</u> (27.0%)
 <b>STD. EMPLOYMENT</b>				
Clg. Work-Stdy. Pgm.	\$ 341,385	307,498	290,000	300,000
Std. Assistants	<u>279,698</u>	<u>229,659</u>	<u>129,000</u>	<u>197,000</u>
<b>TOTAL STD. EMPLOYMENT</b>	<u>\$ 621,083</u> (6.1%)	<u>537,157</u> (6.0%)	<u>419,000</u> (5.0%)	<u>497,000</u> (6.0%)
 <b>GRAND TOTAL</b>	<u>\$10,154,523</u> (100.0%)	<u>\$8,888,449</u> (100.0%)	<u>\$9,236,700</u> (100.0%)	<u>\$8,123,000</u> (100.0%)

\*Excludes PLUS loans and known private scholarships, together totalling approx. \$400,000 in '85/'86.

\*\*Based on activity through 2/15/88.

\*\*\*Based on expected effect of "Congressional Methodology."

\*\*\*\*Increased level of awards and increased number of freshmen.

Approximately 2.5% of aid funds are disbursed to graduate students.

Source: Financial Aid Office

OIR, 07/88

Table VIII-9

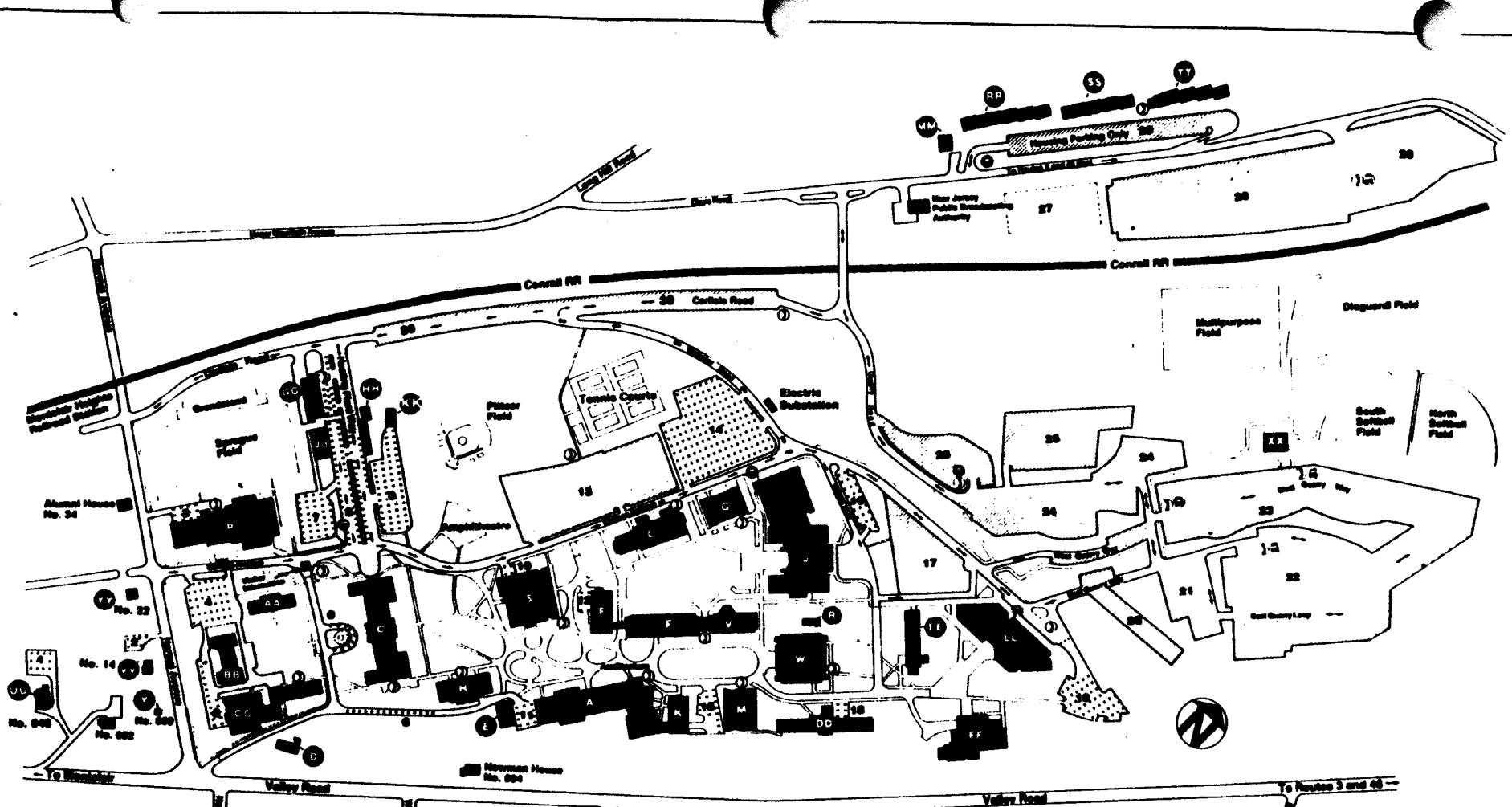
Undergraduate Financial Aid Recipients  
as  
Proportion of Headcount Enrollment

	<u>Academic Year</u>						
	<u>1981-82</u>	<u>1982-83</u>	<u>1983-84</u>	<u>1984-85</u>	<u>1985-86</u>	<u>1986-87</u>	<u>1987-88</u>
Number of Undergraduate Financial Aid Recipients*	4632	4404	3950	4147	4234	4025	3550**
Undergraduate Headcount Enrollment (average of Fall and Spring)	11738	11362	11397	11028	10658	9890	9682
Recipients as Proportion of Headcount Enrollment	39.5%	38.8%	34.7%	37.6%	39.7%	40.7%	36.7%

\*A recipient may receive aid from more than one program.

\*\*Several factors contributed to a slight decline in the number of students receiving financial aid from programs listed on Table VIII-8. New Federal regulations reduced eligibility for the GSL program. Improved targeting of Perkins Loan funds contributed to fewer students obtaining loans; however, total funds awarded were increased. Reduced funding and lack of applicants contributed to decline in Student Assistants (SA) work program. Lastly, reduction in enrollment also was a factor in 1987-88 activity.

Source: Financial Aid Office  
OIR, 07/88



**MONTCLAIR STATE COLLEGE**

**UPPER MONTCLAIR N.J.**

TELEPHONE: 391-483-4888

**PARKING**

- 1 FACULTY and STAFF
- 2 FACULTY and STAFF
- 3 PHYSICAL EDUCATION and ATHLETIC DEPT.
- 4 FACULTY and STAFF
- 5 STUDENT HOUSING STAFF
- 6 VISITOR
- 7 FACULTY and STAFF
- 8 FACULTY and STAFF
- 9 FACULTY and STAFF (Compact Cars Only)
- 10 LIBRARY FACULTY and STAFF
- 11 FACULTY and STAFF
- 12 INDUSTRIAL ARTS DEPT. FACULTY and STAFF
- 13 STUDENT
- 14 FACULTY and STAFF
- 15 DISABLED
- 16 VISITOR
- 17 STUDENT
- 18 STUDENT HOUSING STAFF
- 19 STUDENT HOUSING STAFF
- 20 STUDENT
- 21 STUDENT
- 22 STUDENT
- 23 STUDENT
- 24 STUDENT
- 25 STUDENT
- 26 STUDENT
- 27 STUDENT

**SYMBOLS**

- ⓞ EMERGENCY PHONE
- Ⓢ SHUTTLE BUS STOP

**BUILDINGS**

- A LIFE HALL
- B MEDICAL HALL
- C FINES and PERFORMING ARTS
- D COLLEGE HALL—ADMINISTRATION & ADMISSIONS
- E GILBERT HOUSE—PSYCHOLOGICAL SERVICES
- F ACADEMIC ADVISING & TUTORIAL CENTER
- G FINLEY HALL
- H PARTNORSE HALL—HUMANITIES
- I MOOREHEAD HALL
- J BUSINESS ADMINISTRATION
- K STUDENT CENTER
- L SPEECH BUILDING
- M CALCOA FINE ARTS BUILDING
- N MEACHERN MUSIC BUILDING
- P PAMPER SCHOOL CENTER—GYMNASIUM and SWIMMING POOL
- R DROP-IN CENTER
- S SPRAGUE LIBRARY
- V MALLORY HALL
- W RICHARDSON HALL—MATHEMATICAL & NATURAL SCIENCES
- Y CONTRASTS EDUCATION
- AA CHAPIN HALL—PROFESSIONAL STUDIES
- BB RUBE HALL—SOCIAL SCIENCES
- CC FREEMAN HALL—STUDENT HOUSING
- DD STONE HALL—STUDENT HOUSING
- EE WEBSTER HALL—STUDENT HOUSING
- FF BORN HALL—STUDENT HOUSING
- GG MAINTENANCE BUILDING
- JJ HEATING PLANT
- LL BLANTON HALL—STUDENT HOUSING & HEALTH CENTER
- MM PSYCHO-EDUCATIONAL SCHOOL
- RR CLOVE RD. APTS. (100)—STUDENT HOUSING
- SS CLOVE RD. APTS. (200)—STUDENT HOUSING
- TT CLOVE RD. APTS. (300)—STUDENT HOUSING
- UU VAN REYPER/BOND HOUSE
- VV PHILOSOPHY FOR CHILDREN
- XX RECREATION BUILDING
- YY FACULTY/STUDENT COOPERATIVE INC.