

MONTCLAIR STATE

UNIVERSITY

Annual Institutional Profile Report

Fall 2014

September, 2014

PREFACE

Now in its second century, Montclair State University has earned a national reputation for excellence and innovation. The University offers a broad array of undergraduate and graduate programs in the liberal arts and sciences, as well as in professional fields in business, the arts, and education. Recent recognition of the University's quality has come from Forbes Magazine, which again recognized Montclair State University as one of the top public post-secondary institutions in New Jersey.

Montclair State is currently in a period of significant growth and development with enrollments of over 20,000 students, new programs, new faculty, and expanding physical facilities. As the University enters its second century, it takes pride in its rich history of bold educational innovation, inspired teaching, and vital service to the state.

Institutional Mission

Montclair State University is committed to serving the educational needs of New Jersey with programs characterized by academic rigor and currency in the development of knowledge and its applications. The University will offer a comprehensive range of baccalaureate, master's and certificate programs and a focused portfolio of doctoral programs that are closely aligned with the University's academic strengths and the needs of the state.

The University will recruit faculty with exceptional academic or professional credentials and a deep commitment to the pursuit of their development as teachers and scholars. The University will admit to study with this faculty, students who have demonstrated the potential for high achievement, diligence in the pursuit of their education, and high aspirations for using their education. The University will be inexorably committed to the maintenance of a learning community that is deeply and broadly reflective of the diverse population of New Jersey.

All University programs will develop in students the ability to discover, create, evaluate, apply, and share knowledge in a climate characterized by tolerance and openness in the exploration of ideas. Curricular and co-curricular programs will cultivate the ability to think critically, to act ethically, and to become informed citizen-participants prepared to assume leadership roles in a democracy. Recognizing the increasing connectedness of the world, the University will ensure that all students develop an understanding of global issues and of their responsibilities as citizens of the world.

The University will serve as a center for the creation of new knowledge and for the development of innovative applications of existing knowledge and as a center for pedagogical and artistic excellence and creativity. The University seeks to focus the professional activities of its faculty and the educational endeavors of its students on the enduring disciplines that will continue to constitute the knowledge base of an educated citizenry in the 21st century, as well as on the more specific and changing areas of study that have particular relevance to the region served by the University.

The University will play a role beyond the campus community, partnering and collaborating at the local, state, national and international levels to make positive contributions to addressing issues of importance to society, to enable students to experience their ability to use knowledge in constructive ways in the world, and to share the rich array of intellectual and cultural resources of the University with the people of New Jersey.



Dr. Susan A. Cole
President
Montclair State University

I. TABLE OF CONTENTS

II. Data by Category 1

SECTION A: Accreditation Status 1

SECTION B: Number of Students Served 4

SECTION C: Characteristics of Undergraduate Students 5

SECTION D: Student Outcomes 11

SECTION E: Faculty Characteristics 14

SECTION F: Characteristics of the Trustees..... 16

SECTION G: A Profile of the Institution..... 17

SECTION H: Major Research and Public Service Activities..... 21

SECTION I: Major Capital Projects..... 62

Appendix 1: Economic Impact Report

Appendix 2: University Authors, 2014

II. DATA BY CATEGORY

A. Accreditation Status

Montclair State University is accredited by the Commission on Higher Education of the Middle States Association of Colleges and Schools. Programs leading to a degree or certificate (not certification) are approved by the Office of the Secretary of Higher Education of the State of New Jersey. Programs leading to certification are approved by the New Jersey Department of Education using the standards of the National Association of State Directors of Teacher Education and Certification.

Other academic accreditations include:

- National Council for the Accreditation of Teacher Education (NCATE) — for programs preparing elementary and secondary school teachers, as well as administrative and school service personnel
- AACSB International — The Association to Advance Collegiate Schools of Business (baccalaureate and graduate degree programs in business, School of Business)
- Commission on Accreditation of Allied Health Education Programs (Athletic Training major, BS, Department of Exercise Science and Physical Education, College of Education and Human Services)
- Accreditation Council for Education in Nutrition and Dietetics (ACEND) of the Academy of Nutrition and Dietetics (Didactic Program in Dietetics, Baccalaureate level; Dietetic Internship, Department of Health and Nutrition Sciences)
- Computing Accreditation Commission (CAC) of the Accreditation Board for Engineering and Technology (ABET) (Computer Science major, concentration in Professional Computing, BS, Department of Computer Science, College of Science and Mathematics)
- Council for the Accreditation of Counseling and Related Education Programs (CACREP) – Counseling, M.A.
- Council on Academic Accreditation (CAA) in Audiology and Speech-Language Pathology of the American Speech Language Hearing Association (ASHA). CAA has accredited the M.A. concentration in Speech-Language Pathology; and the doctoral program in Audiology (ScD) in the Department of Communication Sciences and Disorders, College of Humanities and Social Sciences
- National Association of Schools of Art and Design (Fine Arts major, concentrations in Art History, Fine Arts Education, Studio, BA; Fine Arts/Studio major and concentrations in Industrial Design and in Filmmaking, BFA; Fine Arts major, concentration in Studio, MA; Studio Art major, MFA, Department of Art and Design, College of the Arts)
- National Association of Schools of Dance (Dance major and concentration in Musical Theatre, BFA, Department of Theatre and Dance, College of the Arts)

Annual Institutional Profile of Montclair State University, 2014

- National Association of Schools of Music (Music Therapy major, BA; Music major, concentrations in Musical Theatre, Performance, Theory/Composition, BMus; Music major, concentrations in Music Education, Music Therapy, Performance, and Theory/Composition, MA, John J. Cali School of Music, College of the Arts)
- National Association of Schools of Theatre (Theatre major with concentrations in Acting and in Production/Design, BFA; Theatre major with concentrations in Arts Management, Production/Stage Management, and Theatre Studies, MA, Department of Theatre and Dance, School of the Arts)

Program approvals include:

- American Alliance for Health, Physical Education, Recreation, and Dance (AAHPERD)/American Association for Health Education (AAHE): Health Education major, BS, initial teacher certification, P-12
- American Alliance for Health, Physical Education, Recreation and Dance (AAHPERD)/National Association for Sport and Physical Education (NASPE): Physical Education major, BS, initial teacher certification, P-12
- American Bar Association: Justice Studies major, Paralegal Studies concentration, BA. Paralegal Studies minor; Post-baccalaureate Certificate Program in Paralegal Studies
- American Chemical Society: Biochemistry major, BS; Chemistry major, BS. Chemistry minor; Chemistry major, MS; Chemistry major, Biochemistry concentration, MS
- American Music Therapy Association: Music Therapy major, BA; Music major, concentration in Music Therapy, MA
- Council for Exceptional Children: Early Childhood Special Education major, MEd; Learning Disabilities major, MEd; Learning Disabilities Teacher-Consultant, post-master's certification; Communication Sciences and Disorders major, concentration in Speech-Language Pathology, MA
- Educational Leadership Constituent Council (ELCC): Educational Leadership major, MA
- International Reading Association (IRA): Reading major, MA; Reading Specialist, post-baccalaureate educational services certification, P-12
- National Association for the Education of Young Children (NAEYC): Family and Child Studies major, concentration in Early Childhood, BA, initial teacher certification, P-3
- National Association for Music Therapy: Music Therapy major, BA
- National Council for the Social Studies (NCSS): Anthropology major, BA, initial teacher certification, P-12; History major, BA, initial teacher certification, P-12; Political Science major, BA, initial teacher certification, P-12; Sociology major, BA, initial teacher certification, P-12; Geography major, BA, initial teacher certification, P-12; Economics major, BA, initial teacher certification, P-12; Social Studies, MAT, initial teacher certification, P-12; Social Studies, post-baccalaureate teacher certification, P-12
- National Council of Teachers of English (NCTE): English major, BA, initial teacher certification, 6-12; English, MAT, initial teacher certification, 6-12; English, post-baccalaureate teacher certification, 6-12

Annual Institutional Profile of Montclair State University, 2014

- National Council of Teachers of Mathematics (NCTM): Mathematics major (BS), initial teacher certification, 6-12; Mathematics, MAT, initial teacher certification, 6-12; Mathematics, post-baccalaureate teacher certification, 6-12
- Teachers of English to Speakers of Other Languages (TESOL): Linguistics major BA, initial teacher certification, P-12; Teaching English as a Second Language, MAT, initial teacher certification, P-12; Teaching English as a Second Language, post-baccalaureate teacher certification, P-12

B. Number of Students Served

Fall 2013 Undergraduates

In fall 2013, 15,431 undergraduates enrolled at Montclair State University (see Table II.B.1). This headcount was up 30.6% from fall 2004, and up 6.9% from fall 2012.

Table II.B.1: Undergraduate Enrollment by Attendance Status, Fall 2013		
	Number	Percent
Full-time	13,356	86.6%
Part-time	2,075	13.4%
Total	15,431	100.0%

The proportion of undergraduates studying full-time also rose over the 10-year period. The percent of undergraduates enrolled full-time increased nearly 6 percentage points, from 80.7% in fall 2004 to 86.6% in fall 2013.

Fall 2013 Graduate Students

Montclair State University enrolled 4,033 graduate students in fall 2013 (see Table II.B.2). This graduate student headcount was up 2.1% from fall 2012, and 5.6% from fall 2004.

Table II.B.2: Graduate Enrollment by Attendance Status, Fall 2013		
	Number	Percent
Full-time	1,346	33.4%
Part-time	2,687	66.6%
Total	4,033	100.0%

The proportion of graduate students studying full-time was higher than 10 years earlier. The percent of graduate students enrolled full-time rose nearly 12 percentage points, from 21.8% in fall 2004 to 33.4% in fall 2013.

FY13 (12-Month) Unduplicated Enrollments

While most students are admitted and enroll at the beginning of each academic year, thousands of additional students enroll during the University's other sessions that run in the winter, spring, and summer. During FY13, nearly 22,000 students attended MSU during one or more of its academic sessions (see Table II.B.4).

Table II.B.4: Unduplicated Enrollment, FY13 (IPEDS 12-Month)			
	Headcount	Credit Hours	FTE
Undergraduate	16,649	415,712	13,857
Graduate	4,991	58,071	2,420
Professional Practice	38	1,244	52
Total	21,678	475,027	16,329

C. Characteristics of Undergraduate Students

Fall 2013 Freshmen

A total of 13,012 individuals applied for admission as first-time freshmen to Montclair State University in fall 2013, up 48% from fall 2004. The University admitted 65.3% of these applicants, and 3,040 of those who were admitted to the University enrolled as freshmen for a yield of 35.8%. The fall 2013 admissions yield was approximately 4.7 percentage points lower than in fall 2004.

Fall 2013 freshmen entered MSU as either regular admits, special admits, or students admitted through the Educational Opportunity Fund (EOF) program. By admitting students using different admissions categories, the University fulfilled the hopes and aspirations of more of its applicants. Of MSU's 3,040 first-time freshmen, 92.7% were Regular Admits, 4.1% were admitted through the EOF program, and 3.2% were Special Admits (see Table II.C.1).

Table II.C.1 contains information on the average SAT scores of MSU's fall 2013 enrolled full-time (N=3,023) and part-time (N=10) first-time freshmen. It should be noted that the full-time, first-time freshman population (3,023) differs slightly from the cohort of full-time, first-time undergraduates (3,030) that we will track for Federal reporting purposes using the IPEDS Graduation Rate Survey (GRS). The IPEDS cohort also includes full-time, first-time students who are admitted above the freshman level because of advanced placement credits.

Type	Full-Time			Part-Time				
	Number	Math	Read	Write	Number	Math	Read	Write
Regular	2,695	500	480	487	9	477	461	466
EOF	123	450	414	418	0	--	--	--
Special	89	476	440	449	0	--	--	--
All	2,907	497	476	483	9	477	461	466
Missing	116	--	--	--	1	--	--	--

In fall 2013, Montclair State University used the College Board's suite of Accuplacer tests to assess college readiness in elementary algebra. Incoming freshmen whose SAT-Math scores were below 550, or who failed to attain at least a B- score in Algebra II in high school, were required to take the Accuplacer elementary algebra portion of Accuplacer.

Between 2007 and 2013, the number of undergraduates enrolled in one or more remedial courses declined 69%, while the number of full-time, first-time students in remediation declined 65%.

Table II.C.2: Enrollment in Remedial Courses, Fall 2013

Total Fall 2013 Undergraduate Enrollment	Number of Students Enrolled in One or More Remedial Courses	Percent of Total
15,431	432	2.8%
Total Number of Full-time, First-time Students	Number of FTFT Students Enrolled in One or More Remedial Courses	Percent of FTFT Students Enrolled in One or More Remedial Course
3,030	371	12.2%
Remedial Subject Area	Number of FTFT Students Enrolled in	Percent of FTFT Students Enrolled in
Reading	0	0.0%
Writing	0	0.0%
Math Computation	0	0.0%
Elementary Algebra	371	12.2%

A CIRP survey administered to fall 2013 first-time freshmen revealed that 88% considered MSU their first or second choice among colleges. The survey also revealed that the top three reasons freshmen chose MSU were: a) its good academic reputation (57%), b) its affordability (53%), and c) its good reputation for social activities (47%).

The profile of the fall 2013 entering class reflects the continuing commitment of the University to an ethnically and racially diverse student body. Excluding unknowns, 10.7% of first-time undergraduates identified themselves as African American, 6.3% as Asian, 24.9% as Latino/a, and 1.6% as non-resident aliens. Over 62% of first-time undergraduates were female.

Fall 2013 Undergraduates

In fall 2013, a total of 19,464 students attended Montclair State University. Of this total, 15,431 (or 79.3% of all enrollees) were registered as undergraduates. The number of undergraduates attending the University rose 9% between fall 2009 and fall 2013. Nearly 87% of fall 2013 undergraduates attended the University full-time, up approximately 1 percentage point from fall 2009. MSU's undergraduates were racially/ethnically diverse. Excluding unknowns, 25.5% of undergraduates identified themselves as Latino/a, 10.2% as African American, 5.8% as Asian, 51.8% White, and 2.6% non-resident aliens (see Table II.C.3.a).

TABLE II.C.3.a: Undergraduate Enrollment by Race/Ethnicity, Fall 2013

	Full-time		Part-time		Total	
	Number	Percent	Number	Percent	Number	Percent
Native Amer.	5	0.0%	2	0.1%	7	0.0%
African Amer.	1,229	9.2%	200	9.6%	1,429	9.3%
Asian	718	5.4%	118	5.7%	836	5.4%
Latino/a	3,102	23.2%	463	22.3%	3,565	23.1%
White	6,316	47.3%	918	44.2%	7,234	46.9%
Non-Res. Alien	305	2.3%	53	2.6%	358	2.3%
Unknown	1,681	12.6%	321	15.5%	2,002	13.0%
Total	13,356	100.0%	2,075	100.0%	15,431	100.0%

In fall 2013, 61% of all undergraduates were female, and the average age of the undergraduate population was 21.98 years (see Tables II.C.3.b and II.C.3.c).

TABLE II.C.3.b: Undergraduate Enrollment by Sex, Fall 2013

	Full-time		Part-time		Total	
	Number	Percent	Number	Percent	Number	Percent
Female	8,197	61.4%	1,212	58.4%	9,409	61.0%
Male	5,159	38.6%	863	41.6%	6,022	39.0%
Total	13,356	100.0%	2,075	100.0%	15,431	100.0%

Annual Institutional Profile of Montclair State University, 2014

TABLE II.C.3.c: Undergraduate Enrollment by Age, Fall 2013

	Full-time		Part-time		Total	
	Number	Percent	Number	Percent	Number	Percent
Less than 18	23	0.2%	33	1.6%	56	0.4%
18-19	4,636	34.7%	46	2.2%	4,682	30.3%
20-21	4,814	36.0%	197	9.5%	5,011	32.5%
22-24	2,784	20.8%	788	38.0%	3,572	23.1%
25-29	736	5.5%	423	20.4%	1,159	7.5%
30-34	181	1.4%	205	9.9%	386	2.5%
35-39	73	0.5%	123	5.9%	196	1.3%
40-49	78	0.6%	163	7.9%	241	1.6%
50-64	31	0.2%	87	4.2%	118	0.8%
More than 64	0	0.0%	10	0.5%	10	0.1%
Unknown	0	0.0%	0	0.0%	0	0.0%
Total	13,356	100.0%	2,075	100.0%	15,431	100.0%

During AY12-13, MSU's undergraduates received financial aid from Federal, State, University, and private sources. Aid took multiple forms, from grants and scholarships, through loans and waivers. For those who needed financial assistance, the MSU Alumni Association and the MSU Foundation sponsored a number of scholarships, and special MSU program awards were substantial, amounting to nearly \$4.5 million during AY11-12. During the same fiscal year, Federal grants, loans, and work-study programs amounted to over \$102 million.

MSU distributed an additional \$25.2 million in state-funded financial aid during AY12-13, including both scholarships and NJCLASS loans (see Table II.C.4). A total of 5,158 awards were made to MSU students, including 3,876 TAG Awards, 456 NJCLASS Loans, and 664 EOF Awards.

Table II.C.4: Financial Aid from Federal, State & Institution-Funded Programs, AY12-13

	Recipients	\$ Dollars	\$/Recipient
<u>STATE PROGRAMS</u>			
TAG	3,876	\$18,940,000	\$4,886
EOF	664	\$773,000	\$1,164
Distinguished Scholars	28	\$26,000	\$929
Urban Scholars	30	\$27,000	\$900
NJCLASS Loans	456	\$4,990,000	\$10,943
NJ Stars	104	\$424,000	\$4,077
OSRP	0	\$0	\$0
<u>FEDERAL PROGRAMS</u>			
Pell Grants	5,812	\$23,744,000	\$4,085
College Work Study	450	\$477,000	\$1,060
Perkins Loans	461	\$666,000	\$1,445
SEOG	495	\$698,000	\$1,410
Stafford Loans (Subsidized)	7,986	\$33,010,000	\$4,133
Stafford Loans (Unsubsidized)	8,375	\$32,358,000	\$3,864
PLUS Loans	897	\$11,467,000	\$12,784
SMART & ACG or other	0	\$0	\$0
<u>INSTITUTIONAL PROGRAMS</u>			
Grants/Scholarships	961	\$4,479,000	\$4,661
Loans	0	\$0	\$0

Of MSU's 3,040 full-time, first-time undergraduates who entered in fall 2013, 96% were New Jersey residents (see Table II.C.5). Most were from Bergen (500), Passaic (362), and Essex (351) counties.

Table II.C.5: Full-time, First-Time Student Enrollment by State of Residence, Fall 2013			
State Residents	Non-State Residents	Total Students	% State Residents
2,928	112	3,040	96.3%

Fall 2013 Graduate Students

Of the 19,464 students who attended Montclair State University in fall 2013, 4,033 (20.7%) were graduate students. Graduate student enrollment was essentially unchanged between fall 2009 (4,032) and fall 2013 (4,033).

Most graduate students (67%) attended MSU part-time, taking fewer than nine credits per semester. Seventy-two percent of fall 2013 graduate students were female, and the average age of the graduate student population was 31.47 years. Excluding unknowns, 10% of graduate students identified themselves as African American, 5% as Asian, 15% as Latino/a, 64% as White, and 5% as non-resident aliens. Nearly 92% of MSU's graduate students are New Jersey residents.

D. Student Outcomes

Over 63% of all full-time, first-time freshmen who entered MSU in the fall of 2007 earned a degree within six years of entry (see Table II.D.1.a). One deceased student is excluded from calculations.

TABLE II.D.1.a: Four-, Five-, and Six-Year Graduation Rates of Fall 2007 Full-Time, First-Time Freshmen by Race/Ethnicity

	Graduated in 4 Years		Graduated in 5 Years		Graduated in 6 Years	
	Number	Percent	Number	Percent	Number	Percent
African Amer.						
Cohort=181	56	30.9%	97	53.6%	111	61.3%
Asian						
Cohort=136	51	37.5%	89	65.4%	93	68.4%
Latino/a						
Cohort=446	116	26.0%	225	50.4%	257	57.6%
White						
Cohort=1,174	447	38.1%	710	60.5%	763	65.0%
Non-Res. Alien						
Cohort=23	9	39.1%	13	56.5%	15	65.2%
Other*						
Cohort=108	32	29.6%	63	58.3%	72	66.7%
Total**						
Cohort=2,068	711	34.4%	1,197	57.9%	1,311	63.4%

* Includes Native American and Unknown Race/Ethnicity. **One deceased student excluded.

Nearly 96% of all full-time, first-time undergraduates who entered MSU in fall 2012 re-enrolled in spring 2013, and 86.0% returned in fall 2013 (see Table II.D.2).

TABLE II.D.2: Third-Semester Retention of First-Time Undergraduates, Fall 2012 to 2013

	Original Cohort	Retained		Not Retained	
	Number	Number	Percent	Number	Percent
Full-time	2,202	1,894	86.0%	308	14.0%
Part-time	14	8	57.1%	6	42.9%
Total	2,216	1,902	85.8%	314	14.2%

Transfer Student Outcomes

Of the 1,061 students who entered MSU as full-time transfer students in fall 2007, 53% earned their degrees within three years, 67% earned degrees within four years, and 75% earned degrees within six years. The one-year retention rate for full-time transfer students who entered in fall 2012 was 84%.

Other Student Outcomes

Using data from the National Student Clearinghouse, 31,097 alumni who earned Bachelor's degrees over a 13-year period were tracked to determine how many had furthered their education by enrolling in graduate school. The analysis revealed that 11,271 (36%) of these alumni continued their formal education, and of those who continued their education, 4,534 (40%) earned graduate degrees, including 391 doctorates and 4,143 Master's degrees.

A recent survey of alumni conducted one year from graduation revealed that 88% of Bachelor's degree recipients were gainfully employed. A majority (89%) of employed alumni said they worked in New Jersey, thus contributing to the State's economy. Over 70% said they held jobs that were related to their MSU majors.

Montclair State University participates in the Voluntary System of Accountability (VSA) that is co-sponsored by the Association of Public and Land-grant Universities (APLU) and the American Association of State Colleges and Universities (AASCU) with support from the Lumina Foundation. As indicated on the VSA web site (www.voluntarysystem.org) "The Voluntary System of Accountability is an initiative by public 4-year universities to supply basic, comparable information on the undergraduate student experience to prospective students, families, and other higher education stakeholders through a common web report – the College Portrait." MSU is one of only four institutions in New Jersey that voluntarily share information about student outcomes to all interested parties, clearly demonstrating our commitment to both data transparency and the continuous improvement of student learning outcomes. Montclair State University's VSA College Profile can be viewed at www.collegeportraits.org by clicking on "College Portraits," and selecting New Jersey under the "Colleges by State" tab.

Local assessment efforts are led by the Committee on University Effectiveness (CUE). During the past year, CUE collected student learning outcome goals, information on assessment methods, and assessment data from academic departments related to learning in the major, and assessed student learning in general education using the Collegiate Learning Assessment (CLA) instrument.

The CLA was administered to freshmen and seniors during AY2013-14, and we are awaiting the final results. Earlier results from the 2010-11 administration were very positive, showing clear freshman to senior learning gains, as well as favorable performance, particularly for seniors, relative to the national data from 184 participating institutions. Faculty will closely analyze the results during the coming academic year to determine ways to improve learning in general education even further.

CUE also works closely with Administrative and Student Services Divisions (Budget and Planning, Finance and Treasury, Human Resources, Information Technology, Student Development and Campus Life, University Advancement, and University Facilities) to involve them in the assessment

of even broader areas of institutional effectiveness. The current focus of this effort is on achieving the 132 objectives of the University's Strategic Plan approved in October 2011. Information on planning unit goals and objectives from every Division of the University are being collected, along with their assessment plans, methods, and results. All assessment data related to Institutional Effectiveness are being collected and stored in TracDat.

CUE's efforts are also informed by information gathered from students through the University's participation in the National Survey of Student Engagement (NSSE), the Noel-Levitz Student Satisfaction Inventory, and the Cooperative Institutional Research Program (CIRP) surveys of entering freshman and exiting seniors. Faculty and staff perspectives on student outcomes are revealed through the Faculty Survey of Student Engagement (FSSE), the Higher Education Research Institute (HERI) survey of faculty, and the Noel-Levitz Institutional Priorities Survey. These national surveys are supplemented with a number of local surveys of alumni, entering transfer and graduate students, and University employees (both faculty and staff).

E. Faculty Characteristics

In fall 2013, Montclair State University employed 585 full-time faculty members (see Table II.E.1).

TABLE II.E.1: Full-time Faculty by Race/Ethnicity, Sex, Tenure Status, and Academic Rank, Fall 2013															
	Female					Male					Total				
	Professor	Associate	Assistant	Other	Total	Professor	Associate	Assistant	Other	Total	Professor	Associate	Assistant	Other	Total
Native Amer.	0	0	0	0	0	0	0	0	0	0	0	0	0	0	0
Tenured	0	0	0	0	0	0	0	0	0	0	0	0	0	0	0
Untenured	0	0	0	0	0	0	0	0	0	0	0	0	0	0	0
African Amer.	5	7	11	0	23	6	8	3	0	17	11	15	14	0	40
Tenured	5	7	8	0	20	6	7	0	0	13	11	14	8	0	33
Untenured	0	0	3	0	3	0	1	3	0	4	0	1	6	0	7
Asian	8	14	10	0	32	19	14	6	0	39	27	28	16	0	71
Tenured	7	13	1	0	21	19	14	1	0	34	26	27	2	0	55
Untenured	1	1	9	0	11	0	0	5	0	5	1	1	14	0	16
Latino/a	5	9	2	5	21	5	10	3	2	20	10	19	5	7	41
Tenured	4	9	1	0	14	5	9	1	0	15	9	18	2	0	29
Untenured	1	0	1	5	7	0	1	2	2	5	1	1	3	7	12
White	54	80	42	15	191	74	78	45	5	202	128	158	87	20	393
Tenured	54	74	12	0	140	72	70	6	0	148	126	144	18	0	288
Untenured	0	6	30	15	51	2	8	39	5	54	2	14	69	20	105
Non-Res. Alien	0	1	9	0	10	0	3	6	1	10	0	4	15	1	20
Tenured	0	1	2	0	3	0	2	1	0	3	0	3	3	0	6
Untenured	0	0	7	0	7	0	1	5	1	7	0	1	12	1	14
Missing	0	2	3	4	9	3	6	2	0	11	3	8	5	4	20
Tenured	0	2	0	0	2	2	5	0	0	7	2	7	0	0	9
Untenured	0	0	3	4	7	1	1	2	0	4	1	1	5	4	11
Total	72	113	77	24	286	107	119	65	8	299	179	232	142	32	585
Tenured	70	106	24	0	200	104	107	9	0	220	174	213	33	0	420
Untenured	2	7	53	24	86	3	12	56	8	79	5	19	109	32	165

The number of full-time faculty increased 12% from fall 2008 (N=524) to fall 2013 (N=585). From fall 2008 to fall 2013, the number of full-time male faculty members rose 8% (276 to 299), while the number of full-time female faculty members increased 15% (248 to 286).

MSU's full-time faculty was augmented by a highly-trained cadre of adjunct professors, visiting specialists, administrators, and professional staff (see Table II.F.2).

Table II.E.2: Percent of Course Sections Taught By Full-Time Faculty, Fall 2013						
No. of Sections	# taught by F-T Faculty	% taught by F-T Faculty	# taught by P-T Faculty	% taught by P-T Faculty	# taught by Others	% taught by Others
4,305	2,109	49.0%	1,869	43.4%	327	7.6%

Table II.E.3 shows IPEDS headcounts of fall 2013 employees in instructional titles. Note that the IPEDS headcount of full-time instructional staff (585) includes employees on paid leaves (e.g., sabbaticals), while excluding employees on unpaid leaves (i.e., not all of these 585 taught in the fall).

Table II.E.3: Headcount Ratio of Full- to Part-Time Faculty, Fall 2013				
Total No. of Faculty	No. Full-Time	Pct. Full-Time	No. Part-Time	Pct. Part-Time
1,689	585	34.6%	1,104	65.4%

Annual Institutional Profile of Montclair State University, 2014

F. Characteristics of the Trustees

1. Race/Ethnicity and Gender of Governing Board

	White	Black	Hispanic	Asian	American Indian	Non-Res Alien	Unknown	Total
Male	10	3						13
Female	4							4
Total	14	3	0	0	0	0	0	17

2. Members of the Board of Governors and/or Trustees

Name	Title	Affiliation
Susan L. Blount	Senior Vice-President and General Counsel	Prudential Financial, Inc.
Reginald Bledsoe	Student	Montclair State University
Rose C. Cali	Education Advocate	
Michael L. Carter	Managing Director	RBC Capital Markets
Francis M.C. Cuss	Executive Vice President & Chief Scientific Officer	Bristol-Myers Squibb Company
Mitchell E. Hersh	President and CEO	Mack-Cali Realty
George J. Hiltzik	Senior Executive	N.S. Bienstock, Inc.
Douglas L. Kennedy	CEO	Peapack Gladstone Bank
Ralph A. LaRossa	President and COO	PSE&G
Thomas Maguire	Senior Vice President	Verizon Telecom
John L. McGoldrick	Chairman of the Board	Zimmer Holdings
William T. Mullen	President	NJ State Building and Construction Trades Council AFL-CIO
Christine L. Padilla	Owner and Consultant	BIT Solutions, LLC
Preston D. Pinkett III	Chief Executive Officer	City National Bank of New Jersey
R. Van Dyk	President and CEO	Van Dyk Health Care
Susan A. Cole, <i>ex officio</i>	President	Montclair State University
Anthony Fasano, <i>ex officio</i>	Student	Montclair State University

3. URL

If your organization has a web site that includes information on your governing board, please report the URL.

URL <http://www.montclair.edu/board-of-trustees/>

G. A Profile of the Institution

Montclair State University offered the following programs and majors at the undergraduate and graduate levels in fall 2013:

FALL 2013 ACTIVE DEGREE PROGRAMS

DEGREE PROGRAMS	CIP CODE*
<i>BACHELOR OF ARTS</i>	
ANTHROPOLOGY	450201
CHILD ADVOCACY AND POLICY	440701
CLASSICS	161201
COMMUNICATION AND MEDIA ARTS	090199
COMMUNICATION STUDIES	090101
DANCE	131324
ECONOMICS	450601
ENGLISH	230101
FAMILY AND CHILD STUDIES	190101
FASHION STUDIES	500407
FINE ARTS	500701
FRENCH	160901
GENERAL HUMANITIES	240103
GEOGRAPHY	450701
GERMAN	160501
HISTORY	540101
ITALIAN	160902
JURISPRUDENCE	229999
JUSTICE STUDIES	309999
LATIN	161203
LINGUISTICS	160102
MUSIC THERAPY	512305
PHILOSOPHY	380101
POLITICAL SCIENCE	451001
PSYCHOLOGY	420101
RELIGIOUS STUDIES	380201
SOCIOLOGY	451101
SPANISH	160905
TELEVISION AND DIGITAL MEDIA	090701
THEATRE STUDIES	500501
WOMEN'S & GENDER STUDIES	050207
<i>BACHELOR OF FINE ARTS</i>	
ANIMATION AND ILLUSTRATION	500499
DANCE	500301
FILMMAKING	500602
FINE ARTS/STUDIO	500701
GRAPHIC DESIGN	500409

FALL 2013 ACTIVE DEGREE PROGRAMS (cont.)

DEGREE PROGRAMS	CIP CODE*
<i>BACHELOR OF FINE ARTS (CONT.)</i>	
INDUSTRIAL DESIGN	500404
MUSICAL THEATRE	500901
THEATRE	500501
<i>BACHELOR OF MUSIC</i>	
MUSIC	500903
<i>BACHELOR OF SCIENCE</i>	
ACCOUNTING	520301
ATHLETIC TRAINING	510913
BIOCHEMISTRY	260202
BIOLOGY	260101
BUSINESS ADMINISTRATION	520201
CHEMISTRY	400501
COMPUTER SCIENCE	110101
EXERCISE SCIENCE	310505
GEOSCIENCE	400601
HEALTH EDUCATION	131307
INFORMATION TECHNOLOGY	110103
MARINE BIOLOGY & COASTAL SCIENCES	261302
MATHEMATICS	270101
MOLECULAR BIOLOGY	260402
NUTRITION AND FOOD SCIENCE	190501
PHYSICAL EDUCATION	131314
PHYSICS	400801
PUBLIC HEALTH	512201
SCIENCE INFORMATICS	309999
SUSTAINABILITY SCIENCE	303301
<i>MASTER OF ARTS</i>	
APPLIED LINGUISTICS	160102
CHILD ADVOCACY AND POLICY	440701
CLINICAL PSYCHOLOGY	422801
COMMUNICATION SCIENCES & DISORDERS	510201
COUNSELING	131101
EDUCATIONAL LEADERSHIP	130401
ENGLISH	230101
ENVIRONMENTAL STUDIES	030103
EXERCISE SCIENCE & PHYSICAL EDUCATION	131314
FAMILY AND CHILD STUDIES	190101
FINE ARTS	500701
FRENCH	160901
HISTORY	540101
INDUSTRIAL ORGANIZATIONAL PSYCH.	422804

FALL 2013 ACTIVE DEGREE PROGRAMS (cont.)

DEGREE PROGRAMS	CIP CODE*
<i>MASTER OF ARTS (CONT.)</i>	
LAW AND GOVERNANCE	229999
MUSIC	500901
PSYCHOLOGY	420101
PUBLIC & ORGANIZATIONAL RELATIONS	090101
READING	131315
SPANISH	160905
TEACHING MIDDLE GRADES MATHEMATICS	131311
THEATRE	500501
<i>MASTER OF ARTS IN TEACHING</i>	
TEACHING	130101
<i>MASTER OF BUSINESS ADMINISTRATION</i>	
BUSINESS ADMINISTRATION	520201
<i>MASTER OF EDUCATION</i>	
INCLUSIVE EDUCATION	131001
LEARNING DISABILITIES	131011
SPECIAL EDUCATION	131001
<i>MASTER OF FINE ARTS</i>	
STUDIO ART	500702
<i>MASTER OF PUBLIC HEALTH</i>	
PUBLIC HEALTH	512201
<i>MASTER OF SCIENCE</i>	
ACCOUNTING	520301
BIOLOGY	260101
CHEMISTRY	400501
COMPUTER SCIENCE	110101
GEOSCIENCE	400601
MARINE BIOLOGY & COASTAL SCIENCES	261302
MATHEMATICS	270101
MOLECULAR BIOLOGY	260204
NUTRITION AND FOOD SCIENCE	190501
PHARMACEUTICAL BIOCHEMISTRY	260202
STATISTICS	270501
SUSTAINABILITY SCIENCE	303301
<i>DOCTOR OF AUDIOLOGY (Au.D.)</i>	
AUDIOLOGY-CLINICAL	510202
<i>DOCTOR OF EDUCATION (Ed.D.)</i>	
MATHEMATICS EDUCATION	131399
TEACHER EDUCATION & TEACHER DEVELOPMENT	131299

FALL 2013 ACTIVE DEGREE PROGRAMS (cont.)

DEGREE PROGRAMS	CIP CODE*
<i>DOCTOR OF PHILOSOPHY (Ph.D.)</i>	
COUNSELOR EDUCATION	139999
ENVIRONMENTAL MANAGEMENT	030201
FAMILY STUDIES	190701
<i>DOCTOR OF SCIENCE (Sc.D.)</i>	
AUDIOLOGY-RESEARCH	510202

In addition, the following certificates were offered at the undergraduate and/or graduate level:

Accounting, graduate
 Adolescent Advocacy, graduate
 Advanced Counseling, graduate
 American Dietetic Association, graduate
 Artist Diploma, graduate
 Certified Alcohol and Drug Counselor, graduate
 Child Advocacy, graduate and undergraduate
 CISCO, graduate and undergraduate
 Computational Linguistics, graduate
 Conflict Management in the Workplace, graduate
 Criminal Forensic Psychology, graduate
 Developmental Models of Autism Intervention, graduate
 Environmental Forensics, graduate
 Family/Civil Forensic Psychology, graduate
 Food Safety Instructor, graduate
 Geographic Information Science, graduate
 Infant and Early Childhood Mental Health, graduate
 Makeup Artistry, undergraduate
 Molecular Biology, graduate
 Music Therapy, graduate
 New Literacies, Digital Technologies, and Learning, graduate
 Nutrition and Exercise Science, graduate
 Paralegal Studies, graduate
 Performer's Certificate, graduate
 Spanish Translation, undergraduate
 Teaching English to Speakers of Other Languages, graduate
 Teaching Middle Grades Mathematics, graduate
 Teaching Writing, graduate
 Translation and Interpreting in Spanish, graduate
 Water Resource Management, graduate

H. Major Research and Public Service Activities

Montclair State University serves the citizens of New Jersey and its local communities in numerous ways that are described more fully in Appendix 1, “Economic Impact Report 2012-13.” First and foremost, the University prepares New Jersey’s youth for successful careers and socially responsible, professionally rewarding, and personally enriching lives. The University’s faculty and staff serve as a talented, professional resource to both the State and the communities in which they reside, and the University’s facilities and programming, particularly in the arts, provide cultural enrichment to residents across New Jersey.

In regards to research and external funding during the 2013-2014 academic year, faculty members continued to be actively engaged in research, scholarship, and other forms of artistic and creative expression. Montclair State faculty published over 40 books (see Appendix 2) and several hundred articles, book chapters, and reviews; faculty and students together produced exhibitions, concerts, and other performance art.

In FY13, the Office of Research and Sponsored Programs (OSRP) reported 62 award actions, and a total awarded dollar amount of over \$9 million. Agencies making the most awards to MSU faculty and staff included the National Science Foundation (14 awards), the U.S. Department of Education (5 awards), the National Aeronautics Space Agency (4 awards), the National Institutes of Health (2 awards), the U.S. Department of Defense (2 awards), and the U.S. Geological Survey (2 awards).

The University’s Research and Development (R&D) expenditures declined from \$5,123,000 in FY12, to \$4,568,000 in FY13, or a reduction of 11%. An additional \$8.4 million expended on other sponsored programs brought the FY13 total of funded expenditures to over \$12.9 million, up 15% from FY12.

TABLE II.H.1: R&D Expenditures, FY13 [1]

Source of Funds	Amount
U.S. Federal Government	\$3,410,000
State and Local Government	\$73,000
Business and Non-Profit Organizations	\$417,000
Institutional Funds (incl. MSU Foundation)	\$668,000
Grand Total of Academic R&D Expenditures (All Disciplines and Sources)	\$4,568,000

[1] Source: NSF Higher Education Research and Development Survey, FY10 to FY13.

Expenditures on Other Sponsored Programs, FY13	
Source of Funds	Amount
U.S. Federal Government	\$2,202,264
State and Local Government	\$4,960,753
Business and Non-Profit Organizations	\$867,184
Institutional Funds	\$337,708
Total of Expenditures on Sponsored Programs Other Than Research	\$8,367,909
Grand Total of Expenditures on R&D and Other Sponsored Programs	\$12,935,909

Montclair State University has enjoyed great success in recruiting and retaining outstanding faculty. The University's 585 full-time faculty members, and all those who support them in part-time instructional roles, represent the heart and soul of the institution. Without them, none of the excellent outcomes described above could be achieved.

Appendix 2 of this report is a brochure titled "University Authors, 2014," which describes books published by Montclair State University faculty during the past year. The following section of this report augments that brochure by providing more details of faculty activities and accomplishments during the 2013-2014 academic year.

Selected Montclair State University Faculty Accomplishments

SCHOOL OF BUSINESS

Department of Accounting, Law & Taxation

Aquilino, Frank J.

Aquilino, F., Jeffers, A. (2014). Important Aspects of the New Tax Law - Good News & Bad News. *Business Journal for Entrepreneurs*, 2014(2), 1-28.

Chang, Chiaho

Chang, C. (2014). Cost estimates and standard costing systems. *Journal of Academy of Business and Economics*, 14(1), 57-66.

DeGaetano, Larry

Romero, S., Lin, B., Jeffers, A., DeGaetano, L. (2014). An Overview of Sustainability Reporting Practices. *CPA Journal*, 68-71.

Jeffers, A., Lin, B., Romero, S., DeGaetano, L. (2014). Is It Time for Companies to Capitalize on Sustainability? *CPA Journal*, 6-10.

Jeffers, A., DeGaetano, L. (2013). Is There a Relationship between Sustainability (Green) Initiatives and a Company's Value? *International Journal of Data Analysis and Information Systems (IJDAIS)*, 5(2), 105-116.

Romero, S., Lin, B., Jeffers, A., DeGaetano, L. . A Comparison of Sustainability in European and U.S. Corporations. *International Journal of Data Analysis and Information Systems*.

Jeffers, A., DeGaetano, L., Lin, B., Romero, S. (2014). *Sustainable (Green) Initiatives in Corporations* (pp. 2426-2442). Hershey, PA: Encyclopedia of Business Analytics and Optimization.

DiGabriele, James A.

DiGabriele, J., Ojo, M. (2014). Objectivity and Independence: The Dual Roles of External Auditors. *Journal of Forensic & Investigative Accounting*, 6(2), 219-224.

DiGabriele, J. (2014). Perceived Conflicts in Peer Reviewed Accounting Research. *Journal of Accounting, Ethics & Public Policy*, 15(2), 25.

Filler, M. G., DiGabriele, J. (2013). Three Short-term Econometric Sales Forecasting Models. *The Value Examiner*, Sept/Oct, 1-15.

DiGabriele, J. (2013). Academic Research Briefs No. 3. *The Value Examiner*, July/August, 36-38.

DiGabriele, J. (2013). The insignificance of auditor selection in the valuation of private companies within the public acquisition market. *International Journal of Critical Accounting*, 5(3), 275-287.

Jeffers, Agatha E.

Aquilino, F., Jeffers, A. (2014). Important Aspects of the New Tax Law - Good News & Bad News. *Business Journal for Entrepreneurs*, 2014(2), 1-28.

Romero, S., Lin, B., Jeffers, A., DeGaetano, L. (2014). An Overview of Sustainability Reporting Practices. *CPA Journal*, 68-71.

Jeffers, A., Lin, B., Romero, S., DeGaetano, L. (2014). Is It Time for Companies to Capitalize on Sustainability? *CPA Journal*, 6-10.

Jeffers, A., DeGaetano, L. (2013). Is There a Relationship between Sustainability (Green) Initiatives and a Company's Value? *International Journal of Data Analysis and Information Systems (IJDAIS)*, 5(2), 105-116.

Jeffers, A. (2014). Legal and Ethical Issues of Corporate Tax Inversions. *Ethics & Critical Thinking Journal*(9/15/2014).

Jeffers, A. (2014). Corporate Inversions: How Corporations are Using These Practices to Legally Avoid U.S. Taxes. *Insights To A Changing World*(09/2014).

Romero, S., Lin, B., Jeffers, A., DeGaetano, L. . A Comparison of Sustainability in European and U.S. Corporations. *International Journal of Data Analysis and Information Systems*.

Jeffers, A., DeGaetano, L., Lin, B., Romero, S. (2014). *Sustainable (Green) Initiatives in Corporations* (pp. 2426-2442). Hershey, PA: Encyclopedia of Business Analytics and Optimization.

Kleinman, Gary

Kleinman, G., Lin, B., Palmon, D. (2014). Audit Quality: Cross-National Comparison of Regulatory Regimes. *Journal of Accounting, Auditing and Finance*, 29(1), 61-87.

Coville, T., Kleinman, G. (2015). Independent Directors and Dividend Payouts in the Post Sarbanes-Oxley Era. *Advances in Public Interest Accounting*, 18.

- Kleinman, G., Palmon, D., Yoon, K. . The Relationship of Cognitive Effort, Information Acquisition Preferences and Risk to Simulated Auditor-Client Negotiation Outcomes. *Group Decisions and Negotiations*, TBA(TBA), TBA.
- Lawrence, K., Kleinman, G., Lawrence, S. . *A Clustering Analysis of Five-Star Morningstar Ruled Moderate Asset Allocation Funds*. Contemporary Perspectives in Data Mining.
- Lawrence, K. D., Kleinman, G., Lawrence, S. . *Time Series Models to Predict the NAV of an Asset Allocation Mutual Fund VWELX*. Handbook of Financial Econometrics and Statistics.

Lauricella, Leonard J.

- Yang, J., Lauricella, L. (2014). Highlights and Strategies of Recent Tax Legislations - And Strategies to Minimize Tax Owed. *Journal of Taxation of Investments*, 31(3), 21-41, Spring 2014.
- Yang, J., Lauricella, L. (2013). Current Development of the New Tax Law. *Journal of Business Issues*, Issue 2013,(Number 1), 27-36.

Lin, Beixin

- Poon, W., Yang, J., Lin, B. (2014). Determining the Liability of Internet Retailers to Collect Sales Tax. *International Journal of Technology Policy and Law*, 1(4), 387-394, May 2014.
- Romero, S., Lin, B., Jeffers, A., DeGaetano, L. (2014). An Overview of Sustainability Reporting Practices. *CPA Journal*, 68-71.
- Jeffers, A., Lin, B., Romero, S., DeGaetano, L. (2014). Is It Time for Companies to Capitalize on Sustainability? *CPA Journal*, 6-10.
- Shen, Y., Yang, J., Lin, B. (2014). The Current Status of Internet Commerce and Taxation Problems in China. *International Tax Journal, a CCH publication*, 40(2), 17-26.
- Kleinman, G., Lin, B., Palmon, D. (2014). Audit Quality: Cross-National Comparison of Regulatory Regimes. *Journal of Accounting, Auditing and Finance*, 29(1), 61-87.
- Yang, J., Poon, W., Lin, B. (2013). Tax Planning Strategies Under the American Taxpayer Relief Act of 2012. *Practical Tax Strategies*, 91(1), 21 - 31.
- Lin, B. . The Survival of Operational Restructuring Firms. *Insights to a Changing World*.
- Shen, Y., Yang, J., Lin, B. (2014). How Foreign Individuals Are Taxed in China. *International Tax Journal, CCH publication*.
- Romero, S., Lin, B., Jeffers, A., DeGaetano, L. . A Comparison of Sustainability in European and U.S. Corporations. *International Journal of Data Analysis and Information Systems*.
- Jeffers, A., DeGaetano, L., Lin, B., Romero, S. (2014). *Sustainable (Green) Initiatives in Corporations* (pp. 2426-2442). Hershey, PA: Encyclopedia of Business Analytics and Optimization.

Lipari, Joseph

- Lipari, J. . A Closer Look at the Passive Activity Rules and Suggestions for Reform. *TaxPro Quarterly*.
- Lipari, J. (2014). *Tips for Choosing a Tax Preparer*. The Jersey Insider.

Narasimhan, Ramesh

- Narasimhan, R., Chung, S. (2014). Impact of Economic Conditions on Pension Costs: A Comparative Analysis of Changes in Comprehensive Income for Pensions. *Journal of Global Business Development*, 5(1), pp. 74-77.

Poon, Wing W.

Poon, W., Yang, J., Lin, B. (2014). Determining the Liability of Internet Retailers to Collect Sales Tax. *International Journal of Technology Policy and Law*, 1(4), 387-394, May 2014.

Yang, J., Poon, W., Lin, B. (2013). Tax Planning Strategies Under the American Taxpayer Relief Act of 2012. *Practical Tax Strategies*, 91(1), 21 - 31.

Romero, Silvia

Romero, S. Commitment to CSR Measured Through GRI: Factors Affecting the Behavior of Companies. *Journal of Cleaner Production / Elsevier*, DOI: 10.1016/J.JCLEPRO.2014.06.034.

Fernandez-Feijoo, B., Romero, S., Ruiz, S. (2014). Effect of Stakeholders' Pressure on Transparency of Sustainability Reports within the GRI Framework. *Journal of Business Ethics - Springer*, 122(1), 53-63.

Romero, S., Lin, B., Jeffers, A., DeGaetano, L. (2014). An Overview of Sustainability Reporting Practices. *CPA Journal*, 68-71.

Jeffers, A., Lin, B., Romero, S., DeGaetano, L. (2014). Is It Time for Companies to Capitalize on Sustainability? *CPA Journal*, 6-10.

Vasarhelyi, M. A., Romero, S. (2014). Technology in Audit Engagements: a case study. *Managerial Auditing Journal / Emerald*, 29(4).

Alali, F., Romero, S. (2013). Benford's Law: Analyzing a Decade of Financial Data. *Journal of Emerging Technologies in Accounting*, 10, 1-39.

Fernandez-Feijoo, B., Romero, S., Ruiz, S. (2013). Women on Boards: Do they affect sustainability reporting? *Corporate Social Responsibility and Environmental Management*, DOI: 10.1002/csr.1329.

Romero, S., Lin, B., Jeffers, A., DeGaetano, L. . A Comparison of Sustainability in European and U.S. Corporations. *International Journal of Data Analysis and Information Systems*.

Jeffers, A., DeGaetano, L., Lin, B., Romero, S. (2014). *Sustainable (Green) Initiatives in Corporations* (pp. 2426-2442). Hershey, PA: Encyclopedia of Business Analytics and Optimization.

Strauss, Ronald J.

Strauss, R. J. (2014). Transitioning from the Private Sector to Academia. *The CPA Journal*, LXXXIV(8), 12-13.

Strauss, R. J. (2014). Discussant Comment on the Expression of Espoused Humanizing Values in Organizational Practice: A Conceptual Framework and Case Study by Brian Shapiro and Michael Naughton. *Journal of Business Ethics / Springer, Special Issue*.

Strauss, R. J. . Cash-Based Executive Incentive Compensation and Net Earnings - Ethical Analysis. *Journal of Academy of Business and Economics (JABE)*, 14(1).

Strauss, R. J., Santoro, M. A. (2013). "Ethics and Free Markets: Lessons from the Financial Crisis" (vol. July 9, 2013, pp. 1). Shanghai: People's Daily.

Yang, James G.S.

Yang, J. (2014). What Every Victim of a Ponzi Scheme Must Know About Tax Deduction. *Journal of Forensic and Investigative Accounting*, 6(2), pages 260-289, July-December, 2014.

Poon, W., Yang, J., Lin, B. (2014). Determining the Liability of Internet Retailers to Collect Sales Tax. *International Journal of Technology Policy and Law*, 1(4), 387-394, May 2014.

- Yang, J., Lauricella, L. (2014). Highlights and Strategies of Recent Tax Legislations - And Strategies to Minimize Tax Owed. *Journal of Taxation of Investments*, 31(3), 21-41, Spring 2014.
- Shen, Y., Yang, J., Lin, B. (2014). The Current Status of Internet Commerce and Taxation Problems in China. *International Tax Journal, a CCH publication*, 40(2), 17-26.
- Yang, J. (2013). Synchronizing the Concepts of Physical Presence and Economic Nexus Under the Marketplace Fairness Act of 2013. *Journal of Internet Law, CCH Publication, December 2013*, Pages 21-32.
- Yang, J. (2013). The Impact on Foreign Tax Credit of the American Taxpayer Relief Act of 2012. *International Tax Journal, CCH Publication*, 39(6), Pages 21-30, November-December 2013.
- Yang, J. (2013). What Is the Affordable Care Act of 2010? *Taxes - Tax Magazine, a CCH Publication, Volume 91*(Number 12, December 2013), Pages 39-42.
- Yang, J. (2013). The Impacts of the Marketplace Fairness Act of 2013. *Journal of State Taxation*, 32(1), 13-22, November-December 2013.
- Yang, J., Lauricella, L. (2013). Current Development of the New Tax Law. *Journal of Business Issues, Issue 2013*,(Number 1), 27-36.
- Yang, J. (2013). Planning With the American Taxpayer Relief Act of 2012. *TAXPRO Journal, Summer 2013, Volume 20*,(Issue 3), pages 37-43.
- Yang, J., Poon, W., Lin, B. (2013). Tax Planning Strategies Under the American Taxpayer Relief Act of 2012. *Practical Tax Strategies*, 91(1), 21 - 31.
- Yang, J., Shen, Y. (2015). Net Investment Income Tax and Planning Strategies. *Today's CPA*.
- Shen, Y., Yang, J., Lin, B. (2014). How Foreign Individuals Are Taxed in China. *International Tax Journal, CCH publication*.
- Yang, J. (2014). Measuring the Value of the Best Loss Sales Strategy in Equity Investment. *Business Journal of Entrepreneurs*, 9/15/2014.
- Yang, J. (2014). Potentials and Perils of E-Business in China. *International Journal of E-Business Research, an IGI Global Publishing*, 10(4).
- Yang, J. (2013). Problems With Foreign Tax Credit Under the American Taxpayer Relief Act of 2012. *Journal of International Taxation*.

Dean's Office

Rosini, Elizabeth F.

- Zhou, W., Rosini, E. F. (2014). Entrepreneurial Team Diversity and Performance: Toward an Integrated Model. *Entrepreneurship Research Journal*.

Department of Economics & Finance

Atal, Vidya

- Atal, V., Bar, T. (2014). Patent Quality and A Two-Tiered Patent System. *Journal of Industrial Economics*, 62(3), 503-540.
- Atal, V. (2014). The Big Mac Index and Real-Income Disparity. *Journal of Business and Economics Research*, 12(3), 231-236.
- San Vicente Portes, L., Atal, V. (2014). The Big Mac Index: A Shortcut To Inflation And Exchange Rate Dynamics? Price Tracking And Predictive Properties. *International Business and Economics Research Journal*, 13(4), 741-756.
- Atal, V., Dubey, R. S. (2014). Affirmative Action and Empowerment: Friends or Foes? *Economics Bulletin*, 34(2), 1012-1018.

Atal, V., Shankar, K. . Open Source Software: Competition with A Public Good. *Atlantic Economic Journal*.

Dubey, Ram S.

Dubey, R. S., Mitra, T. (2014). On Construction of Equitable Social Welfare Orders on Infinite Utility Streams joint with Tapan Mitra. *Mathematical Social Sciences*, 74, 53--60.

Becker, R. A., Dubey, R. S., Mitra, T. (2014). On Ramsey Equilibrium: Capital Ownership Pattern and Inefficiency. *Economic Theory*, 55(3), 565--600.

Dubey, R. S., Mitra, T. (2014). Combining Monotonicity and Strong Equity: Construction and Representation of Orders on Infinite Utility Streams joint with Tapan Mitra. *Social Choice and Welfare*, 43(3), 591--602.

Atal, V., Dubey, R. S. (2014). Affirmative Action and Empowerment: Friends or Foes? *Economics Bulletin*, 34(2), 1012-1018.

Banerjee, K., Dubey, R. S. (2014). Do all Constructive Strongly Monotone Intertemporal Orders exhibit Impatience? joint with Kuntal Banerjee. *Journal of Mathematical Economics*, 52, 62--69.

Dubey, R. S., Mitra, T. . On Social Welfare Functions on Infinite Utility Streams Satisfying Hammond Equity and Weak Pareto Axioms: A Complete Characterization. *Economic Theory Bulletin*.

Pirouz, Kamrouz

Rezvani, F., Pirouz, K. (2013). Recent Trends in Income Inequality in the United States. *Journal of Business and Educational Leadership*, vol. 4(No. 1).

Pirouz, K., Rezvani, F. . Performance of Iran's Economy: 2004-2012. *Journal of International Business and Economics*.

Pirouz, K. (2013). Nationalization of Oil Industry and Modern Iran: Perspective of Mussadegh in Re-Shaping Economic Development Efforts and Movement to a More Modern Iran. *The American Society for Business & Behavioral Sciences (ASBBS)*, 31 pages.

Ramjerdi, Maria Hamideh

Ramjerdi, H. (2014). Monopoly by Contract: The Practice of Franchised Fee and Royalty Rate. *Journal of Reviews of Global Economics*, Volume 3(1929-7092), 7 -14.

Rawlins, Glenville

Rawlins, G. (2013). Inflation and the Purchasing Power Parity in South Africa. *Journal of Applied Business and Economics*, 15(3), 11.

Rezvani, Farahmand

Rezvani, F., Pirouz, K. (2013). Recent Trends in Income Inequality in the United States. *Journal of Business and Educational Leadership*, vol. 4(No. 1).

Pirouz, K., Rezvani, F. . Performance of Iran's Economy: 2004-2012. *Journal of International Business and Economics*.

San Vicente Portes, Luis

San Vicente Portes, L., Atal, V. (2014). The Big Mac Index: A Shortcut To Inflation And Exchange Rate Dynamics? Price Tracking And Predictive Properties. *International Business and Economics Research Journal*, 13(4), 741-756.

Ozenbas, D., San Vicente Portes, L. (2013). Stock Price Volatility and Firm Capital Structure Decisions During the Financial Crisis. *The Journal of American Academy of Business, Cambridge*.

Ozenbas, D., Meziani, A. Seddik, San Vicente Portes, L. . LIQUIDITY EFFECTS OF FIRM SIZE AND MARKET DISTRESS ON INDEX TRACKING ETFs. *Journal of International Financial Studies*.

Kim, Dong-Kyoon

Kim, D.-K. (2013). Corporate multinational flexibility option and bankruptcy decision. *International Review of Management and Business Review*, 2(4).

Meziani, A. Seddik

Meziani, A. Seddik (2014). Smart Beta ETFs: A Bird's-Eye View of the Market and Analysis of Its Performance Trend. *Institutional Investor Journals*, 5(1), 146-157..

Meziani, A. Seddik . Investing with Environmental, Social and Governance (ESG) Issues in Mind: From the Back to the Fore of. *The Journal of Investing/Institutional Investor Journals*.

Ozenbas, D., Meziani, A. Seddik, San Vicente Portes, L. . LIQUIDITY EFFECTS OF FIRM SIZE AND MARKET DISTRESS ON INDEX TRACKING ETFs. *Journal of International Financial Studies*.

Ozenbas, Deniz

Ozenbas, D., San Vicente Portes, L. (2013). Stock Price Volatility and Firm Capital Structure Decisions During the Financial Crisis. *The Journal of American Academy of Business, Cambridge*.

Ozenbas, D., Meziani, A. Seddik, San Vicente Portes, L. . LIQUIDITY EFFECTS OF FIRM SIZE AND MARKET DISTRESS ON INDEX TRACKING ETFs. *Journal of International Financial Studies*.

Ozenbas, D., Schwartz, R. A. (2014). Trading Rooms: A Bridge to Reality. *BizEd*.

Ricci, Cecilia W.

Ricci, C. (2014). An Analysis of Earnings Manipulation via Inventory in Companies Sanctioned by the SEC. *Journal of Applied Financial Research*, 1, 25-36.

Sintim-Aboagye, Hermann

Sintim, H. (2013). IMF and World Bank Economic Programs on Inflation: Relevance to New Partnership for Africa's Development (NEPAD). *Review of Applied Economics*, 9(1-2), 61-81.

Sohn, Ira

Sohn, I. (2013). Economic and Financial Reform in Costa Rica: Challenges and Opportunities to 2025. *Journal of Applied Business and Economics*, 15(1), 77-93.

Sohn, I. (2014). "Fortune Tellers: The Story of America's First Economic Forecasters (vol. Summer 2014, pp. in press). Foresight (The International Journal of Forecasting),.

Sohn, I. (2014). *The Bet: Paul Ehrlich, Julian Simon, and Our Gamble over Earth's Future*" by Paul Sabin in *Forecasting Perspectives* (vol. Spring 2014, pp. pp. 32-34). Foresight (The International Journal of Forecasting),.

Usmen, Nilufer

Usmen, N., Markowitz, H. (2013). "The Likelihood of Various Return Distributions", Chapter 5 in *Risk-Return Analysis: The Theory and Practice of Rational Investing, Volume I, 2013* (vol. 1, pp. 208). New York, NY: McGraw-Hill Professional Publishers.

Department of Management

Bryan, Nicole M.

Poucki, S., Bryan, N. M. . "Vulnerability to Human Trafficking, Child Labor and Forced Labor among the Roma Community: The role of historical marginalization.". *Journal of Intercultural Studies/Routledge*.

Web-Based Publications

Bain, C., Blair, D., danah, b., Bryan, N. M., Clark, D., Finkelhor, D., Foot, K., Korytova, S., Latonero, M., Leary, M., Malone, P., Mitchell, K., Musto, J., McIntyre, S., Poucki, S., Shavers, A., Thakor, M., Tidball, S., Wolak, J. (2013). "How to Responsibly Create Technological Interventions to Address the Domestic Sex Trafficking of Minors."

Kessler, Stacey

Kessler, S., Spector, P., Gavin, M. (2014). A critical look at ourselves: The role of organizational structure in predicting gender and career outcomes in academia. *Research in Higher Education*, 55, 351-369.

Kessler, S., Bruursema, K., Rodopman, O., Spector, P. (2013). Leadership, interpersonal conflict, and counterproductive work behavior: An examination of the stressor/strain process. *Negotiation and Conflict Management Research*, 16, 180-190.

James, M., Fox, S., Kessler, S., Spector, P. (2013). It's all about me: The role of narcissism in exacerbating the stressor-counterproductive work behavior relationship. *Work & Stress*, 27(4), 368-382.

Mazzola, J., Kessler, S. *Counterproductive work behaviors and their ethical dilemmas: Creating just, respectful, and productive organizations* (pp. 157-179). *The Handbook of Work and Quality of Life: Ethical Practices in Organizations*.

Penney, L. M., Kessler, S. . *Counterproductive Work Behavior: Where We Have Been and Where We Are Going*. Human Frailties: Wrong Choices on the Drive to Success..

Lin, Li-Chun

Wang, J., Chen, Q., Lin, L.-C. (2013). Focusing on Environmental Sustainability for the IT Sector. *International Journal of Business and Public Administration (IJBPA)*, 10(1).

Subramanian, Ramachandran

Subramanian, R. (2014). *Instructor's Manual for Strategic Management, 14e*, Pearce and Robinson, McGraw-Hill. Burr Ridge, Illinois: McGraw-Hill.

Subramanian, R. (2013). *Test Bank for Small Business Management, 11e*, by Scarborough, Pearson Prentice-Hall. New Jersey: Pearson Prentice-Hall.

Zey, Michael

Zey, M. (2014). *Ageless Nation: The Quest For Superlongevity and Physical Perfection*. (pp. 340). New Brunswick, NJ: Transaction Publishers.

Zey, M. (2014). "Longer Lives, Longer Careers" (vol. Dec. 15, 2013). NJ: Newark Star-Ledger.

Zhang, Yanli

Sun, S. L., Zhang, Y. (2013). Corporate Governance and Organizational Survival under Punctuational Change: The Case of China's Burgeoning Banking Industry, 1897-1927. *Nankai Business Review International*, 4(4), 268-289.

Sun, S. L., Zhang, Y., Chen, Z. (2013). CITIC Pacific: Mining for Iron in Australia. *Thunderbird International Business Review*, 55(3), 313-322.

Sun, S. L., Zhang, Y. (2014). Qihoo 360: Building a Free Business Model. *The CASE Journal*, 11(2), forthcoming.

Zhou, Wencang

Zhou, W., Rosini, E. F. (2014). Entrepreneurial Team Diversity and Performance: Toward an Integrated Model. *Entrepreneurship Research Journal*.

Zhou, W. (2014). When does shared leadership matter in entrepreneurial teams: The role of Personality Composition. *International Entrepreneurship and Management Journal*.

- Zhou, W., Vredenburg, D., Rogoff, E. G. (2013). Informational diversity and entrepreneurial team performance: Moderating effect of shared leadership. *International Entrepreneurship and Management Journal*.
- Zhou, W. (2013). Is Informational Diversity Really Informational?: An Investigation of What and When in Entrepreneurial Teams. *Journal of Marketing Development and Competitiveness*, 7(3), 29-42.
- Department of Information & Operations Management
- Berenson, Mark L.**
- Berenson, M. (2013). Using Excel for White's Test – an Important Technique for Evaluating the Equality of Variance Assumption and Model Specification in a Regression Analysis. *DSJIE -- Decision Sciences Journal of Innovative Education*, 11(3), pp. 243-262.
- Chen, Qiyang**
- Xing, R., Wang, J., Chen, Q. A Critical Review of Information Technology Innovations. *IJRCM*, 2(3), 63~68.
- Yao, J., Wang, J., Chen, Q., Xing, R. (2013). Core methodologies in data warehouse design and development. *International Journal of Robotics Applications and Technologies*, 1(1), 57-66.
- Wang, J., Chen, Q., Lin, L.-C. (2013). Focusing on Environmental Sustainability for the IT Sector. *International Journal of Business and Public Administration (IJBPA)*, 10(1).
- Jain, Rashmi**
- VanLeer, M., Jain, R. (2013). A Framework to address the Impact of System of Systems Integration Using Commercially off the Shelf (COTS) Technology. *International Journal of System of Systems Engineering*, 4(1), 23-43.
- Malaga, Ross**
- Malaga, R. . Do Web Privacy Policies Still Matter? *Academy of Information and Management Sciences Journal (AIMSJ)*.
- Misra, Ram B.**
- Ravinder, H., Misra, R. (2014). ABC Analysis for Inventory Management: Bridging the Gap Between Research and Classroom. *American Journal of Business Education*, 7(3), 9.
- Ravinder, H., Misra, R., Su, H. . Quantifying the Risk of Intellectual Property Loss in Analytics Outsourcing. *Information Resources Management Journal / IGI Global*, 28(1), 20. *Conference Proceedings*
- Ravinder, H., Misra, R. (2014). *Bringing Current Research on Multicriteria ABC Analysis to Practice*. Northeast Business and Economics Conference.
- Ravinder, Handanhal**
- Ravinder, H. (2013). Forecasting With Exponential Smoothing – What's The Right Smoothing Constant? *Review of Business Information Systems*, 17(3), 117-126.
- Ravinder, H., Misra, R. (2014). ABC Analysis for Inventory Management: Bridging the Gap Between Research and Classroom. *American Journal of Business Education*, 7(3), 9.
- Ravinder, H., Misra, R., Su, H. . Quantifying the Risk of Intellectual Property Loss in Analytics Outsourcing. *Information Resources Management Journal / IGI Global*, 28(1), 20.
- Wang, John**
- Wang, J., Yao, J., Hsu, J. (2013). An innovation of the 21st century in social networking. *Journal of Management and Engineering Integration*, 5(2), 21-28.
- Wang, J., Yao, J. (2013). : Categorical data analysis using SAS (Third Edition). *International Journal of Data Analysis Techniques and Strategies*, 5(1), 115-117.

Yao, J., Wang, J., Chen, Q., Xing, R. (2013). Core methodologies in data warehouse design and development. *International Journal of Robotics Applications and Technologies*, 1(1), 57-66.

Wang, J., Chen, Q., Lin, L.-C. (2013). Focusing on Environmental Sustainability for the IT Sector. *International Journal of Business and Public Administration (IJBPA)*, 10(1).

Xing, Ruben

Xing, R., Wang, J., Chen, Q. A Critical Review of Information Technology Innovations. *IJRCM*, 2(3), 63~68.

Yao, J., Wang, J., Chen, Q., Xing, R. (2013). Core methodologies in data warehouse design and development. *International Journal of Robotics Applications and Technologies*, 1(1), 57-66.

Zhang, Y., Xing, R., Wang, J. (2013). *A Broken Supply and Social Chain: Anatomy of the Downfall of an Industrial Icon*. Information Systems and Modern Society: Social Change and Global Development.

Yao, James E.

Wang, J., Yao, J., Hsu, J. (2013). An innovation of the 21st century in social networking. *Journal of Management and Engineering Integration*, 5(2), 21-28.

Wang, J., Yao, J. (2013). : Categorical data analysis using SAS (Third Edition). *International Journal of Data Analysis Techniques and Strategies*, 5(1), 115-117.

Yao, J., Wang, J., Chen, Q., Xing, R. (2013). Core methodologies in data warehouse design and development. *International Journal of Robotics Applications and Technologies*, 1(1), 57-66.

Department of Marketing

Jayachandran, C.

Limbu, Y., Jayachandran, C., Babin, B. J. (2014). Does Information and Communication Technology Improve Job Satisfaction? Moderating Role of Sales Technology Orientation. *Industrial Marketing Management*.

Jensen, Ricard W.

Jensen, R. W. . ¿Muy Valiente, o loco? How “Los Suns” Created a Political Controversy That Transcends Basketball. *Studies of Latin American Popular Culture*, 32(1), n/a.

Kay, Mark J.

Kay, M. (2015). *Corporate Sustainability Programs and Reporting: Enhancing Responsibility Commitment and Thought Leadership at Starbucks* (pp. 20). Tilden Press.

Kumar, Archana

Kumar, A., Kim, Y.-K. (2014). The Store-As-A-Brand Strategy: The Effect of Store Environment on Customer Responses. *Journal of Retailing and Consumer Services*, 21(5), 685-695.

Kumar, A., Mukherjee, A., McGinnis, J. (2013). E-Retailing Course: Using an Experiential Approach in a Classroom Setting. *Retail Education Today*, 33(3).

Kumar, A. (2013). Shop While you Talk: Determinants of Purchase Intentions Through a Mobile Device. *International Journal of Mobile Marketing*, 8(1), 23-34.

Beckman, E., Kumar, A., Kim, Y.-K. (2013). The Impact of Brand Experience on Downtown Success. *Journal of Travel Research*, 52(5), 646-658.

Kumar, A., Fairhurst, A., Kim, Y.-K. (2013). The Role of Personal Cultural Orientation in Consumer Ethnocentrism among Indian Consumers. *Journal of Indian Business Research*, 5(4), 235-250.

Kumar, A., Mukherjee, A., McGinnis, J. . Who Wants to be an Etailpreneur? Experiences from an Electronic Retailing Course. *Marketing Education Review*.

Limbu, Yam B.

Limbu, Y., Jayachandran, C., Babin, B. J. (2014). Does Information and Communication Technology Improve Job Satisfaction? Moderating Role of Sales Technology Orientation. *Industrial Marketing Management*.

Asing-Cashman, J. G., Gurung, B., Limbu, Y., Rutledge, D. (2014). Free and Open Source Tools (FOSTs): An Empirical Investigation of Pre-Service Teacher's Competency, Attitude, and Pedagogical Intention. *International Journal of Teaching and Learning in Higher Education*, 26(1).

Mukherjee, A., Limbu, Y. (2013). A Review of Research on Direct-to-Consumer Advertising of Prescription Drugs: Directions for Future Research. *International Journal of Pharmaceutical and Healthcare Marketing*, 7(3), 226-243.

Mukherjee, A., Limbu, Y. (2013). Pharmaceutical Direct-to-Consumer Advertising: Past, Present, and Future. *International Journal of Pharmaceutical and Healthcare Marketing*, 7(3).

Samuels, Jack B.

Samuels, J. (2013). *Summer Trails* (vol. OCT, pp. 1). MAIDSTONE, KENT: PARK WORLD MAGAZINE.

Samuels, J. (2013). *A Compedium of Materials for A Warm Welcome Super Bowl Related Training*. Paramus, NJ: Bergen Community College, School of Continuing Ed..

Wang, Yawei

Wang, Y., Dong, E. (2013). Travel Distance of Senior Tourists: An Application of the GIS Techniques. *Journal of Hospitality and Tourism*, 11(1), 36-42.

COLLEGE OF SCIENCE AND MATHEMATICS

FACULTY PUBLICATIONS:

Adrian-Martinez, S., et al. (The ANTARES, LIGO, and Virgo Collaborations including **M. Favata**). 2013. A first search for coincident gravitational waves and high energy neutrinos using LIGO, Virgo and ANTARES data from 2007. *LIGO-P1200006 Journal of Cosmology and Astroparticle Physics* 06 008 arXiv: 1205-3018.

Alavalapati, J., **Lal, P.**, Susaeta, A., Abt, R.C., and D. Wear, D., 2013. Forest biomass-based energy, in: D. Wear and J. Greis (Eds.) *Southern Forest Futures Project: technical report*, GTR SRS-178, USDA Forest Service, Southern Research Station, Asheville, NC 542p.

Aguilar, F., M. Blazier, J. Alavalapati and **P. Lal**. 2013. An assessment of global wood-based bioprocessing, bioenergy and bio-fuel activities. In R. Vlosky, R. Panwar, and E. Hansen (eds). *Global Forest Products: Trends, Management, and Sustainability*. CRC Press, Taylor and Francis Group.

Archer, E., R.P. Shook, **D. Thomas**, T.S. Church, P.T. Katzmarzyk , R. James, J.R. Hébert, K.L. McIver, G.A. Hand, C.J Lavie and S.N. Blair. 2013. 45-Year trends in women's use of time and household management energy expenditure. *PLOS ONE* 2; 8(2):e56620.

Asai, J., et al. (The LIGO Scientific Collaboration, 660 authors including **M. Favata**). 2013. Enhanced sensitivity of the LIGO gravitational wave detector by using squeezed states of light. *Nature Photonics* doi 10: 1038 nphoton 2013 177.

Asai, J., et. al. (including **M. Favata**); The LIGO and Virgo Collaborations. 2014. Constraints on

Cosmic Strings from the LIGO-Virgo Gravitational-Wave Detectors. *Physical Review Letters* 112: 131101.

Asai, J., et. al. (including **M. Favata**); The LIGO and Virgo Collaborations. 2014. Application of a Hough search for continuous gravitational waves on data from the fifth LIGO science run. *Classical and Quantum Gravity* 31: 085014.

Asai, J., et. al. (including **M. Favata**); The LIGO and Virgo Collaborations. 2014. Gravitational Waves from Known Pulsars: Results from the Initial Detector Era. *The Astrophysical Journal* 785: 119.

Asai, J., et. al. (including **M. Favata**); The LIGO and Virgo Collaborations. 2014. First Searches for Optical Counterparts to Gravitational-wave Candidate Events. *The Astrophysical Journal Supplement* 211: 7.

Asai, J., et. al. (including **M. Favata**); The LIGO and Virgo Collaborations, The NINJA-2 Collaboration. 2014. The NINJA-2 project: Detecting and characterizing gravitational waveforms modelled using numerical binary black hole simulations. *Classical and Quantum Gravity* 31: 115004.

Asai, J., et. al. (including **M. Favata**); The LIGO and Virgo Collaborations. 2013. Search for long-lived gravitational-wave transients coincident with long gamma-ray bursts. *Physical Review D* 88:122004.

Asai, J., et. al. (including **M. Favata**); The LIGO and Virgo Collaborations. 2013. A directed search for continuous Gravitational Waves from the Galactic Center. *Physical Review D* 88:102022.

Asai, J., et. al. (including **M. Favata**); The LIGO and Virgo Collaborations. 2013. Parameter estimation for compact binary coalescence signals with the first generation gravitational wave detector network. *Physical Review D* 88: 062001.

Asai, J., et. al. (including **M. Favata**); The LIGO Scientific Collaboration. 2013. Enhanced sensitivity of the LIGO gravitational wave detector by using squeezed states of light. *Nature Photonics* 7: 613.

Barbooti, M. M., **H. Su**, **P. Punamiya**, and **D. Sarkar**. 2014. Oxytetracycline sorption onto Iraqi montmorillonite. *International Journal of Environmental Science and Technology* 11(1): 69-76.

Bhat, R., Adam, A. T., Lee, J. J., Henry, E. C., Gasiewicz, T. A. and **Rotella, D. P.** 2014. Toward the discovery of drug-like (-)-epigallocatechin gallate analogs as Hsp90 inhibitors. *Bioorg. Med. Chem Lett* 24: 2263-2266.

Bijl, P.K., Bendle, J.A.P., Bohaty, S.M., Pross, J., Schouten, S., Tauxe, L., Stickley, C.E., McKay, R.M., Rohl, U., Olney, M., Sluijs, A., Escutia, C., Brinkhuis, H., Klaus, A., Fehr, A., Williams, T., Carr, S.A., Dunbar, R.B., Gonzalez, J.J., Hayden, T.G., Iwai, M., Jimenez-Espejo, F.J., Katsuki, K., Kong, G.S., Nakai, M., **Passchier, S.**, Pekar, S.F., Riesselman, C., Sakai, T., Shrivastava, P.K., Sugisaki, S., Tuo, S., van de Flierdt, T., Welsh, K. and Yamane, M., 2013. Eocene cooling linked to early flow across the Tasmanian Gateway. *Proceedings of the National Academy of Sciences*, 110, (24), 9645-9650. doi:10.1073/pnas.1220872110.

- Billings, L.** 2013. Succeeding in undergraduate student research: A few helpful hints for advisors. *PRIMUS* 23:9,798-804.
- Billings, L.,** L. Miery Teran Romero, B. Lindley and I. B. Schwartz. 2013. Intervention-based stochastic disease eradication. *PLOS ONE* 8: e70211.
- Billings, L.,** L. Miery Teran Romero, B. Lindley, and I.B. Schwartz. 2013. Intervention-based stochastic disease eradication. *PLOS ONE* 8:e70211.
- Binkley, D., D. Lawrie, **E. Hill**, J. Burge, I. Harris, R. Hebig, O. Keszöcze, K. Reed and J. Slankas. 2013. "Task Driven Software Summarization." *29th IEEE International Conference on Software Maintenance*.
- Binkley, D., D. Lawrie, L. L. Pollock, **E. Hill** and K. V. Shanker. 2013. A dataset for evaluating identifier splitters. *Proceedings of the 10th Working Conference on Mining Software Repositories* 401-404.
- Brachfeld, S.,** Pizon, J., Darley, J., Sagnotti, L., Kuhn, G., Florindo, F., Wilson, G., Ohneiser, C., Monien, D., and Josphe, L., 2013. Magnetic Tracers of Ice Sheet Extent and Sediment Provanance in the ANDRILL AND-1B Drill Core, Ross Sea, Antarctica, *Global and Planetary Change*, 110, 420-433.
- Burow, A. M., Bates, J. E., Furche, F. and **Eshuis, H.** 2013. Analytical first-order molecular properties and forces within the adiabatic connection random phase approximation. *Journal of Chemical Theory and Computation* 10: 180-194.
- Cantatore, A., S.D. Randall, D. Traum and **S.D. Adams.** 2013. Effect of black tea extract on herpes simplex virus-1 infection of cultured cells. *BMC Complementary and Alternative Medicine* 13: 139.
- Caporale, A., P. Punamiya, M. Pigna, A. Violante, and **D. Sarkar,** 2013. Effect of particle size on arsenic sorption in water treatment residuals in the presence of competing ions. *Journal of Hazardous Materials* 18,260C: 644-651.
- Casazza, K., K.R. Fontaine, A. Astrup, L.L. Birch, A.W. Brown, M.M. Bohan Brown, N. Durant, G. Dutton, M.E. Foster, S.B. Heymsfield, K. McIver, T. Mehta, N. Menachemi, P.K. Newby, R. Pate, B.J. Rolls, B. Sen, D.L. Smith, **D.M. Thomas** and D.B. Allison. 2013. Myths, presumptions, and facts about obesity. *New England Journal of Medicine* 368(5): 446-454.
- Chopping, M.** 2014. Remote Sensing in Environmental Management. Chapter 21 in *An Integrated Approach to Environmental Management*. Wiley. In Press.
- Chung, B.J., McDermid, K. and **Vaidya, A.** 2014. On the affordances of the MaxEP principle. *European Physical Journal B: Condensed Matter and Complex Systems* 87(1): 20.
- Cohrs, M., Ernst, W. and **Vaidya, A.** 2013. Potential for energy harvesting from vortex induced oscillations. *International Journal of Ecology and Development* 26(3): 1-9.
- Cook, C. P., T. Van De Flierdt, T. Williams, S.R. Hemming, M. Iwai, M. Kobayashi, F.J. Jimenez-Espejo, C. Escutia, J.J. Gonzalez, B.K. Khim, R.M. McKay, **S. Passchier**, S.M. Bohaty ,C.R. Riesselman, L. Tauxe, S.Sugisaki, A.L.Galindo, M.O. Patterson, F. Sangiorgi, E.L. Pierce, H. Brinkhuis and 21 others. Dynamic behaviour of the East Antarctic Ice Sheet during Pliocene warmth. *Nature Geoscience* doi: 10.1038/ngeo1889.
- Cronin, M. A., G. Rincon, **R. W. Meredith**, M. D. MacNeil, A. Cánovas, and J. F. Medrano. Molecular phylogeny and SNP variation of polar bears (*Ursus maritimus*), brown bears (*U. arctos*) and black bears (*U. americanus*) derived from genome sequences. *Journal of Heredity*. In Press.
- Cutler, J.** and A. J. Radcliffe. 2014. Extremal graphs for homomorphisms II. *Journal of Graph Theory* 76: 42-59.

- Cutler, J.** and A.J. Radcliffe. 2014. The maximum number of complete subgraphs in a graph with given maximum degree. *Journal of Combinatory Theory Series B* 104:60-71.
- Cutler, J.**, A.J. Radcliffe. 2013. Hypergraph independent sets. *Combinatorics, Probability and Computing*. 22: 9-20.
- Das, P., D. Sarkar,** K. C. Makris, **P. Punamiya,** and R. Datta. 2013. Effectiveness of Urea in enhancing the Extractability of 2,4,6 Trinitrotoluene from Chemically Variant Soils *Chemosphere* 93(9): 1811-1817.
- Datta, R., P. Das, S. Smith, **P. Punamiya,** D.M. Ramanathan, R. Reddy, **D. Sarkar.** 2013. Phytoremediation potential of vetiver grass [*Chrysopogon zizanioides* (L.)] for tetracycline. *International Journal of Phytoremediation* 15: 343-351.
- Deng, J., Y. Shao, N. Gao, **Y. Deng,** S. Zhou and X. Hua. 2013. Thermally activated persulfate (TAP) oxidation of antiepileptic drug carbamazepine in water. *Chemical Engineering Journal* 228:15, 765-771.
- Deng, Y., and **Gravesen, C.** 2013. Ferrate Oxidation for Removal of Refractory Organic matters and Ammonia in Landfill Leachate, *World Academy of Science, Engineering & Technology*, 74, 744-745.
- Deng, Y., Engelhardt J., Abdul-Aziz, S., Bataille, T., Cueto, J., De Leon, O., Wright, M.E., Gardinali, P., Narayanan, A., Polar, J., and Tomoyuki, S., 2013. Ambient Iron-Mediated Aeration (IMA) for Water Reuse, *Water Research*, 47, 850-858.
- Dong, D., **Zhang W.,** Ma H., **Feng H.,** Lu H., Dong Y. and Yu L. 2014. A magnetic record of heavy metal pollution in the Yangtze River subaqueous delta. *Science of the Total Environment* 476–477: 368–377.
- Fails, J. A.,** Druin, A., and Guha, M. L. 2014. Interactive Storytelling: Interacting with People, Environment, and Technology. *International Journal of Arts and Technology Inderscience* 7(1).
- Fails, J. A.,** Druin, A., and Guha, M. L. 2013. Methods and Techniques for Involving Children in the Design of New Technology for Children. *Foundations and Trends® in Human-Computer Interaction*. Now Publishers 6(2): 85-166.
- Fails, J.A.,** **Loeschorn, C.,** Herbert, K., **Hill, E.,** **Kordecki, S.,** **Dymko, D.,** **DeStefano, A.,** and **Christian, Z.** 2014. GeoTagger: A Collaborative and Participatory Environmental Inquiry System. *Computer Supported Cooperative Work and Social Computing (CSCW)*. ACM Press.
- Faith, J. and **D.L. Yu.** 2014. Spatial Distribution of Greenhouse Commercial Horticulture in Kenya and the Role of Demographic, Infrastructure and Topo-Edaphic Factors. *ISPRS International Journal of Geo-Information* 3: 274 – 296.
- Faith, J., **D.L. Yu.** 2014. Spatial Distribution of Greenhouse Commercial Horticulture in Kenya and the Role of Demographic, Infrastructure and Topo-Edaphic Factors. *ISPRS International Journal of Geo-Information* 3: 274 – 296.
- Favata, M.** 2014. Systematic Parameter Errors in Inspirling Neutron Star Binaries. *Physical Review Letters* 112: 101101.
- Feldman, A. (PI) and **Peng, J.** 2013-2015. (Co-PI). AIR: Automatic Idiom Recognition. *National Science Foundation*, \$176,514..
- Feldman, A. and **Peng, J.** 2013. Idioms: Hunting them all out. *14th International Conference on Intelligent Text Processing and Computational Linguistics (Cicling)*. LNCS 7816: 435-446. Springer Heidelberg.
- Feldman, C., **Su, H.,** Mahadevan, M., Brusca, J., Hartwell H. 2014. Menu Psychology to Encourage Healthy Menu Selections at a New Jersey University. *Journal of Culinary Science & Technology* Vol 12(1), pp 1-21.

Feng, H., Qian Y., Gallagher F. J., **Wu M.,** Zhang W., Yu L., Zhu Q., Zhang K., Liu C.-J. and Tappero R. 2013. Lead accumulation and association with Fe on *Typha latifolia* root from an urban brownfield site. *Environmental Science and Pollution Research* 20: 3743–3750.

Feng, H., Qian Y., F.J. Gallagher, **M. Wu,** W. Zhang, L. Yu, Q. Zhu, K. Zhang, C. Liu and R. Tappero. 2012. Lead accumulation and association with Fe on *Typha latifolia* root from an urban brownfield site. *Environmental Science and Pollution Research* 20: 3743-3750.

Feng, H., Yu, D. and Zhang, W., 2008 Coastal Sustainability Study and Environmental Management. In *Urbanization: 21st Century Issues and Challenges*. (ed. Luca N. Wagner). Hauppauge, NY: Nova Science Publishers, Inc. 155-173

Fernandez, Eileen. 2014. Transitions from live to online teaching. *Problems, Resources and Issues in Mathematics Undergraduate Studies* 24(1): 1-11.

Fiordilino, J., Massoudi, M. and **Vaidya, A.** 2014. Pressure driven flow and heat transfer in homogeneous fluids, accepted for publication in. *Applied Mathematics and Computation*.

Fritz, T., G. C. Murphy, E. Murphy-Hill, J. Ou, **E. Hill.** 2014. “Degree-of-Knowledge: Modeling a Developer's Knowledge of Code.” *ACM Transactions on Software Engineering and Methodology (TOSEM)*.

Ghag, G., Ghosh, P., Mauro, A., Rangachari, V. and **Vaidya, A.** 2013. Stability Analysis of 4-species Abeta Aggregation Model: A Novel Approach to Obtaining Physically Meaningful Rate Constants. *Applied Mathematics and Computation* 224(1): 205-215.

Gao, Y., Gao N., **Deng, Y.,** Gu J., Gu, Y., and Zhang, D., 2013. Factors affecting sonolytic degradation of sulfamethazine in water, *Ultrasonics Sonochemistry*, 20 (6), 1401-1407.

Harcelode, M. A., P. Lal and M. E. Miller. 2013. Estimating social impacts of a remediation project life cycle with environmental footprint evaluation tools. *Remediation Journal* 24:1, 5-20.

Hazard, L.C. 2013. *Salvadora hexalepis*: Foraging behavior. *Herpetological Review* 44(2): 334-335.

Hazard, L.C., K.A. Nagy and S. Hillard. Post-release dispersal and predation of head-started juvenile Desert Tortoises (*Gopherus agassizii*): Effect of release site distance on homing behavior. *Herpetological Conservation and Biology*. Invited contribution to special issue: Head-starting in turtles and tortoises.

Healey, M., M.S. Crow and **C.A. Molina.** 2013. Ras-induced Melanoma transformation is associated with the proteasomal degradation of the tumor-suppressor ICER. *Molecular Carcinogenesis* 52: 692-704.

Healey, M., M.S. Crow and **C.A. Molina.** 2013. Ras-induced melanoma transformation is associated with the proteasomal degradation of the tumor-suppressor ICER. *Molecular Carcinogenesis* 52:692-704.

Hegarty, K.G. and **S. Kight.** Do Predator Cues Influence Turn Alternation Behavior in Terrestrial Isopods *Porcellio laevis* Latreille and *Armadillidium vulgare* Latreille? *Behavioural Processes*. In Press.

Herbst, B., **G. Nieddu** G. and **A. D. Trubatch.** 2014. Recurrence in the Korteweg-de Vries equation? *Contemporary Mathematics*. In press.

Hill, E., A. Bacchelli, D. Binkley, B. Dit, D. Lawrie and R. Oliveto. 2013. “Which Feature Location Technique is Better?” *29th IEEE International Conference on Software Maintenance*.

Hill, E., D. Binkley, D. Lawrie, L. Pollock and K. Vijay-Shanker. 2013. “An empirical study of identifier splitting techniques.” *Empirical Software Engineering*.

Hill, E., D. Shepherd, L. Pollock and V. Shanker. 2013. "Differentiating Roles of Program Elements in Action-Oriented Concerns." *29th IEEE International Conference on Software Maintenance*.

Hill, E., Roldan-Vega, M., Fails, J., Mallet, G. 2014. NL-based Query Refinement and Contextualized Code Search Results: A User Study. *IEEE Software Engineering Week Joint Conferences: European Conference on Software Maintenance and Reengineering & Working Conference on Reverse Engineering (CSMR-WCRE)*, IEEE Press.

Hill, E., B. Sisman, A. Kak. 2014. "On the Use of Positional Proximity in IR-based Feature Location." *IEEE Software Engineering Week Joint Conferences: European Conference on Software Maintenance and Reengineering & Working Conference on Reverse Engineering (CSMR-WCRE)*. *IEEE Press*.

Houben, A.J.P., P.K. Bijl, J. Pross, S.M. Bohaty, **S. Passchier**, C.E. Stickley, U. Röhl, S. Sugisaki, T. Tauxe, T. Van De Flierdt, M. Olney, F. Sangiorgi, A. Sluijs, C. Escutia, H. Brinkhuis and the Expedition 318 Scientists. 2013. Reorganization of Southern Ocean plankton ecosystem at the onset of Antarctic glaciation. *Science* 340(6130): 341-344 doi:10.1126/science.1223646.

K.G. Herbert, E. Hill and **N.M. Goodey**. 2013. Mobile interaction and query optimization in a protein ligand data analysis system. *Proceedings of the ACM SIGMOD International Conference on Management of Data* 1291-1292.

Houben, A.J.P., Bijl, P.K., Pross, J., Bohaty, S.M., **Passchier, S.**, Stickley, C.E., Röhl, U., Sugisaki, U.S., Sugisaki, S. Tauxe, T., van de Flierdt, T., Olney, M., Sangiorgi, F., Sluijs, A., Escutia, C., Brinkhuis, H., and the Expedition 318 Scientists, 2013. Reorganization of Southern Ocean plankton ecosystem at the onset of Antarctic glaciation. *Science*, 340, no. 6130, p. 341-344, doi: 10.1126/science.1223646.

Justus, F. and **Yu Du**. 2014. Spatial distribution of greenhouse commercial horticulture in Kenya and the role of demographic, infrastructure and topo-edaphic factors, *ISPRS International Journal of Geo-Information*. In press.

Justino, F., Stordal, F., **Alo, C.A.**, Coppola, E., Setzer, A., Chaves, E., Rodrigues, P., Kucharski, F., and Brumatti, D., 2013. Modeling weather and climate related fire risk in Africa, *American Journal of Climate Change*, accepted.

Kruger, M.A. 2013. Oil pollution in water bodies of restricted circulation. In, M. Salgot, ed. *Stagnant Water Bodies Pollution* 63-80.

Kruger, M.A. Analytical pyrolysis principles and applications to environmental science. In, M. Barbooti, ed., *Environmental Applications of Instrumental Chemical Analysis*. CRC Press.

Krupa, E. E., Webel, C., & McManus, J. In press. Undergraduate Students' Knowledge of Algebra: Evaluating the Impact of Computer-based and Traditional Learning Environments. *Problems, Resources, and Issues in Mathematics Undergraduate Studies*, 24(5), 442-459.

Krumins, J.A., D. van Oevelen, E. van Donk, W.H.G. Hol, W. de Boer, M. Viketoft, G.B. de Deyn, F. Monroy-Martinez, J. Middelburg, T.M. Bezemer, P.C. de Ruiter, J. van Veen, J. van de Koppel, E. The bault and W.H. Van Der Putten . 2013. Soil, fresh water and marine sediment food webs: similarities and differences in their structure and functioning. *BioScience* 63(1): 35-42.

Lal, P. and J. R. R. Alavalapati, 2014. Economics of forest biomass-based energy. *Handbook on Forest Resource Economics*. In S. Kant and J. Alavalapati (eds.) 275-289.

Lal, P., E. Kebede, **B. Wolde**, **P. Burli**, J. Alavalapati, J. Gan and E. Taylor. In press. Assessing Socioeconomic Impacts of Forest Biomass Based Biofuel Development on Rural Communities in the Southern United States. In J. Janick and A. Whipkey (eds.) *Proceedings of the Seventh National New Crops Symposium New Crops: Bioenergy, Biomaterials, and Sustainability*.

Lapeine, M., **K. G. Herbert**, **E. Hill**, **N. M. Goodey**. 2013. "Mobile interaction and query optimization in a protein-ligand data analysis system." *Proceedings of the ACM SIGMOD International Conference on Management of Data*.

Lee, L., **M. Wu**, and T. Chu. 2013. Identification and quantification of *Escherichia coli* and coliforms in Northern New Jersey bodies of water. *Proceedings of the Cross-Strait Conference on Water Resources* D171-178.

Lee, L., **M. Wu**, T. Chu, and **A. Peri**. Accepted. Method evaluations for *Escherichia coli* and coliforms detection in Northern New Jersey Water Bodies. *Submitted to GSTF Journal of Ecology*. In Press.

Lee, L.H., J. Riggio, T.C. Chu. 2013. Biology of Human Life Laboratory Manual. *Hayden-McNeil Publishing* ISBN 13: 978-0-7380-6407-9.

L Li, L., Li, J., Shao, C., Zhang, K., Yu, S., Gao, N., **Deng, Y.**, and Yin, D., 2014. Arsenic removal in synthetic ground water using iron electrolysis, *Separation and Purification Technology*, 122, 225-230.

Li, Y., J. Huang, L. He, Q. Wang, **W. Xiong**, G. Segal, **C. Du** and H.K. Dooner. 2013. A sequence-indexed single gene knockout resource for maize. *Maize Genetics Cooperation Newsletter* 87.

Li, Y., Schrade, J., **Su, H.** Specchio, J. 2014. Transportation of Perishable and Refrigerated Foods in Mylar Foil Bags and Insulated Containers: A Time-Temperature Study, *Journal of Food Protection*. In press.

Li, Y., **Su, H.**, Specchio, J., Schrade, J., Chung, S., and Unanski, M. 2014. Utilization of Steam Heat Generated via Microwave Energy in Seafood Cooking, *Journal of Nutritional Health & Food Engineering*. In press.

Li, Q., Gao, N., **Deng, Y.**, Ma, X., and Chu, W., 2013. Factors affecting UV/H₂O₂ Oxidation of 17 ethynyl estradiol in water, *CLEAN-Soil, Air, Water*, 41(2), 143-147.

Li, A. and Tucci, R. 2013. Zero Divisor Graphs of Upper Triangular Matrix Rings. *Communications in Algebra* 41(12): 4622–4636.

Liu, C., L Wang, **N. M. Goodey**, P. Hanoian and S.J. Benkovic. 2013. Temporally overlapped but uncoupled motions in dihydrofolate reductase catalysis. *Biochemistry* 52(32): 5332–5334.

Ma, X., A. Gurung, and **Y. Deng**. 2013. Phytotoxicity and uptake of nanoscale zero-valent iron (nZVI) by two plant species. *Science of the Total Environment* 443(15): 844–849.

Meisner, A., W.H.G Hol, W. de Boer, **J.A. Krumins**, D.A. Wardle and W.H. Van Der Putten. 2014. Plant soil interactions of invasive – exotic plant species. *Biological Invasions*.

Meredith, R. W., J. Gatesy, and M. S. Springer. 2013. Molecular decay of enamel matrix protein genes in turtles and other edentulous amniotes. *BMC Evolutionary Biology* 13:20. doi: 10.1186/1471-2148-13-20.

- Meredith, R. W.**, J. Gatesy, C. A. Emerling, V. M. York, and M. S. Springer. 2013. Rod monochromacy and the coevolution of cetacean retinal opsins. *PLOS Genet* 9(4): e1003432. doi:10.1371/journal.pgen.1003432
- Micić, V., **M. A. Kruge**, and T. Hofmann. 2013. Variations of common riverine contaminants in reservoir sediments. *Science of the Total Environment* 458-460:90-100.
- Milton, K. and **J. Giacalone**. 2014. Differential Effects of Unusual Climatic Stress on Two Sympatric Primate Species (*Cebus capucinus* and *Alouatta palliata*) on Barro Colorado Island, Panama. *American Journal of Primatology* 76 (3): 249 – 261.
- Ming, Ray, **C. Du**, et al. 2013. Genome of the long-living sacred lotus (*Nelumbo nucifera* Gaertn). *Genome Biology* 14:R41.
- Monsen-Collar, K., L. Hazard** and **P. Dolcemascolo**. 2013. A *Ranavirus*-related mortality event and the first report of *Ranavirus* in New Jersey. *Herpetological Review* 44(2): 263-265.
- Mukherjee, A., Vaidya, A.** and **Yecko, P.** 2013. Stability of shear flow of ferro fluids. *Magneto-hydrodynamics* 49(3/4): 505-511.
- Munakata, M.** and **A. Vaidya**. 2013. Fostering creativity through personalized education. *PRIMUS* 23:9, 764-775.
- Munakata, M.** and **Vaidya, A.** 2013. Undergraduate Research: Fostering creativity through personalized education. *PRIMUS: Problems, Resources, and Issues in Mathematics Undergraduate Studies* 23(9): 64-75.
- Murray, D., **C. Feldman, L.H. Lee** and C. Schuckers. 2013. An exploratory study of food safety and food handling: Examining ready-to-eat foods in independent delicatessen operations. *Advances in Bioscience and Biotechnology, Special Issue: E.coli Theories and Perspectives* 4(4A): 430-436.
- Nagar, R., **D. Sarkar**, K. Makris and R. Datta. 2013. Inorganic arsenic sorption by drinking water treatment residuals amended sandy soil: Effect of soil solution chemistry. *International Journal of Environmental Science and Technology* 10: 1-10.
- Nagar, R., **Sarkar, D.**, Makris, K., and Datta, R., 2014. Bioaccessibility and Speciation of an Organoarsenical in Drinking-water Treatment Residual Amended Soil: A Long Term Greenhouse Study. *J. Hydrol.* (In Press: DOI10.1016/j.jhydrol.2012.10.013).
- Nemani S., and **Li, A.** 2014. Interlace Polynomials of *n*-claw Graphs, *Journal of Combinatorial Mathematics and Computational Computing* 88.
- Nohomovich, B., B.T. Nguyen, M. Quintanilla, **L.H. Lee**, S.R. Murray and T.C. Chu. 2013. Physiological effects of nickel chloride on the freshwater cyanobacterium *Synechococcus* sp. IU 625. *Advances in Bioscience and Biotechnology* 4: 10-14.
- Orejola, N., Passchier, S.**, and IODP Expedition 318 Scientists. 2014. Sedimentology of lower Pliocene to Upper Pleistocene diamictos from IODP Site U1358, Wilkes Land margin, and implications for East Antarctic Ice Sheet dynamics. *Antarctic Science*, doi:10.1017/S0954102013000527.
- Ortiz, J., Nof, D., Polyak, L., St-Onge, G., Lisé-Pronovost, L., Naidu, S., Darby, D., **Brachfeld, S.**, 2013. Late Quaternary flow through the Bering Strait has been forced by Southern Ocean winds, *Journal of Physical Oceanography*, 42(11), 2014-2029.
- Oteng F. M, Alo, C.A.**, and Yidana, S.M., 2014. Groundwater recharge estimates in the Savulugu – Nanton parts of the White Volta Basin, Northern Ghana, *The Scientific World Journal*, accepted.

Oufiero, C. E., **R. W. Meredith**, K. N. Jugo, P. Tran, M. A. Chappell, M. S. Springer, D. N. Reznick, and T. Garland, Jr. The evolution of the sexually selected sword in *Xiphophorus* does not compromise aerobic locomotor performance. *Evolution*. In Press.

Ou, H., Wei, C., **Deng, Y.**, and Gao, N. 2014. Principal component analysis to assess the efficiency and mechanism for ultraviolet-C/polyaluminum chloride enhanced coagulation of algae-laden water, *Water Science & Technology: Water Supply*, doi:10.2166/ws.2013.225. In press.

Ou, H., Wei, C., **Deng, Y.**, and Gao, N., 2013. Principal Component Analysis to Assess the Composition and Fate of Impurities in a Large River-Embedded Reservoir: Qingcaosha Reservoir, *Environmental Science: Processes & Impacts* (formerly the Journal of Environmental Monitoring), 15(8), 1613-1621.

Ou, H., Wei, C., **Deng, Y.**, Gao, N., Ren, Y., and Hu, Y., 2013. Principal component analysis to assess the efficiency and mechanism for enhanced coagulation of natural algae-laden water using a novel dual coagulant system, *Environmental Science and Pollution Research*, 15(8), 1613-1621.

Ou, H., **Deng, Y.**, and Gao, N., 2013. "Integrated principal component analysis of *Microcystis aeruginosa* DOM and assessment of UV-C pretreatment on cyanobacteria containing water," *CLEAN-Soil, Air, Water*, 41, 1-7.

Owa, C., M.E. Messina, Jr and **R. Halaby**. 2013. Triptolide induces lysosomal-mediated programmed cell death in MCF-7 breast cancer cells. *International Journal of Women's Health* 5: 557-569.

Passchier, S., Falk, C. and Florindo, F., 2013. Orbitally-paced shifts in the particle size of the Antarctic continental shelf in response to ice dynamics during the Miocene Climatic Optimum. *Geosphere*, 9:54-62, doi:10.1130/GES00840.1.

Passchier, S., S.M. Bohaty, F. Jiménez-Espejo, J. Pross, U. Röhl, T. Van De Flierdt, C. Escutia and H. Brinkhuis. 2013. Early Eocene to middle Miocene cooling and aridification of East Antarctica. *Geochemistry, Geophysics, Geosystems* 14(5): 1399-1410 doi:10.1002/ggge.20106.

Pattnaik, N. and **A. DiLorenzo**. 2013. Comparison of World Trade Center dust with zinc acetate and lead oxide combinations to determine damage to human lung cells. *Journal of Toxicology and Environmental Health Sciences* 4: 60-65.

Pierce, E., Williams, T., van der Flierdt, T., Hemming, S., Goldstein, S., **Brachfeld, S.**, 2011. Characterizing the sediment provenance of East Antarctica's weak underbelly: the Aurora and Wilkes sub-glacial basins, *Paleoceanography*, 26, 4, doi:10.1029/2011PA002127

Peng, J., Seetharaman, G., Fan, W., and **Varde, A.** 2013. Exploiting Fisher and Fukunag-Koontz Transforms in Chernoff Dimensionality Reduction. *ACM Transactions on Knowledge Discovery from Data* 8(2):8:1-8:25.

Petrov, E.G., V.O. Leonov, **V. Snitsarev**. 2013. Transient photocurrent in molecular junctions: Singlet switching on and triplet blocking. *Chemical Physics* 1(138): 184709.

Pierce, E., Williams, T., van der Flierdt, T., Hemming, S., Goldstein, S., **Brachfeld, S.**, 2011. Characterizing the sediment provenance of East Antarctica's weak underbelly: the Aurora and Wilkes sub-glacial basins, *Paleoceanography*, 26, 4, doi:10.1029/2011PA002127.

Pizzigoni, F. and Li, A. 2014. Design of Knapsack Cryptosystems using Fibonacci Numbers. *Proceedings of the 2014 International Conference on Computer, Network Security and Communication Engineering*.

Pollock, L.L., D. Binkley, D. Lawrie, **E. Hill**, R. Oliveto, G. Bavota and A. Bacchelli. 2013. 1st international workshop on natural language analysis in software engineering (NaturaLiSE 2013). *Proceedings of the 35th International Conference on Software Engineering* 1537-1538.

Pollux, B. J. A., **R. W. Meredith**, M. S. Springer, and D. N. Reznick. The evolution of the placenta drives a shift in sexual selection in livebearing fish. *Nature*. In Press.

Pope, G.A., D. Chatr Aryamontri, L.Wu, and T. Renner. 2014. Deterioration of stone and mineral materials from the Roman Imperial Villa of the Antonines at ancient Lanuvium. *Proceedings, LAEG 2014: Engineering Geology for Society and Territory* Springer. In press.

Pope, G. A., 2013. Generating sediment. In Pope, Gregory A. (ed.) and Shroder, John (series editor), *Weathering and Soils Geomorphology, Volume 4, Treatise in Geomorphology*. San Diego: Academic Press (Elsevier), p. 284-293.

Pope, G. A., 2013. Overview of weathering and soils geomorphology. In Pope, Gregory A. (ed.) and Shroder, John (series editor), *Weathering and Soils Geomorphology, Volume 4, Treatise in Geomorphology*. San Diego: Academic Press (Elsevier), p. 1-11.

Pope, G. A., 2013. Weathering in the tropics, and related extratropical processes. In Pope, Gregory A. (ed.) and Shroder, John (series editor), *Weathering and Soils Geomorphology, Volume 4, Treatise in Geomorphology*. San Diego: Academic Press (Elsevier), p. 179-196.

Pope, G.A., editor, 2013. *Weathering and Soils Geomorphology. Volume 4, Treatise in Geomorphology*. John Shroder, series editor. San Diego: Academic Press (Elsevier), 324pp.

Punamiya, P., **Sarkar, D.**, Rakshit, S., and Datta, R., 2013. Effectiveness of Al-based drinking water treatment residuals as a novel sorbent for removal of tetracyclines from aqueous medium. *J. Environ. Qual.* 42: 1449-1459.

Punamiya, P. A. 2013. Green remediation of veterinary antibiotics in soil-water systems. *Montclair State University, ProQuest, UMI Dissertations Publishing* 3607612.

Punamiya, P., **D. Sarkar**, S. Rakshit, and R. Datta. 2013. Effectiveness of drinking water treatments residuals as a sorbent to remove tetracycline from aqueous medium. *Journal of Environmental Quality* 42: 1449-1459.

Qian, Y., Gallagher F.J., **Feng H.**, **Wu M.** and Zhu Q. 2014. Vanadium uptake and translocation in dominant plant species on an urban coastal brownfield site. *Science of the Total Environment*, 476–477, 696–704.

Quazi, S., **Sarkar, D.**, and Datta, R., 2013. Human health risk from arsenical pesticide contaminated soils: A long-term greenhouse study. *J. Hazard. Mater.* 262: 1031-1038.

Rakshit, S., **D. Sarkar**, E. Elzinga, P. Punamiya and R. Datta. 2013. Mechanisms of ciprofloxacin removal by nanosized magnetite. *Journal of Hazardous Materials* 246-247,221-226.

Rakshit, S., **D. Sarkar**, E. Elzinga, P. Punamiya, and R. Datta. 2014. Surface Complexation of Oxytetracycline by Magnetite: Effect of Solution Properties. *Vadose Zone Journal* 13(2). doi:10.2136/vzj2013.08.0147.

Rakshit, S., **D. Sarkar**, P. Punamiya, and R. Datta. 2013. Kinetics of Oxytetracycline Sorption on Magnetite. *International Journal of Environmental Science and Technology* 1-9. DOI: 10.1007/s13762-013-0317-x.

Rakshit, S., E. Elzinga, R. Datta and **D. Sarkar**. 2013. Infrared attenuated total reflection Fourier transform infrared study of oxytetracycline sorption on magnetite. *Journal of Environmental Quality* 42(3): 822-827.

Ranjan, A., **P. Lal** and A. Susaeta. In press. Metro rail Delhi Metro Rail Travel Behavior Analysis: Impact of Individual and Trip Behavior. In A.K. Dutt, A.G. Noble, F.G. Costa, S.K. Thakur and H. S. Sharma (eds). *Spatial Diversity and Dynamics in Resources and Urban Development* (Regional Resources - Volume I), Netherlands: Springer.

Reid, J.R., C.M. Morton, P. Garcia-Reid, N.A. Peterson and **D.L. Yu**. 2013. Examining Tobacco Outlet Concentration in New Jersey: Does Income and Ethnicity Matter? *Journal of Ethnicity in Substance Abuse* 12: 197 – 209.

Rijsdijk, K.F., I.C. Kroon, T. Meijer, **S. Passchier**, T.A.G.P. Van Dijk, F.P.M. Bunnik and A.C. Janse. 2013. Reconstructing Quaternary RhineMeuse dynamics in the Southern North Sea: Architecture, seismo lithofacies assemblages and malacological biozonation. *Journal of Quaternary Science* doi: 10.1002/jqs.2627.

Roldan-Vega, M., Mallet, G., **Hill, E.**, and **Fails, J.A.** 2013. A Tool for NL-based Query Refinement and Contextualizing Source Code Search Results. *29th IEEE International Conference on Software Maintenance*.

Rotella, D. P. 2013. The discovery and development of boceprevir. *Exp. Opin. Drug Disc* 8: 1-9.

Sagarika, R., **D. Ophori** and S. Kefauver. 2013. Estimation of actual evaporation using surface energy balance algorithms for land model: A case study in San Joaquin Valley, California. *Journal of Environmental Hydrology* 21:14.

Schlee, S., S. Dietrich, T. Kurcon, **P. Delaney**, **N.M. Goodey** and R. Sterner. 2013. Kinetic mechanism of In dole 3 glycerol phosphate synthase. *Biochemistry* 52: 132-142.

Schoeller, D.A, **D. Thomas**, et al. 2013. Self-report-based estimates of energy intake offer an inadequate basis for scientific conclusions. *American Journal of Clinical Nutrition* 97 (6): 1413-1415.

Shaffer, C.D., **C. Du**, et al. 2014. A Course-Based Research Experience: How Benefits Change with Increased Investment in Instructional Time. *CBE-Life Sciences Education* 13:111-130

Shan, X.-J., Yin, J.-Y., **Yu, D.-L.**, Li, C.-F., Zhao, J.-J., Zhang, G.-F., 2013. Analysis of artificial corner reflector's radar cross section: A physical optics perspective. *Arabian Journal of Geosciences*, 6 (8), 2755-2765.

Sherwood, N. and **M. Wu**. 2013. Habitat preference by wood turtles (*Glyptemys insculpta*). *Bulletin of the New Jersey Academy of Science* 57(1): 5-7.

Shi L., X. Zhu, Y. Su, W.Z. Weng, **H. Feng**, X. Yi, Z. Liu and H. Wan. 2013. Synergetic effect of VOx and TeOx species in mesoporous SiO2 for selective oxidation of propane to acrolein. *Journal of Catalysis* 307: 316–326.

Silva, A.M., D.A. Fields, **D. Thomas** and B.J. Strauss. 2013. Body composition: assessment, regulation, and emerging techniques. *Journal of Obesity* doi: 10.1155/2013/125068.

Snitsarev, V., M. Young, R.M.S. Miller and **D.P. Rotella**. 2013. The spectral properties of Epigallocatechin 3-O-Gallate (EGCG) Fluorescence in different solvents: Dependence on solvent polarity. *PLOS ONE* 8: e79834.

Springer, M. S., **R. W. Meredith**, E. C. Teeling, and W. J. Murphy. 2013. Technical Comment on "The Placental Mammal Ancestor and the Post-K-Pg Radiation of Placentals. *Science* 341: 613.

Stocchi, P.C., Escutia, A.J.P. Houben, B.L.A. Vermeersen, P.K. Bijl, H. Brinkhuis, R.M. DeConto, S. Galeotti, **S. Passchier**, D. Pollard, and IODP Expedition 318 scientists. 2013. Relative sea level rise around East Antarctica during Oligocene glaciation. *Nature Geoscience* doi:10.1038/ngeo1783.

Stollar, V., V. Mensah, **S. Adams** and M. L. Li. 2013. Evolution of Sindbis virus with a low-methionine resistant phenotype is dependent on a pre-existing mutation and on the methionine concentration in the medium. *PLOS ONE* 10.1371: journal.pone.0060504 .

Su, H. 2014. Empirical Likelihood-based Inference for Linear Mixed-Effects Models. *Encyclopedia of Business Analytics and Optimization*. In press.

Susaeta, A., J.C. Chang, D. Carter and **P. Lal**. 2014. Economics of carbon sequestration under fluctuating economic environment, forest management and technological changes: An application to forest stands in the southern United States. *Journal of Forest Economics* 20(1): 47-64.

Susaeta, A., **P. Lal**, J. Alavalapati and D. R. Carter. 2013. Modelling the impacts of bioenergy markets on the forest industry in the Southern United States. *International Journal of Sustainable Energy* DOI: 10.1080/14786451.2013.774003.

Suthiwangcharoen, N., Li, T., **Wu, L.**, Reno H.B., Preston, T., and Q. Wang, 2014. A facile co-assembly process to generate core-shell nanoparticles with functional protein corona. *Biomacromolecules* 15 (3): 948–956.

Tashpolat, N., J.L. Ding and **D.L. Yu**. 2014. Analysis of saline soil dielectric characteristics based on correction of Dobson dielectric model and its response to the radar imagery. *Journal of Arid Land* (In press).

Tan, C., Gao, N., **Deng, Y.**, Rong, W., Zhou, S., and Lu, N., 2013. Degradation of antipyrine by heat activated persulfate, *Separation and Purification Technology*, 109, 122-128.

Tan, C., Gao, N., **Deng, Y.**, Rong, W., Zhou, S., and Lu, N., 2013. Degradation of antipyrine by UV, UV/H₂O₂ and UV/PS, *Journal of Hazardous Materials*, 260, 1008-1016.

Thomas ,D., C. Martin, S. Lettieri, C. Bredlau, K. Kaiser, T. Church, C. Bouchard, S. Heymsfield. 2013. Can a weight loss of one pound a week be achieved with a 3,500 kcal deficit? Commentary on a commonly accepted rule. *International Journal of Obesity* doi: 10.1038/ijo.2013.51.

Thomas, D. 2013. Modelling in clinical nutrition - does it add to patient care? *European Journal of Clinical Nutrition* doi: 10.1038/ejcn.2013.16.

Thomas, D., C. Bredlau, A. Bosity- Westphal, M. Muller, D. Gallagher, W. Shen, Y. Maeda, A. McDougall, C. Peterson, E. Ravussin and S. Heymsfield. 2013. Relationships between body roundness with body fat and visceral adipose tissue emerging from a new geometrical model. *Obesity* doi: 10.1002/oby.20408.

Thomas, D.M., C.K. Martin, S. Lettieri, C. Bredlau, K.Kaiser, T.Church, C. Bouchard and S.B. Heymsfield. 2013. Response to 'Why is the 3500 kcal per pound weight loss rule wrong?' *International Journal of Obesity* doi: 10.1038/ijo.2013.113.

Thomas, D.M., M. Weederemann, B.F. Fuemmeler, C.K. Martin, N.V. Dhurandhar, C. Bredlau, S.B. Heymsfield, E. Ravussin and C. Bouchard. 2013. Dynamic model predicting overweight, obesity, and extreme obesity prevalence trends. *Obesity* doi: 10.1002/oby.20520.

Vaidya, A. 2014. MEP and stable configurations in fluid solid interactions, *Understanding Complex Systems (Book Series): Beyond the Second Law: Entropy Production and Non-Equilibrium Systems* Eds. Dewar R.C., Lineweaver C., Niven R. & Regenerauer-Lieb K., Springer Verlag Chapter 13: 257-276.

Vanderklein, D.W., **Galster, J.C.**, Scherr, R. 2014. The impact of Japanese Knotweed on stream baseflow. *Ecobydrology* 7: 881-886.

Wang, Z., C. B. Schaaf, A. H. Strahler, **M. J. Chopping**, M. O. Roman, Y. Shuai, C. E. Woodcock, D. Y. Hollinger, and D. R. Fitzjarrald. 2013. Evaluation of MODIS albedo product (MCD43A) over grassland, agriculture and forest surface types during dormant and snow-covered periods. *Remote Sensing of Environment* 140: 60-77.

Webel, C., **Krupa, E. E.**, & McManus, J. In press. Representations and Misrepresentations of Fraction Multiplication. *Teaching Children Mathematics*.

Wilson, M. K. and **Li, A.** 2013. Solving Second Order Discrete Sturm-Liouville BVP Using Matrix Pencils. *Springer Proceedings in Mathematics & Statistics* 41(20): 201-214.

Wu, M. 2013. Challenges in managing a river on the urban landscape. *Proceedings of the Cross-Strait Conference on Water Resources* D97-103.

Wu, M. and D. Kalma. 2013. A comparative study of wetland vegetation in the Ausable and Boquet River watersheds. *Northeast Naturalist* 20(2): 229-254.

Wu, M. Potential of *Typha* as plant candidate for sludge treatment wetlands. *GSTF Journal of Ecology*. In Press.

Wu, M., D. Kalma, and C. Treadwell. Differential assessment of designations of wetland status using two delineation methods. *Journal of Environmental Management*. In Press.

Xiong, W., L. He, Y. Li, H.K. Dooner and **C. Du.** 2013. Insertion Mapper: A pipeline tool for the identification of targeted sequences from multidimensional high throughput sequencing data. *BMC Genomics* 14: 679.

Xiong, W., L. He, Y. Li, H.K. Dooner and **C. Du.** 2013. Insertion Mapper: A Pipeline Tool for the Identification of Targeted Sequences from Multidimensional High Throughput Sequencing Data. *BMC Genomics* 14:679

Xiong, W., L. He, Y. Li, H.K. Dooner and **C. Du.** 2014. HelitronScanner Uncovers a Large Overlooked Cache of Helitron transposons in many genomes. *Proc Natl Acad Sci USA*. In press.

Xu, J., Gao, N., **Deng, Y.**, and Xia, S., 2013. Nanoscale iron hydroxide-doped granular activated carbon (Fe-GAC) as a sorbent for perchlorate in water, *Chemical Engineering Journal*, 222 (15), 520-526.

Yang, Y., N. Gao, **Y. Deng**, and G. Yu. 2013. Removal of perchlorate in water by calcined MgAl- CO_3 layered double hydroxides. *Water Environment Research* 85:4, 331-339.

Yidana, S. M., **Alo, C.A.**, and **Ophori, D.**, 2014. A preliminary assessment of the hydrogeological properties of sedimentary rock aquifers in Northern Ghana, *Journal of Applied Water Engineering and Research*, accepted.

Yu, D.L. 2014. Understanding regional development mechanisms in Greater Beijing Area, China, 1995–2001, from a spatial–temporal perspective. *GeoJournal* 79: 195 – 207.

Yu, D.L., C.L. Fang, D. Xue and J.Y. Yin. 2014. Assessing Urban Public Safety via Indicator-Based Evaluating Method: A Systemic View of Shanghai. *Social Indicators Research* 117: 89 – 104.

Yu, D.L., C.M. Morton and N.A. Peterson. 2014. Community pharmacies and addictive products: sociodemographic predictors of accessibility from a mixed GWR perspective. *GI Science & Remote Sensing* 51(1): 99 – 113.

Yu, Q., F.J. Gallagher, **H. Feng, M. Wu**, and Q. Zhu. 2014. Vanadium uptake and translocation in dominant plant species on an urban coastal brownfield site. *Science of the Total Environment* 476-477: 696-704.

Zhang, G., C. Li, Q. Li, B. Li, D. M. Larkin, C. Lee, J. F. Storz, A. Antunes, M. J. Greenwold, **R. W. Meredith**, and et al. (93 additional authors). In Press. Comparative genomics reveals insights into avian genome evolution and adaptation. *Science*

Zhou, S., Y. Shao, N. Gao, **Y. Deng**, J. Qiao, H. Ou and J. Deng. 2013. Effects of different algaecides on the photosynthetic capacity, cell integrity and Microcystin LR release of *Microcystis aeruginosa*. *Science of the Total Environment* 463-464: 111-119.

Zhou, C., Gao, N., **Deng, Y.**, Chu, W., Rong, W., and Zhou, S., 2012. Factors affecting ultraviolet irradiation/hydrogen peroxide (UV/H₂O₂) degradation of mixed N-nitrosamines in water, *Journal of Hazardous Materials*, 231-232, 43-48.

Zhou, S., Shao, Y., Gao, N., **Deng, Y.**, Qiao, J., Ou, H., and Deng, J., 2013. Effects of Different Algaecides on the Photosynthetic Capacity, Cell Integrity and Microcystin-LR Release of *Microcystis aeruginosa*, *Science of The Total Environment*, 463-464, 111-119.

Zhou, S., Shao, Y., Gao, N., **Deng, Y.**, Li, L., Deng, J., and Tan, C., in press, Characterization of algal organic matters of *Microcystis aeruginosa*: Biodegradability, DBP Formation and Membrane Fouling Potential, *Water Research*.

COLLEGE OF HUMANITIES AND SOCIAL SCIENCES

Books

Besen-Cassino, Yasemin. 2014. *Consuming Work: Youth Labor in America*. PA: Temple University Press.

Feldman, Anna, Anna Kazantseva, Stan Szpakowicz. Eds. 2014. *Proceedings of the European Association for Computational Linguistics (EACL 2014) 3rd Workshop on Computational Linguistics for Literature (CLfL)*.

Lawler, Peter A. and **Brian Smith.** *A Political Companion to Walker Percy*, University Press of Kentucky, 2013.

Montano, J.J. & **Spitzer, J.B.** (Eds.) 2014. *Adult Audiologic Rehabilitation*. Plural Publishing, San Diego, 2nd edition.

Roholt, Tiger. 2013. *Key Terms in Philosophy of Art*. New York: Bloomsbury Publishing.

Parashar, Sangeeta and **Yong Wang.** 2014. *Divisions and Integration: The Expansion of Global Capitalism*. Dubuque, IA: Kendall Hunt Publishing.

Ruane, Janet and Karen Cerulo. 2014. *Second Thoughts: Sociology Challenges Conventional Wisdom*, 6th edition. Thousand Oaks, CA: Sage.

Other Publications

CHSS faculty have seen publication of at least 92 articles and 46 chapters in AY14, with all departments active, and many departments especially active; for example, in **Modern Languages and Literature**, a department of 8 tenure-line faculty, we see publication of 9 chapters and 5 journal articles. These titles suggest the diversity of scholarship produced by CHSS faculty: “The Global Normative Order: International Individual Rights, States and Justice” (**Gabriel Rubin, Justice**

Studies); “The Monstrous Meal: Flesh Consumption and Resistance in the 19th-Century, European Gothic” (**David DelPrinciple, Spanish and Italian**); “Strength, but not direction, of hand preference is related to height” (**Ruth Propper, Psychology**).

COLLEGE OF EDUCATION AND HUMAN SERVICES

BOOKS PUBLISHED

Lankshear, C., and **Knobel, M.** (Eds.) (2013). *A New Literacies Reader: Educational Perspectives*. New York: Peter Lang.

Levitt, D.H., & Moorhead, H.H. (2013). *Values and Ethics in Counseling: Real-life Ethical Decision Making*. Routledge.

Taylor, M., & Coia, L. (Eds.) (2014). *Gender, Feminism, and Queer Theory in the Self-Study of Teacher Education practices*. Rotterdam, The Netherlands: Sense Publishers.

OTHER PUBLICATIONS

Doamekpor, L. **Amutah, N.** Ramos, L. (2013). Fathers Matter: Paternal Age Influences on Infant Mortality. *American Journal of Men’s Health* DOI: 10.1177/155788313511492.

Mendez, D.D., Almario, D.D., **Amutah, N.,** Dubowitz, T., Fabio, A., Abrams, B., Kim, K., & Bodnar, L.M. (2013). Neighborhood and individual socioeconomic determinants of gestational weight gain: implications for racial disparities. *Journal of Maternal and Child Health*, DOI: 10.1007/s10995-013-1339-1.

Grieb S.M.D., **Amutah, N.,** Smith, H., Hammonds, K., Stowers, J., & Rhodes, S.D. (2013). Preventing HIV through social inclusion using community-based participatory research. In Taket, A., Crisp, B., Goldingay, S., Graham, M., Hanna, L., & Wilson, L. (Eds.). *Practicing Social Inclusion*. Oxford, England, Routledge. 193-204.

Bai, Y., & **Wunderlich, S.** (2013). Lactation accommodation in the workplace and duration of exclusive breastfeeding. *Journal of Midwifery & Women’s Health*, 58 (6), 690-696.

Bai, Y., Wunderlich, S., & Kashdan, R. (2013). Alternative hospital gift bags and breastfeeding exclusivity. *International Scholarly Research Network, ISRN Nutrition*, Volume 2013 (2013), Article ID 560810, 7 pages <http://dx.doi.org/10.5402/2013/560810>.

Bai, Y., Suriano, L., & **Wunderlich, S.** (2013). Veggiecation for the love of vegetables. *Journal of Nutrition Education and Behavior*, 44 (4S), S23-24.

Barnes, N.C. & Urbankowski, D. (2014). Planning, implementing, and assessing an authentic, interdisciplinary task in middle school classrooms. *Middle School Journal, May*, 8-24.

Collins, K., & **Broderick, A.** (2013). When the light turns blue: Journeying into disability studies guided by the work of Ellen Brantlinger. *International Journal of Inclusive Education*, 17(12), pp. 1265-1277.

Lalvani, P., & **Broderick, A.** (2013). Institutionalized ableism and the misguided “Disability Awareness Day”: Transformative pedagogies for teacher education. *Equity & Excellence in Education*, 46(4), pp. 468-483.

Broderick, A. (2013). The tale of a reluctant expert witness. In A. Kanter & B. Ferri (Eds.), *Righting educational wrongs: Disability studies in law and education* (pp. 218-241). Syracuse, NY: Syracuse University Press.

Broderick, A. (2013). I am not of this world, and yet I am in it: A daughter’s/DSE alien’s log of a journey through hell. In P. Smith (Ed.), *Both sides of the table: Autoethnographies of educators learning and teaching with/in [dis]ability* (pp. 119-133). New York: Peter Lang Publishers.

Broderick, A. (2014). “I don’t have a special world for her to live in: She has to adapt to

- this one.”: On becoming a renaissance middle-schooler. In S. Danforth (Ed.) *Becoming a great inclusive educator* (pp. 241-254). New York: Peter Lang.
- Collins, K., & Broderick, A. (2013). When the light turns blue: Journeying into disability studies guided by the work of Ellen Brantlinger. *International Journal of Inclusive Education*, 17(12), pp. 1265-1277.
- Lalvani, P., & Broderick, A. (2013). Institutionalized ableism and the misguided “Disability Awareness Day”: Transformative pedagogies for teacher education. *Equity & Excellence in Education*, 46(4), pp. 468-483.
- Broderick, A. (2013b). The tale of a reluctant expert witness. In A. Kanter & B. Ferri (Eds.), *Righting educational wrongs: Disability studies in law and education* (pp. 218-241). Syracuse, NY: Syracuse University Press.
- Broderick, A. (2013a). I am not of this world, and yet I am in it: A daughter’s/DSE alien’s log of a journey through hell. In P. Smith (Ed.), *Both sides of the table: Autoethnographies of educators learning and teaching with/ in [dis]ability* (pp. 119-133). New York: Peter Lang.
- Bulkley, K.E., & Travers, E. (2013). Variations on a theme: The shift from distinction to commonality in Philadelphia’s Diverse Provider Model 2002-2008. *Journal of School Choice*, 7(4). 532-559.
- Bulkley, K.E. (2013). Conceptions of equity: How influential actors view a contested concept. *Peabody Journal of Education*, 88(1), 10-21.
- Barnes, N.C., Fives, H., & Krause, E.S. (2013). Using a Table of Specifications to improve teacher-constructed traditional tests: An experimental design. *Assessment in Education: Principles, Policy & Practice*, Advance online publication. DOI:10.1080/0969594X.2013.808173.
- Young, M.E., Denny, G., Penhollow, T. M., & Donnelly, J. (2014, January). Religiosity and Unsafe and Distracted Driving Behaviors. *Health Behavior and Policy Review*, Volume 1, Number 1, pp. 58-71(14).
- Borders, L.D., Glosoff, H.L., Welfare, L.E., Hays, D.G., DeKruyf, L., Fernando, D.M., & Page, B. (2014). Best practices in clinical supervision: Evolution of a counseling specialty. *The Clinical Supervisor*, 33, 26-44. doi: 10.1080/07325223.2014.905225
- Frick, M.H., & Glosoff, H.L. (2014). Becoming a supervisor: Qualitative findings on self-efficacy beliefs of doctoral student supervisors-in-training. *The Professional Counselor (IPC)*, 4 (1), 35-48. doi:10.15241/mhr.4.1.35
- Glosoff, H.L. (2014). Multiple relationship issues in private practice. In B. Herlihy and G. Corey, *Boundary Issues in Counseling: Multiple Roles and Responsibilities* (pp. 229-237). Alexandria, VA: American Counseling Association.
- Goldstein, S. E., & Boxer, P. (2013). Parenting practices and the early socialization of relational aggression. *Early Child Development and Care*, 183, 1559-1575.
- Gregory, M. (2013). Επιστημολογικές Εναλλακτικές στην Κοινότητα έρευνας [Epistemological Alternatives in the Community of Inquiry] in Theodoropoulou, E. (Ed.) *Φιλοσοφία, φιλοσοφία, εισαίει; Κάνοντας φιλοσοφία με τα παιδιά [Philosophy, philosophy, are you there? Doing philosophy with children]*. Zefiri, Greece: Diadrassi Publishers, pp. 53-82.
- Jacobson, E. (2013). Review of “Adult Literacy in a New Era: Reflections from the Open Book.” (Dianne Ramdeholl). *Journal of Research and Practice for Adult Literacy, Secondary, and Basic Education*, 2, 2, 109 – 111.
- Juniu, S., Shonfeld, M., & Ganot, A. (2013). Examining Technology Integration in Teacher Preparation Programs. *Actualidades Investigativas en Educación*, 13(3), 1 – 22.
- Kennedy, D. (2013). Preface, *Philosophy Philosophy Are You there? Doing Philosophy with Children*, In Elena K. Theodoropoulou, Ed. (15-23). Athens: Diadrassi.

- Kennedy, D.** (2013). Developing Philosophical Facilitation: A Toolbox of Philosophical ‘Moves’. In *Philosophy in Schools: An Introduction for Philosophers and Teachers*, S. Goering, N. Shudak & T. Wartenberg, Eds. New York: Routledge.
- Kennedy, D.** (2013). Epilogue--Becoming Child, Becoming Other: Childhood as Signifier. In Anja Muller, Ed., *Childhood in the English Renaissance*, 145-153. Trier: Wissenschaftlicher Verlag Trier.
- Knobel, M.** (2013). Foreword. In J. Kalman, I. Guerrero & O. Hernández, *El profe 2.0: La Construcción de Actividades de Aprendizaje con Tecnologías de la Información, la Comunicación y el Diseño*[trans: Teacher 2.0: Constructing learning activities with information, communication and design technologies. Mexico City: Ediciones Somos Maestros.
- Lankshear, C., & **Knobel, M.** (2014). Englishes and digital literacy practices: Social languages in online cultural practices. In B. Street and C. Leung (Eds), *Handbook of English Language Studies* (451-463). London: Routledge.
- Lalvani, P.** (2013). Eye on the prize: Parents, privilege, and the politics of inclusive education. *PowerPlay*, 5 (2).
- Lalvani, P., & Broderick, A.** (2013). Institutionalized ableism and the misguided “disability awareness day:” Transformative pedagogies for teacher education. *Equity and Excellence in Education*, 46 (4), 468-483.
- Larkin, D. B.** (2014). Structures and strategies for science teacher education in the 21st century. *Teacher Education & Practice*, 27(2).
- Lee, S., Davis, B., Khaw, L., & Nittolo, A.** (2014). Diversity education for future family science professionals: Interactive and reflective teaching implications based on Hollinger’s model. *Journal of Family and Environment Research*, 52(2), 111-125.
- Lucas, T., de Oliveira, L., & **Villegas, A.M.** (2014). Preparing linguistically responsive teachers in multilingual contexts. In A. Mahboob & L. Barratt (Eds.), *Englishes in multilingual contexts: Language variation and education* (219-230). London: Springer.
- Lucas, T., & **Villegas, A.M.** (2013). Preparing linguistically responsive teachers: Laying the foundation in preservice teacher education. *Theory Into Practice*, 52(2), 989-109. *Special Issue: Effective practices of professional development for teachers of culturally and linguistically diverse students*, G. Li (Ed.).
- Sung, M., Chin, M, Lee, J., & Lee, S.** (2013). Ethnic variations in factors contributing to the life satisfaction of migrant wives in South Korea. *Family Relations*, 62, 226-240. doi:10.1111/j.1741-3470.2012.00753.x
- Chin, M., Lee, J., **Lee, S.**, Sohn, S., & Sung, M. (2014). Chapter 20: Family policy in South Korea: Development, implementation, and evaluation. In M. Robila (Ed.), *Family policies across the globe* (pp. 305-318). New York: Springer Science & Business.
- Liu, H., **Leigh, S.**, & Yu, B. (2014). Comparison of sequence of trunk and arm motions between short and long official distance groups in javelin throwing. *Sports Biomechanics*, 13(1): 17-32.
- Leigh, S.**, Dapena, J., Gross, M., Myers, J., & Yu, B. (2013). Associations between javelin throwing technique and upper extremity kinetics. In T.Y. Shiang, W.H. Ho, P.C. Huang, & C. L. Tsai (Eds.) *The 31st International Conference on Biomechanics in Sports*, (217). Konstanz, Germany: ISBS.
- Liou, D., Bauer, K., & Bai, Y.** (2013). Investigating attitudes, beliefs, and behaviors related to obesity risk reduction in Chinese Americans. *Perspectives in Public Health*, 11 pages, DOI: 10.1177/1757913913486874, May 21, 2013

- Liou, D., Bauer, K.D., & Bai, Y.** (2013). Investigating obesity risk-reduction behaviours and psychosocial factors in Chinese Americans. *Perspectives in Public Health*, published online May 21, 2013.
- Mahedevan, M., Amutah, N., Ramos, L., Raines, E., King, J., McIntosh, J. & Leverett, C.** (2014). Project THANKS: A Socio-Ecological Framework for an Intervention Involving HIV-Positive African American women with comorbidities. *Journal of Health Disparities Research and Practice*.
- Nesteruk, O.** (2013). Teaching family science students about immigrant families in the U.S.: A course to reflect the diversity of the immigrant population. *Family Science Review*, 18(2), 89-102.
- Lu, Y., Marks, L. D., **Nesteruk, O.**, Goodman, M., & Apavaloaie, L. (2013). Faith, conversion, and challenge: A qualitative study of Chinese immigrant Christian marriages. *Journal of Comparative Family Studies*, 44(2), 227-247.
- Nesteruk, O.** (2013). Intergenerational relationships in transnational Eastern European families. *National Council on Family Relations Report: Global Families*, 58(1), F20-F22.
- Rasmussen, J., Scrabis-Fletcher, K., & Silverman, S.** (2014). Relationships among tasks, time, and student practice in elementary physical education. *The Physical Educator*, 71(1), 156-173.
- Bratton, S. C., Ceballos, P. L., **Sheely-Moore, A. I.**, Meany-Walen, K., Pronchenko, Y., & Jones, L. D. (2013). Head Start early mental health intervention: Effects of child-centered play therapy on disruptive behaviors. *International Journal of Play Therapy*, 22(1), 28-42.
- Li, Y., Su, H., **Specchio, J.J.**, Schrade, J.P., & Unanski, M. (2014) Microwave steamer vs. conventional steamer: utilization in seafood cooking. *Journal of Nutritional Health and Food Engineering*, 1(1):0003.
- Spencer, T.** (2014). The danger of canonizing research within early childhood literacy policies. *Language Arts*, 91 (3), pp. 176-182.
- Spencer, T.** (2014). Preschool for all? Examining the current policy context in light of Genishi's research. *Contemporary Issues in Early Childhood*, 15(2), pp. 176-184.
- St. Ours, E., & Scrabis-Fletcher, K.** (2013). Implementing active homework in secondary physical education. *Strategies*, 26 (6), 23-27
- Taylor, M., Klein, E. J. & Abrams, L.** (2014). Tensions of Re-Imagining Our Roles as Teacher Educators in a Third Space: Revisiting a Co/Autoethnography through a Faculty Lens. *Studying Teacher Education*, 10(1), pp. 3-19.
- Taylor, M., Klein, E. J., & Abrams, L.** (2014). Shape shifting or becoming third space teacher educators? A co/autoethnographic self-study of mentors and faculty. *Studying Teacher Education: A journal of self-study of teacher education practices*.
- Urban, J.B., Hargraves, M., & Trochim, W.M.** (2014). Evolutionary evaluation: Implications for evaluators, researchers, practitioners, funders and the evidence-based program mandate. *Evaluation and Program Planning*, 45, 127-139. <http://dx.doi.org/10.1016/j.evalprogplan.2014.03.011>
- Urban, J.B., Osgood, N., Okamoto, J., Mabry, P., & Lich, K.L.** (2014). Developmental systems science: Extending developmental science with systems science methodologies. In P.C.M. Molenaar, R.M. Lerner, & K.M. Newell (Eds.). *Handbook of Developmental Systems Theory and Methodology*. New York: The Guildford Press.

- van Eeden-Moorefield, B., & Alvarez, A.** (2014, April). The social, legal, and political contexts of queer marriage in the U.S. *Journal of GLBT Family Studies*.
- Wunderlich, S.** (2013). The Importance of Appropriate Nutrition Assessment and Nutrition Education for Older Adults. *Journal of Nutrition Food Science* 3: e121.
- Wunderlich, S.M., Bai, Y., & Chung, S.** (2013). The United States Department of Agriculture policies to improve school food quality while protecting the environment. Wessex Institute of Technology, UK.

COLLEGE OF THE ARTS

CALI SCHOOL OF MUSIC

Elizabeth Brown (Composer-in-Residence) presented a concert in January with Ralph Samuelson (shakuhachi) and Lothar Osterburg (video & models). The performance included *A Bookmobile for Dreamers* for theremin and video.

Heather Buchanan (Professor, Director of Choral Studies) initiated the inaugural Cali Choral Composition Competition. Winning composition *Reflection: Innocent Thoughts on Peace* by **James Conrad Smith** (BMus '14) was premiered by MSU Vocal Accord at Weill Recital Hall - Carnegie Hall in March. Competition judges included Morten Lauridsen, Gerald Custer, Blake Henson, Stephen Leek and Tom Shelton. In April, the MSU Chorale collaborated with the New Jersey Symphony Orchestra under the direction of Maestro Jacques Lacombe. Dr. Buchanan's book chapter "Body Mapping: Enhancing Voice Performance Through Somatic Pedagogy" was published in *Teaching Singing in the 21st Century* by Springer (hard copy & eBook, May 2014).

Robert Butts (Adjunct Professor, Introduction to Music) conducted the premiere performance of Adjunct Professor of Theory/Composition **Amy Reich's** *Suite for Small Orchestra* in concert at NJIT (Newark, NJ). Also on the program was the premiere performance of his one-act opera adaptation of Edgar Allen Poe's *The Cask of Amontillado*. In April, he presented a program *Byron and the Romantic Composer* at the American Byron Conference, Drew University (Madison, NJ) and conducted the premiere performance of his Symphony No. 1 at the College of St. Elizabeth (Madison, NJ). Also this spring, his one-act opera *Mark Twain and the General*, composed in 2013, was given a full production by Eastern Opera Company (Bound Brook, NJ).

Vincent Carr (Adjunct Professor, Organ) became the Associate Organist and Choirmaster for the Cathedral of the Incarnation in Garden City (NY) in January.

Steve Colson (Adjunct Professor, Introduction to Jazz) was mentioned in "Best Jazz Shows in NYC This Month" in the August 2013 *Village Voice*. In December, he was a panelist for the Institute on Ethnicity, Culture, and the Modern Experience (Rutgers), NJPAC and Newark Museum celebrating the 50th anniversary of *Blues People* by Amiri Baraka (NJ Poet Laureate), the first book on Blues/Jazz by an African American. He was interviewed about a festival in 1977 for "Into the Archives with the AACM" (Advancement of Creative Musicians, Columbia U.).

George Curran (Adjunct Professor, Trombone) served as faculty artist of Southeast Trombone Symposium at Columbus State University (GA).

Karen Driscoll (Adjunct Professor, Voice) performed the title role in G F Handel's *Agrippina* with baroque orchestra at the Fabbri Mansion in New York City in January.

Elizabeth Faidley (Adjunct Professor, Violin) taught at multiple camps and gave masterclasses at schools ranging from Chicago to the Luzerne Music Festival in Lake George (NY).

Alan Ferber (Adjunct Professor, Jazz) released a big band recording: Alan Ferber, *March Sublime* (Sunnyside Records), which was been nominated for a 2014 Grammy award in the "Best Large Jazz Ensemble Album" category. He was the recipient of a 2013 Chamber Music America "New Jazz Works" grant, funded by the Doris Duke Foundation and will be writing new music for his chamber

group, Nonet. He toured extensively with Esperanza Spalding's "Radio Music Society" throughout 2013. The tour culminated in a wonderful performance at the North Sea Jazz Festival in Curaçao.

Karen Goodman (Professor, Music Therapy) was selected by the Global Education Center Teaching in English program to teach methodology for higher education at Tianjin University, Tianjin, China during the month of July 2013. She received a career development grant to present "Culture-centered music therapy: Education and Training" at the Conference of the European Music Therapy Confederation (Oslo, Norway, July 2013).

Bassists **David Kingsnorth** (MA '13; Adjunct Faculty, Introduction to Music) and **Bill Moring** (Adjunct Faculty, Jazz) and were mentioned in the *New York Times* article "Suburban Jazz Club Attracts Star Lineups" (Phillip Lutz, April 19, 2014).

Lisa DeLorenzo (Professor, Music Education) presented a professional development workshop for elementary teachers and music teachers, *The Writing Child*, at Montclair State University in January. She coordinated the national conference, "Giving Voice to Democracy in Music Education" (June 2014) at the Cali School, which featured keynote speakers who have authored and presented at national and international venues: Dr. Nicholas Michelli, Dr. David Elliott, and Dr. Paul Woodward. Other presenters from across the United States spoke about a collection of topics on teaching music as democratic practice.

Jeffrey Kunkel (Associate Professor, Jazz Studies) released his first recording as a leader on the Brazilian music label Delira Música in December 2013. Entitled *Meu Coração Brasileiro*, the recording features eleven original compositions by Dr. Kunkel, recorded in Rio de Janeiro in 2011 and 2012. The music demonstrates the composer's affinity and admiration for the unique musical culture of Brazil.

Ken Lam (Associate Professor, Director of Orchestra) continued his role as Education Conductor of the Baltimore Symphony Orchestra and Artistic Director of the Baltimore Symphony Youth Orchestras, conducting Baltimore Symphony Orchestra's education, outreach and family concerts. Prof. Lam conducted six programs at Brevard Music Center (NC) during the summer of 2013, and also guest conducted at the College-Conservatory of Music, University of Cincinnati, the East Connecticut Region Orchestra and with the Charleston Symphony Orchestra (SC).

Thomas McCauley (Associate Professor, Director of Bands) hosted and taught at the 7th annual Weekend Wind Conducting Symposium on the MSU campus in November with guest clinician Professor Craig Kirchoff, Director of Bands and Professor of Conducting at the University of Minnesota. In February, he conducted the MSU Wind Symphony in the opening concert of the New Jersey Music Educators State Conference and also created, organized, and ran three days of concerts, clinics, and reading sessions for the Wind Band Academy portion of the Conference. Dr. McCauley conducted the MSU Symphonic Band in making demonstration recordings for the J.W. Pepper publishing company. In March, he took the MSU Wind Symphony on a tour of the Midwest that included performances in Indianapolis and Chicago. He organized students to take part in a massed-band performance of Berlioz's *Grand Symphony for Winds* for the annual "Make Music New York" in June.

Mary Ann Mumm (Adjunct Faculty, Violin) presented a seminar covering violin solo repertoire for Regional Orchestra auditions for NJ violin teachers for the ASTA/NJ Annual String Symposium; was guest artist for masterclasses at Manhattan School of Music, Princeton University and the Cali School Preparatory Center; offered orchestra/violin sectional coaching for the New Jersey Youth Symphony, Northern NJ Youth Orchestra, NJ All-State Orchestra and NYC Inter-School Orchestra, Hunter College. She served internationally in a summer residency/outreach teaching in the Dominican Republic, Haiti & Jamaica with Youth Orchestras of the Americas/ Global Leaders

Program; with Filarmonica Joven de Colombia summer orchestral residency in Santa Marta Columbia, and taught with Music for Life International in Jordan at Syrian refugee camps.

Darren O'Neill (Assistant Professor, Coordinator of Guitar Studies) hosted and performed in a memorial concert for **Dennis Cinelli** (1953-2012) in Leshowitz Hall in November. Guest artists included Janet Cinelli, Mary Cherney, John LaBarbera, Mark Wade, and Rex Benincasa. The concert featured original works and arrangements by Mr. Cinelli. From 1989-2011, Mr. Cinelli served as Assistant Professor and Coordinator of Guitar Studies in the music department at Montclair State University.

LeAnn Overton (Adjunct Faculty, Voice) lead the Respiro Opera in New York City with an eight-day workshop in June 2014. The workshop focused on breath and body awareness for today's singer.

Margaret (Peg) Zufall Roberts (Adjunct Professor, Strings Technique) organized the ASTA/NJ Shanghai Quartet Festival at the Cali School in January. Members of the Shanghai Quartet and Montclair State University Artists in Residence, **Weigang Li, Yi-Wen Jiang, Honggang Li,** and **Nicholas Tzavaras** coached high school students in performances of Haydn.

Marissa Silverman (Assistant Professor, Music Education) published and presented a great deal during AY 2013–14. Publications in which she was an author include: *Music Matters: A Praxial Philosophy of Music Education* (2nd ed.); "Praxial music education: A critical analysis of critical commentaries" in the *International Journal of Music Education*; "A conception of 'meaningfulness' in/for life and music education" in *Action, Criticism, Theory*. Conference papers include a panel on "Mentoring Minority Faculty" for the College Music Society; "Building a Community for Pre-Service Students of Color" for the National network for Education Renewal; and with **Lisa DeLorenzo** (Professor, Music Education), "Praxial Music Education: Who, What, How?" for the Cooperating Teachers Conference at Ithaca College.

Joseph Smith (Adjunct Professor, Introduction to Music) presented lecture/recitals for New England Piano Teachers' Association, Piano Teachers Forum of New Jersey, Goucher College, and Casa Italiana of New York University, and lectures for New England Conservatory and *Pianophoria!*. Articles in *Clavier Companion*.

George Spitzer (Adjunct Professor, Voice) performed with his chamber group "Melodeon" in New York City. In October, they performed 19th Century Creole Songs of New Orleans at St. Bartholomew's Church. In January, Melodeon performed "Music of the American Jewish Diaspora, Remembrance and Engagement," a recital including songs by Lezar Weiner and George Gershwin, at Christ & St. Stephen's Church. In April they performed "Master's of the Harmonium," songs by Max Reger and selections from "Threepenny Opera" by Kurt Weill at Church of the Epiphany.

Dave Stryker (Adjunct Professor, Jazz) served as Jazz Guitar professor at Jacobs School of Music at Indiana University. His new CD *Eight Track* has been on the *JazzWeek* radio chart for 15 weeks reaching number 3 for 3 weeks. He was featured in an article in *Downbeat Magazine* (June, 2014).

Composer **Joseph Turrin** (Adjunct Faculty, Music in Film) was awarded his eighth NJ State Council on the Arts Fellowship in composition. In April he was in residence at the University of Illinois in Champaign/Urbana. The residency culminated with the premiere of his operetta *Love Games*. The *New York Times* said about the work: "Mr.Turrin's intricate duets, with their echoes of Weill and Sondheim burst forth with unrestrained panache. All this makes *Love Games* far more tonic than most summer diversions and certainly something to see."

David Witten (Professor, Piano) performed with soprano Elena Mindlina in a Five-city tour of Russia to publicize the launch of new CD, *Songs of Nikolai Tcherepnin* (Sept-Oct 2013); organized of round-robin performance of Bach's entire Well-Tempered Klavier, Book 2 (Cali School, Oct.2013);

presented lecture/recital at Tufts University - "Tcherepnin Dynasty of Composers" (March 2014); presented lecture/recitals and masterclasses in Porto Alegre, Brazil on "Unpublished Method Book of Chopin" and "Tcherepnin Dynasty of Composers" (March 2014); performed recital/masterclasses on "Piano Music of the Early Twentieth Century" at University of Wyoming - Laramie and at University of Chicago (April-May 2014); performed at Annual Festival of American Liszt Society - James Madison University (June 2014); performed recital at Dorothy Taubman Piano Festival - Cali School of Music (June 2014).

ART AND DESIGN

Anne Betty Weinshenker is on sabbatical leave during the Spring 2014 semester to work on her next book. She made a presentation on art of the early twentieth century for the Great Horizons program at the Morris Museum in Oct. 2013 and another on Rembrandt in the same place in May 2014. She also provided community service in the form of a series of three lectures on the history of American Art at the Jewish Assisted Living Home in River Vale, NJ. in Feb. and March 2014.

Elizabeth Valdez del Álamo Elizabeth Valdez del Álamo published two articles: "Tarragona, lieu de mémoire" and "La rueda de la tumba de Pedro I como diagrama mnemotécnico". In addition, she presented papers at conferences on "Hearing the Image in the Cloister of Silos", "Courtly Art and Presence at San Vicente of Frías", and gave an in situ presentation of the church within the amphitheatre in Tarragona, Spain, for the British Archaeological Association. Professor del Álamo is a member of the Advisory Board for the Romanesque conferences organized by The BAA, and a member of the editorial board of Studies in Iconography, published by the Index of Christian Art at Princeton University.

Mimi Weinberg (adjunct Professor) has created a *Monument to A.D. Gordon*, a pioneering Zionist (1856-1922), and it will on view at the Sculpture Garden of Yeshiva University in New York from May 12-December 28, 2014.

Kaled Hameide Published a paper co-authored with Dr. Tarek Abdelhamid (NPS) in the *Knowledge Management: An International Journal*, Vol.12, Issue 3,(Fall 2013). Submitted work and virtual presentations to international conferences such as: The Global Business, MIS, Economics and Finance Research Conference, Tokyo (July 2013) and The 13th International Conference on Knowledge, Culture and Change in Organizations. Vancouver, Canada, (June 2013) simultaneously. Hameide serves as Associate Editor to the *International Journal*, Paper Reviewer to *Journal of Brand Management* and *The International Journal of Knowledge and Change Management*, and he is a committee member to the : *European Conference on Social Media,(ECSM)*, *European Conference on Innovation and Entrepreneurship (ECIE)*, & *International Conference on Innovation and Entrepreneurship (ICIE)*. His responsibilities include: referee and paper review as well as run and recommend conference tracks. He is also a book reviewer for **Laurence King Publishing Ltd. – UK.**

Abby Lillethun, together with co-investigator Wendy Gilbert-Simon (PI), Domenica Dominguez, and Prof. Yahui Olenok. Kakehashi Project: Student Creators. Awarded grant for an all-expenses paid 10-day art and design study trip for 12 students and Dr. Lillethun to Tokyo and Kanagawa, Japan in June 2014. Dr. Lillethun has two encyclopedia entries currently in press: "Bricolage," in *The Encyclopedia of Ethnic Clothing in the United States*. Lanham, MD: AltaMira Press; and with Welters, Linda, "History of Dress and Fashion," in *Berg Encyclopedia of Fashion*, Berg Fashion Library, <http://www.bergfashionlibrary.com/>. Other activities include conference presentations: "The Photograph and the Fashionable African Male" at the *Second International Non-western Fashion Conference. London College of Fashion, UK*; and with Welters, Linda, Linda Arthur Bradley, Seunghye

Cho, and Joanne B. Eicher, “A History of World Dress: Part 3” at the International Textiles and Apparel Association. Dr. Lillethun’s speaking engagements included “Celebrating the 1980s: Arnold Scassi,” in the Lecture Series Celebrating 100 Years of the Morris County Museum, Morris Museum, Morristown, NJ, and “The Photograph and the Fashionable African Male” for the Art Lecture Series, Miami University. Dr. Lillethun served as a consultant to the Department of Art, Miami University concerning development of new fashion BFA. Other off campus service includes work for the Costume Society of America, including membership on the National Board of Directors, Vice President, Mid-Atlantic Region, Member 2014 Annual Symposium Planning Committee, Co-chair of onsite registration, and Editor, 2014 CSA Symposium Abstracts. She also served as Adjudicator, Research Abstracts for the 2014 Annual Meeting of the International Textile and Apparel Association and is a Member of the Editorial Board for the *Journal of Fashion, Style, and Popular Culture*. Dr. Lillethun provided comments to *New Scientist Magazine* (quoted in *The Washington Post*) on the discovery of the oldest known trousers in Yanghui, China.

Lauren Carr published two articles with the Society of Animation Studies, started her scholarship in 3D hair and fur simulation and accepted a position on the Women In Animation Comity.

For the fourth time in the past ten years, *Best of American Illustration*, the largest and most prestigious institution in the country recognizing American illustrators, awarded **Scott Gordley** one of the best of American illustrations of 2014 for his piece "Afternoon Retreat." The art is published in their annual awards book, *Best of American Illustration 33* and includes the year's best art award winners—384 pieces were selected out of almost 10,000 illustrations reviewed worldwide. Gordley also Participated in a group exhibition *Fenders & Flashbulbs*, JCO Gallery, Los Gatos, CA

Klaus Schnitzer published images and words in Bimmer Magazine, including “Peter Nettesheim Collection “; “Evolution of an E36/M3”; “Drivers Dream”; “Grand Coupe”; “More than an M5”; “Coupe de Grace.” He also co-authored words and images for “Grand Touring” Roundel Magazine.

Owen Oertling participated in the Greater Newark Mini Maker Faire. He was part of a successful 'Kickstarter campaign that made over \$300,000.00, to produce an action-figure, and had a show at 'TT underground' this winter, showcasing all of the different lines of toys produced by 'Four Horsemen Studios,' the company he works on.

Nancy Goldring, participated in the number of exhibitions, including *Night Tide*, **Diet Gallery**, curated by Jarrett Earnest, Miami, May-July 2014; *Maravee Anima*, Castello Susans, Sabrina Zannier, curator, Udine Italy, Oct –Dec 2013; *Come Together*, Sponsored by the *Brooklyn Rail*, Oct-Dec 2013; *Heat, Chaos, Resistance*, Radiator Gallery, LI City, Oct-Nov 2013; *Photographs and Photobooks*, Freemans, Philadelphia, Sept 2013. Goldring also gave a number of public lectures: Department of Architecture (Politecnico di Milano), Oct. 2014; Bruce High Quality Foundation University, “Specific Objects” series, for a collection to be published Fall 2014. She was a panelist at New York Institute of Technology’s event “Metabolism of the City.” Her publications include various reviews for the *Architect’s Newspaper*, East Coast edition; *Hedgehog Review*, publications of 2 works, Univ. of Va.; *Raritan*, 2012-2013 all issues introduced by Nancy Goldring; Collaborative essay with Michael Taussig (Prof. Anthropology, Columbia University) in *Occupy: 3 Inquiries into Disobedience*, Chicago University Press, April 2013. Photographs by Nancy Goldring. Among the many reviews and articles about her work are: *Nancy Goldring a Meravee: La Spiritualita’ Salva gli Artisti*, Messaggero Veneto, Oct.19, 2013; ArtInfo.com: "New Show of Hurricane Sandy-Inspired Art Was Made Possible by the NYFA's Relief Fund," 2_ 6, 2013 <http://blogs.artinfo.com/artintheair/2013/02/06/new-show-of-hurricane-sandy-inspired-art-was-made-possible-by-the-nyfas-relief-fund/>; Associated Press: "Exhibitions plumb artistic responses to

disaster" by Ula Ilnytzky, February 5, 2013 <http://bigstory.ap.org/article/exhibitions-plumb-artistic-responses-disaster>

Catherine Bebout exhibited her work at *Howard Gardens Gallery*, Cardiff School of Art & Design, Wales, UK. MSU. Curated exhibit of MSU Faculty and MFA student; *Trenton City Museum*, "Paper Works," Trenton, NJ. (Curated by Gabriel Romeu & Elise Mannella); *Milwaukee Institute of Art & Design*, "The Hidden Room in the House," Milwaukee, WI, invitational portfolio exchange exhibition organized by *Kathryn Polk*, University of AZ, Tucson and *Sylvia Taylor*, Ithaca College, NY; *Zayed University*, "Mapping Intersections & Counterpoints" exhibition in Abu Dhabi, UAE, January 2014 (including exhibition catalog, guest lecture and related programming); and City College of San Francisco, CA, "Bridging the Gap," February-March, 2014.

Jae Yong Kim had two solo exhibition this past year: "I Love Donuts"- Hunterdon Art Museum, Clinton NJ; and "Donut Fields" - Kate Shin Gallery at Waterfall Mansion, New York, NY. Selected group exhibitions include "Feel Life"- Kate Shin Gallery at Waterfall Mansion, New York, NY, in which he also participated as co-curator; "Double Mirror"- American University Museum, Washington, DC; "SALON3.2014"- Anthony Brunelli Fine Arts, Binghamton, NY; "Shiseido & Clé de Peau Beauté Art Show" - Kate Shin Gallery at Waterfall Mansion, - New York, NY; "Art Palm Beach"- Anthony Brunelli Fine Arts, Palm Beach, FL; "Houston Fine Art Fair" - Kips Gallery, Houston, TX; "Korean International Art Fair" - Eugene Gallery, Seoul, Korea (also contributed as co-curator); and "Ode to summer"- Kate Shin Gallery at Waterfall Mansion, New York, NY. Kim gave a number of talks, including a visiting artist lecture at Post University, Waterbury, CT. March 2014; Hunterdon Art Museum, Clinton NJ : and Kate Shin Gallery at Waterfall Mansion, New York, NY

Larry Sliker, Adjunct Instructor, has assisted Jim Best-ID, a New Jersey design firm with several packaging and consumer products as well as technical illustration projects in 2014. His firm, Sliker Design is involved with conceptual and piece part development involving hand sketching, computer modeling, photo-realistic illustrations, rapid prototyping models and Adobe Illustrator illustrations. Other recent work includes computer modeling and piece part design for DF-ID, another New Jersey Design firm on a book shelf speaker for Theil Loudspeakers, as well as assisting the design team at BioLite with conceptual design and computer modeling and piece part design for a third world stove

Professor **John Luttrupp** was author of the Instructor's Resources – including Online Resources, Chapter Summaries, Chapter Quizzes and Tests – for the 5th edition of the book "Graphic Design School" by David Dabner, Sandra Stewart and Eric Zempol for Wiley Publishing. He served as a compensated reviewer for the upcoming 2nd edition of "The Production Manual" by Gavin Ambrose and Paul Harris for Fairchild Books AVA. Professor Luttrupp served as a member of the Board of Directors of the Art Directors Club of New Jersey, and on the Education Council for the ADNCJ.

Professor **Martin Greenwald** published a revised edition of his book, "Residential Hot Water and Steam Heating: Gas, Oil and Solid Fuels".

Assistant Professor **Anthony Inciong** served on the Board of Directors for the Art Directors Club of New Jersey and on the Education Council for the ADNCJ. His latest writing appears in the 2013 Typonine typeface specimen entitled Nocturno Type Family. Nikola Djurek, principal of Typonine, is an internationally renowned Croatian typeface designer who published three prior specimens with Professor Inciong: Thema Type Family (2012), Delvard Gradient Type family (2011), and First Typonine Type Specimen (2011). The latter is still available through the University of Amsterdam Library Special Collections (<https://bijzonderecollecties.hex.spoorwms.nl/EN/webshop/nijhof-en-lee/first>

typonine-type-specimen/14016&page=). The bulk of the writing featured on Typonine's website (<http://www.typonine.com>) was also authored by Professor Inciong.

Assistant Professor **Jun Li** was a guest critic for the MFA program at the School of Art, Media and Technology, at the New School in New York City in April of 2014. She was a session contributor and member of the ITP (Interactive Telecommunication Program) summer camp at the Tisch School of Arts, NYU in June of 2014. As a designer, she created the interface of Juniper Edge Interactive Kiosk for Juniper Networks (New York, NY). It was released in Fall 2013. She designed and implemented an animated short "Build Your Future" for Juniper Networks (New York, NY). It was released in March 2014. She designed the interface and logic flow for "Network Threat Alert", an iPhone App; and the interface and logic flow for "Juniper Networks Timeline" (an interactive touch screen video wall); for Juniper Networks Spotlight Security at Juniper Networks ((New York, NY). These will be released in fall of 2014.

Livia Alexander, Adjunct Instructor and Assistant to the Chair, collaborated with Dr. Peter Limbrick at UCSC on presenting *Moroccan Mythologies: The Cinema of Moumen Smibi* at Walker Art Center in Minneapolis and Tate Modern in London in spring 2014. She also co-curated an exhibition, *Customs Made: Quotidian Rituals and Everyday Practices*, at Maraya Arts Center in Sharjah, UAE, in March 2014. Her exhibition catalog essay, co-authored with Nat Muller, was published in Harper Bazaar Middle East.

Professor **Julie Heffernan** had solo exhibitions at the Palo Alto Cultural Center in California, the Crocker Art Museum, Sacramento, CA and PPOW Gallery, New York, NY (Oct. 2013). She also participated in a number of group exhibitions, including H-Space Gallery in Bangkok; Gateway Project, Newark, NJ; "Through the Looking Glass," Friesen Gallery, Ketchum, Idaho; "What Does Love Look Like?" Visual Arts Center of New Jersey, Summit, NJ; "Women Choose Women Again," Reynolda House Museum of American Art, Winston-Salem, NC; "Things Wondrous and Humble, American Still Life," Gallery 151, New York, NY. Articles about her work include "The Figure - Drawing, Painting, and Sculpture - Contemporary Perspectives," Rizzoli; "Nature Morte: Contemporary Artists Reinvigorate the Still Life," by Michael Petry; Thames and Hudson, "Living and Sustaining a Creative Life: Essays by 40 Working Artists," edited by Sharon Loudon; Intellect Books. Professor Heffernan lectured extensively throughout the year, including a one-week summer painting course at Chautauqua Institution, NY; Panel on "Living and Sustaining a Creative Life" with Will Cotton, Sharon Loudon, among others at the Strand Book Store in New York City; Visual Arts Center of New Jersey, Summit, NJ; New York Studio School, New York City; Vermont Studio Center, Johnson, VT; Crocker Art Museum, Sacramento, CA; University of California, Davis; Sacramento State University, Sacramento, CA; Pratt University, Brooklyn, NY; Wake Forest University, Wake Forest, NC; National Academy of Art, NYC – Panel- "Painters on Painting"; New York Academy of Art- New York, NY; Master Class; and Adelphi University, Garden City, NY (Oct. 21)

MFA Visiting Critic **Eleanor Heartney** had artist monographs published on Mira Lehr with Hudson Hills; Mel Chin with Hatje Cantz, and on Santiago Sierra with the Reykjavik Art Museum; co-authored *The Reckoning: Women Artists of the New Millennium*, with Prestel, who also published a second edition of *After the Revolution* (also with Prestel). *The Reckoning* is the 2nd volume of an ongoing series of books on women in contemporary art. *After the Revolution* is the first and Prestel will publish the third next year. She had the paperback and 2nd editions of *Art and Today* published by Phaidon. She also wrote many articles for *Art in America*, and the *Brooklyn Rail*.

Assistant Professor **Andrew Atkinson** exhibited in “Destination Unknown” at MagnanMetz Gallery in Chelsea, New York and in “Sideshow Nation” at Sideshow Gallery in Brooklyn.

Associate Professor and Chair, **Aissa Deebi**, presented a paper about art and social change in post-revolutionary Egypt at a conference at Harvard University titled *Art and Society in the Art World*. Dr. Deebi is also serving as a curatorial advisor for the Vancouver Biennale 2014-6. His video art installation, *The Trial*, first featured at the 2013 Venice Biennale, exhibited at the Beirut Arts Center in June 2014.

SCHOOL OF COMMUNICATION AND MEDIA

Hugh Curnutt published a peer-reviewed article in *Psychoanalysis, Culture & Society*, and had a book chapter accepted for publication in a peer-reviewed edited collection on food and media studies. His expertise in contemporary celebrity and media history lead to an invitation to write an op-ed on selfies for *The Record*. Dr. Curnutt successfully taught both core and elective courses, including introducing *Youth Culture & The Popular*. In addition to these activities, Dr. Curnutt served on a number of committees, participated in school and college events, and performed a range of oversight duties and administrative tasks as area coordinator of communication studies.

Roberta Friedman produced a new touch sensitive video installation about Detroit and installed it with 5 other of her works at the Baryshnikov Art Center in NYC in December. While continuing work on the documentary film “Are We Not Men? A Devo Documentary,” which she has been producing and is directed by Tony Pemberton, she consulted on several other very interesting documentaries in various stages of production & post production. She is also developing a low budget narrative feature film that she will shoot in the near future. Friedman also initiated a collaboration with Neil Baldwin, who directs *The Creative Research Center*, presenting guests at the Film Forum under the rubric of “Cinematic Imagination.” The post screening discussions, where invited filmmakers discussed their original and creative approach to their work, were particularly inspiring to students.

Harry Haines continues his work on a unique memoir project that combines his experience as a gay, anti-war soldier in Viet Nam with a critique of combat films and other interpretations of war. He was instrumental in revising the Introductory course to the School’s curriculum with a new emphasis on linking contemporary industrial and technological developments to historical trends and he taught two new courses in the SCM curriculum, *Communication, Media and Gender* and *Media Criticism*. Haines fulfilled several important service responsibilities, including coaching the Graduating Senior Speaker and CART Graduating Senior Convocation Speaker, and serving as chair of the SCM’s PAC, the By-laws committee, and as Vice Chair on the President’s Commission on Affirmative Action, Equal Opportunity, and Diversity.

Dick Hinchliffe continues to oversee the transition of WMSC Radio from student club to a full-service college radio station. He recruited top talent for the 9-member Student Management Team (SMT) and launched new initiatives in news, public affairs, live music, arts, sports and community service. As a result, WMSC is winning awards and being recognized by peers and professional colleagues as an emerging leader in New Jersey’s college radio community. A key to success is the integration of WMSC into TVDM classrooms, especially his *Radio Production* class where student assignments are designed for broadcast on WMSC. This synergy makes the class an instant newsroom for WMSC, and gives the station a motivated team of writers, reporters and producers during the fall and spring semesters. WMSC continues its mission to serve the students as “the Voice of Montclair State.”

Steve Johnson developed and taught two additional courses, *Modern Journalism* and *Media Tech Toolkit* this year in preparation for the launch of the new B.A. degree in Journalism. Johnson

participated in two conferences on data journalism, taught a workshop on multimedia, and represented the university on a panel to discuss online journalism. He also chaired a School of Communication and Media committee to hire a new professor of Local Journalism. Johnson continues to serve as the faculty advisor to *The Montclarion*, Montclair State's student-run newspaper and web site. He maintains an active blog on current issues in journalism, <http://hudson eclectic.com/>.

Todd Kelshaw presented "Democratizing Campus/Community Partnerships: The Shift from "Service-learning" to "Engagement-Learning" at the annual convention of the *Eastern Communication Association*. At the same conference, he served as respondent to the panel "The Confluence of Communication and Climate in the Workplace" and chaired the panel "Community-based Learning in an Age of Confluence: Issues and Applications." Kelshaw was an active participant in the MSU Community-Based Participant Action Research (CBPAR) Think Tank and followed multiple webinars offered by the Peer Development Network for the Carnegie Community Engagement Classification as an MSU representative.

Larry Londino took advantage of a sabbatical to direct a documentary about Newark Montclair's Urban Residency Teachers program, shooting and directing a series of interviews with key leaders, mentors, and program participants. He also continued his work as part of a Task Force for the USGA's Archive of African American Golf. He transferred some 32 hours of interviews with AA golfers that will eventually be edited and donated to the oral history project at USGA. In collaboration with Steve Fastook's (CNBC) remote production class, Londino guided his Sports Broadcasting class to produce a remote broadcast of the MSU-Stockton State baseball game on April 12. In addition to providing play-by-play and color commentary and crewing, students produced nine one-minute packages that were run between innings featuring profiles of players as well as information about Yogi Berra Stadium and the Museum. Londino also produced and hosted an edition of *Carpe Diem* featuring Dr. Larry Hogan on the publication of his book, *The Forgotten History of African American Baseball*.

Yi Luo published three articles and presented five conference papers at national and international conferences. Dr. Luo's lead-authored article on organizational change management and leadership was published in the *best public relations journal*, *Journal of Public Relations Research*, and represents a seminal work in public relations linking leadership, change, and emotions management. Dr. Luo worked closely with 3 graduate students for their submissions of research work at the Research Symposium at MSU. This was the largest representation from the SCM to date. Dr. Luo also provided strong mentorship to Demitra Calivas for her research paper that was submitted to the NJ Communication Association Conference and won the *top graduate student paper*. Dr. Luo also served as a judge at the annual New York School Public Relations Association Communications Awards. To strengthen the School's M.A. program, Dr. Luo is working with her colleagues to restructure the graduate program.

Steve McCarthy's highlight of the year was the creation and launch of the student content website "WiredJersey.com." This site grew quickly with content produced by students from the News Production course, Sports Journalism courses, WMSC Radio and the "Carpe Diem" public affairs program. Steve brought several students to Austria, Sweden, Jordan and Malawi on reporting and documentary film production trips. In addition, he supervised the taping and editing of many SCM and CART events, many of which ended up on WiredJersey.com. he also assisted Dean Gurskis in bringing production of two pilot episodes of NJTV's "Treasures of New Jersey" to SCM. This could lead to students producing a regularly scheduled program on NJTV.

Christopher McKinley had a most productive year with six articles accepted for publication and five presentations at top national and international conferences. In addition, he launched two new

health communication courses that he had previously designed for the School's health communication concentration. Finally, McKinley retained an active role on numerous SCM, College, and University committees and initiatives, including the IRB, a College of the Arts Partnership with Atlantic Health Systems, and the highly lauded SCM colloquium series.

Karl Nussbaum's work was featured in a number of prominent venues this year. "Sleep" was screened at the Greenpoint Film Festival in September 2013 and his video installation 'Night Blooming Flower' premiered at the Witteveen Art Centre / Gallery in Amsterdam in October 2013, followed by screenings at the Black Maria Film Festival, the Brooklyn Film Festival, and the Internationales Kurzfilm Festival in Hamburg. Nussbaum was awarded an International Artist residency by M4Gastatelier, Amsterdam for the summer of 2014 and has received invitations for "Hilbert Space" to be performed at the Beijing Intermedia Festival and Jüdische Kulturtag in 2015.

Tony Pemberton continues his work as director/writer/executive producer on his feature film, "Buddha's Little Finger," which is an adaptation of Victor Pelevin's Russian best selling novel and is currently in post-production. The film has received 2.1 million euros in funding. Pemberton also continues his work as director/producer on "Are We Not Men? The Devo Documentary 2013" which is the official authorized documentary about the politically misunderstood band DEVO who was the most original voice of the new wave era. The project is in the re-editing stage and will be entered into competition in the 2014 *Sundance Film Festival*. The project has received extensive media coverage. Pemberton also served as a panelist for the 2012-2013 Princess Grace Awards.

Joel Penney had two peer-reviewed journal articles published this year, along with a third article accepted for forthcoming publication. In addition, he presented peer-reviewed papers at both the ICA and NCA conferences. Penney designed and launched a new upper-level undergraduate course in Globalization, Communication, and Media, and advised two of our graduate students in independent studies on political communication and social media marketing and management, respectively. In terms of service, he continued to contribute to the University Graduate Council's research efforts by designing a new survey for MSU graduate students and he chaired the SCM Marketing Committee, launching a new social media outreach project (involving SCM accounts for Facebook, Twitter, and Instagram) as well as the new promotional initiative "The New Jersey High School Media Challenge."

Beverly Peterson was presented with a NJ Senate/Assembly Resolution and a Proclamation from the city of Newark citing the one day conference she co-chaired, "Workplace Bullying: Seeking Solutions" in April, 2014. The event featured labor leaders, legislators, academics, legal representatives for both employers and employees and business consultants. She was also awarded an Honorary Webby for her interactive documentary about workplace bullying, *What Killed Kevin* and the Best Transmedia/Website award from the University Film and Video Association (UFVA). Peterson continued to present the film in various venues and panels including the "The Last Bully" film series sponsored by the Tucson International Jewish Film Festival in conjunction with the Aurora Foundation of Southern Arizona, The Loft Cinema, and the Fund for Civility Respect and Understanding. *What Killed Kevin* is now in full educational distribution and, added to noteworthy press it has already received, was recently featured in two articles in *Psychology Today*.

Patricia Piroh is the Executive Producer for approximately 15 *Carpe Diem* programs, which aired on Comcast and Cablevision. To date, there are over 560 *Carpe Diem* programs, featuring more than 150 faculty, staff and alumni of MSU. Piroh also served as coordinating producer for the series *The Giblin Report*, a series that is produced for Assemblyman Thomas P. Giblin (8 programs recorded during Fall). She is a coordinating producer for *Destination Montclair*, a series produced by the Township of Montclair. Completed projects also include: Completed projects through BMO include: Autism NJ, Feliciano Center for Entrepreneurship, Robert McCormick Tribute Video, Mountainside Hospital, Newark Regional Business Partnership, Nail Media Group, Political Live Stream (Barbara Buono Event), TedEx Event, TheShrinks Pilot, Marijuana Debate, Sparks Summit.

Marc Rosenweig served as moderator and producer of two panels at the Yogi Berra Museum and Learning Center. The fall 2013 panel examined the controversy involving the LGBT community in

sports and the anti-gay ordinance in Russia prior to the Sochi Olympics. The spring 2014 panel focused on Women in Sports Media and explored the early experiences of women working in sports. Rosenweig also produced and hosted special “Carpe Diem” shows with content from all the panels and also conducted interviews with recipients of our Allen B. Du Mont Broadcaster of the Year Award for the Carpe Diem series. In the spring of 2014, as part of the MSU Center for Cooperative Media’s conference on “Innovating the Local News Ecosystem” he moderated a panel on “Embedding Local Journalism: A Case Study”. The panel included two reporters from The Boston Globe, who spent a year embedded in a Boston neighborhood as part of a team that delivered the award-winning multimedia reporting project “68 Blocks.”

David Sanders received recognition this year for his teaching, his work in intellectual property education, and various international production projects. In the fall semester he was named as one of the “hottest seats on campus” in an article by TIME magazine. In the spring, he received an Emmy Award at the 57th Annual New York Emmy® Awards as executive producer of the “Copy Kid” animated PSA that encourages young people to respect the rights of creators. The animation, which won best Community/Public Service Award, is part of an innovative education tool that he developed for primary school students. It is designed to teach respect and admiration for creators, inventors and their works. The project was sponsored through a grant from the National Music Council of the United States and the Music Publishers’ Association. Sanders also continued international collaborations with colleagues Steve McCarthy and Bev Peterson, and a group of nine students, shooting feature pieces in Amman, Jordan and Malawi, Africa in partnership with NGOs Spiritus Mundi and The World Food Program. Some of this work can be found on the WiredJersey.com.

Susan Skoog finished a couple of feature length screenplays, one of which was selected to be workshopped at the Squaw Valley Community of writers, which she also received a grant to attend. In addition to teaching two screenwriting and directing courses this year, she also produced a number of events for MSU with the Montclair Film Festival, the first of which was the Behind the Screen all day symposium in November. The symposium brought a number of well-known film professionals and executives to campus and Skoog oversaw the event’s video production using almost all SCM students as crew. Skoog also organized a very successful networking event for Film alumni with the Montclair Film Festival and coordinated the New Visions from MSU section of the annual festival’s program. The academic year culminated with a 2014 MSU award for Outstanding Education Practices.

Larry Weiner’s work with students and clients (the Metropolitan Opera Guild, the John J. Cali School of Music, and Autism New Jersey) rank as the highlights of the 2013/14 academic year. The Cali partnership and the Autism New Jersey fundraiser fall under the Public Relations Student Society of America umbrella, and they firmly establish our chapter as one of the most active and prestigious in the state. In fact, the Autism NJ fundraiser made the front page of the national PRSSA website. Having the Met Guild as a partner adds a wonderful cachet to the school. Larry’s course in the Public Relations concentration – PR Management – into developed strategic PR plans for three clients: Hindsait, a predictive analysis company; Tooth-Pycks, an online dental product retailer; and Eye Candy, a manufacturer of costume jewelry. Most tellingly, those clients came away from their experience extremely impressed with the students’ work.

THEATER AND DANCE

Randy Mugleston

Lighting Designer Old Lyric Repertory Theatre, Logan UT. *A Funny Thing Happened on the Way to the Forum* and *Musical of Musicals, The Musical*

Debbie Saivetz

Director, *El Dragón Dorado (The Golden Dragon)*. By Roland Schimmelpfennig. Teatro La Llave, Santiago, Chile. May-June, 2014. *Incendios (Scorched)*. By Wajdi Mouawad. Teatro La Llave, Santiago, Chile. January, 2014. [staged reading]. *Severed Moon*. By Alberto Castillo. Trans. Caridad Svich. Mexico/U.S. Playwright Exchange. Lark Play Development Center, New York. December, 2013. Actor, *Exodus: LONEtheater (teatroSOLO)*. Written and directed by Matías Umpierrez (Buenos Aires, Argentina). Underground Zero Festival, New York. July, 2014.

Michael Allen Production Stage Manager for New Jersey Youth Theatre Production of *Oklahoma*.

Erhard Rom, Set Design, *Susanna, Still Will Be Heard, The Scarlet Letter*

Debra Otte Costume Design, *Still Will Be Heard*, Kasser Theatre *Law of Return*, New York premier

Ben Merrick, Production Manager for New Jersey Youth Theatre's production of *Oklahoma*; LED lighting installation for "The Tonight Show" Orlando Set and "The Late Show with Seth Meyers", NBC Studios

Judy Evans Shakespeare Theatre of NJ, Draper: *The Tempest, The Learned Ladies* Summer 2014.

Peter Davis, Prod Manager for Development Production of new musical *SUPER FLY*. Summer 2014; Prepared feasibility studies for: Pulitzer Prize photo exhibit at Columbia University; ACP Producing on MSU Amphitheater

Lisa Krizner-George As of the last academic year, from last September 2013, Krizner-George worked on the new Disney musical, *Aladdin*, in the city. Also designed and built a line of doll clothes for a new doll on the market that was featured at the Toy Fair in Feb. of 2014. After that the most significant project was building the costumes for the Dirty Dancing Tour which opened in D.C. on August 26, 2014. Krizner-George is also the Costume Director for the new opera company in Montclair, The Opera Theater of Montclair, founded and directed by Mia Riker-Norrie.

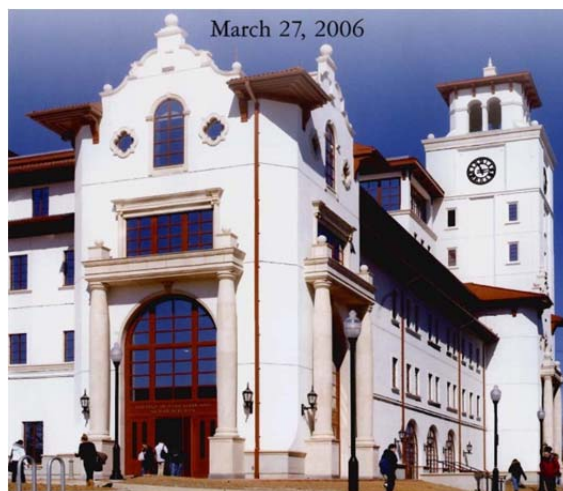
Mary Peterson, Associate Costume Designer, *Lion King* international tours

Jorge Arroyo worked on *Moments Defined, Unspeakable*, NJ PAC Productions *The Wayans Brothers, Gabriel Iglesias, NJN Hispanic Youth, Bill Cosby, The Chieftains and WBGO Jazz*. HERE Arts Center productions include *Sawbones* and *The Diamond Eater*. Finally, at the Luna Stage, *Master Harold and The Boys, Marisol* and *The High Water Mark*.

I. Major Capital Projects

Completed Campus Projects

University Hall, a major new academic building (\$80 million), was officially opened in March 2006. Opened for classes in spring 2006, this 270,000 square foot facility houses the College of Education and Human Services; office and instructional space, including a dean's suite; 125 faculty offices; eight specialized learning labs; six department offices; 28 adjunct faculty work stations; the ADP Center for Teacher Preparation and Learning Technology; the Center of Pedagogy; a Literacy Enrichment Center; and the Institute for the Advancement of Philosophy for Children. Classroom space includes eight 100-seat lecture halls and 29 classrooms with 30 to 40 seats. A Conference Center on the 7th floor of the building, providing panoramic views of the Manhattan skyline, accommodates groups of up to 500 persons. Also, all network operations and the University's data center as well as training classrooms, offices and workstations for the Office of Information Technology are housed in the facility.



In April 2006, Montclair State University hosted the grand opening celebration for **The George Segal Gallery**. Located adjacent to the Alexander Kasser Theater Complex, the 7,200-square-foot Gallery is the only gallery space named for Segal in the world. George Segal's sculpture, *Street Crossing*, was installed on The Alexander Kasser Theater plaza in anticipation of the opening.



Construction of a new 77,000 square foot student recreation center (\$23 million) was completed in March 2008. **The Recreation Center** features a six-lane swimming pool, locker rooms, two-court gymnasium with elevated running track, two racquetball courts, strength and cardio training areas, offices and a snack bar. The new facility is located at the Northern end of the campus between Blanton Hall and the Yogi Berra Museum. Modern state of the art exercise equipment has been installed in the exercise areas which are located on the first and second floor. The second floor treadmills provide the user with a breathtaking view of the New York City skyline



The **John J. Cali School of Music** is an adaptive re-use project that transforms a former dormitory and classroom building into a state-of-the-art teaching, practice and performance facility. Opened for classes in fall 2009, the School of Music creates a new “gateway” building for the campus.

Built in 1928 in the Spanish Mission Style, the building originally known as Chapin Hall served as a dormitory until a later renovation transformed it into a classroom and departmental office facility. In 2005, the University commissioned Hillier Architecture to renovate and expand the original structure to establish a new home for the John J. Cali School of Music.

The facility includes a 250-seat recital hall; teaching studios; music practice and rehearsal rooms; and faculty offices. Another goal of the project is to achieve a rating under the U.S. Green Building Council’s Leadership in Energy & Environmental Design (LEED) Sustainable Design Rating System.



Reopened in fall 2009 following extensive renovation, **Panzer Gymnasium** (approximately 70,000 gross square feet) received upgrades to the competition gym, a new building entrance (façade) on College Avenue, interior upgrades, a new electrical system, and extensive upgrades to the present HVAC system.

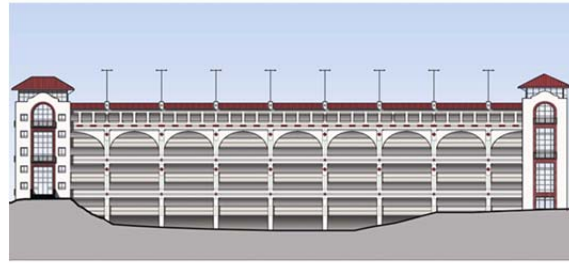


Montclair State University - Panzer Athletic Center
January, 2008



CarParc Diem

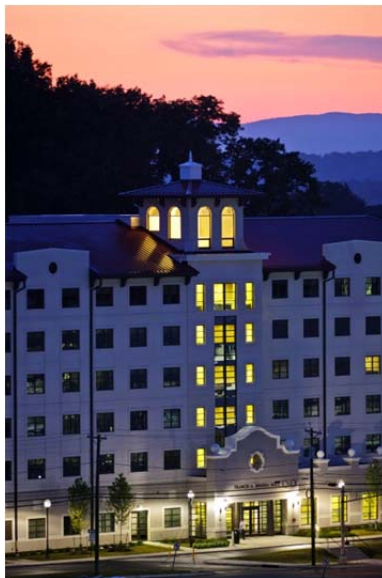
A 5-1/2 story parking structure opened in fall 2010. Located adjacent to Floyd Arena, the structure utilizes existing site conditions to provide approximately 1,100 parking spaces with a net gain of approximately 850 parking spaces. Design queues are consistent with the University's Spanish Mission Style. Advanced design elements allow for future sustainable actions to occur paralleling the activities with University Hall and the United States Green Building Council.



MSU - Parking Garage - East Elevation
April 20, 2009

Frank Sinatra Hall

Opened for occupancy in fall 2010, Frank Sinatra Hall is a 309 bed, 88,655 sq. ft., residence hall designed to meet the needs of the modern higher education student. The upper floors of the six story building each house between 45-50 sophomores in six to eight bed suites, and provide a lounge that promotes social activity among residents. The first floor includes an entry foyer, community resident director suite, three additional bedroom suites, building storage and mechanical, and a multipurpose room to hold both social and academic events. Interior space planning is designed to meet the needs of students who might be physically challenged. The design calls for minimum energy consumption and maximum maintenance efficiency, while blending with the Spanish Mission architectural style inherent to the campus.



The Heights

Pursuant to the New Jersey Economic Stimulus Act, the new student housing and dining project provides living space for 2,000 additional resident students and approximately 25,000 gross square

feet of dining space on the northern portion of campus in what were formerly parking lots 22 and 23. The developer of this project was Capstone Development of Birmingham, Alabama.



College Avenue Promenade Project

The College Avenue Promenade Project was completed in 2011. The scope of work included new landscaping, lighting, road curbing, sidewalks and site utilities in the area between Normal Avenue and the Red Hawk Deck. Also included within the parameters of the project was the reconstruction of the historic quad area between Chapin, Freeman and Russ Halls.



Conrad J. Schmitt Hall Renovation

The renovation of Conrad J. Schmitt Hall (formerly Finley Hall) was completed in spring 2012. The newly renovated building houses the departments of Linguistics, Modern Languages, and Spanish and Italian. It also houses state-of-the-art multimedia laboratories, including a multi-platform “newsroom of the future,” and is the new home of the University’s radio station, WMSC-FM.

Working journalists will be housed alongside student learning areas in Schmitt Hall, providing additional opportunities for teaching, mentoring, and collaboration. The University’s recently announced partnership with New York Public Radio (NYPR) to make Montclair State the headquarters for NYPR’s New Jersey Public Radio News is just such a collaboration, and it follows the recent partnership between Montclair State University and New Jersey’s public television network, NJTV. NJTV began broadcasting its nightly news program, NJ Today, from the University’s DuMont Television Center in December 2011, and the University now serves as headquarters for the network’s news division.

Schmitt Hall is also home to the Red Hawk Mathematics Learning Center (RHMLC) and the Schmitt Language Center (SLC). The RHMLC provides an innovative and exciting computer-aided, “emporium-style” approach to mathematics education that combines classroom instruction with user-friendly mathematics technology. The SLC offers a Free-Access Language Lab with large screen computers for collaborative pair work, separate video recording and viewing rooms, and distinct Digital Language Lab and Macintosh Lab classroom areas.



Combined Heating, Cooling, and Power Project

Montclair State University’s new environmentally friendly combined heating, cooling and power (CHCP) plant is now fully operational as of September 3, 2013.

The new facility provides the 250-acre campus with cost-effective and energy-efficient delivery of steam for heat, chilled water for air conditioning, and natural gas-fired generation of electricity through a new underground energy distribution system. The system provides Montclair State with 100 percent of its steam requirements and approximately 75 percent of its electricity needs.

The state-of-the-art CHCP facility is Montclair State's second public-private partnership construction project – after The Heights, completed in 2011 – facilitated by the 2009 New Jersey Economic Stimulus Act.

The University's partner in the \$90 million CHCP project is Energenic LLC, a leading developer and owner of combined heat and power systems. Energenic is a long-term partnership between DCO Energy LLC and Marina Energy LLC, which is a subsidiary of South Jersey Industries.



Current Campus Projects

Center for Environmental and Life Sciences (CELS)

The new Center for Environmental and Life Sciences (CELS) project is being designed to include 90,000 to 100,000 gross square feet of new academic and research space and associated development on the site of McEachern Hall. This new facility will consolidate and foster a new identity and hub of activity for the University's science programs.

Key components of the CELS program include: seven trans-disciplinary research lab group suites, six core research labs, a large lecture hall, five office suites, and lounge/study areas for students.

New School of Business Building

The new School of Business is a six-story, 143,000 square foot structure located adjacent to University Hall. The facility will house instructional spaces, administrative offices, conference and seminar rooms, departmental suites, group study rooms, large common lobby and lounge spaces, a café, and an open (surface) parking lot.

The lower level of the building houses academic classrooms and a limited amount of parking. A separate entrance from the covered parking area brings visitors to a lobby that provides elevator access to the floors above or a master staircase which leads to the cafeteria or the building atrium on the first floor.

Entrance to the first floor is either from the upper quad through the main lobby or from the lower level master staircase. The building is designed around a central atrium which connects the remaining five floors with a monumental stair. The first and second floors are designed to create a dynamic, energetic feel that supports student needs and services. The purpose of these floors is to create a series of transparent and semi-transparent spaces where student and faculty can meet and intermingle, accomplished via the use of wood-framed glass doors and window systems. Surrounding the atrium on the first floor are a series of small group study rooms, the Student Services Suite, the Executive Education Multi-Purpose Room, a large lecture hall and student lounge. The atrium on the second floor is ringed by additional small group study rooms and the graduate lounge all of which have large windows overlooking the floor below.

Floors 3 through 5 incorporate a mix of academic offices and classroom areas clustered into distinct zones and separated by department offices, and seminar and conference rooms.

The design of the building complements and draws from the Spanish Mission architectural design vocabulary used in University Hall. The building will exemplify the University's commitment to sustainable design and its intent to achieve a Silver LEED rating. Audio/Visual and technology systems shall be designed as an integral part of the building's infrastructure to help support the teaching curriculum.

Technology Improvements

New Administrative Computer Systems

Montclair State University is upgrading and improving its current enterprise administrative computer systems which house student, employee, and finance data. The project, known as OneMontclair, involves implementation of the Oracle PeopleSoft Financial Management System, the Ellucian Banner student system, and the Workday Human Capital Management employee system. In addition, the University will identify and implement an integrated data warehousing and business intelligence solution appropriate for our planned, “best of class” approach to enterprise systems.

Wireless Local Area Network

The University continues to improve upon the technology infrastructure and resources available to the University community to ensure they are able to effectively carry out the University’s teaching, learning and research mission.

The University is upgrading its wireless network infrastructure to the high speed, backbone class 802.11n protocol and expanding the coverage to ensure pervasive access to the University’s information resources throughout the campus. This \$5 million project will ensure that members of the University community have wireless service in every residence hall, academic space, and administrative building. Coverage will extend to all outdoor areas, including parking lots and garages.