

# MONTCLAIR STATE

---

# UNIVERSITY

## Annual Institutional Profile Report

Fall 2012

September, 2012

## **PREFACE**

Now in its second century, Montclair State University has earned a national reputation for excellence and innovation. The University offers a broad array of undergraduate and graduate programs in the liberal arts and sciences, as well as in professional fields in business, the arts, and education. Recent recognition of the University's quality has come from Forbes Magazine, which again recognized Montclair State University as one of the top public post-secondary institutions in New Jersey.

Montclair State is currently in a period of significant growth and development with growing enrollments, new programs, new faculty, and expanding physical facilities. As the University enters its second century, it takes pride in its rich history of bold educational innovation, inspired teaching, and vital service to the state.

### **Institutional Mission**

Montclair State University is committed to serving the educational needs of New Jersey with programs characterized by academic rigor and currency in the development of knowledge and its applications. The University will offer a comprehensive range of baccalaureate, master's and certificate programs and a focused portfolio of doctoral programs that are closely aligned with the University's academic strengths and the needs of the state.

The University will recruit faculty with exceptional academic or professional credentials and a deep commitment to the pursuit of their development as teachers and scholars. The University will admit to study with this faculty, students who have demonstrated the potential for high achievement, diligence in the pursuit of their education, and high aspirations for using their education. The University will be inexorably committed to the maintenance of a learning community that is deeply and broadly reflective of the diverse population of New Jersey.

All University programs will develop in students the ability to discover, create, evaluate, apply, and share knowledge in a climate characterized by tolerance and openness in the exploration of ideas. Curricular and co-curricular programs will cultivate the ability to think critically, to act ethically, and to become informed citizen-participants prepared to assume leadership roles in a democracy. Recognizing the increasing connectedness of the world, the University will ensure that all students develop an understanding of global issues and of their responsibilities as citizens of the world.

The University will serve as a center for the creation of new knowledge and for the development of innovative applications of existing knowledge and as a center for pedagogical and artistic excellence and creativity. The University seeks to focus the professional activities of its faculty and the educational endeavors of its students on the enduring disciplines that will continue to constitute the knowledge base of an educated citizenry in the 21st century, as well as on the more specific and changing areas of study that have particular relevance to the region served by the University.

The University will play a role beyond the campus community, partnering and collaborating at the local, state, national and international levels to make positive contributions to addressing issues of importance to society, to enable students to experience their ability to use knowledge in constructive ways in the world, and to share the rich array of intellectual and cultural resources of the University with the people of New Jersey.



---

Dr. Susan A. Cole  
President  
Montclair State University

**I. TABLE OF CONTENTS**

II. Data by Category ..... 1

SECTION A: Accreditation Status ..... 1

SECTION B: Number of Students Served ..... 4

SECTION C: Characteristics of Undergraduate Students ..... 5

SECTION D: Student Outcomes ..... 11

SECTION E: Faculty Characteristics ..... 14

SECTION F: Characteristics of the Trustees..... 16

SECTION G: A Profile of the Institution..... 17

SECTION H: Major Research and Public Service Activities..... 21

SECTION I: Major Capital Projects..... 51

Appendix 1: 2011-2012 Economic Impact Report

Appendix 2: University Authors, 2012

## **II. DATA BY CATEGORY**

### A. Accreditation Status

Montclair State University is accredited by the Commission on Higher Education of the Middle States Association of Colleges and Schools. Programs leading to a degree or certificate (not certification) are approved by the Office of the Secretary of Higher Education of the State of New Jersey. Programs leading to certification are approved by the New Jersey Department of Education using the standards of the National Association of State Directors of Teacher Education and Certification.

Other academic accreditations include:

- National Council for the Accreditation of Teacher Education (NCATE) — for programs preparing elementary and secondary school teachers, as well as administrative and school service personnel
- AACSB International — The Association to Advance Collegiate Schools of Business (baccalaureate and graduate degree programs in business, School of Business)
- Commission on Accreditation of Allied Health Education Programs (Athletic Training major, BS, Department of Exercise Science and Physical Education, College of Education and Human Services)
- Accreditation Council for Education in Nutrition and Dietetics (ACEND) of the Academy of Nutrition and Dietetics (Didactic Program in Dietetics, Baccalaureate level; Dietetic Internship, Department of Health and Nutrition Sciences)
- Computing Accreditation Commission (CAC) of the Accreditation Board for Engineering and Technology (ABET) (Computer Science major, concentration in Professional Computing, BS, Department of Computer Science, College of Science and Mathematics)
- Council for the Accreditation of Counseling and Related Education Programs (CACREP) – Counseling, M.A.
- Council on Academic Accreditation (CAA) in Audiology and Speech-Language Pathology of the American Speech Language Hearing Association (ASHA). CAA has accredited the M.A. concentration in Speech-Language Pathology; and the doctoral program in Audiology (ScD) in the Department of Communication Sciences and Disorders, College of Humanities and Social Sciences
- National Association of Schools of Art and Design (Fine Arts major, concentrations in Art History, Fine Arts Education, Studio, BA; Fine Arts/Studio major and concentrations in Industrial Design and in Filmmaking, BFA; Fine Arts major, concentration in Studio, MA; Studio Art major, MFA, Department of Art and Design, College of the Arts)
- National Association of Schools of Dance (Dance major and concentration in Musical Theatre, BFA, Department of Theatre and Dance, College of the Arts)

*Annual Institutional Profile of Montclair State University, 2012*

- National Association of Schools of Music (Music Therapy major, BA; Music major, concentrations in Musical Theatre, Performance, Theory/Composition, BMus; Music major, concentrations in Music Education, Music Therapy, Performance, and Theory/Composition, MA, John J. Cali School of Music, College of the Arts)
- National Association of Schools of Theatre (Theatre major with concentrations in Acting and in Production/Design, BFA; Theatre major with concentrations in Arts Management, Production/Stage Management, and Theatre Studies, MA, Department of Theatre and Dance, School of the Arts)

Program approvals include:

- American Alliance for Health, Physical Education, Recreation, and Dance (AAHPERD)/American Association for Health Education (AAHE): Health Education major, BS, initial teacher certification, P-12
- American Alliance for Health, Physical Education, Recreation and Dance (AAHPERD)/National Association for Sport and Physical Education (NASPE): Physical Education major, BS, initial teacher certification, P-12
- American Bar Association: Justice Studies major, Paralegal Studies concentration, BA. Paralegal Studies minor; Post-baccalaureate Certificate Program in Paralegal Studies
- American Chemical Society: Biochemistry major, BS; Chemistry major, BS. Chemistry minor; Chemistry major, MS; Chemistry major, Biochemistry concentration, MS
- American Music Therapy Association: Music Therapy major, BA; Music major, concentration in Music Therapy, MA
- Council for Exceptional Children: Early Childhood Special Education major, MEd; Learning Disabilities major, MEd; Learning Disabilities Teacher-Consultant, post-master's certification; Communication Sciences and Disorders major, concentration in Speech-Language Pathology, MA
- Educational Leadership Constituent Council (ELCC): Educational Leadership major, MA
- International Reading Association (IRA): Reading major, MA; Reading Specialist, post-baccalaureate educational services certification, P-12
- National Association for the Education of Young Children (NAEYC): Family and Child Studies major, concentration in Early Childhood, BA, initial teacher certification, P-3
- National Association for Music Therapy: Music Therapy major, BA
- National Council for the Social Studies (NCSS): Anthropology major, BA, initial teacher certification, P-12; History major, BA, initial teacher certification, P-12; Political Science major, BA, initial teacher certification, P-12; Sociology major, BA, initial teacher certification, P-12; Geography major, BA, initial teacher certification, P-12; Economics major, BA, initial teacher certification, P-12; Social Studies, MAT, initial teacher certification, P-12; Social Studies, post-baccalaureate teacher certification, P-12
- National Council of Teachers of English (NCTE): English major, BA, initial teacher certification, 6-12; English, MAT, initial teacher certification, 6-12; English, post-baccalaureate teacher certification, 6-12

*Annual Institutional Profile of Montclair State University, 2012*

- National Council of Teachers of Mathematics (NCTM): Mathematics major (BS), initial teacher certification, 6-12; Mathematics, MAT, initial teacher certification, 6-12; Mathematics, post-baccalaureate teacher certification, 6-12
- Teachers of English to Speakers of Other Languages (TESOL): Linguistics major BA, initial teacher certification, P-12; Teaching English as a Second Language, MAT, initial teacher certification, P-12; Teaching English as a Second Language, post-baccalaureate teacher certification, P-12

B. Number of Students Served

Fall 2011 Undergraduates

In fall 2011, 14,590 undergraduates enrolled at Montclair State University (see Table II.B.1). This headcount was up 1.4% from fall 2010, and 33.4% from fall 2002.

<b>Table II.B.1: Undergraduate Enrollment by Attendance Status, Fall 2011</b>		
	<b>Number</b>	<b>Percent</b>
<b>Full-time</b>	<b>12,524</b>	<b>85.8%</b>
<b>Part-time</b>	<b>2,066</b>	<b>14.2%</b>
<b>Total</b>	<b>14,590</b>	<b>100.0%</b>

The proportion of undergraduates studying full-time also rose over the 10-year period. The percent of undergraduates enrolled full-time increased nearly 9 percentage points, from 77.2% in fall 2002 to 85.8% in fall 2011.

Fall 2011 Graduate Students

Montclair State University enrolled 3,908 graduate students in fall 2011 (see Table II.B.2). This graduate student headcount was down 2.8% from fall 2010, but up 4.7% from fall 2002.

<b>Table II.B.2: Graduate Enrollment by Attendance Status, Fall 2011</b>		
	<b>Number</b>	<b>Percent</b>
<b>Full-time</b>	<b>1,148</b>	<b>29.4%</b>
<b>Part-time</b>	<b>2,760</b>	<b>70.6%</b>
<b>Total</b>	<b>3,908</b>	<b>100.0%</b>

The proportion of graduate students studying full-time was higher than 10 years earlier. The percent of graduate students enrolled full-time rose over 10 percentage points, from 19.3% in fall 2002 to 29.4% in fall 2011.

FY11 (12-Month) Unduplicated Enrollments

Montclair State University enrolled 21,834 students over the course of the 2010-2011 academic year (see Table II.B.4). The 12-month full-time equivalent (FTE) enrollment was 16,220.

<b>Table II.B.4: Unduplicated Enrollment, FY11 (IPEDS 12-Month)</b>			
	<b>Headcount</b>	<b>Credit Hours</b>	<b>FTE</b>
<b>Undergraduate</b>	<b>16,654</b>	<b>413,720</b>	<b>13,791</b>
<b>Graduate</b>	<b>5,180</b>	<b>58,299</b>	<b>2,429</b>
<b>Total</b>	<b>21,834</b>	<b>472,019</b>	<b>16,220</b>



C. Characteristics of Undergraduate Students

Fall 2011 Freshmen

A total of 12,585 individuals applied for admission as first-time freshmen to Montclair State University in fall 2011, up 65% from fall 2002. The University admitted 56.7% of these applicants, and 2,356 of those who were admitted to the University enrolled as freshmen for a yield of 33.0%. The fall 2011 admissions yield was approximately 5.3 percentage points lower than in fall 2002.

Fall 2011 freshmen entered MSU as either regular admits, special admits, or students admitted through the Educational Opportunity Fund (EOF) program. By admitting students using different admissions categories, the University fulfilled the hopes and aspirations of more of its applicants. Of MSU's 2,338 full-time, first-time students (IPEDS cohort), 89.9% were Regular Admits, 4.6% were admitted through the EOF program, and 5.5% were Special Admits (see Table II.C.1).

MSU's fall 2011 full-time, first-time students (IPEDS cohort) had an average combined (Math and Critical Reading) SAT score of 990. Regularly admitted full-time entrants had a mean SAT score of 1,003, while EOF entrants and special admits had mean combined SAT's of 826 and 925, respectively. For all full-time students (IPEDS cohort), the average math SAT score (503) exceeded the average critical reading (488) and writing (494) scores (see Table II.C.1).

**TABLE II.C.1: Mean Math, Reading & Writing SAT for First-Time IPEDS Cohort, by Admission Status and Overall, Fall 2011**

Type	Full-Time				Part-Time			
	Number	Math	Read	Write	Number	Math	Read	Write
Regular	2,109	509	494	500	7	497	490	463
EOF	108	414	411	413	0	-	-	-
Special	139	471	453	461	11	470	423	230
All	2,356	503	488	494	18	488	468	416
Missing	-	71	71	74	-	9	9	13

In fall 2011, Montclair State University used the College Board's suite of Accuplacer tests to assess college readiness in elementary algebra. College readiness in writing was initially assessed using the SAT essay and writing scores, in combination, followed by a faculty review of early writing samples.

Incoming freshmen whose SAT-Math scores were below 550, or who failed to attain at least a B-score in Algebra II in high school, were required to take the Accuplacer elementary algebra portion of Accuplacer. Everyone's SAT-W and SAT-essay scores were examined for possible placement into developmental writing; followed by a faculty review of writing samples.

Between 2006 and 2011, the number of undergraduates enrolled in one or more remedial courses declined 52%, while the number of full-time, first-time students in remediation declined 44%.

**Table II.C.2: Enrollment in Remedial Courses, Fall 2011**

<b>Total Fall 2011 Undergraduate Enrollment</b>	<b>Number of Students Enrolled in One or More Remedial Courses</b>	<b>Percent of Total</b>
<b>14,590</b>	<b>619</b>	<b>4.2%</b>
<b>Total Number of Full-time, First-time Students</b>	<b>Number of FTFT Students Enrolled in One or More Remedial Courses</b>	<b>Percent of FTFT Students Enrolled in One or More Remedial Course</b>
<b>2,338</b>	<b>494</b>	<b>21.1%</b>
<b>Remedial Subject Area</b>	<b>Number of FTFT Students Enrolled in</b>	<b>Percent of FTFT Students Enrolled in</b>
<b>Reading</b>	<b>0</b>	<b>0.0%</b>
<b>Writing</b>	<b>266</b>	<b>11.4%</b>
<b>Math Computation</b>	<b>0</b>	<b>0.0%</b>
<b>Elementary Algebra</b>	<b>274</b>	<b>11.7%</b>

A CIRP survey administered to fall 2010 first-time freshmen revealed that over 90% considered MSU their first or second choice among colleges. The survey also revealed that the top three reasons freshmen chose MSU were: a) its good academic reputation (64%), b) the success of its graduates in finding good jobs (51%), and c) its affordability (49%).

The profile of the fall 2011 entering class reflects the continuing commitment of the University to an ethnically and racially diverse student body. Excluding unknowns, 10% of first-time undergraduates identified themselves as African American, 5% as Asian, and 24% as Latino/a. Over 1% of first-time students were non-resident aliens, and nearly 61% were female.

#### Fall 2011 Undergraduates

In fall 2011, a total of 18,498 students attended Montclair State University. Of this total, 14,590 (or 78.9% of all enrollees) were registered as undergraduates. The number of undergraduates attending the University rose 12% between fall 2007 and fall 2011. Nearly 86% of fall 2011 undergraduates attended the University full-time, up two percentage points from fall 2007. MSU's undergraduates were racially/ethnically diverse. Excluding unknowns, nearly 24% of undergraduates identified themselves as Latino/a, 10% as African American, 6% as Asian, 55% White, and 4% non-resident aliens (see Table II.C.3.a).

**TABLE II.C.3.a: Undergraduate Enrollment by Race/Ethnicity, Fall 2011**

	Full-time		Part-time		Total	
	Number	Percent	Number	Percent	Number	Percent
Native Amer.	15	0.1%	3	0.1%	18	0.1%
African Amer.	1,109	8.9%	193	9.3%	1,302	8.9%
Asian	677	5.4%	112	5.4%	789	5.4%
Latino/a	2,622	20.9%	473	22.9%	3,095	21.2%
White	6,220	49.7%	954	46.2%	7,174	49.2%
Non-Res. Alien	415	3.3%	57	2.8%	472	3.2%
Unknown	1,466	11.7%	274	13.3%	1,740	11.9%
<b>Total</b>	<b>12,524</b>	<b>100.0%</b>	<b>2,066</b>	<b>100.0%</b>	<b>14,590</b>	<b>100.0%</b>

In fall 2011, 60% of all undergraduates were female, and the average age of the undergraduate population was 22.4 years (see Tables II.C.3.b and II.C.3.c).

**TABLE II.C.3.b: Undergraduate Enrollment by Sex, Fall 2011**

	Full-time		Part-time		Total	
	Number	Percent	Number	Percent	Number	Percent
Female	7,574	60.5%	1,235	59.8%	8,809	60.4%
Male	4,950	39.5%	831	40.2%	5,781	39.6%
<b>Total</b>	<b>12,524</b>	<b>100.0%</b>	<b>2,066</b>	<b>100.0%</b>	<b>14,590</b>	<b>100.0%</b>

**TABLE II.C.3.c: Undergraduate Enrollment by Age, Fall 2011**

	Full-time		Part-time		Total	
	Number	Percent	Number	Percent	Number	Percent
Less than 18	24	0.2%	24	1.2%	48	0.3%
18-19	3,833	30.6%	33	1.6%	3,866	26.5%
20-21	4,692	37.5%	187	9.1%	4,879	33.4%
22-24	2,823	22.5%	739	35.8%	3,562	24.4%
25-29	708	5.7%	445	21.5%	1,153	7.9%
30-34	232	1.9%	213	10.3%	445	3.1%
35-39	83	0.7%	133	6.4%	216	1.5%
40-49	93	0.7%	179	8.7%	272	1.9%
50-64	35	0.3%	106	5.1%	141	1.0%
More than 64	1	0.0%	7	0.3%	8	0.1%
Unknown	0	0.0%	0	0.0%	0	0.0%
<b>Total</b>	<b>12,524</b>	<b>100.0%</b>	<b>2,066</b>	<b>100.0%</b>	<b>14,590</b>	<b>100.0%</b>

*Annual Institutional Profile of Montclair State University, 2012*

During FY2011, MSU's undergraduates received financial aid from Federal, State, University, and private sources. Aid took multiple forms, from grants and scholarships, through loans and waivers. For those who needed financial assistance, the MSU Alumni Association and the MSU Foundation sponsored a number of scholarships, and special MSU program awards were substantial, amounting to nearly \$3.6 million during FY11. During the same fiscal year, Federal grants, loans, and work-study programs amounted to nearly \$92 million.

During FY11, MSU distributed over \$25 million in state-funded financial aid, including both scholarships and NJCLASS loans (see Table II.C.4). A total of 5,513 awards were made to MSU students, including 3,717 TAG Awards, 742 NJCLASS Loans, and 681 EOF Awards.

**Table II.C.4: Financial Aid from Federal, State & Institution-Funded Programs, FY2011**

	Recipients	\$ Dollars	\$/Recipient
<b><u>STATE PROGRAMS</u></b>			
<b>TAG</b>	3,717	\$15,463,000	\$4,160
<b>EOF</b>	681	\$791,000	\$1,162
<b>Distinguished Scholars</b>	110	\$100,000	\$909
<b>Urban Scholars</b>	96	\$85,000	\$885
<b>NJCLASS Loans</b>	742	\$8,008,000	\$10,792
<b>NJ Stars</b>	167	\$938,000	\$5,617
<b>OSRP</b>	0	\$0	--
<b><u>FEDERAL PROGRAMS</u></b>			
<b>Pell Grants</b>	5,325	\$22,065,000	\$4,144
<b>College Work Study</b>	485	\$636,000	\$1,311
<b>Perkins Loans</b>	152	\$309,000	\$2,033
<b>SEOG</b>	521	\$690,000	\$1,324
<b>Stafford Loans (Subsidized)</b>	7,129	\$29,932,000	\$4,199
<b>Stafford Loans (Unsubsidized)</b>	7,548	\$28,590,000	\$3,788
<b>PLUS Loans</b>	855	\$8,544,000	\$9,993
<b>SMART &amp; ACG or other</b>	973	\$1,166,000	\$1,198
<b><u>INSTITUTIONAL PROGRAMS</u></b>			
<b>Grants/Scholarships</b>	870	\$3,589,000	\$4,125
<b>Loans</b>	0	\$0	\$0

Of MSU's 2,338 full-time, first-time undergraduates who entered in fall 2011, 96% were New Jersey residents (see Table II.C.5). Most were from Bergen (387), Essex (281), and Passaic (248) counties.

**Table II.C.5: Full-time, First-Time Student Enrollment by State of Residence, Fall 2011**

<b>State Residents</b>	<b>Non-State Residents</b>	<b>Total Students</b>	<b>% State Residents</b>
<b>2,232</b>	<b>106</b>	<b>2,338</b>	<b>95.5%</b>

Fall 2011 Graduate Students

Of the 18,498 students who attended Montclair State University in fall 2011, 3,908 (21%) were graduate students. Graduate student enrollment rose more than 5% between fall 2007 and fall 2011.

Most graduate students (71%) attended MSU part-time, taking fewer than nine credits per semester. Seventy-two percent of fall 2010 graduate students were female, and the average age of the graduate student population was 32 years. Excluding unknowns, 9% of graduate students identified themselves as African American, 5% as Asian, 12% as Latino/a, 69% as White, and 4% as non-resident aliens. Nearly 94% of MSU's graduate students are New Jersey residents.

D. Student Outcomes

Over 62% of all full-time, first-time freshmen who entered MSU in the fall of 2005 earned a degree within six years of entry (see Table II.D.1.a). Non-Resident Alien (69.0%), White (65.2%), and Asian (64.6%) students had the highest, six-year graduation rates.

**TABLE II.D.1.a: Four-, Five-, and Six-Year Graduation Rates of Fall 2005 Full-Time, First-Time Freshmen by Race/Ethnicity**

	Graduated in 4 Years		Graduated in 5 Years		Graduated in 6 Years	
	Number	Percent	Number	Percent	Number	Percent
<b>African Amer.</b>						
Cohort=201	49	24.4%	85	42.3%	101	50.2%
<b>Asian</b>						
Cohort=130	46	35.4%	78	60.0%	84	64.6%
<b>Latino/a</b>						
Cohort=346	114	32.9%	184	53.2%	204	59.0%
<b>White</b>						
Cohort=1,146	414	36.1%	699	61.0%	747	65.2%
<b>Non-Res. Alien</b>						
Cohort=29	9	31.0%	19	65.5%	20	69.0%
<b>Other*</b>						
Cohort=16	3	18.8%	7	43.8%	8	50.0%
<b>Total</b>						
Cohort=1,868	635	34.0%	1,072	57.4%	1,164	62.3%

\* Includes Native American and Unknown Race/Ethnicity.

Nearly 94% of all full-time, first-time undergraduates who entered MSU in fall 2010 re-enrolled in spring 2011, and 81.8% returned in fall 2011 (see Table II.D.2).

**TABLE II.D.2: Third-Semester Retention of First-Time Undergraduates, Fall 2010 to 2011**

	Original Cohort	Retained		Not Retained	
	Number	Number	Percent	Number	Percent
<b>Full-time</b>	2,171	1,775	81.8%	396	18.2%
<b>Part-time</b>	19	7	36.8%	12	63.2%
<b>Total</b>	2,190	1,782	81.4%	408	18.6%

### Transfer Student Outcomes

Of the 939 students who entered MSU as full-time transfer students in fall 2005, 55% earned their degrees within three years, 69% earned degrees within four years, and 76% earned degrees within six years. The six-year graduation rate for fall 2005 full-time transfer students who entered as freshmen was 65%, while 72% of those who entered as sophomores, 84% of those who entered as juniors, and 75% of those who entered as seniors also earned a degree within six-years. The one-year retention rate for full-time transfer students who entered in fall 2010 was 84%.

### Other Student Outcomes

Using data from the National Student Clearinghouse, 25,102 alumni who earned Bachelor's degrees over a ten-year period were tracked to determine how many had furthered their education by enrolling in graduate school. The analysis revealed that 8,647 (34%) of these alumni continued their formal education, and of those who continued their education, 2,730 (32%) earned graduate degrees, including 213 doctorates and 2,517 Master's degrees.

A recent survey of alumni conducted one year from graduation revealed that 88% of Bachelor's degree recipients were gainfully employed. A majority (89%) of employed alumni said they worked in New Jersey, thus contributing to the State's economy. Over 70% said they held jobs that were related to their MSU majors.

Montclair State University participates in the Voluntary System of Accountability (VSA) that is co-sponsored by the Association of Public and Land-grant Universities (APLU) and the American Association of State Colleges and Universities (AASCU) with support from the Lumina Foundation. As indicated on the VSA web site ([www.voluntarysystem.org](http://www.voluntarysystem.org)) "The Voluntary System of Accountability is an initiative by public 4-year universities to supply basic, comparable information on the undergraduate student experience to prospective students, families, and other higher education stakeholders through a common web report – the College Portrait." MSU is one of only six institutions in New Jersey that voluntarily share information about student outcomes to all interested parties, clearly demonstrating our commitment to both data transparency and the continuous improvement of student learning outcomes. Montclair State University's VSA College Profile can be viewed at [www.collegeportraits.org](http://www.collegeportraits.org) by clicking on "College Portraits," and selecting New Jersey under the "Colleges by State" tab.

Local assessment efforts are led by the Committee on University Effectiveness (CUE). During the past year, CUE collected student learning outcome goals, information on assessment methods, and assessment data from academic departments related to learning in the major, and assessed student learning in general education using the Collegiate Learning Assessment (CLA) instrument.

The 2010-2011 CLA results were very positive, showing clear freshman to senior learning gains, as well as favorable performance, particularly for seniors, relative to the national data from 184 participating institutions. Faculty will closely analyze the results during the coming academic year to determine ways to improve learning in general education even further.



CUE also works closely with non-academic units to involve them in the assessment of even broader areas of institutional effectiveness. The current focus of this effort is on achieving the 132 objectives of the University's Strategic Plan approved in October 2011. Information on planning unit goals and objectives from every Division of the University are being collected, along with their assessment plans, methods, and results. All assessment data related to Institutional Effectiveness are being collected and stored in TracDat.

CUE's efforts are also informed by information gathered from students through the University's participation in the National Survey of Student Engagement (NSSE), the Noel-Levitz Student Satisfaction Inventory, and the Cooperative Institutional Research Program (CIRP) surveys of entering freshman and exiting seniors. Faculty and staff perspectives on student outcomes are revealed through the Faculty Survey of Student Engagement (FSSE), the Higher Education Research Institute (HERI) survey of faculty, and the Noel-Levitz Institutional Priorities Survey. These national surveys are supplemented with a number of local surveys of alumni, entering transfer and graduate students, and University employees (both faculty and staff).

E. Faculty Characteristics

In fall 2011, Montclair State University employed 569 full-time faculty members (see Table II.E.1).

<b>TABLE II.E.1: Full-time Faculty by Race/Ethnicity, Sex, Tenure Status, and Academic Rank, Fall 2011</b>															
	<b>Female</b>					<b>Male</b>					<b>Total</b>				
	<b>Professor</b>	<b>Associate</b>	<b>Assistant</b>	<b>Other</b>	<b>Total</b>	<b>Professor</b>	<b>Associate</b>	<b>Assistant</b>	<b>Other</b>	<b>Total</b>	<b>Professor</b>	<b>Associate</b>	<b>Assistant</b>	<b>Other</b>	<b>Total</b>
<b>Native Amer.</b>	<b>0</b>	<b>0</b>	<b>0</b>	<b>0</b>	<b>0</b>	<b>0</b>	<b>0</b>	<b>0</b>	<b>0</b>	<b>0</b>	<b>0</b>	<b>0</b>	<b>0</b>	<b>0</b>	<b>0</b>
Tenured	0	0	0	0	0	0	0	0	0	0	0	0	0	0	0
Untenured	0	0	0	0	0	0	0	0	0	0	0	0	0	0	0
<b>African Amer.</b>	<b>6</b>	<b>6</b>	<b>10</b>	<b>0</b>	<b>22</b>	<b>6</b>	<b>6</b>	<b>6</b>	<b>0</b>	<b>18</b>	<b>12</b>	<b>12</b>	<b>16</b>	<b>0</b>	<b>40</b>
Tenured	6	6	8	0	20	6	6	1	0	13	12	12	9	0	33
Untenured	0	0	2	0	2	0	0	5	0	5	0	0	7	0	7
<b>Asian</b>	<b>5</b>	<b>12</b>	<b>11</b>	<b>0</b>	<b>28</b>	<b>19</b>	<b>13</b>	<b>9</b>	<b>0</b>	<b>41</b>	<b>24</b>	<b>25</b>	<b>20</b>	<b>0</b>	<b>69</b>
Tenured	5	11	1	0	17	18	13	2	0	33	23	24	3	0	50
Untenured	0	1	10	0	11	1	0	7	0	8	1	1	17	0	19
<b>Latino/a</b>	<b>4</b>	<b>7</b>	<b>8</b>	<b>1</b>	<b>20</b>	<b>5</b>	<b>9</b>	<b>1</b>	<b>1</b>	<b>16</b>	<b>9</b>	<b>16</b>	<b>9</b>	<b>2</b>	<b>36</b>
Tenured	4	7	2	0	13	5	7	1	0	13	9	14	3	0	26
Untenured	0	0	6	1	7	0	2	0	1	3	0	2	6	2	10
<b>White</b>	<b>58</b>	<b>68</b>	<b>50</b>	<b>11</b>	<b>187</b>	<b>76</b>	<b>78</b>	<b>39</b>	<b>1</b>	<b>194</b>	<b>134</b>	<b>146</b>	<b>89</b>	<b>12</b>	<b>381</b>
Tenured	54	62	13	0	129	71	71	12	1	155	125	133	25	1	284
Untenured	4	6	37	11	58	5	7	27	0	39	9	13	64	11	97
<b>Non-Res. Alien</b>	<b>0</b>	<b>0</b>	<b>9</b>	<b>0</b>	<b>9</b>	<b>0</b>	<b>1</b>	<b>5</b>	<b>0</b>	<b>6</b>	<b>0</b>	<b>1</b>	<b>14</b>	<b>0</b>	<b>15</b>
Tenured	0	0	0	0	0	0	0	1	0	1	0	0	1	0	1
Untenured	0	0	9	0	9	0	1	4	0	5	0	1	13	0	14
<b>Missing</b>	<b>0</b>	<b>2</b>	<b>10</b>	<b>2</b>	<b>14</b>	<b>3</b>	<b>3</b>	<b>8</b>	<b>0</b>	<b>14</b>	<b>3</b>	<b>5</b>	<b>18</b>	<b>2</b>	<b>28</b>
Tenured	0	1	0	0	1	3	3	0	0	6	3	4	0	0	7
Untenured	0	1	10	2	13	0	0	8	0	8	0	1	18	2	21
<b>Total</b>	<b>73</b>	<b>95</b>	<b>98</b>	<b>14</b>	<b>280</b>	<b>109</b>	<b>110</b>	<b>68</b>	<b>2</b>	<b>289</b>	<b>182</b>	<b>205</b>	<b>166</b>	<b>16</b>	<b>569</b>
Tenured	69	87	24	0	180	103	100	17	1	221	172	187	41	1	401
Untenured	4	8	74	14	100	6	10	51	1	68	10	18	125	15	168

The number of full-time faculty increased 16% from fall 2006 (N=491) to fall 2011 (N=569). From fall 2006 to fall 2011, the number of full-time male faculty members rose 6% (273 to 289), while the number of full-time female faculty members increased 28% (218 to 280).

MSU's full-time faculty was augmented by a highly-trained cadre of adjunct professors, visiting specialists, administrators, and professional staff (see Table II.F.2).

**Table II.E.2: Percent of Course Sections Taught By Full-Time Faculty, Fall 2011**

No. of Sections	# taught by F-T Faculty	% taught by F-T Faculty	# taught by P-T Faculty	% taught by P-T Faculty	# taught by Others	% taught by Others
4,050	2,012	49.7%	1,804	44.5%	234	5.8%

Table II.E.3 shows IPEDS headcounts of fall 2011 employees in instructional titles. Note that the IPEDS headcount of full-time instructional staff (569) includes employees on paid leaves (e.g., sabbaticals), while excluding employees on unpaid leaves (i.e., not all of these 569 taught in the fall).

**Table II.E.3: Headcount Ratio of Full- to Part-Time Faculty, Fall 2011**

Total No. of Faculty	No. Full-Time	Pct. Full-Time	No. Part-Time	Pct. Part-Time
1,588	569	35.8%	1,019	64.2%

F. Characteristics of the Trustees

1. Race/Ethnicity and Gender of Governing Board

	White	Black	Hispanic	Asian	American Indian	Non-Res Alien	Unknown	Total
Male	11	2						13
Female	4							4
Total	15	2	0	0	0	0	0	17

2. Members of the Board of Governors and/or Trustees

Name	Title	Affiliation
Susan L. Blount	Senior Vice-President and General Counsel	Prudential Financial, Inc.
Alexei Bychkov	Student	Montclair State University
Rose C. Cali	Education Advocate	
Michael L. Carter	Managing Director	Barclays Capital
Francis M.C. Cuss	Senior Vice President	Bristol-Myers Squibb Company
Mitchell E. Hersh	President and CEO	Mack-Cali Realty
George J. Hiltzik	Senior Executive	N.S. Bienstock, Inc.
Douglas L. Kennedy	Former President, NJ Division	Formerly Capital One Bank
Ralph A. LaRossa	President and COO	PSE&G
Thomas Maguire	Senior Vice President	Verizon Telecom
John L. McGoldrick	Chairman of the Board	Zimmer Holdings
William T. Mullen	President	NJ State Building and Construction Trades Council AFL-CIO
Christine L. Padilla	Owner and Consultant	BIT Solutions, LLC
Preston D. Pinkett III	Chief Executive Officer	City National Bank of New Jersey
J. Thomas Presby	Partner	Compass Partners
Susan A. Cole, <i>ex officio</i>	President	Montclair State University
Kyle Bunting, <i>ex officio</i>	Student	Montclair State University

3. URL

If your organization has a web site that includes information on your governing board, please report the URL.

URL <http://www.montclair.edu/bot/>

G. A Profile of the Institution

Montclair State University offered the following programs and majors at the undergraduate and graduate levels in fall 2011:

<b>FALL 2011 ACTIVE DEGREE PROGRAMS</b>	
<b>DEGREE PROGRAMS</b>	<b>CIP CODE*</b>
<b><i>BACHELOR OF ARTS</i></b>	
ANTHROPOLOGY	450201
BROADCASTING	090701
CLASSICS	161201
CHILD ADVOCACY AND POLICY	440701
COMMUNICATION STUDIES	090101
DANCE EDUCATION	131324
ECONOMICS	450601
ENGLISH	230101
FAMILY AND CHILD STUDIES	190101
FASHION STUDIES	500407
FINE ARTS	500701
FRENCH	160901
GENERAL HUMANITIES	240103
GEOGRAPHY	450701
HISTORY	540101
ITALIAN	160902
JURISPRUDENCE	229999
JUSTICE STUDIES	309999
LATIN	161203
LINGUISTICS	160102
MUSIC THERAPY	512305
PHILOSOPHY	380101
POLITICAL SCIENCE	451001
PSYCHOLOGY	420101
RELIGIOUS STUDIES	380201
SOCIOLOGY	451101
SPANISH	160905
THEATRE STUDIES	500501
WOMEN'S & GENDER STUDIES	050207
<b><i>BACHELOR OF FINE ARTS</i></b>	
ANIMATION AND ILLUSTRATION	500499
DANCE	500301
FILMMAKING	500602
FINE ARTS/STUDIO	500701
GRAPHIC DESIGN	500409
MUSICAL THEATRE	500901
THEATRE	500501

**FALL 2011 ACTIVE DEGREE PROGRAMS (cont.)**

<b>DEGREE PROGRAMS</b>	<b>CIP CODE*</b>
<b><i>BACHELOR OF MUSIC</i></b>	
MUSIC	500903
<b><i>BACHELOR OF SCIENCE</i></b>	
ACCOUNTING	520301
AQUATIC AND COASTAL SCIENCES	309999
ATHLETIC TRAINING	510913
BIOCHEMISTRY	260202
BIOLOGY	260101
BUSINESS ADMINISTRATION	520201
CHEMISTRY	400501
COMPUTER SCIENCE	110101
EXERCISE SCIENCE	310505
GEOSCIENCE	400601
HEALTH EDUCATION	131307
INFORMATION TECHNOLOGY	110103
MATHEMATICS	270101
MOLECULAR BIOLOGY	260402
NUTRITION AND FOOD SCIENCE	190501
PHYSICAL EDUCATION	131314
PHYSICS	400801
SCIENCE INFORMATICS	309999
<b><i>MASTER OF ARTS</i></b>	
APPLIED LINGUISTICS	160102
CHILD ADVOCACY AND POLICY	440701
CLINICAL PSYCHOLOGY	422801
COMMUNICATION SCIENCES & DISORDERS	510201
COUNSELING	131101
EDUCATIONAL LEADERSHIP	130401
EDUCATIONAL PSYCHOLOGY	421801
ENGLISH	230101
ENVIRONMENTAL STUDIES	030103
EXERCISE SCIENCE & PHYSICAL EDUCATION	131314
FAMILY AND CHILD STUDIES	190101
FINE ARTS	500701
FRENCH	160901
HISTORY	540101
INDUSTRIAL ORGANIZATIONAL PSYCH.	422804
LAW AND GOVERNANCE	229999
MUSIC	500901
PSYCHOLOGY	420101
PUBLIC & ORGANIZATIONAL RELATIONS	090101

<b>FALL 2011 ACTIVE DEGREE PROGRAMS (cont.)</b>
---

<b>DEGREE PROGRAMS</b>	<b>CIP CODE*</b>
<b><i>MASTER OF ARTS</i></b>	
READING	131315
SPANISH	160905
TEACHING MIDDLE GRADES MATHEMATICS	131311
THEATRE	500501
<b><i>MASTER OF SCIENCE</i></b>	
ACCOUNTING	520301
AQUATIC AND COASTAL SCIENCES	309999
BIOLOGY	260101
CHEMISTRY	400501
COMPUTER SCIENCE	110101
GEOSCIENCE	400601
MATHEMATICS	270101
MOLECULAR BIOLOGY	260204
NUTRITION AND FOOD SCIENCE	190501
PHARMACEUTICAL BIOCHEMISTRY	260202
STATISTICS	270501
<b><i>MASTER OF ARTS IN TEACHING</i></b>	
TEACHING	130101
<b><i>MASTER OF BUSINESS ADMINISTRATION</i></b>	
BUSINESS ADMINISTRATION	520201
<b><i>MASTER OF EDUCATION</i></b>	
INCLUSIVE EARLY CHILDHOOD EDUCATION	131015
LEARNING DISABILITIES	131011
SPECIAL EDUCATION	131001
<b><i>MASTER OF FINE ARTS</i></b>	
STUDIO ART	500702
<b><i>MASTER OF PUBLIC HEALTH</i></b>	
PUBLIC HEALTH	512201
<b><i>DOCTOR OF EDUCATION (Ed.D.)</i></b>	
MATHEMATICS EDUCATION	131399
TEACHER EDUCATION & TEACHER DEVELOPMENT	131299
<b><i>DOCTOR OF PHILOSOPHY (Ph.D.)</i></b>	
COUNSELOR EDUCATION	139999
ENVIRONMENTAL MANAGEMENT	030201
<b><i>DOCTOR OF AUDIOLOGY (Au.D.)</i></b>	
AUDIOLOGY-CLINICAL	510202
<b><i>DOCTOR OF SCIENCE (Sc.D.)</i></b>	
AUDIOLOGY-RESEARCH	510202

*Annual Institutional Profile of Montclair State University, 2012*

In addition, the following certificates were offered at the undergraduate and/or graduate level:

Accounting, graduate  
Advanced Counseling, graduate  
American Dietetic Association, graduate  
Artist Diploma, graduate  
Certified Alcohol and Drug Counseling, graduate  
Child Advocacy, graduate and undergraduate  
CISCO, graduate and undergraduate  
Conflict Management in the Workplace, graduate  
Community Development, graduate  
Criminal Forensic Psychology, graduate  
Developmental Models of Autism Intervention, graduate  
Family/Civil Forensic Psychology, graduate  
Finance, graduate  
Food Safety Instructor, graduate  
Geographic Information Science, graduate  
International Business, graduate  
Makeup Artistry, undergraduate  
Management, graduate  
Management Information Systems, graduate  
Marketing, graduate  
Molecular Biology, graduate  
Music Therapy, graduate  
New Literacies, Digital Technologies, and Learning, graduate  
Nutrition and Exercise Science, graduate  
Object Oriented Computing, graduate  
Paralegal Studies, graduate  
Performer's Certificate, graduate  
School Counseling, graduate  
Teaching English to Speakers of Other Languages, graduate  
Teaching Middle Grades Mathematics, graduate  
Teaching Writing, graduate  
Translation and Interpretation in Spanish, graduate and undergraduate  
Water Resource Management, graduate



H. Major Research and Public Service Activities

Montclair State University serves the citizens of New Jersey and its local communities in numerous ways that are described more fully in Appendix 1, “2011-2012 Economic Impact Report.” First and foremost, the University prepares New Jersey’s youth for successful careers and socially responsible, professionally rewarding, and personally enriching lives. The University’s faculty and staff serve as a talented, professional resource to both the State and the communities in which they reside, and the University’s facilities and programming, particularly in the arts, provide cultural enrichment to residents across New Jersey.

In regards to research and external funding during the 2011-2012 academic year, faculty members continued to be actively engaged in research, scholarship, and other forms of artistic and creative expression. Montclair State faculty published over 40 books (see Appendix 2) and several hundred articles, book chapters, and reviews; faculty and students together produced exhibitions, concerts, and other performance art.

In FY11 Montclair State was awarded nearly \$8.5 million in external funding, including grants from the Department of Energy, U.S. Department of Education, the U.S. Army, the Environmental Protection Agency, National Institutes of Health, National Science Foundation, the Department of Interior, and the Department of Agriculture. Regarding specific expenditures for research and other externally sponsored programs in FY11, data gathered through the National Science Foundation (NSF) survey of research expenditures show Montclair State Research and Development (R&D) expenditures amounted to over \$3.6 million in FY11. The University expended an additional \$6.9 million for other sponsored programs during the same period for a total of nearly \$10.6 million in FY11 funded expenditures. Research expenditures from Federal sources rose over 40% from FY09, while overall research expenditures rose over 60% between FY09 and FY11.

**TABLE II.H.1: R&D Expenditures, FY11 [1]**

<b>Source of Funds</b>	<b>Amount</b>
<b>U.S. Federal Government</b>	<b>\$2,629,000</b>
<b>State and Local Government</b>	<b>\$21,000</b>
<b>Business and Non-Profit Organizations</b>	<b>\$480,000</b>
<b>Institutional Funds</b>	<b>\$491,000</b>
<b>Grand Total of Academic R&amp;D Expenditures (All Disciplines and Sources)</b>	<b>\$3,621,000</b>

[1] Source: NSF Higher Education Research and Development Survey, FY09 to FY11.

Expenditures on Other Sponsored Programs, FY11	
Source of Funds	Amount
U.S. Federal Government	\$2,054,000
State and Local Government	\$3,518,800
Business and Non-Profit Organizations	\$1,251,163
Institutional Funds	\$120,925
<b>Total of Expenditures on Sponsored Programs Other Than Research</b>	<b>\$6,944,888</b>
<b>Grand Total of Expenditures on R&amp;D and Other Sponsored Programs</b>	<b>\$10,565,888</b>

Montclair State University has enjoyed great success in recruiting and retaining outstanding faculty. The University's 569 full-time faculty members, and all those who support them in part-time instructional roles, represent the heart and soul of the institution. Without them, none of the excellent outcomes described above could be achieved.

Appendix 2 of this report is a brochure titled "University Authors, 2012," which describes books published by Montclair State University faculty during the past year. The following section of this report augments that brochure by providing more details of faculty activities and accomplishments during the 2011-2012 academic year.

Selected Montclair State University Faculty Accomplishments

**School of Business**

**Books**

**DiGabriele, James A.**

Filler, M. G., DiGabriele, J. (2012). *A Quantitative Approach to Commercial Damages. Applying Statistics to the Measurement of Lost Profits* (1st ed., vol. 1). Hoboken, New Jersey: John Wiley & Sons.

**Peer-Reviewed Journals**

**Aquilino, Frank J.**

**Aquilino, F., Jeffers, A.** (2012). Did The Economic Stimulus Act Really Stimulate The Economy? *Academy of Business Research Journal*, 1(2012), 61-74.

**Aquilino, F., Jeffers, A.** (2011). Are Tax Incentive Programs Really Beneficial To The Economy? *Review of Business Research (RBR)*, 11(3), 33-43.

**Carpano, Claudio**

Carpano, C., Filatov, V. (in press). Corporate Raiding and Institutional Void in Russia. *To appear in Journal of Current Research in Global Business.*

**Chen, Qiyang**

Chen, Q., Wang, J., Hsu, J. (2011). Managing Uncertainties in User Modeling Systems. *International Journal of Data Analysis and Information Systems*, 3(2).

**DiGabriele, James A.**

DiGabriele, J. (2012). The Moderating Valuation Effects of the Organizational Form of Flow Through Entities. *Journal of Business Valuation and Economic Loss Analysis*, 7(1), 1-23.

DiGabriele, J. (2012). A Narrative Inquiry of the Inchoate Ethical Risks of Forensic Accounting Experts under Amended Rule 26 Communications. *Ethics & Critical Thinking Journal*, 2012(1), 1-14.

DiGabriele, J. (2012). A Query on Related and Unrelated Mergers & Acquisitions and the Impending Inference on Private Company Pricing. *Business Journal for Entrepreneurs*, 2012(1), 40-56.

DiGabriele, J. (2011). An Observation of Differences in the Transparent Objectivity of Forensic Accounting Expert Witnesses. *Journal of Forensic & Investigative Accounting*, 3(2), 390-416.

**Jayachandran, C.**

Subramanian, R., Jayachandran, C. (2011). The Evolution of Research and development in the Pharmaceutical Industry: Toward an Open Innovation Model -- Can Pharma Reinvent Itself? *International Journal of Business Innovation and Research*, 5(1), 63-74.

**Jeffers, Agatha E.**

Jeffers, A., DeGaetano, L. (2012). Impact of Sustainability Issues on Corporate Financial Reporting & Ethical Behavior. *Journal of Applied Financial Research*, 1(2012), 83-96.

Aquilino, F., Jeffers, A. (2012). Did The Economic Stimulus Act Really Stimulate The Economy? *Academy of Business Research Journal*, 1(2012), 61-74.

Jeffers, A. (2011). How Lehman Brothers Used Repo 105 to Manipulate Their Financial Statements. *Journal of Leadership, Accountability and Ethics (JLAE)*, 8(5), 44-55.

Aquilino, F., Jeffers, A. (2011). Are Tax Incentive Programs Really Beneficial To The Economy? *Review of Business Research (RBR)*, 11(3), 33-43.

Jeffers, A. (2011). Lehman Brothers - The Thin Line Between Aggressive Accounting & Unethical Behavior. *European Journal of Management (EJM)*, 11(4), 93-101.

Jeffers, A., DeGaetano, L. (2011). The Relationship Between Sustainability Initiatives and The Corporation's Bottom Line. *Journal of International Management Studies (JIMS)*, 11(2), 12-21.

**Kessler, Stacey**

Bruursema, K., Kessler, S., Spector, P. (2011). Employee responses to boredom: A neglected job characteristic and emotion in organizational research. *Work and Stress*, 25, 93-107.

**Kim, Sang-Hoon**

Kim, S.-H. (2011). Interest Rate Risk of Bond Investment. *Journal of International Business and Economics*, 11(3), 123-127.

**Kumar, Archana**

Kumar, A., Fairhurst, A., Kim, Y.-K. (2011). Ethnocentric Tendencies of Indian Consumers: Impact on Preference for Domestic versus Foreign Products. *International Review of Retail, Distribution and Consumer Research*, 21(4), 323-341.

**Kleinman, Gary**

Kleinman, G., Anandarajan, A. (2011). The Impact of Cognitive Biases on Fraudulent Behavior: The Leeson Case. *The International Journal of Behavioral Accounting and Finance*, 2(1), 40-55.

**Limbu, Yam B.**

Limbu, Y., Huhmann, B. A., Peterson, R. T. (2012). An examination of humor and endorser effects on consumers' responses to direct-to-consumer advertising: The moderating role of product involvement. *International Journal of Pharmaceutical and Healthcare Marketing*, 6(1), 23-38.

Xu, B., Peterson, R. T., Hampton, G. M., Limbu, Y. (2011). Dissimilar New Product Pace: Product Contingency Effects. *Marketing Management Journal*, 21(1), 140-151.

**Lin, Beixin**

Pinto, J., Lin, B., Lipari, J. (2012). Financial Statement Analysis: A few Considerations from Multinational Corporations. *Today's CPA*, 39(5), 30-36.

**Lipari, Joseph**

Pinto, J., Lin, B., Lipari, J. (2012). Financial Statement Analysis: A few Considerations from Multinational Corporations. *Today's CPA*, 39(5), 30-36.

**Meziani, A. Seddik**

Meziani, A. Seddik (2011). Assessing the Benefits of U.S. Micro-Cap Holdings and International Small-Cap Stocks within a Core-Satellite Investment Strategy. *Journal of International Business Management & Research – JIBMR*, Volume 2(Issue 5), 27 pages.

**Misra, Ram B.**

Misra, R., Sharma, R. R. K., Kakkar, H. (2011). A CASE BASED STUDY OF THE RELATIONSHIP BETWEEN INNOVATION AND ORGANIZATIONAL STRUCTURE AND ARCHITECTURE. *International Academy of Business and Economics, LABE®*, 11(4).

**Mukherjee, Avinandan**

Mukherjee, A. (2011). From local to global healthcare marketing research: A broad-spectrum perspective. *International Journal of Pharmaceutical and Healthcare Marketing*, 5(3), 172-174.

Mukherjee, A. (2011). Half a decade of IJPHM and continuing new ideas in the business of healthcare. *International Journal of Pharmaceutical and Healthcare Marketing*, 5(4).

Mukherjee, A. (2011). Not by survey only: Alternate methodologies in healthcare marketing research. *International Journal of Pharmaceutical and Healthcare Marketing*, 5(1), 5-7.

Mukherjee, A. (2011). The healthcare research agenda: Rigor and relevance. *International Journal of Pharmaceutical and Healthcare Marketing*, 5(2), 76-78.

**Peterson Ph.D., Richard**

Wang, J., Peterson, R. (2012). Project Management Techniques and Innovations in International Technology. *International Journal of Information Technology Project Management*, 2(1), 1-18.

Hajer, K., MKlaiki, A., Peterson, R. (2011). IT Offshoring: Views from Client and Vendor Perspectives. *International Journal of Information Technology Project Management*, 2(4), 26-43.

**Pinto, Joann**

Pinto, J., Lin, B., Lipari, J. (2012). Financial Statement Analysis: A few Considerations from Multinational Corporations. *Today's CPA*, 39(5), 30-36.

**Pirouz, Kamrouz**

Pirouz, K. (2012). Iran's oil nationalization issue & the World Bank proposal. *European Journal of Business Research (EJBR)*(EJBR 12-2-2012), 9.

Pirouz, K., Rezvani, F. (2011). Iran's Regional Economic Alliance: an Evaluation. *Journal of International Finance & Economics*, 11(No. 2, 2011).

**Poon, Wing W.**

Poon, W. (2012). Incorporating IFRS into the U.S. Financial Reporting System. *Journal of Business & Economics Research*, 10(5), 303 - 311.

**Rawlins, Glenville**

Rawlins, G. (2012). Do Currency Depreciations Impact the Trade Balance? The Experience of South Africa. *Journal of International Finance Studies*, 12(2).

Rawlins, G. (2011). Currency Depreciations and the Trade Balance: The Case of Sub-Saharan Africa. *Journal of American Business and Economics*, 12(6), pp 132-148.

**Rezvani, Farahmand**

Pirouze, K., Rezvani, F. (2011). Iran's Regional Economic Alliance: an Evaluation. *Journal of International Finance & Economics*, 11(No. 2, 2011).

**Ricci, Cecilia W.**

Ricci, C. (2011). Manipulating Receivables: A Comparison Using the SEC's Accounting and Auditing Enforcement Releases. *Journal of Applied Business and Economics*, 12(5), 35-44.

**Romero, Silvia**

Vasarhelyi, M. A., Romero, S., Kuenkaikaew, S., Little, J. (2012). Adopting Continuous Audit / Continuous Monitoring in Internal Audit. *ISACA Journal*, 3.

Alali, F., Romero, S. (2012). Auditor Changes Before, During and Post-Section 203 of Sarbanes-Oxley Act. *Internal Auditing*, 27(1), 25-30.

Fernandez-Feijoo, B., Romero, S., Ruiz-Blanco, S. (2011). Information systems for sustainability: Hofstede's cultural differences in the perception of quality measure of sustainability reports. *Enterprise information systems-Communications in Computer and Information Science*, 219(1), 54-62.

**Subramanian, Ramachandran**

Subramanian, R. (2011). "Do Technology Alliances Create More Value Than Marketing Alliances?". *International Journal of Business Excellence*, 4(2), 178-190.

Subramanian, R., Jayachandran, C. (2011). The Evolution of Research and development in the Pharmaceutical Industry: Toward an Open Innovation Model -- Can Pharma Reinvent Itself? *International Journal of Business Innovation and Research*, 5(1), 63-74.

**Wang, John**

Yan, R., Wang, J., Zhou, B., Gou, P. (2012). Is Information Sharing Profitable in E-business Age? *International Journal of Applied Decision Sciences*, 5(1), 1-10.

Wang, J., Peterson, R. (2012). Project Management Techniques and Innovations in International Technology. *International Journal of Information Technology Project Management*, 2(1), 1-18.

Wang, J., Zhou, B., Hsu, J., Xing, R. (2011). Applications of Data Mining in Pharmaceutical Industry. *The Journal of Management and Engineering Integration*, 4(1), 120-128.

Zhou, B., Wang, J., Yan, R. (2011). Analysis of a Dual-Source Production-Inventory Problem with Quantity Constraints. *International Journal of Applied Decision Sciences*, 4(1), 1-15.

Wang, J., Yan, R., Guo, P. (2011). Comparative Analysis of International Healthcare Systems. *International Journal Business and Systems Research*, 5(1), 85-103.

Wang, J., Yan, R. (2011). Data Decoding in Drug Discovery and Development. *International Journal of Decisions Science*, 2(2), 93-107.

Hsu, J., Wang, J., Hamilton, K. (2011). Developing and Managing Digital/Technology Literacy and Effective Learning Skills in Adult Learns. *Int. J. of Digital Literacy and Digital Competence*, 2(1), 52-70.

Chen, Q., Wang, J., Hsu, J. (2011). Managing Uncertainties in User Modeling Systems. *International Journal of Data Analysis and Information Systems*, 3(2).

Yao, J., Wang, J., Hsu, J. (2011). Strategic Pioneering Challenges of an E-titan: Promise and Peril. *Journal of Management and Engineering Integration*, 4(2), 119-128.

**Wang, Yawei**

Jensen, R., Bowman, N., Wang, Y., Larson, B. (2012). New League, New Market, New Sponsorship: An Exploratory Study of Attitudes towards Shirt Sponsorship in Major League Soccer. *Soccer and Society*, 13(3).

**Xing, Ruben**

Wang, J., Zhou, B., Hsu, J., Xing, R. (2011). Applications of Data Mining in Pharmaceutical Industry. *The Journal of Management and Engineering Integration*, 4(1), 120-128.

**Yang, James G.S.**

Yang, J. (2012). The Principles of Nexus in E-Commerce Tax. *International Journal of E-Business Research*, Volume 8(Issue 2), pages 33-48, April-June 2012.

Yang, J. (2012). Whether and How E-Business Should be Taxed. *Journal of Contemporary Business Issues*, 18(1), 37-57.

Yang, J. (2011). What is New York's Amazon Tax on Internet Commerce? *International Journal of E-Business Research*, 7(4), 50-61.

**Yao, James E.**

Yao, J., Wang, J., Hsu, J. (2011). Strategic Pioneering Challenges of an E-titan: Promise and Peril. *Journal of Management and Engineering Integration*, 4(2), 119-128.

**Yu, Susana**

Yu, S., Leistikow, D. (2011). Abnormal Stock Returns, for the Event Firm and its Rivals, Following the Event Firm's Large One-day Stock Price Drop. *Managerial Finance*, 37(2), 151-172.

Yu, S. (2011). Pairs-trading on Divergent Analyst Recommendations. *Journal of Investment Management*, 9(4), 75-95.

Yu, S. (2011). The Changing Nature of Corporate Distributions and Its Implications for Investors. *The American Economist*, 56(1), 89-103.

**Zey, Michael**

Zey, M. (2011). VIRTUAL MENTORING: THE CHALLENGES AND OPPORTUNITES OF ELECTRONICALLY-MEDIATED FORMAL MENTOR PROGRAMS. *Review of Business Research International Academy of Business Economics*, 11(5), 14.

**Zhang, Yanli**

Zhang, Y. (in press). CITIC Pacific: Mining for Iron in Australia. *To appear in Thunderbird International Business Review*.



## College of Humanities and Social Sciences

### Books

Andrea Dini and Christopher Kleinhenz (eds.), *Approaches to Teaching Petrarch's Canzoniere and The Petrarchan Tradition*. New York: The Modern Language Association of America, 2012.

David Galef, *My Date with Neanderthal Woman*. Westland, MI: Dzanc Books, 2011.

Elizabeth Emery and C.J.T. Talar (eds.), *The Modernist as Philosopher. Selected Writings of Marcel Hébert*. Washington, DC: Catholic University of America Press, 2011.

Elizabeth Emery and Richard Utz (eds.), *Cahiers Calin. Essays in Honor of William Calin*. Kalamazoo, MI: Studies in Medievalism, 2011.

Esperanza Brizuela-Garcia, *African Historie.: New Sources and Techniques for Studying African Pasts*. Prentice Hall, 2011.

Lois Oppenheim, *Imagination: From Fantasy to Delusion*. New York & London: Routledge, 2012.

Monica Elbert and Bridget Marshall (eds.), *Transnational Gothic: Literary and Social Exchanges in the Long Nineteenth Century*. Ashgate, 2012,

Negan Nabavi, (ed.) *Iran: From Theocracy to the Green Movement*. Palgrave Macmillan, 2012.

Patricia Salzman and Lauren Peterson (eds.) *Mothering and Mothers in Greece and Rome*. University of Texas Press, 2012.

Peter Pastor and Graydon Tunstall (eds.) *Essays on World War I*. Boulder, CO: East European Monographs, 2012, distr. by Columbia University Press.

Redouane, Rabia. (ed.), *Regards croisés sur l'enseignement des langues étrangères*. **Paris**, L'Harmattan, 2011

Siegel, Peter E., and Elizabeth Righter (eds.) *Protecting Heritage in the Caribbean*. University of Alabama Press, 2011.

## College of the Arts

### **Allen, Michael**

Directed the New Jersey premiere staged reading of *8* on Saturday, March 24, at 7:30 p.m. at Memorial Auditorium. This powerful play is about the federal court trial contesting the Proposition 8 voter ban in 2008 on same sex marriage in California.

**Barnet, Peter** had a two-person exhibition, "Barnet/Segal: It Runs in the Family," at the George Segal Gallery, March 6-April 14, 2012.

**Bebout, Catherine** had a solo exhibition, "Mapping the Body," at the Ruth S. Harley University Center Gallery, Adelphi University, Garden City, NY, December 6, 2011-January 8, 2012, and group exhibitions, "Fusion-International Contemporary Intaglio Print Invitation Exhibition," at Guanlan Original Printmaking Base, Shenzhen, China, 2012, "Paper View 2012" Czech Center Gala for Manhattan Graphics Center, at the Bohemian National Hall, NYC, April 2012, "Multiple Encounters 2<sup>nd</sup> Edition," at Lalit Kala Akademi, New Delhi, India, January 2012, and "Bebout, Johnson, Welden: Mixed Media Prints," at Jeanie Tengelsen Gallery, Art League of Long Island, Dix Hills, NY, March 24-April 29, 2012. She co-curated with Karen Oremus (Sayed University, UAE), "Cartographies: Mapping Intersections and Counterpoint," an exhibition in conjunction with the Impact 7 Conference 2011 on international printmaking, sponsored by the University of West England, Bristol, UK. Prof. Bebout gave lectures/workshops at Dowling College, Islip, Long Island, NY, at Adelphi University, Garden City, NY, and at Manhattan Graphics, NYC, all in 2011. She served as an external assessor and consultant at Whitecliffe College of Arts & Design, New Zealand and was a guest lecturer in their MFA program. She also served as a board member for Friends of Fulbright India, NYC, organized a reception for incoming Fulbright recipients at the Bose Pacia Gallery, NYC, and facilitated networking opportunities for Fulbright Scholars from India who are conducting research projects in the US.

**Buchanan, Heather** was in residence at Berklee College of Music in Boston in April, 2012. She presented a variety of Body Mapping workshops and lectures as part of their Performance Wellness Institute.

**Cart, Robert** new edition of Richard Wagner's Wesendonck Lieder and Trois Mélodies, accompanied by his compact disc these songs, was published in March 2012 by Music Minus One.

### **James, Clay**

Professor Clay James, Coordinator of the B.F.A. Musical Theatre program recently served as a Contributing Specialist in Musical Theatre for Fudan University, Shanghai Institute of Visual Arts, College of the Performing Arts in Shanghai, China from May 5th - July 4th, 2012. Working with 50 students from the Acting program, Professor James taught musical theatre performance technique as well as structured, directed and choreographed a fully produced, 90 minute production featuring 40 songs from a repertoire of past and present Broadway shows. Due to the enormous success of the performance, the contribution of Professor James' work to their College of Performing Arts and an eye towards the future, Fudan University - Shanghai Institute of the Arts will be establishing a continuing relationship and student exchange program with Montclair State University, College of the Arts through our Global Education Program during the coming academic year.

### **Curnutt, Hugh**

Flashing your phone: Sexting and the remediation of teenage sexuality. *Communication Quarterly*, 60(3), 353-369. Curnutt, H. P. (2011). Durable participants: A generational approach to reality TV's 'ordinary' labor pool. *Media, Culture & Society*, 33(7), 1061-1076.

--(2011, November). *Durable participants: A generational approach to reality TV's 'ordinary' labor pool*. To be presented at the 97th annual conference of the National Communication Association, Critical and Cultural Studies Division, New Orleans, LA.

**Drummond, Dean** directed and played harmonic canons in a performance of Harry Partch's *Daphne of the Dunes* at Zankel Hall in New York City.

**DeLorenzo, Lisa** published her book, *Sketches In Democracy: Notes From An Urban Classroom* (Rowman & Littlefield) in February. Her article, "Missing Faces in the Orchestra: An Issue of Social Justice?" appears in *Music Educators Journal* (June 2012). During the 2011-2012 academic year, Dr. DeLorenzo presented at the National Network for Educational Renewal conference and the New Jersey Music Educators Association conference.

**Feigler, Denis** gave a workshop, "Design for Brand Identity," at Moholy-Nagy University, Budapest, Hungary, March 2012.

**Foti, Eileen** had group exhibitions, "Coming of Age: 21 Years of Artist Proof Studio," at Johannesburg Art Gallery, South Africa, May 2012, and "Metal as a Medium," at Riverside Gallery, Hackensack, NJ, June 15-27, 2012. She was a panelist at the 17<sup>th</sup> Annual New Jersey Book Arts Symposium, "Money: Currency, Value and Exchange," at Paul Robeson Galleries, Rutgers University, Newark, NJ, November 4-5, 2011, and a presenter at the Alliance for Arts & Health New Jersey (AAH NJ) Conference, "Arts & Health: Connecting Across the Life Span," at Montclair State University, Montclair, NJ, June 2012. Prof. Foti gave two workshops at the Creative Arts Workshop, New Haven, CT: "Tangible Surfaces," February 2012, and "Chipboard Relief Prints," June 23-24, 2012. Her documentary film, "A Ripple in the Water: Healing Through Art," which she wrote and co-produced with Patty Piroh (Broadcasting), was screened at the Long Beach Island Institute for the Arts and Sciences, NJ, August 2011. She is currently assembling a contemporary art collection (\$100,000 budget) for the Institute for Health, Health Care Policy, and Aging Research's new building at Rutgers University, New Brunswick, NJ.

**Goldring, Nancy** published five articles in PresS.IT (Publication of the Italian International Association of Criticism), an article in *The Brooklyn Rail*, August 2011, and an article in *The Architect's Newspaper*, March 2012. She served as a finalist juror in the 2011 International Design Competition for Emergency Stations, "Outside the Box: Low and High Technologies for the Emergencies," and gave lectures at the International Association of Architecture, Casa dell'Architettura, Rome, April 2012, and at the New York Institute of Architecture, May 2012. Prof. Goldring had a solo exhibition, "Vanishing Points (Punti di Fuga)," at the Monitor Space, Casa dell'Architettura, Rome, April 2012, with an accompanying catalog, and group exhibitions, "From Life," at the Radiator Gallery, Long Island City, NY, April 2012, "Classical Mythology in Modern and Contemporary Art," at the Benton Museum, CT, January 17-March 11, 2012, and "Jüdische Frauen in der Bildenden Kunst," at Inselgalerie, Berlin, November 2011. Her work was reviewed in *Manifesto*, "Review of Vanishing Points: Nancy Goldring," by Massimiliano Tomba, May 2012, and in *Hyperallergic*, "Forms of Life: Breathing New Life into Traditional Genres," by Patrick Neal, April 19, 2012.

**Goodman, Karen** presented two invitational addresses this spring: 1) "Inaugural Lecture: Processes in Music Therapy," Haredi College of Jerusalem, Jerusalem, Israel; 2) "Internalization of Theory to Practice," Bar Ilan University, Ramat Gan, Israel.

**Haines, Harry**

Published the lead essay, "Soldiers Against the Vietnam War: *Aboveground* and *The Ally*," in Part 2 of the definitive four volume collection titled *Insider Histories of the Vietnam Underground Press*, edited by Ken Wachsberger and published by Michigan State University Press.

**Hameide, Kaled** presented the paper, "Future of Branding in an Environment of Mass Customization and Open Sourcing," at the LCBR European Marketing Conference 2011, Frankfurt, Germany, July 7-8, 2011, and received a \$1100 travel grant from Global Education for the conference. His paper, "Microbranding and the Impact of Technology on the Future of the Brand," was presented at the World Conference on Management, Economics, Business & Entrepreneurship (Virtual Conference), June 28-30, 2012. His paper, "System Dynamics Modeling and the Diffusion of Products: A Marketing Perspective," co-authored with Prof. Tarek Abdelhamid, was accepted for presentation at the 12th International Conference on Knowledge, Culture, and Change in Organizations, to be held at University Center, Chicago, IL, July 6-8, 2012. Prof. Hameide was invited to join the committee for the International Conference of Innovation and Entrepreneurship, and continued to serve as a committee member and reviewer for the European Conference on Innovation and Entrepreneurship. He was also invited for the second year by European publisher Laurence King Publishing to review new fashion book proposals.

**Heffernan, Julie** had solo exhibitions, "Julie Heffernan: Infinite Work in Progress," at the Oklahoma City Museum of Art, Oklahoma City, OK, February 16-May 27, 2012, and "Boy O Boy II," at Catharine Clark Gallery, San Francisco, CA, September 3-October 29, 2011. She had group exhibitions, "Women's Work," at the National Academy Museum, New York, NY, May 23-August 26, 2012; "Twisted Sisters," at Kristen Dodge Gallery, New York, NY, May 19-June 24, 2012; "The Perfect Storm," at Julie Saul Gallery, New York, NY, June 28-August 17, 2012; and "The Calendar's Tales: Fantasy, Figuration and Representation," at 808 Gallery, School of Visual Arts, Boston University, Boston, MA, February 2-March 31, 2012. Prof. Heffernan served as a juror for the "Young Contemporaries" show, Halsey Institute of Contemporary Art in conjunction with the College of Charleston Visual Arts Club, Charleston, SC, March, 17-18, 2012, and taught a Master Class at the New York Academy of Art, New York, NY, November 5-6, 2011. She also gave lectures at Frey Norris Contemporary & Modern, San Francisco, CA, January 18-19, 2012, at East Tennessee State University, Johnson City, TN, October 2011, and at Vermont Studio Center, Johnson, VT, August 8, 2011.

**Kelshaw, Todd.** (2012, April 14). The Value of Humility in Campus-Community Encounters. In E. Novek (Chair), Communication Activism. Panel presented at the annual conference of the New Jersey Communication Association, Monmouth University, West Long Branch, NJ.  
--(2012, April 26). Chair: Applied Communication in Entertainment Contexts. Panel presented at the annual conference of the Eastern Communication Association, Cambridge, MA.  
--(2012, April 27). Respondent: Continuity and Change in Organizational and Larger Societal Contexts. Panel presented at the annual conference of the Eastern Communication Association, Cambridge, MA.

--(2012, March 30). The semantic web, crowds, and collective action. Presented at *It's a small world: The impact of global communication in the 21<sup>st</sup> century* (Montclair State University's Institute for the Humanities). Montclair, NJ.

**Kerner, Susan**

Directing: *Text of Sex* at American Academy of Dramatic Arts, a world premiere by Michele Aldin Kushner

Reading of *Rachel Ray*, Anthony Trollope novel adapted for the stage by Henry Onge at Anthony Trollope Society, NYC

Readings at Luna Stage: *Francoise* by Suzanne Trauth, *Pront and Adam* by Peter Filichia, *Text of Sex* by Michele Aldin Kushner

Teaching: Essential Spoken English for Instructors, Qingdao Technological University, Shandong Province, China

**Koning, Wobbe** collaborated with Miho Aoki from the University of Alaska, Fairbanks, on a survey of faculty teaching in programs where courses in 3D computer graphics and animation are offered in the United States. They then compared that data with the situation in Japan to assess similarities and differences, and presented their findings at the Computer Graphics Conference – SIGGRAPH ASIA 2011 – in Hong Kong. The abstract was published in the Association for Computing Machinery's (ACM) Digital Library. Two of Prof. Koning's digital images were accepted in the ACM Digital Arts Community juried online exhibition, "Environments – Natural – Constructed," which went live on May 22, 2012 at <http://arts.siggraph.org/environment/>. Prof. Koning was also featured in MSU's OIT Faculty Spotlight where he shared his experience with using blogs as digital workshops.

**Lam, Ken** gave clinics and masterclasses for the Hong Kong Scout Orchestra (Hong Kong), Clayton Valley High School (CA), Hereford High School (MD), John P Stevens High School (NJ) and music teachers of Howard Country Public Schools (MD), judged competitions at Towson University (MD), New Jersey Youth Symphony, Chesapeake Youth Symphony Orchestra and guest conducted the Illinois Symphony Orchestra and the Kentucky Music Educators Association's Inter-Collegiate Orchestra.

**Lay, Pat** had a two-person exhibition, "Pat Lay and Michelle Loughlin," at Woolpunk Studios, Jersey City, NJ, 2012, a national juried group exhibition, "Momentum," at the National Women's Caucus for Art, Los Angeles, CA, 2012, and a group exhibition, "mic: check (The: human mic) 489 artists: 520 works," at Sideshow Gallery, Brooklyn, NY, February 26-March 18, 2012. She was a panelist with guest artists Jason Krugman, {dNASAb}, and Nurit Bar-Shai at "A Salon on Art & Technology," moderated by John Ensor Parker at the Eugene Lang College, The New School, NYC, 2011. Photographs of Prof. Lay's work were included in Susan and Jan Peterson, *The Craft and Art of Clay*, 5<sup>th</sup> Edition, Laurence King Publishing, London, 2012.

**Lillethun, Abby** published "Review of *Yves Saint Laurent*, Exhibition and Catalogue, Florence Müller and Farid Chenoune, eds and curators, exhibition at the Petit Palais, Musée des Beaux Arts de la Ville de Paris," *DRESS*, and an invited paper, "(Re)Defining Fashion," with Linda Welters and Joanne B. Eicher, *DRESS*. Her conference presentation (with abstract), "Toward a History of World Dress," with Linda Welters, was published in the *Proceedings of the Annual*

*Conference of the International Textiles and Apparel Association, November 2-5, 2011, Philadelphia, PA.* Prof. Lillethun served as a board member of the Costume Society of America, Mid-Atlantic Region, was a member of their Millia Davenport Publication Award Committee, and was installed June 2, 2012 as a member of their National Board of Directors, Class of 2015. She also served as research submissions adjudicator for the annual meeting of the International Textile and Apparel Association to be held November 2012, served on the editorial board of the *Journal of Fashion, Style, and Popular Culture*, and gave the presentation, "Fashion Design: Drawing from the Past," at MSU's Humanities in the Schools Day, Old Made New-Dialoguing with the Past, December 2, 2011. Prof Lillethun was interviewed for the articles, "Why It's So Difficult for Women to Find the Right Clothing Size," Erinn Connor, *The Record*, April 11, 2012; "On 'Mad Men,' Fashion History Unfolds as Characters Evolve," Erinn Connor, *The Record*, March 31, 2012; and "Louis Vuitton," Clay Latimer, Leaders & Success section, *Investor's Business Daily* (in press). She continues as a Faculty Mentor for the MSU Fashion Club, and received a \$2200 Global Education travel grant to Whitecliff College for the Arts, Auckland, New Zealand.

**Luttropp, John** was appointed onto the Board of Trustees of the Art Directors Club of New Jersey and served on the ADCNJ Education Committee. He completed a three-year term as Faculty Representative to the MSU Board of Trustees. He was a reviewer for the book, *Graphic Design History: A Critical Guide*, 2<sup>nd</sup> Edition, by Johanna Drucker and Emily McVarish, Prentice Hall, March 2012.

**Luo, Yi**

(2012). Demystifying social media use and public relations practice in China. In S. Duhé (Ed.) *New media and public relations* (pp. 145-153). New York: Peter Lang.

Zhang, A., Jiang, H., & **Luo, Y.** (2012). Contemporary Chinese public relations education: Development and challenges. *Asian Journal of Communication*, 22, 1-19.

Zhang, A., **Luo, Y.**, & Jiang, H. (2011). An inside-out exploration of Chinese public relations education. *Journal of Public Relations Review*, 37, 513-521.

**McPherson, Elizabeth Ph.D.** (B.A. Dance Education)

Received an American Fellowship/Short Term publication Award to work on her book-in-progress on the Bennington School of the Dance for the summer of 2011. She presented papers related to her research at the National Dance Education Organization 2011 conference (Minneapolis) in October, the Congress on Research in Dance 2011 conference (Philadelphia) in November, and the Society of Dance History Scholars 2012 conference (Philadelphia) in June. Working with Laurie Abramson they worked for the New Jersey Department of Education designing model dance curriculum, creating assessments, and adjudicating dance students in vocational high schools through the winter and spring of 2012.

**Mugleston, Randy M.F.A** (Chair)

Lighting Designer *Children of Eden*, Roche Player, Nutley, NJ

Lighting Designer Dance Division Raritan Valley Community College

**Otte, Debra M.F.A** (Production and Design)

National Selection Committee, Kennedy Center American College Theatre Festival

Costume Designer *Burt Dow*, *Deep Water Man*, Stonington Opera Arts

**Pemberton, Anthony** (Associate Professor, Filmmaking) served as a juror on the Kidz Shortz short film competition sponsored by the Montclair International Film Festival, January 2012, and was a panelist judge for the Princess Grace Foundation, judging films nominated from elite film schools around the country.

**Penney, Joel**

Presented peer-reviewed conference paper: "Citizen-Advertisers: Promotional Culture, 'Mediatized' Commodity Displays, and Political Action." International Communication Association (ICA), Phoenix, AZ, May 26, 2012. Presented peer-reviewed conference paper: "Visible Identities, Visual Rhetoric: The Self-Labeled Body as a Medium for Political Persuasion." National Communication Association (NCA), New Orleans, LA, November 16-20, 2011.

Presented peer-reviewed conference paper: "Theorizing Connections between Embodied Political Expression and the Dialogical Public Sphere: Some Concluding Notes from a Dissertation on Political T-Shirts." NCA Pre-Conference Seminar: "Seeing Voices: Embodiment and the Public Sphere," New Orleans, LA, November 16, 2011.

**Rom, Erhard**

Set Designer *Nixon in China*, San Francisco Opera.  
Set Designer *Romeo and Juliet*, Florida Grand Opera  
Set Designer *The Inspector*, Boston Lyric Opera  
Set Designer, *Don Giovanni*, Wolf Trap Opera

**Saivetz, Debbie Ph.D.** (B.A. Theatre Studies)

Director, *Euridice (Eurydice)* by Sarah Ruhl, Railway Museum of Southern Mexico, Oaxaca, MEXICO, August-September, 2012.

Director, *Rebanadas de Vida (Slices of Life)* by Verónica Musalem, Lab Trece, Mexico City, MEXICO, July-August, 2012.

Director, "The Sneeze" by Anton Chekhov, benefit performance for the Montclair Fund for Educational Excellence (MFEE), Fox Theatre, MSU, June 2012.

Director, *Memorama* by Mario Cantú Toscano, U.S./Mexico Playwright Exchange, Lark Play Development Center, NYC, November 2011.

**Schnitzer, Klaus** (Professor, Photography) had a solo exhibition/retrospective of his automotive photography, "Klaus Schnitzer: Auto Focus," at the Saratoga Automobile Museum, Saratoga Springs, NY, October 1, 2011-May 18, 2012, and a group exhibition, "Polaroid [Im]Possible: The Westlicht Collection," at the Westlicht Museum of Photography, Vienna, 2011, with a catalog by Hatje Cantz. Prof. Schnitzer also contributed research and photography to the book, *Porsche: Origin of the Species*, by Karl Ludvigsen, November 2011, Bentley Publishers, and published over a dozen automotive articles and photo essays on various topics ranging from the Jeff Koons Art Car to a rare 1937/39 BMW 328 Mille Miglia race car (aka 'Bügel falte').

**Silverman, Marissa** (Assistant Professor, Music Education) was awarded a Fulbright Specialists Grant, Sibelius Academy, Helsinki Finland. In 2012 she published an article, Music and homeschooled youth: A case study. *Research Studies in Music Education*. 33(2): 179-195, and two

book chapters written with David J. Elliott: Why music matters: Philosophical and cultural foundations. In Raymond MacDonald, Gunter Kreutz & Laura Mitchell (Eds.), *Music, Health and Wellbeing* (Oxford: Oxford University Press) and Rethinking philosophy, re-viewing musical experience. In Wayne Bowman & Ana Lucia Frega (Eds.), *The Oxford Handbook of Music Education Philosophy*. (New York: Oxford University Press.)

**Trauth, Suzanne M.F.A** (B.F.A. Acting)

Co-edited Katrina anthology: *Katrina on Stage: Five Plays* (Northwestern University Press, 2011)

Directed a staged reading of the Katrina anthology for Playwrights Theatre of New Jersey

Wrote the play *Françoise* which received a staged reading at Luna Stage

Co-wrote the play *iDream*, funded by the National Science Foundation's STEM initiative which received staged readings at Premiere Stages in NJ and at an NSF conference in Washington, D.C.

Wrote and directed the short film *Jigsaw* (2012)

Developed and implemented a new curriculum for the BFA Acting Program

Co-created the touring company: Theatre on the Move and directed *Tuesdays* to tour

**Valdez del Alamo, Elizabeth** (Professor, Art History) presented a paper, "La rueda de la tumba de Pedro I como diagrama mnemotécnico" (The Wheel of Fortune Rose on the Tomb of Pedro I of Portugal as a Mnemonic Diagram), at the Congresso Internacional "Pedro e Inês: O Futuro do Passado," in Alcobaça, Portugal, March 25-31, 2012.

**Weinshenker, Anne Betty** (Professor, Art History) was granted the Bibliographical Society of America's ASECS Fellowship for Bibliographical Studies in the Eighteenth Century (to begin May 2012) for a study of the extant copies of a set of engravings known as the "Tombeaux des princes." Prof. Weinshenker presented a paper on that subject, "Collected Remembrances of the 'Worthies': McSwiny's Publication," at the annual meeting of the American Society for Eighteenth Century Studies, San Antonio, TX, March 22-25, 2012.

**Witten, David** (Professor, Piano) was an adjudicator at the Mieczysław Munz Piano Competition at Juilliard School of Music. His concerts this spring included recitals in Leshowitz Recital Hall (March 25), and Middle Tennessee State University (March 27), followed by a Piano Master Class for the local piano students. On April 24, he presented Cali School piano students in an evening concert at Steinway Hall in New York City.

## College of Science and Mathematics

### FACULTY PUBLICATIONS:

Achuthan, S., Chung, B.J., Ghosh, P., Rangachari, V. and **Vaidya, A.** (2011). "A Modified Stokes-Einstein's Equation for A-beta Aggregation, BMC Bioinformatics, 12 (Suppl 10):S13, 1-13.

Andra, S., R. Datta, R. Reddy, S. Saminathan and **D. Sarkar** (2011). "Antioxidant enzymes response in vetiver grass: A greenhouse study for chelant-assisted phytoremediation of lead-contaminated residential soils." *CLEAN – Soil, Air, Water*, 39, pp. 428-436.



Andra, S., **D. Sarkar**, S. Saminathan and R. Datta (2011). "Exchangeable lead from prediction models relates to vetiver lead in different soil types." *Environmental Monitoring and Assessment*, Online, DOI:10.1007/s10661-011-1941-x).

Andra, S., **D. Sarkar**, S. Saminathan and R. Datta (2011). "Predicting potentially plant-available lead in contaminated residential sites." *Environmental Monitoring and Assessment*, 175, pp. 661-676.

**Antoniou, G.E.** and P.A. Katsalis (2011). "On the 1D and 2D Rogers-Ramanujan continued fractions." *Journal of Circuits, Systems, and Computers*, 20:4, pp. 573-585.

**Antoniou, G.E. (2012).** "On the minimal realization of 2D Roger-Ramanujan CFE systems", (IEEE Xplore) 10th International Symposium on Signals, Circuits and Systems (ISSCS), Iasi, Romania.

**Arango, E., A. Li** (2011). "The behavior of DS-divisors of positive integers." *International Journal of Pure and Applied Mathematics*, 70:6, pp. 785-795.

**Barbooti, M.M.** (2011). "Turbidimetric determination of hydrocarbon contamination in Passaic River sediments and refinery polluted soils." *Journal of Environmental Protection*, 2, pp. 915-922.

**Barbooti, M.M.,** B.A. Abid and N.M. Al-ShuwaikI (2011). "Removal of heavy metals using chemical precipitation." *Engineering & Technology*, 29:3, pp. 595-612.

Baracos V, P. Caserotti, C.P. Earthman, D. Fields, D. Gallagher, K. Hall, S.B. Heymsfield, M.J. Müller, A. Napolitano, C. Pichard, L.M. Redman. W. Shen, J.A. Shephard and **D. Thomas** (2012). "Advances in the science and application of body composition measurement." *Journal of Parenteral and Enteral Nutrition*, 36:1 pp. 96-107.

Bowles, J.A., §Tatsumi-Petrochilos, L., Hammer, J.E., and **Brachfeld S.A.** (2012). Multi-component cubic oxide exsolution in synthetic basalts: temperature dependence and implications for magnetic properties, *Journal of Geophysical Research*, 117:3, B03202.

Brumlik, M.J., S. Nkhoma, M.J. Kiouss, G. Thompson, T. Patterson, **J.J. Siekierka**, T.C.J. Anderson, and T. Curiel (2011). "Human p38 mitogen-activated protein kinase inhibitor drugs inhibit *Plasmodium falciparum* replication." *Experimental Parasitology*, 128:2, pp. 170-175.

Chatla, S., S. Kadam, D. Kolluru, S. Sinha and **A. Vaidya** (2011). "Complex networks and SOA: A mathematical study of granularity based service selection algorithms, Sadhana – Academy", Proceedings in Engineering Science (Indian Academy of Science), Vol. 36, No. 4, 441-462.

Chu, Tin-Chun, Sean R Murray, Jennifer Todd, Winder Perez, Jonathan R Yarborough, Chiedozie Okafor and **Lee H Lee** (2012) "Adaption of *Synechococcus sp.* IU 625 to growth in the presence of mercuric chloride." *Acta Histochem.*, 114:1, pp. 6-11.

Chu, W., N. Gao, **Y. Deng**, M. R. Templeton, and D. Yin (2011). "Formation of Nitrogenous Disinfection By-Products from Pre-Chloramination," *Chemosphere*, 85(7):1187-1191.

Chu, W., N. Gao, **Y. Deng**, M. R. Templeton, and D. Yin (2011). "Impacts of Drinking Water Pretreatments on the Formation of Nitrogenous Disinfection By-Products," *Bioresource Technology*, 102, 1116-11166.

Chu, W., N. Gao, **Y. Deng**, M. R. Templeton, and D. Yin (2012) "Ozone-biological activated carbon integrated treatment for removal of precursors of halogenated nitrogenous disinfection by-products," *Chemosphere*, 86(11), pp. 1087-1091.

Chung, B.J., and **A. Vaidya** (2011). "A Non-equilibrium pattern selection in particle sedimentation", *Applied Mathematics and Computation*, Vol. 218 (7): 3451-3465.

Church, T.S., **D.M. Thomas**, C. Tudor-Locke, P.T. Katzmarzyk, C.P. Earnest, R.Q. Rodarte, C.K. Martin, S.N. Blair and C. Bouchard (2011). "Trends over 5 decades in U.S. occupation-related physical activity and their associations with obesity." *PLoS ONE*, 6, pp. 1-7.

Counts, C.L., **R.S. Prezant** and E. Chapman. 2011. A critical checklist of the Decapod (Arthropoda: Decapoda) of the Atlantic coastal bays of Maryland. *The Maryland Naturalist* 51(2): 85-112.

**Cutler, J.** and A.J. Radcliffe (2011). "An entropy proof of the Kahn-Lovasz theorem." *Electronic Journal of Combinatorics*. 18:1, p. 10.

**Cutler, J.** and A.J. Radcliffe (2011). "Extremal problems for independent set enumeration." *Electronic Journal of Combinatorics*, 18:1, #P169.

Datta, R., M. Quispe and **D. Sarkar, D.** (2011). "A greenhouse study on the phytoremediation potential of vetiver grass, *Chrysopogon zizanioides* L., in arsenic-contaminated soils." *Bulletin of Environmental Contamination and Toxicology*, 86:1, pp. 124-128.

**Deng, Y.**, and C. Ezyske (2011). "Sulfate Radical-Advanced Oxidation Process (SR-AOP) for Simultaneous Removal of Refractory Organic Contaminants and Ammonia in Landfill Leachate," *Water Research*, 45, 6189-6194.

**Deng, Y.**, E. Rosario Muniz, and X. Ma (2012) "Effects of Inorganic Anions on Fenton Oxidation of Landfill Leachate," *Waste Management and Research*. 30:1, pp. 12-19.

Ezyske, C., and **Y. Deng** (2012). "Landfill Management and Remediation Practices in New Jersey, United States," Chapter 9 in *Management of Organic Waste* by Sunil Kumar and Ajay Bharti (Editors) (ISBN: 978-953-307-925-7), InTech Publisher.

Feldman, C., G. Nothstein, C. Somaiya, K., H. Obeidallah, E. Silverthorne, S. Wunderlich, and **N. M. Goodey** (Nina Goodey and Charles Feldman are listed as equal contributors) (2011). "An exploratory Investigation of Risk of Pathogenic Contamination at Selected Skilled Nursing and Assisted Living Residences. Perspect." *Public Health*, 131:2, pp. 85-8.

**Feng, H.**, H. Zhao, W. Zhang, Q. Li, X. Wang, **M.P. Weinstein**, L. Yu and J. Yao (2011).

“Distribution and assessment of ΣDDT, ΣPCB and ΣPAH contaminants in sediments of western Bohai Bay and adjacent urban-industrial estuaries, China.” *Global Journal of Environmental Science and Technology*, 1: 15. p.1-13.

Fielding, C.R., G.H. Browne, B. Field, F. Florindo, D.M. Harwood, L.A. Krissek, R. Levy, K.S. Panter, **S. Passchier** and S.F. Pekar (2011). “Sequence stratigraphy of the ANDRILL AND-2A drillcore, Antarctica: A long-term, ice-proximal record of early to mid-Miocene climate, sea-level and glacial dynamism.” *Palaeogeography, Palaeoclimatology, Palaeoecology*, 305:1-4, pp. 337-351.

**Forgoston, Eric, Lora Billings, Philip Yecko, and Ira B. Schwartz** (2011). "Set-based corral control in stochastic dynamical systems: Making almost invariant sets more invariant," *CHAOS* 21(1), 013116.

Genzale, M. E., M., M. Crow and **C.A. Molina** (2011). “Evidence that phosphorylation by the mitotic kinase Cdk1 promotes ICER monoubiquitination and nuclear delocalization.” *Experimental Cell Research*, 317, pp. 2490-2502.

**Goodey, N.M., K.G. Herbert, S.M. Hall and C.K. Bagley** (2011). “Prediction of residues involved in inhibitor specificity in the dihydrofolate reductase family.” *Biochimica et Biophysica Acta (BBA) - Proteins and Proteomics*, doi: 10.1016/j.bbapap.2011.08.001.

**Goodey, N.M., M.T. Alapa, D.F. Hagmann, S.G. Korunow, A. Mauro, K.S. Kwon, and S.M. Hall** (2011). “Development of a fluorescently labeled thermostable DHFR for studying conformational changes associated with inhibitor binding.” *Biochem. Biophys. Res. Comm.*, 413:3, pp. 442-447.

**Hauptvogel, D.W. and S. Passchier** (2012). “Early-middle Miocene (17-14 Ma) Antarctic ice dynamics reconstructed from the heavy mineral provenance in AND-2A, Ross Sea, Antarctica.” *Global and Planetary Change*, 82-83, pp. 38–50.

Heymsfield, S.B., M. Heo, **D. Thomas** and A. Pietrobelli (2011). “Scaling of body composition to height: Relevance to height normalized indices.” *American Journal of Clinical Nutrition*, 93: 4, pp. 736-40.

Heymsfield, S.B., **D.M. Thomas**, C.K. Martin, L. Redman, B. Strauss, A. Bosy-Westphal, M.J. Müller, W. Shen and A.M. Ngyuen, (2012). “Energy content of weight loss: Kinetic features during voluntary caloric restriction, metabolism.”  
<http://dx.doi.org/10.1016/j.metabol.2011.11.012>.

Kalurachchi, Amal, Debjani Roychoudhury, **Aparna Varde** and Gerhard Weikum (2011). SITAC: “Discovering Semantically Identical Temporally Altering Concepts in Text Archives”, In *ACM EDBT*, 566 - 569.

**Kight, Scott L., Andrew W. Tanner, Gena L. Coffey** (2011). “Termination of parental care in male giant waterbugs, *Belostoma flumineum* Say (Heteroptera: Belostomatidae) is associated with breeding season, egg pad size, and presence of females”, *Invertebrate Reproduction and Development*.

55: 197-204.

**Konas, D.W.**, C. Feldman, B. Anand, J. Piemonte, C. Garay, E. Silverthorne and S.M. Wunderlich (2011). "Laboratory analysis of vitamin C in vegetables served in eldercare facilities and evaluation of related public nutrient database information." *Topics in Clinical Nutrition*, 26:1, pp. 68-77.

**Korky, J.K.** and **J.A. Smallwood** (2011). "Geographic variation in northern green frog larvae, *Lithobates clamitans melanotus*, in northwestern New Jersey." *Bulletin of the Maryland Herpetological Society*, 47:1-4, pp. 1-10.

**Korky, J.K.** (2011). "2011 Natterjack toad (*epidalea calamita laurenti*, 1768) breeding habitat survey, North Dingle Peninsula, Co. Kerry, Ireland." *Bulletin of the Irish Biogeographical Society*, 35, pp. 10-20.

**Lal, P.**, J. Alavalapati, M. Marinescu, J. R. Matta, P. Dwivedi, and A. Susaeta (2011). "Developing sustainability indicators for woody biomass harvesting in the United States." *Journal of Sustainable Forestry* 30(8): 736-755.

**Lal, P.**, J. Alavalapati, and E. Mercer (2011). "Socio-Economic Impacts of Climate Change on Rural United States". *Journal of Mitigation and Adaptation Strategies for Global Change* 16(7): 819-844.

**Lal, P.**, J. Alavalapati, and E. Mercer (2011). "Socio-Economic Impacts of Climate Change on Rural Communities in the United States". In: Alig, R.J.; tech. coord. *Economic modeling of effects of climate change on the forest sector and mitigation options: a compendium of briefing papers*. Gen. Tech. Rep. PNW-GTR 837. Portland, OR: U.S. Department of Agriculture, Forest Service, Pacific Northwest Research Station pp. 73-118.

Laumann S., Micić V., **Kruege M.A.**, Achten C., Sachsenhofer R.F., Schwarzbauer J., Hofmann T. (2011) "Variations in concentrations and compositions of polycyclic aromatic hydrocarbons (PAHs) in coals related to the coal rank and origin." *Environmental Pollution*, **159**:2690-2697.

Li. L., N. Gao, **Y. Deng**, J. Yao, and K. Zhang (2012). "Characterization of intracellular & extracellular algae organic matters (AOM) of Microcystic aeruginosa and formation of AOM-associated disinfection byproducts and odor & taste compounds," *Water Research*, 46 (4), pp. 1233–1240.

Liu, Z., H. Zhang, H. Ma and **S. Hou** (2011). "Selective determination of p-nitrophenol based on its unique voltammetric behavior on nanoporous gold." *Electroanalysis*, 23:12, pp. 2851 – 2861.

Lee, J., and **N.M. Goodey** (2011). "Catalytic Contributions from Remote Regions of Enzyme Structure." *Chemical Reviews*. 111:12, pp. 7595-7624.

Lee, Wah Keat, Ruben Scardovelli, **A. David Trubatch**, and **Philip Yecko** (2010). "Numerical, experimental, and theoretical investigation of bubble aggregation and deformation in magnetic fluids." *Physical Review E*, 82:1, article number 016302.

Massoudi, M., and **A. Vaidya** (2011). "A note on unsteady, unidirectional flow of an incompressible, inhomogeneous Navier-Stokes fluid, International", *Journal of Nonlinear Mechanics*, Vol. 46 (5), 738-741.

Massoudi, M., and **A. Vaidya** (2012). "Analytical solutions to Stokes-type flows of inhomogeneous fluids", *Applied Mathematics and Computation*, Volume 218, Issue 11, pp. 6314–6329.

Mercer, E., **P. Lal**, and J. Alavalapati (2011). "Competitiveness of Carbon Offset Projects on Non Industrial Private Lands in the United States". In: Alig, R.J.; tech. coord. *Economic modeling of effects of climate change on the forest sector and mitigation options: a compendium of briefing papers*. Gen. Tech. Rep. PNW-GTR 837. Portland, OR: U.S. Department of Agriculture, Forest Service, Pacific Northwest Research Station. pp.119-164.

Messina Jr., M.E., and **R. Halaby** (2011). "Does triptolide induce lysosomal-mediated apoptosis in human breast cancer cells?" *Medical Hypotheses*, 77, pp. 91-93.

Micić, V., **Kruge, M.A.**, Köster, J., Hofmann, T. (2011). "Natural, anthropogenic and fossil organic matter in river sediments and suspended particulate matter: a multi-molecular marker approach." *Science of the Total Environment*, 409:905-919.

**Munakata, M., and A. Vaidya** (2012). "Encouraging creativity in mathematics and science through photography", *Teaching Mathematics with Applications*, 31(3): 121-132.

Nhat-Tu Le, N-T., Takei, Y., Shishido, T., Woo, C-H., Chang, E., Heo, K-S., Lee, H., Lu, Y., Morrell, C., Oikawa, M., McClain, C., Wang, X., Tournier, C., **Molina, C.A.**, Vorobjikina, D., Cohen, M.S., Serafimova, I.M., Taunton, J., Fujiwara, K., Yan, C., Patterson, C., Yang, J., and Abe, J. (2012). "p90RSK targets the ERK5-CHIP ubiquitin E3 ligase activity in diabetic hearts and promotes cardiac apoptosis and dysfunction", *Circulation Research* 110: 536-550.

Nwachukwu M.A., **H. Feng** and J. Alinnor (2011). "Trace metal dispersion in soil from auto-mechanic village to urban residential areas in Owerri, Nigeria. *Procedia Environmental Sciences*, 4, 310–322.

Nwachukwu M.A. and **H. Feng** (2011). "A critical review of the management options for end of life vehicles (ELVS) and waste electrical/electronic equipments (WEEE) in the 21st century." *Global Journal of Environmental Science and Technology*, 1:5, p.1-23.

Nwachukwu M.A., **H. Feng** and J. Alinnor (2011). "Integrated studies for automobile wastes management in developing countries; in the concept of environmentally friendly mechanic village." *Environmental Monitoring and Assessment*, 178, 581-593.

Nwachukwu M.A., **H. Feng** and J. Alinnor (2011). "A comparative analysis of trace metal

pollution parity between sandy and shaly soils; evidence from two mechanic villages in the Imo River basin.” *Environmental Earth Sciences*, DOI 10.1007/s12665-011-1122-9.

Ou, H., Gao, N., **Y. Deng**, J. Qiao, K. Zhang, T. Li and L. Dong (2011). “Mechanistic studies of microcystic aeruginosa inactivation and degradation by UV-C irradiation and chlorination with poly-synchronous analyses.” *Desalination*, 272, pp. 107–119.

Ou, H., Gao, N., **Y. Deng**, H. Wang, and H. Zhang (2011) “Inactivation and Degradation of *Microcystis aeruginosa* by UV-C Irradiation,” *Chemosphere*, 85(7), 1192-1198.

Ou, H., Gao, N., **Y. Deng**, J. Qiao, and H. Wang (2012). “Immediate and long-term impacts of UV-C irradiation on photosynthetic capacity, survival and microcystin-LR release risk of *Microcystis aeruginosa*,” *Water Research*, 46 (4), pp. 1241–1250.

Ou, H., Gao, N., C. Wei, **Y. Deng**, and J. Qiao (2012). “Immediate and long-term impacts of potassium permanganate on photosynthetic activity, survival and microcystin-LR release risk of *Microcystis aeruginosa*,” *Journal of Hazardous Materials*, 219–220, pp. 267–275.

**Passchier, S.** (2011). “Ancient Antarctic fjords (News and Views).” *Nature*, 474:7349, pp. 46–4.

**Passchier, S.** (2011). “Linkages between East Antarctic ice sheet extent and southern ocean temperatures based on a pliocene high-resolution record of ice-rafted debris off Prydz Bay, East Antarctica.” *Paleoceanography*, 26, PA420.

**Passchier, S.**, G. Browne, B. Field, C.R. Fielding, L.A. Krissek, K. Panter, S.F. Pekar and ANDRILL-SMS Science Team (2011). “Early and middle Miocene Antarctic glacial history from the sedimentary facies distribution in the AND-2A drill hole, Ross Sea, Antarctica.” *Geological Society of America Bulletin*, 123:11-12, pp. 2352-2365.

Patel, A., A.N. Chojnowski, K. Gaskill, W. De Martini, R.L. Goldberg and **J.J. Siekierka** (2011). “The role of a *Brugia Malayi* p38 MAP kinase ortholog (BmMPK1) in parasite anti-oxidative stress responses.” *Molecular Biochemistry Parasitology*, 176:2, pp. 90-97.

Pawlish, Michael, **Aparna Varde**, **Stefan Robila** (2012). “Analyzing Utilization Rates in Data Centers for Optimizing Energy Management”, In International Green Computing Conference (IGCC), ERSS workshop, June 2012, To appear.

**Peng, Jing**, Guna Seetharaman, **Stefan Robila**, **Aparna Varde** and Wei Fan (2011). Chernoff “Dimensionality Reduction - Where Fischer Meets FKT”, In SIAM SDM, 271-282.

Pierce, E., Williams, T., van der Flierdt, T., Hemming, S., Goldstein, S., **Brachfeld, S.**, (2011). Characterizing the sediment provenance of East Antarctica's weak underbelly: the Aurora and Wilkes sub-glacial basins, *Paleoceanography*, 26,4, doi:10.1029/2011PA002127.

Prinari, Barbara, Gino Biondini, and **A. David Trubatch** (2011). "Inverse Scattering Transform for the Multi-Component Nonlinear Schrodinger Equation with Nonzero Boundary Conditions." *Studies in Applied Mathematics*, 126:3, pp. 245-302.

Quazi, S., R. Datta and **D. Sarkar** (2011). "Effects of soil types and forms of arsenical pesticides on rice growth and development." *International Journal of Environmental Science and Technology*, 8, pp. 445-460.

Rakshit, S., **D. Sarkar**, P. Punamiya and R. Datta (2011). "Antimony sorption at gibbsite-water interface." *Chemosphere*, 84, pp. 480-483.

Saminathan, S., **D. Sarkar**, S. Andra and R. Datta (2011). "Lead fractionation and bioaccessibility in contaminated soils with variable chemical properties." *Chemical Speciation and Bioavailability* . 22:4, pp. 215-225.

Song Z., K.W. Jones, N. Marinkovic, X.M. Xiao, **H. Feng** and E. Tchouparova (2011). "Characterization of organic contaminants in New York/New Jersey Harbor sediments using FTIR-ATR and synchrotron FTIR." *CLEAN - Soil, Air, Water*, 39, pp. 1041-1049.

Suchanek, Fabian, **Aparna Varde**, Richi Nayak and Pierre Senellart (2011). "The Hidden Web, XML and Semantic Web: A Scientific Data Management Perspective", In ACM EDBT, 534 - 537.

Susaeta, A., **P. Lal**, J. Alavalapati and E. Mercer (2011). "Public preferences towards environmental externalities: a choice experiment study of woody biomass based electricity in the Southern United States." *Energy Economics* 33(6): 1111-1118.

Tancer, J. and **A. Varde** (2011). "The Deployment of MML for data analytics over the cloud." In IEEE's International Conference on Data Mining – KDCloud Workshop IEEE's *ICDM*, 166, pp.188-195.

**Taylor, R.W.**, ed. (2011). *Taking Sides: Clashing Views of Sustainability*. NY, NY: McGraw Hill Publishing, 519 pages.

**Thomas, D.M.**, C.K. Martin, S.B. Heymsfield, L.M. Redman, D.A. Schoeller and J.A. Levine (2011). "A simple model predicting individual weight change in humans." *Journal of Biological Dynamics*, 1, pp. 1-21.

**Thomas D.M.**, J.E. Navarro-Barrientos, D.E. Rivera, S.B. Heymsfield, C. Bredlau, L.M. Redman, C.K. Martin, S.A. Lederman, L. Collins and N.F. Butte, (2012). "A dynamic energy balance model predicting gestational weight gain." *American Journal of Clinical Nutrition* , 95:1, pp. 115-122.

**Truitt. P.** et al. (2011). "Electrical spin injection from an organic-based ferrimagnet in a hybrid organic-inorganic heterostructure." *Physics Review. Letters*, 106, p. 156602.

**Varde, Aparna**, Mohammed Maniruzzaman and Richard D. Sisson Jr. (2012). *QuenchML: A Semantics-Preserving Markup Language for Knowledge Representation in Quenching*, In *AIEDAM Journal*, Cambridge University Press, To appear.

Wang, J., N. Gao, **Y. Deng**, S. Xia, and J. Qiao (2011). "PV Cell-Driven Humidification-Dehumidification (H/D) Process for Brine Treatment," *Desalination and Water Treatment*, 28, 328-333.

**Weinstein, M.P.**, S.Y. Litvin, and M.G. Frisk (2012). Reversing two centuries of wetland degradation: can science better inform policy & practice and the "case" for secondary production? *In: Weinstein, M.P. and R.E. Turner (Eds) Sustainability Science: The Emerging Paradigm and the Urban Environment*. Springer, New York.

**Weinstein, M.P.** and R.E. Turner (2012). Foreword. *In: Weinstein, M.P. and R.E. Turner (Eds) Sustainability science: the emerging paradigm and the urban environment*. Springer, New York.

**Weinstein, M.P.** and R.E. Turner (Eds). (2012). *Sustainability science: the emerging paradigm and the urban environment*. Springer, New York.

Wietecha, M.S., J. Zhu, G. Gao, N. Wang, **H. Feng, M.L. Goring, M.L. Kasner** and **S. Hou** (2012). "Platinum nanoparticles anchored on chelating group-modified graphene for methanol oxidation." *Journal of Power Sources*, 198, pp. 30-35.

Xu, J., N. Gao, **Y. Deng**, M. Sui, and Y. Tang (2011). "Perchlorate removal by granular activated carbon coated with cetyltrimethyl ammonium bromide," *Journal of Colloid and Interface Science*, 357, 474-479.

Xu, J., N. Gao, **Y. Deng**, M. Sui and Y. Tang (2011). "Perchlorate removal by granular activated carbon coated with cetyltrimethyl ammonium chloride." *Desalination*, 275:1-3, pp. 87-92.

Xu, J., N. Gao, **Y. Deng**, M. Sui, and Y. Tang (2011). "Perchlorate removal by granular activated carbon coated with cetyltrimethyl ammonium bromide." *Journal of Colloid and Interface Science*, 357, pp. 474-479.

Xue, Dan; Liu, Wei, **Yu, Danlin**; Yin, Jingyuan; Ye, Feiyue (2012). "An Indicator System for Measuring Shanghai's Urban Safety and Security", *IET International Conference on Smart and Sustainable City (ICSSC 2011)*, DOI: 10.1049/cp.2011.0299, pp. 1 – 6.

**Yecko, Philip**, Wah-Keat Lee, **A. David Trubatch**, and **Matthew Vieira** (2011). "Drag enhancement due to macro-chains in uniformly magnetized ferrofluids." *Journal of Magnetism and Magnetic Materials*, 323:10, pp. 1288-1292.

**Yu, Danlin**; Yin, Jingyuan; Ye, Feiyue (2012). "Geographic Information Analysis – Past and Trends", *IET International Conference on Smart and Sustainable City (ICSSC 2011)*, DOI: 10.1049/cp.2011.0289, pp. 1 – 6.

**Yu, Danlin**; Yin, Jingyuan; Ye, Feiyue (2012). "Novel methods to demarcate urban house submarket – cluster analysis with spatially varying relationships between house value and attributes", *IET International Conference on Smart and Sustainable City (ICSSC 2011)*, DOI: 10.1049/cp.2011.0288, pp. 1 – 6.



Zhang, K., N. Gao, **Y. Deng**, T.-F. Lin, C. Li, Y. Ma, L. Li, and M. Sui (2011) "Degradation of Bisphenol-A Using Ultrasonic Irradiation Assisted by Low-Concentration Hydrogen Peroxide," *Journal of Environmental Sciences*, 23(1), pp.31-36.

Zhang, K., N. Gao, **Y. Deng**, M. Shui and Y. Tang (2011). "Granular activated carbon (GAC) adsorption of two algal odorants, dimethyl trisulfide and  $\beta$ -cyclocitral," *Desalination*, 266:1-3, pp. 231-237.

Zhang, X., Y. Hong and **A. Li** (2012). "Optimization of Axial Symmetrical FGM under the Transient-state Temperate Field." *International Journal of Minerals, Metallurgy and Materials*, 19:1, pp. 59-63.

Zhang, K., N. Gao, Y. Deng, T. Zhang, and C. Li (2011) "Aqueous chlorination of algal odorants: Reaction kinetics and formation of disinfection by-products," *Separation and Purification Technology*, 92(18), 93-99.

Zheng, L., N. Gao, and Y. Deng (2012) "Evaluation of DNA Extraction Methods for the Analysis of Microbial Community in Biological Activated Carbon," *Environmental Technology*, 33(4), pp. 437-444.

Zheng, L., N. Gao, **Y. Deng**, E. Du, M. Sui and S. Liu (2011). "The Effect of backwashing in the structure of microbial community on biological activated carbon (BAC) in a water treatment plant." *Fresenius Environmental Bulletin*, 20:7a, pp. 1741-1748.

**Zieba, A.**, C. Richardson, **C. Lucero, S. D. Dieng**, Y. M. Gindt and **J. P. M. Schelvis** (2011). "Evidence for concerted electron proton transfer in charge recombination between FADH<sup>-</sup> and <sup>306</sup>Trp in DNA photolyase." *Journal of the American Chemical Society*. 133, pp. 7824-7836.

## College of Education and Human Services

### BOOKS PUBLISHED

**Bauer, K.D., Liou, D.** & Sokolik, C.A. (2012). *Nutrition counseling and education skill development*. (2<sup>nd</sup>Ed.). Belmont, CA: Wadsworth, Cengage Learning, Inc.

**Burkholder, Z. (2011).** *Color in the classroom: How American schools taught race, 1900-1954*. New York: Oxford University Press.

**Caspi, J. (2012).** *Sibling aggression: Assessment & treatment*. NY: Springer Publishing.

**Jacobson, E. (2012).** *Adult basic education in the age of new literacies*. NY: Peter Lang Publishers.

**Kennedy, D. (2011).** *Philosophical dialogue with children: Essays on theory and practice*. NY: The Mellen Press.

Lankshear, C., & **Knobel, M.** (2011). *New literacies: Everyday practices and social learning*. Third Edition. Maidenhead & New York: Open University Press/McGraw-Hill.

Lankshear, C., & **Knobel, M.** (2011). *Literacies: Social, cultural and historical perspectives*. New York: Peter Lang.

Mack, T. & **Picower, B.** (Eds.). (2011). *Planning to change the world 2011-2012: A plan book for social justice teachers*. New York: NYCoRE/Edliberation.

**Picower, B.** (2012). *Practice what you teach: Social justice education in the classroom and the streets*. Routledge: New York

Vansieleghem, N., & **Kennedy, D.** (Eds.). (2011). *Philosophy for Children in transition: Problems and prospects*. Chisester UK: Wiley-Blackwell.

**Weiner, E.** (2012). *The theater of education possibility*. NY: Peter Lang Publishing.

#### OTHER PUBLICATIONS:

**Ahluwalia, M. K.,** & Mattis, J. S. (2012). Research on religion and spirituality: Stance, authenticity, and conceptual, methodological and professional concerns. In D. K. Nagata, L. P. Kohn-Wood, & L. A. Suzuki (Eds.), *Qualitative strategies for ethnocultural research*. Washington, DC: APA Books.

**Ahluwalia, M. K.** (2011). Holding my breath: The experience of being Sikh after 9/11. *Traumatology*, 17 (3), 41-46.

**Bai, Y., Wunderlich, S.,** & Weinstock, M. (2012). Employers' readiness for the mother-friendly workplace: an elicitation study. *Maternal & Child Nutrition*, DOI:10.1111/j.1740-8709.2011.00334.x.

**Bai, Y., Feldman, C., Wunderlich, S. M.,** & Aletras, S. C. (2011). Process evaluation of the fresh fruit and vegetable program implementation in New Jersey elementary school. *Journal of Child Nutrition & Management*, 35 (2).

**Bai, Y., Feldman, C., Wunderlich, S.,** & Aletras, S. (2011). The USDA Fresh Fruit and Vegetable Program Application in a Northern New Jersey elementary school: Parent and teacher Perception. *Journal of American Dietetic Association*, Supplement 2, 111: A 65. San Diego, CA.

Boxer, P., & **Goldstein, S. E.** (2012). Treating juvenile offenders: Best practices and emerging critical issues. In Grigorenko (Ed.), *Handbook of juvenile forensic psychology and psychiatry*. New York: Springer, 323-340.

Boxer, P., **Goldstein, S.E.**, DeLorenzo, T., Savoy, S., & Mercado, I. (2011). Educational aspiration-expectation discrepancies: Relation to socioeconomic and academic risk-related factors. *Journal of Adolescence*, *34*, 609-617.

**Bulkley, K.E.**, & Burch, P. (2011). The changing nature of private engagement in public education: For-profit and nonprofit organizations and educational reform. *Peabody Journal of Education*, *86*(3), 236-251.

**Burkholder, Z.** (2011). Can anthropology improve antiracist education, *Anthropology Now* *3*, no. 3 (2011): 36-46.

**Burkholder, Z.** (2011). Why we all need integrated schools: A critique of “successful” urban charter schools. *Teachers College Record online*.

Chin, M., Lee, J., **Lee, S.**, Sohn, S., & Sung, M. (2012). Family policy in South Korea: Development, current status, and challenges. *Journal of Child and Family Studies*, *21*(2), 53-64. doi:10.1007/s10826-011-9480-1.

Dailey, S.F., **Glosoff, H.L.**, & Roach, L. (2011). The ASERVIC Ethics Corner. *Interaction*, *X*(3), 2-3.

**DiDonato, N.C.** (2012). Effective self- and co-regulation in collaborative learning groups: An analysis of how students regulate problem solving of authentic tasks. *Instructional Science*. DOI: 10.1007/s11251-012-9206-9.

**DiDonato, N.C.** (2011). The interaction between cognitive and motivational co-regulated processes on a collaborative task. *International Journal of Learning*, *18*(1), 463-476.

Gestsdottir, S., **Urban, J.B.**, Bowers, E., Lerner, J.V., & Lerner, R.M. (2011). Intentional self-regulation, ecological assets, and thriving in adolescence: A developmental systems model. *New Directions for Child and Adolescent Development*, *133*, 61-76.

**Glosoff, H.L.**, Durham, J.C., & Whittaker, J. (2012). Using Supervision to Prepare Effective Counseling Leaders and Social Justice Advocates. In C. Chang, J. Myers, C. Barrio Minton, & A. Dixon (Eds.). *Professional Counseling Excellence through Leadership and Advocacy*. Routledge Publications, 185-206.

**Goldstein, S. E.** (2011). Relational aggression in emerging adults' friendships and romantic relationships. *Personal Relationships*, *18*, 645-656.

**Kennedy, D.** (2012). From outer space and across the street: Matthew Lipman's double vision. In L. Cho-sik & P. Jin-wan (Eds.), *Thinking Education Through Philosophy*. Seoul: Korean Academy of Teaching Philosophy in School, 241-273.

**Kennedy, D.**, & Kennedy, N. S. (2012). Community of philosophical inquiry online and off: Retrospectus and prospectus. In D. R. Garrison & Z. Akyol (Eds.), *Educational Communities of Inquiry: Theoretical Framework, Research, and Practice*. Hershey PA: IGI Global.

**Kennedy, D.** (2012). Developing philosophical facilitation: A toolbox of philosophical moves. In S. Goering, T. Wartenberg, & N. Shudak, (Eds.), *Philosophy in Schools: An Introductory Handbook for Philosophers and Teachers*. New York: Routledge.

**Kennedy, D.** (2012). Rhizomatic curriculum development in community of philosophical inquiry. In M. Santi & S. Oliverio (Eds.). *Educating for Complex Thinking through Philosophical Inquiry. Models, Advances, and Proposals for the New Millennium*, Napoli: Liguori.

**Kennedy, D.** (2012). Marcuse's new sensibility, neoteny, and progressive schooling: Utopian prospects. *Civitas Educationis: Education, Politics, and Culture*, 55-72.

**Klein, E. J., & Riordan, M.** (2011). Wearing the "student hat": Experiential professional development in Expeditionary Learning Outward Bound Schools. *Journal of Experiential Education*, 34(1), 35-54.

**Kloppel, T., Kulinna, P.H., & Cothran, D.,** (2012). Teacher evaluations of standardized physical education curricula. *The Physical Educator*.

**Knobel, M., & Lankshear, C.** (2011). Remix: La nueva escritura popular (Remix: The new popular writing). *Cuadernos Comillas*. 1(1): 105-126.

**Kooyman, L., & Sheely-Moore, A.** (2011). Adolescent sexual risk-taking: What school counselors need to know. *New York State School Counseling Journal*, 8(2), 42-29.

Kulinna, P.H., Cothran, D., & **Kloppel, T.** (2011). Classroom teachers' efficacy in teaching healthy behavior content. *Teacher Development: An international journal of teachers' professional development*. 15(3), 319-33.

Lankshear, C., Leander, K., & **Knobel, M.** (2011). Researching online practices. In B. Somekh and C. Lewin (eds), *Theory and Method in Social Research*. London: Sage. 147-154.

**Lee, S.** (2012). How do I support my students' learning in Family Science?: Teaching philosophy and practice as a Family Science teacher. *Family Science Review*, 17(1), 36-43.

Lerner, R.M., Lerner, J.V., Bowers, E., Lewin-Bizan, S., Gestsdottir, S., & **Urban, J.B.** (2011a). Self-regulation processes and thriving in childhood and adolescence: A view of the issues. *New Directions for Child and Adolescent Development*, 133, 1-10.

Lerner, R.M., Lerner, J.V., Bowers, E., Lewin-Bizan, S., Gestsdottir, S., & **Urban, J.B.** (Eds.). (2011b). Thriving in childhood and adolescence: The role of self-regulation processes. *New Directions for Child and Adolescent Development*, 133.

**Liou, D., Bauer, K.D., & Bai, Y.** (2011). Psychosocial variables and obesity risk reduction behaviors in Chinese Americans. *Ecology of Food and Nutrition*, 50(6),486-505.

Mueller, M.K., Lewin-Bizan, S., & **Urban, J.B.** (2011). Youth activity involvement and positive youth development. In R.M. Lerner, J.V. Lerner, & J.B. Benson (Eds.). *Advances in Child Development and Behavior: Positive youth development: Research and applications for promoting thriving in adolescence*. Burlington: Academic Press. Vol. 41, 231-249.

Mueller, M.K., Phelps, E., Bowers, E.P., Agans, J., **Urban, J.B.**, & Lerner, R.M. (2011). Youth development program participation and intentional-self regulation skills: Contextual and individual bases of pathways to positive youth development. *Journal of Adolescence*, 34, 1115-1125.

**Nesteruk, O.**, & Gramescu, A. (2012). Dating and mate selection among young adults from immigrant families. *Marriage & Family Review*, 48(1), 40-58.

**Nesteruk, O.**, & Marks, L. D. (2011). Parenting in immigration: Experiences of mothers and fathers from Eastern Europe raising children in the United States. *Journal of Comparative Family Studies*, 42(6), 809-825.

**Nesteruk, O. & Price, C.A.** (2011). Retired women and volunteering: The good, the bad, and the unrecognized. *Journal of Women & Aging*, 23(2), 99-112.

**Picower, B.** (2011). Learning to teach and teaching to learn: Supporting the development of new social justice educators. *Teacher Education Quarterly*. 38(4), 7-24.

**Picower, B.** (Ed). (2012). No history is illegal: A Campaign to save our stories. Created by the national network of Teacher Activist Groups. Web site: <http://www.teacheractivistgroups.org/tucson>.

**Sheely-Moore, A.**, & Kooyman, L. (2011). Infusing multicultural and social justice competencies within counseling practice: A guide for trainers. *ADULTSPAN Journal*, 10(2), 102-109.

**Taylor, M.**, Abrams, L., **Klein, E.**, Wray, S., Cordero, E., Silva, J., Famularo/Blazquez, T., Scipio, M., Scott, K., Panitch, A., Romney, W., Brown, C., Barzaga, B., Mooney, E. Rozek, T., Lidman, L., Abreu, I., Monteiro, A., Rincon, R. (2012). Shape Shifting or Becoming Third Space Teacher Educators?: A Co/Autoethnographic Self-Study of Mentors and Faculty. In L. B. Erickson, J. R. Young, S. Pinnegar (Eds.), *Proceedings of the 9th International Conference on Self Study of Teacher Education Practices*, East Sussex, England. Provo, UT: Brigham Young University.

**Weinstein, M.** (2011). Arguing towards truth: The case of the periodic table. *Argumentation*, 25:2, 185-197, DOI: 10.1007/s10503-011-9206-y.

**Wunderlich, S.M.**, Brusca, J., Jonson-Austin, M., Bai, Y., O'Malley, M. (2012). Eating behaviors of older adults participating in government-sponsored programs with different demographic backgrounds. *Global Journal of Health Science*, 4(3).

**Wunderlich, S.M** and Piemonte, J. (2012). Food and Drug Interactions. In *Handbook of Forensic Drug: A Clinical and Forensic Guide 2<sup>nd</sup> edition*. Totowa, NJ: Humana Press.

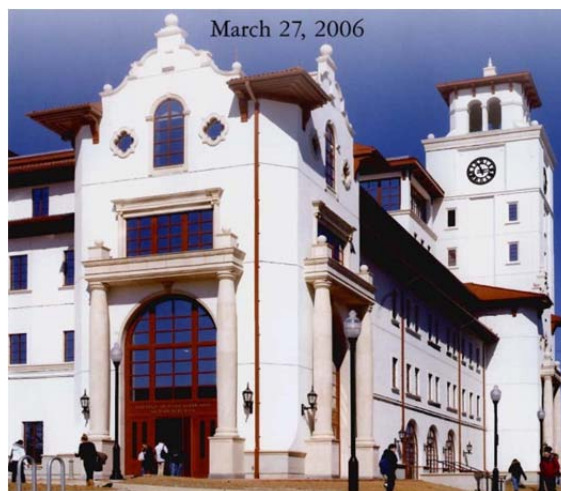
**Wunderlich, S. M., Bai, Y., & Piemonte, J.** (2011). Nutrition risk factors among home delivered and congregate meal participants: Need for enhancement of nutrition education and counseling among home delivered meal participants. *Journal of Nutrition, Health, and Aging*, 15 (9): 768-773.

**Wunderlich, S.M., Feldman, C.,** Latif, K, Punamiya, P. (2011). Soil composition of community gardens: Are there quality concerns? In *Food and Environment: The Quest for a Sustainable Future*. Ashurst, UK:Wessex Institute of Technology Press, 95-101.

## I. Major Capital Projects

### Recently Completed Projects

**University Hall**, a major new academic building (\$80 million), was officially opened in March 2006. Opened for classes in spring 2006, this 270,000 square foot facility houses the College of Education and Human Services; office and instructional space, including a dean's suite; 125 faculty offices; eight specialized learning labs; six department offices; 28 adjunct faculty work stations; the ADP Center for Teacher Preparation and Learning Technology; the Center of Pedagogy; a Literacy Enrichment Center; and the Institute for the Advancement of Philosophy for Children. Classroom space includes eight 100-seat lecture halls and 29 classrooms with 30 to 40 seats. A Conference Center on the 7<sup>th</sup> floor of the building, providing panoramic views of the Manhattan skyline, accommodates groups of up to 500 persons. Also, all network operations and the University's data center as well as training classrooms, offices and workstations for the Office of Information Technology are housed in the facility.



In April 2006, Montclair State University hosted the grand opening celebration for **The George Segal Gallery**. Located adjacent to the Alexander Kasser Theater Complex, the 7,200-square-foot Gallery is the only gallery space named for Segal in the world. George Segal's sculpture, *Street Crossing*, was installed on The Alexander Kasser Theater plaza in anticipation of the opening.



Construction of a new 77,000 square foot student recreation center (\$23 million) was completed in March 2008. **The Recreation Center** features a six-lane swimming pool, locker rooms, two-court gymnasium with elevated running track, two racquetball courts, strength and cardio training areas, offices and a snack bar. The new facility is located at the Northern end of the campus between Blanton Hall and the Yogi Berra Museum. Modern state of the art exercise equipment has been installed in the exercise areas which are located on the first and second floor. The second floor treadmills provide the user with a breathtaking view of the New York City skyline



The **John J. Cali School of Music** is an adaptive re-use project that transforms a former dormitory and classroom building into a state-of-the-art teaching, practice and performance facility. Opened for classes in fall 2009, the School of Music creates a new “gateway” building for the campus.

Built in 1928 in the Spanish Mission Style, the building originally known as Chapin Hall served as a dormitory until a later renovation transformed it into a classroom and departmental office facility. In 2005, the University commissioned Hillier Architecture to renovate and expand the original structure to establish a new home for the John J. Cali School of Music.

The facility includes a 250-seat recital hall; teaching studios; music practice and rehearsal rooms; and faculty offices. Another goal of the project is to achieve a rating under the U.S. Green Building Council’s Leadership in Energy & Environmental Design (LEED) Sustainable Design Rating System.





Reopened in fall 2009 following extensive renovation, **Panzer Gymnasium** (approximately 70,000 gross square feet) received upgrades to the competition gym, a new building entrance (façade) on College Avenue, interior upgrades, a new electrical system, and extensive upgrades to the present HVAC system.

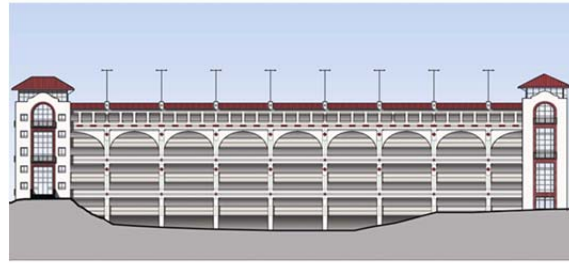


Montclair State University - Panzer Athletic Center  
January, 2008



## **CarParc Diem**

A 5-1/2 story parking structure opened in fall 2010. Located adjacent to Floyd Arena, the structure utilizes existing site conditions to provide approximately 1,100 parking spaces with a net gain of approximately 850 parking spaces. Design queues are consistent with the University's Spanish Mission Style. Advanced design elements allow for future sustainable actions to occur paralleling the activities with University Hall and the United States Green Building Council.

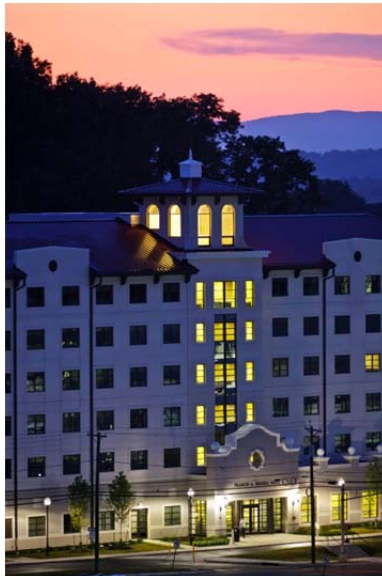


MSU - Parking Garage - East Elevation  
April 20, 2009

•••

## **Frank Sinatra Hall**

Opened for occupancy in fall 2010, Frank Sinatra Hall is a 309 bed, 88,655 sq. ft., residence hall designed to meet the needs of the modern higher education student. The upper floors of the six story building each house between 45-50 sophomores in six to eight bed suites, and provide a lounge that promotes social activity among residents. The first floor includes an entry foyer, community resident director suite, three additional bedroom suites, building storage and mechanical, and a multipurpose room to hold both social and academic events. Interior space planning is designed to meet the needs of students who might be physically challenged. The design calls for minimum energy consumption and maximum maintenance efficiency, while blending with the Spanish Mission architectural style inherent to the campus.



## **The Heights**

Pursuant to the New Jersey Economic Stimulus Act, the new student housing and dining project provides living space for 2,000 additional resident students and approximately 25,000 gross square

feet of dining space on the northern portion of campus in what were formerly parking lots 22 and 23. The developer of this project was Capstone Development of Birmingham, Alabama.



### **College Avenue Promenade Project**

The College Avenue Promenade Project was completed in 2011. The scope of work included new landscaping, lighting, road curbing, sidewalks and site utilities in the area between Normal Avenue and the Red Hawk Deck. Also included within the parameters of the project was the reconstruction of the historic quad area between Chapin, Freeman and Russ Halls.



## **Conrad J. Schmitt Hall Renovation**

The renovation of Conrad J. Schmitt Hall (formerly Finley Hall) was completed in spring 2012. The newly renovated building houses the departments of Linguistics, Modern Languages, and Spanish and Italian. It also houses state-of-the-art multimedia laboratories, including a multi-platform “newsroom of the future,” and is the new home of the University’s radio station, WMSC-FM.

Working journalists will be housed alongside student learning areas in Schmitt Hall, providing additional opportunities for teaching, mentoring, and collaboration. The University’s recently announced partnership with New York Public Radio (NYPR) to make Montclair State the headquarters for NYPR’s New Jersey Public Radio News is just such a collaboration, and it follows the recent partnership between Montclair State University and New Jersey’s public television network, NJTV. NJTV began broadcasting its nightly news program, NJ Today, from the University’s DuMont Television Center in December 2011, and the University now serves as headquarters for the network’s news division.

Schmitt Hall is also home to the Red Hawk Mathematics Learning Center (RHMLC) and the Schmitt Language Center (SLC). The RHMLC provides an innovative and exciting computer-aided, “emporium-style” approach to mathematics education that combines classroom instruction with user-friendly mathematics technology. The SLC offers a Free-Access Language Lab with large screen computers for collaborative pair work, separate video recording and viewing rooms, and distinct Digital Language Lab and Macintosh Lab classroom areas.



## Current Projects

### **Wireless Local Area Network**

The University continues to improve upon the technology infrastructure and resources available to the University community to ensure they are able to effectively carry out the University's teaching, learning and research mission.

The University is upgrading its wireless network infrastructure to the high speed, backbone class 802.11n protocol and expanding the coverage to ensure pervasive access to the University's information resources throughout the campus. This \$5 million project will ensure that members of the University community have wireless service in every residence hall, academic space, and administrative building. Coverage will extend to all outdoor areas, including parking lots and garages.

### **Combined Heating, Cooling, and Power Project**

Montclair State University and UMM Energy Partners, LLC have formed a major public-private partnership to develop a new combined heating, cooling, and power (CHCP) system for the campus.

The new state-of-the-art facility and its related improvements will replace the campus' existing energy plant which began generating steam in the 1940s and providing electricity as a co-generation plant in 1993. The project's development will result in more cost-effective, efficient, and reliable delivery of heating, cooling, and electrical services to campus buildings.

The plant will provide natural gas-fired electric generation, chilled water for cooling, and steam for heat. The steam, condensate, and chilled water will flow to and from campus buildings through the new energy distribution system. Additionally, the majority of the campus' electricity requirements will be satisfied by the onsite plant, which is designed to operate continuously, producing electric power of approximately 5.4 megawatts. The plant will be located on Yogi Berra Drive, adjacent to the campus' Car Parc Diem parking garage.