

MONTCLAIR STATE

UNIVERSITY

Annual Institutional Profile Report

Fall 2010

October 15, 2010

PREFACE

Now in its second century, Montclair State University has earned a national reputation for excellence and innovation. The University offers a broad array of undergraduate and graduate programs in the liberal arts and sciences, as well as in professional fields in business, the arts, and education. Recent recognition of the University's quality has come from Forbes Magazine, which again recognized Montclair State University as one of the top public post-secondary institutions in New Jersey.

Montclair State is currently in a period of significant growth and development with growing enrollments, new programs, new faculty, and expanding physical facilities. As the University enters its second century, it takes pride in its rich history of bold educational innovation, inspired teaching, and vital service to the state.

Institutional Mission

Montclair State University is committed to serving the educational needs of New Jersey with programs characterized by academic rigor and currency in the development of knowledge and its applications. The University will offer a comprehensive range of baccalaureate, master's and certificate programs and a focused portfolio of doctoral programs that are closely aligned with the University's academic strengths and the needs of the state.

The University will recruit faculty with exceptional academic or professional credentials and a deep commitment to the pursuit of their development as teachers and scholars. The University will admit to study with this faculty, students who have demonstrated the potential for high achievement, diligence in the pursuit of their education, and high aspirations for using their education. The University will be inexorably committed to the maintenance of a learning community that is deeply and broadly reflective of the diverse population of New Jersey.

All University programs will develop in students the ability to discover, create, evaluate, apply, and share knowledge in a climate characterized by tolerance and openness in the exploration of ideas. Curricular and co-curricular programs will cultivate the ability to think critically, to act ethically, and to become informed citizen-participants prepared to assume leadership roles in a democracy. Recognizing the increasing connectedness of the world, the University will ensure that all students develop an understanding of global issues and of their responsibilities as citizens of the world.

The University will serve as a center for the creation of new knowledge and for the development of innovative applications of existing knowledge and as a center for pedagogical and artistic excellence and creativity. The University seeks to focus the professional activities of its faculty and the educational endeavors of its students on the enduring disciplines that will continue to constitute the knowledge base of an educated citizenry in the 21st century, as well as on the more specific and changing areas of study that have particular relevance to the region served by the University.

The University will play a role beyond the campus community, partnering and collaborating at the local, state, national and international levels to make positive contributions to addressing issues of importance to society, to enable students to experience their ability to use knowledge in constructive ways in the world, and to share the rich array of intellectual and cultural resources of the University with the people of New Jersey.



Dr. Susan A. Cole
President
Montclair State University

I. TABLE OF CONTENTS

II. Data by Category 1

SECTION A: Accreditation Status 1

SECTION B: Number of Students Served 4

SECTION C: Characteristics of Undergraduate Students 5

SECTION D: Student Outcomes 11

SECTION E: Faculty Characteristics 13

SECTION F: Characteristics of the Trustees..... 15

SECTION G: A Profile of the Institution..... 16

SECTION H: Major Research and Public Service Activities..... 20

SECTION I: Major Capital Projects..... 63

Appendix 1: 2009-2010 Economic Impact Report: An Investment in New Jersey’s Future
Appendix 2: University Authors, April 2010

II. DATA BY CATEGORY

A. Accreditation Status

Montclair State University is accredited by the Commission on Higher Education of the Middle States Association of Colleges and Schools. In addition, the National Council for the Accreditation of Teacher Education has granted accreditation for the preparation of elementary and secondary school teachers as well as administrative and school service personnel. Programs leading to certification are approved by the New Jersey Department of Education using the standards of the National Association of State Directors of Teacher Education and Certification.

Other academic accreditations include:

- AACSB International — The Association to Advance Collegiate Schools of Business (baccalaureate and graduate degree programs in business, School of Business)
- Commission on Accreditation of Allied Health Education Programs (Athletic Training major, BS, Department of Exercise Science and Physical Education, College of Education and Human Services)
- Computing Accreditation Commission (CAC) of the Accreditation Board for Engineering and Technology (ABET) (Computer Science major, concentration in Professional Computing, BS, Department of Computer Science, College of Science and Mathematics)
- Council for the Accreditation of Counseling and Related Education Programs (CACREP) – Counseling, M.A.
- Council on Academic Accreditation (CAA) in Audiology and Speech-Language Pathology of the American Speech Language Hearing Association (ASHA). CAA has accredited the M.A. concentration in Speech-Language Pathology; and the doctoral program in Audiology (ScD) in the Department of Communication Sciences and Disorders, College of Humanities and Social Sciences
- National Association of Schools of Art and Design (Fine Arts major, concentrations in Art History, Fine Arts Education, Studio, BA; Fine Arts/Studio major and concentrations in Industrial Design and in Filmmaking, BFA; Fine Arts major, concentration in Studio, MA; Studio Art major, MFA, Department of Art and Design, College of the Arts)
- National Association of Schools of Dance (Dance major and concentration in Musical Theatre, BFA, Department of Theatre and Dance, College of the Arts)
- National Association of Schools of Music (Music Therapy major, BA; Music major, concentrations in Musical Theatre, Performance, Theory/Composition, BMus; Music major, concentrations in Music Education, Music Therapy, Performance, and Theory/Composition, MA, John J. Cali School of Music, College of the Arts)

- National Association of Schools of Theatre (Theatre major with concentrations in Acting and in Production/Design, BFA; Theatre major with concentrations in Arts Management, Production/Stage Management, and Theatre Studies, MA, Department of Theatre and Dance, School of the Arts)

Program approvals include:

- American Alliance for Health, Physical Education, Recreation, and Dance (AAHPERD)/American Association for Health Education (AAHE): Health Education major, BS, initial teacher certification, P-12
- American Alliance for Health, Physical Education, Recreation and Dance (AAHPERD)/National Association for Sport and Physical Education (NASPE): Physical Education major, BS, initial teacher certification, P-12
- American Bar Association: Justice Studies major, Paralegal Studies concentration, BA. Paralegal Studies minor; Post-baccalaureate Certificate Program in Paralegal Studies
- American Chemical Society: Biochemistry major, BS; Chemistry major, BS. Chemistry minor; Chemistry major, MS; Chemistry major, Biochemistry concentration, MS
- American Dietetic Association: Nutrition and Food Science major, concentration in Dietetics, Bachelor of Science; Preprofessional Practice Program (AP4)
- American Music Therapy Association: Music Therapy major, BA; Music major, concentration in Music Therapy, MA
- Council for Exceptional Children: Early Childhood Special Education major, MEd; Learning Disabilities major, MEd; Learning Disabilities Teacher-Consultant, post-master's certification; Communication Sciences and Disorders major, concentration in Speech-Language Pathology, MA
- Educational Leadership Constituent Council (ELCC): Educational Leadership major, MA
- International Reading Association (IRA): Reading major, MA; Reading, post-baccalaureate initial teacher certification, P-12; Reading Specialist, post-baccalaureate educational services certification, P-12
- National Association for the Education of Young Children (NAEYC): Family and Child Studies major, concentration in Early Childhood, BA, initial teacher certification, P-3
- National Association for Music Therapy: Music Therapy major, BA
- National Council for the Social Studies (NCSS): Anthropology major, BA, initial teacher certification, 7-12; History major, BA, initial teacher certification, 7-12; Political Science major, BA, initial teacher certification, 7-12; Sociology major, BA, initial teacher certification, 7-12; Geography major, BA, initial teacher certification, 7-12; Economics major, BA, initial teacher certification, 7-12; Social Studies, MAT, initial teacher certification, 7-12; Social Studies, post-baccalaureate teacher certification, 7-12

Annual Institutional Profile of Montclair State University, 2010

- National Council of Teachers of English (NCTE): English major, BA, initial teacher certification, 7-12; English, MAT, initial teacher certification, 7-12; English, post-baccalaureate teacher certification, 7-12
- National Council of Teachers of Mathematics (NCTM): Mathematics major (BS), initial teacher certification, 7-12; Mathematics, MAT, initial teacher certification, 7-12; Mathematics, post-baccalaureate teacher certification, 7-12
- Teachers of English to Speakers of Other Languages (TESOL): Linguistics major BA, initial teacher certification, P-12; Teaching English as a Second Language, MAT, initial teacher certification, P-12; Teaching English as a Second Language, post-baccalaureate teacher certification, P-12

B. Number of Students Served

Fall 2009 Undergraduates

In fall 2009, 14,139 undergraduates enrolled at Montclair State University (see Table II.B.1). This headcount was up 3.0% from fall 2008, and 38.8% from fall 2000.

Table II.B.1: Undergraduate Enrollment by Attendance Status, Fall 2009

	Number	Percent
Full-time	12,113	85.7%
Part-time	2,026	14.3%
Total	14,139	100.0%

The proportion of undergraduates studying full-time also rose over the 10-year period. The percent of undergraduates enrolled full-time increased 11 percentage points, from 74.7% in fall 2000 to 85.7% in fall 2009.

Fall 2009 Graduate Students

Montclair State University enrolled 4,032 graduate students in fall 2009 (see Table II.B.2). This graduate student headcount was up 0.8% from fall 2008, and 21.7% from fall 2000.

Table II.B.2: Graduate Enrollment by Attendance Status, Fall 2009

	Number	Percent
Full-time	1,079	26.8%
Part-time	2,953	73.2%
Total	4,032	100.0%

The proportion of graduate students studying full-time was higher than 10 years earlier. The percent of graduate students enrolled full-time rose more than five percentages points, from 21.6% in fall 2000 to 26.8% in fall 2009.

FY09 (12-Month) Unduplicated Enrollments

Montclair State University enrolled over 21,000 students during the course of the entire 2008-2009 year (see Table II.B.4). The 12-month full-time equivalent (FTE) enrollment was 15,207.

Table II.B.4: Unduplicated Enrollment, FY09 (IPEDS 12-Month)

	Headcount	Credit Hours	FTE
Undergraduate	16,216	391,847	13,062
Graduate	4,974	51,480	2,145
Total	21,190	443,327	15,207

C. Characteristics of Undergraduate Students

Fall 2009 Freshmen

A total of 13,469 individuals applied for admission as first-time freshmen to Montclair State University in fall 2009, up 93% from fall 2000. The University admitted 47% of these applicants, and 2,117 of those who were admitted to the University enrolled as freshmen for a yield of 33%. The fall 2009 admissions yield was approximately nine percentage points lower than in fall 2000.

Fall 2009 freshmen entered MSU as either regular admits, special admits, or students admitted through the Educational Opportunity Fund (EOF) program. By admitting students using different admissions categories, the University fulfilled the hopes and aspirations of more of its applicants. Of MSU's 2,101 full-time, first-time students (IPEDS cohort), 86.6% were Regular Admits, 7.5% were admitted through the EOF program, and 5.9% were Special Admits (see Table II.C.1).

MSU's fall 2009 full-time, first-time students (IPEDS cohort) had an average combined (Math and Critical Reading) SAT score of 1,001. Regularly admitted full-time entrants had a mean SAT score of 1,020, while EOF entrants and special admits had mean combined SAT's of 845 and 924, respectively. For all full-time students (IPEDS cohort), the average math SAT score (507) exceeded the average critical reading (494) and writing (499) scores (see Table II.C.1).

TABLE II.C.1: Mean Math, Reading & Writing SAT for First-Time IPEDS Cohort, by Admission Status and Overall, Fall 2009

Type	Full-Time			Part-Time				
	Number	Math	Read	Write	Number	Math	Read	Write
Regular	1,819	515	504	509	9	520	426	459
EOF	158	436	409	414	2	410	425	415
Special	124	470	453	461	5			
All	2,101	507	494	499	16	498	426	449
Missing	-	40	40	49	-	6	6	7

In fall 2009, Montclair State University used the College Board's suite of Accuplacer tests to assess college readiness in elementary algebra. College readiness in writing was initially assessed using the SAT essay and writing scores, in combination, followed by a faculty review of early writing samples.

Incoming freshmen whose SAT-Math scores were below 550, or who failed to attain at least a B-score in Algebra II in high school, were required to take the Accuplacer elementary algebra portion of Accuplacer. Everyone's SAT-W and SAT-essay scores were examined for possible placement into developmental writing; followed by a faculty review of writing samples.

Approximately 4% of fall 2009 undergraduates were enrolled in one or more remedial courses. Most of those enrolled in remediation were first-time freshmen.

Table II.C.2: Enrollment in Remedial Courses, Fall 2009

Total Fall 2009 Undergraduate Enrollment	Number of Students Enrolled in One or More Remedial Courses	Percent of Total
14,139	601	4.3%
Total Number of Full-time, First-time Students	Number of FTFT Students Enrolled in One or More Remedial Courses	Percent of FTFT Students Enrolled in One or More Remedial Course
2,101	442	21.0%
Remedial Subject Area	Number of FTFT Students Enrolled in	Percent of FTFT Students Enrolled in
Reading	76	3.6%
Writing	191	9.1%
Math Computation	0	0.0%
Elementary Algebra	236	11.2%

A survey administered to fall 2009 first-time freshmen revealed that over 89% considered MSU their first or second choice among colleges. The survey also revealed that the top three reasons freshmen chose MSU were: a) its good academic reputation (65%), b) the success of its graduates in finding good jobs (54%), and c) its affordability (54%).

The profile of the fall 2009 entering class reflects the continuing commitment of the University to an ethnically and racially diverse student body. Excluding unknowns, 10% of full-time, first-time students identified themselves as African American, 7% as Asian, and 22% as Latino/a. Over 1% of freshmen were international students, and over 61% of entering freshmen were female.

Fall 2009 Undergraduates

In fall 2009, a total of 18,171 students attended Montclair State University. Of this total, 14,139 (or 77.8% of all enrollees) were registered as undergraduates. The number of undergraduates attending the University rose 16% between fall 2005 and fall 2009. Nearly 86% of fall 2009 undergraduates attended the University full-time, up over four percentage points from fall 2005. MSU's undergraduates were racially/ethnically diverse. Excluding unknowns, over 21% of undergraduates identified themselves as Latino/a, 10% as African American, 6% as Asian, 57% White, and 5% non-resident aliens (see Table II.C.3.a).

TABLE II.C.3.a: Undergraduate Enrollment by Race/Ethnicity, Fall 2009

	Full-time		Part-time		Total	
	Number	Percent	Number	Percent	Number	Percent
Native Amer.	20	0.2%	7	0.3%	27	0.2%
African Amer.	1,060	8.8%	197	9.7%	1,257	8.9%
Asian	720	5.9%	107	5.3%	827	5.8%
Latino/a	2,321	19.2%	406	20.0%	2,727	19.3%
White	6,327	52.2%	1,010	49.9%	7,337	51.9%
Non-Res. Alien	654	5.4%	50	2.5%	704	5.0%
Missing	1,011	8.3%	249	12.3%	1,260	8.9%
Total	12,113	100.0%	2,026	100.0%	14,139	100.0%

In fall 2009, 61% of all undergraduates were female, and the average age of the undergraduate population was 22.5 years (see Tables II.C.3.b and II.C.3.c).

TABLE II.C.3.b: Undergraduate Enrollment by Sex, Fall 2009

	Full-time		Part-time		Total	
	Number	Percent	Number	Percent	Number	Percent
Female	7,401	61.1%	1,269	62.6%	8,670	61.3%
Male	4,712	38.9%	757	37.4%	5,469	38.7%
Total	12,113	100.0%	2,026	100.0%	14,139	100.0%

TABLE II.C.3.c: Undergraduate Enrollment by Age, Fall 2009

	Full-time		Part-time		Total	
	Number	Percent	Number	Percent	Number	Percent
Less than 18	14	0.1%	33	1.6%	47	0.3%
18-19	3,681	30.4%	45	2.2%	3,726	26.4%
20-21	4,717	38.9%	127	6.3%	4,844	34.3%
22-24	2,634	21.7%	627	30.9%	3,261	23.1%
25-29	668	5.5%	448	22.1%	1,116	7.9%
30-34	202	1.7%	224	11.1%	426	3.0%
35-39	69	0.6%	147	7.3%	216	1.5%
40-49	100	0.8%	238	11.7%	338	2.4%
50-64	28	0.2%	123	6.1%	151	1.1%
More than 64	0	0.0%	13	0.6%	13	0.1%
Unknown	0	0.0%	1	0.0%	1	0.0%
Total	12,113	100.0%	2,026	100.0%	14,139	100.0%

Annual Institutional Profile of Montclair State University, 2010

During FY2009, MSU's undergraduates received financial aid from Federal, State, University, and private sources. Aid took multiple forms, from grants and scholarships, through loans and waivers. For those who needed financial assistance, the MSU Alumni Association and the MSU Foundation sponsored a number of scholarships, and special MSU program awards were substantial, amounting to nearly \$5 million during FY09. During the same fiscal year, Federal grants, loans, and work-study programs amounted to over \$72 million.

During FY09, MSU distributed nearly \$24 million in state-funded financial aid, including both scholarships and NJCLASS loans (see Table II.C.4). A total of 5,039 awards were made to MSU students, including 3,076 TAG Awards, 769 NJCLASS Loans, and 667 EOF Awards.

Table II.C.4: Financial Aid from Federal, State & Institution-Funded Programs, FY2009

	Recipients	\$ Dollars	\$/Recipient
<u>STATE PROGRAMS</u>			
TAG	3,076	\$12,983,000	\$4,221
EOF	667	\$772,000	\$1,157
Distinguished Scholars	254	\$231,000	\$909
Urban Scholars	141	\$126,000	\$894
NJCLASS Loans	769	\$8,543,000	\$11,109
NJ Stars	95	\$830,000	\$8,737
OSRP	37	\$125,000	\$3,378
<u>FEDERAL PROGRAMS</u>			
Pell Grants	3,520	\$11,687,000	\$3,320
College Work Study	375	\$447,000	\$1,192
Perkins Loans	257	\$532,000	\$2,070
SEOG	631	\$743,000	\$1,178
Stafford Loans (Subsidized)	6,629	\$26,054,000	\$3,930
Stafford Loans (Unsubsidized)	7,686	\$26,125,000	\$3,399
PLUS Loans	663	\$6,452,000	\$9,732
<u>INSTITUTIONAL PROGRAMS</u>			
Grants/Scholarships	1,189	\$4,676,000	\$3,933
Loans	0	\$0	\$0

Of MSU's 2,117 first-time students who entered in fall 2009, over 97% were New Jersey residents (see Table II.C.5). Most were from Bergen (19.8%), Passaic (13.6%), and Essex (12.8%) counties.

Table II.C.5: Full-Time, First-Time Student Enrollment by State of Residence, Fall 2009

State Residents	Non-State Residents	Total Students	% State Residents
2,055	62	2,117	97.1%

Fall 2009 Graduate Students

Of the 18,171 students who attended Montclair State University in fall 2009, 4,032 (22%) were graduate students. Graduate student enrollment rose nearly 4% between fall 2005 and fall 2009.

Most graduate students (73%) attended MSU part-time, taking fewer than nine credits per semester. Seventy-three percent of fall 2009 graduate students were female, and the average age of the graduate student population was 32 years. Excluding unknowns, 9% of graduate students identified themselves as African American, 4% as Asian, 7% as Latino/a, 75% as White, and 4% as non-resident aliens. Nearly 94% of MSU's graduate students are New Jersey residents.

D. Student Outcomes

Sixty-two percent of all full-time, first-time freshmen who entered MSU in the fall of 2003 earned a degree within six years of entry (see Table II.D.1.a). Six-year graduation rates were 55% or higher for all racial/ethnic groups, with White students having the highest graduation rate of 65%.

**TABLE II.D.1.a: Four-, Five-, and Six-Year Graduation Rates of Fall 2003
Full-Time, First-Time Freshmen by Race/Ethnicity**

	Graduated in 4 Years		Graduated in 5 Years		Graduated in 6 Years	
	Number	Percent	Number	Percent	Number	Percent
African Amer.						
Cohort=178	44	24.7%	92	51.7%	102	57.3%
Asian						
Cohort=106	39	36.8%	59	55.7%	65	61.3%
Latino/a						
Cohort=267	67	25.1%	127	47.6%	147	55.1%
White						
Cohort=973	300	30.8%	566	58.2%	6354	65.2%
Non-Res. Alien						
Cohort=29	10	34.5%	14	48.3%	15	51.7%
Other*						
Cohort=42	11	26.2%	16	38.1%	21	50.0%
Total						
Cohort=1,595	471	29.5%	874	54.8%	985	61.8%

* Includes Native American and Unknown Race/Ethnicity.

Nearly 95% of all full-time, first-time undergraduates who entered MSU in fall 2008 re-enrolled in spring 2009, and 83% returned in fall 2009 (see Table II.D.2).

TABLE II.D.2: Third-Semester Retention of First-Time Undergraduates

	Original Cohort	Retained		Not Retained	
	Number	Number	Percent	Number	Percent
Full-time	2,257	1,872	82.9%	385	17.1%
Part-time	15	6	40.0%	9	60.0%
Total	2,272	1,878	82.7%	394	17.3%

Transfer Student Outcomes

Of the 1,007 students who entered MSU as full-time transfer students in fall 2003, 52% earned their degrees within three years, 66% earned degrees within four years, and 73% earned degrees within six years. The six-year graduation rate for fall 2003 full-time transfer students who entered as freshmen was 62%, while 72% of those who entered as sophomores, 78% of those who entered as juniors, and 86% of those who entered as seniors also earned a degree within six-years. The one-year retention rate for full-time transfer students who entered in fall 2008 was 87%.

Other Student Outcomes

A survey of recent graduates revealed that, one year after graduation, 21% of respondents were enrolled in graduate school, and 88% were gainfully employed. A majority (89%) of employed alumni said they were contributing to the State's economy by working in New Jersey, and over 70% said they held jobs that were "somewhat" to "very" related to their MSU majors.

Montclair State University participates in the Voluntary System of Accountability (VSA) that is co-sponsored by the Association of Public and Land-grant Universities (APLU) and the American Association of State Colleges and Universities (AASCU) with support from the Lumina Foundation. As indicated on the VSA web site (www.voluntarysystem.org) "The Voluntary System of Accountability is an initiative by public 4-year universities to supply basic, comparable information on the undergraduate student experience to prospective students, families, and other higher education stakeholders through a common web report – the College Portrait." MSU is one of only six institutions in New Jersey that voluntarily share information about student outcomes to all interested parties, clearly demonstrating our commitment to both data transparency and the continuous improvement of student learning outcomes. Montclair State University's VSA College Profile can be viewed at www.collegeportraits.org by clicking on "College Profiles," and selecting New Jersey under the "Colleges by State" tab.

Local assessment efforts are led by the Taskforce on Assessment and University Effectiveness (TAUE). During the past year, TAUE assessed student learning in general education, and propagated guidelines to academic departments on procedures for assessing learning in the major. During the current year, TAUE will reach out to non-academic units to involve them in the assessment of even broader areas of institutional effectiveness.

TAUE's efforts are also informed by information gathered from students through the University's participation in the National Survey of Student Engagement (NSSE), the Noel-Levitz Student Satisfaction Inventory, and the Cooperative Institutional Research Program (CIRP) surveys of entering freshman and exiting seniors. Faculty and staff perspectives on student outcomes are revealed through the Faculty Survey of Student Engagement (FSSE), the Higher Education Research Institute (HERI) survey of faculty, and the Noel-Levitz Institutional Priorities Survey. These national surveys are supplemented with a number of local surveys of alumni, entering transfer and graduate students, and University employees (both faculty and staff).

E. Faculty Characteristics

In fall 2009, Montclair State University employed 553 full-time faculty members (see Table II.E.1).

TABLE II.E.1: Full-time Faculty by Race/Ethnicity, Sex, Tenure Status, and Academic Rank, Fall 2009															
	Female					Male					Total				
	Professor	Associate	Assistant	Other	Total	Professor	Associate	Assistant	Other	Total	Professor	Associate	Assistant	Other	Total
Native Amer.	0	0	0	0	0	0	0	0	0	0	0	0	0	0	0
Tenured	0	0	0	0	0	0	0	0	0	0	0	0	0	0	0
Untenured	0	0	0	0	0	0	0	0	0	0	0	0	0	0	0
African Amer.	5	6	11	0	22	6	6	2	1	15	11	12	13	1	37
Tenured	5	6	7	0	18	6	5	1	0	12	11	11	8	0	30
Untenured	0	0	4	0	4	0	1	1	1	3	0	1	5	1	7
Asian	3	13	7	0	23	19	11	7	0	37	22	24	14	0	60
Tenured	3	10	1	0	14	17	10	1	0	28	20	20	2	0	42
Untenured	0	3	6	0	9	2	1	6	0	9	2	4	12	0	18
Latino/a	3	8	6	1	18	4	10	2	0	16	7	18	8	1	34
Tenured	3	8	2	0	13	4	8	1	0	13	7	16	3	0	26
Untenured	0	0	4	1	5	0	2	1	0	3	0	2	5	1	8
White	60	55	60	11	186	79	67	46	5	197	139	122	106	16	383
Tenured	55	47	13	0	115	75	63	11	1	150	130	110	24	1	265
Untenured	5	8	47	11	71	4	4	35	4	47	9	12	82	15	118
Non-Res. Alien	0	0	12	0	12	0	0	10	1	11	0	0	22	1	23
Tenured	0	0	0	0	0	0	0	3	0	3	0	0	3	0	3
Untenured	0	0	12	0	12	0	0	7	1	8	0	0	19	1	20
Missing	0	2	4	1	7	3	3	3	0	9	3	5	7	1	16
Tenured	0	1	0	0	1	1	3	0	0	4	1	4	0	0	5
Untenured	0	1	4	1	6	2	0	3	0	5	2	1	7	1	11
Total	71	84	100	13	268	111	97	70	7	285	182	181	170	20	553
Tenured	66	72	23	0	161	103	89	17	1	210	169	161	40	1	371
Untenured	5	12	77	13	107	8	8	53	6	75	13	20	130	19	182

The number of full-time faculty in fall 2009 (553) was up approximately 17% from fall 2005 (474). Between fall 2005 and fall 2009, the number of full-time male faculty members rose 6% (268 to 285), while the number of full-time female faculty members increased 30% (206 to 268).

MSU's full-time faculty was augmented by a highly-trained cadre of adjunct professors, visiting specialists, administrators, and professional staff. In fall 2009, full-time faculty taught 53% of all course sections, while adjunct faculty taught 41%, and staff taught 6% (see Table II.F.2).

Table II.E.2: Percent of Course Sections Taught By Full-Time Faculty, Fall 2009						
No. of Sections	# taught by F-T Faculty	% taught by F-T Faculty	# taught by P-T Faculty	% taught by P-T Faculty	# taught by Others	% taught by Others
3,757	1,987	52.9%	1,555	41.4%	215	5.7%

The total headcount of faculty who taught at MSU in fall 2009 was 1,489. Of these, 936 (63%) were part-time adjunct professors or visiting specialists (see Table II.F.3).

Table II.E.3: Headcount Ratio of Full- to Part-Time Faculty, Fall 2009				
Total No. of Faculty	No. Full-Time	Pct. Full-Time	No. Part-Time	Pct. Part-Time
1,489	553	37.1%	936	62.9%

F. Characteristics of the Trustees

1. Race/Ethnicity and Gender of Governing Board

	White	Black	Hispanic	Asian	American Indian	Non-Res Alien	Unknown	Total
Male	8	1	2					11
Female	4							4
Total	12	1	2	0	0	0	0	15

2. Members of the Board of Governors and/or Trustees

Name	Title	Affiliation
Susan L. Blount	Senior Vice President and General Counsel	Prudential Financial, Inc.
Rose C. Cali	Education Advocate	Founder, Yogi Berra Museum and Learning Center
Louis Castano	Student	Montclair State University
Francis M.C. Cuss	Senior Vice President	Bristol-Myers Squibb Company
Mitchell E. Hersh	President and CEO	Mack-Cali Realty
George J. Hiltzik	Senior Executive	N.S. Bienstock, Inc.
Douglas L. Kennedy	President, NJ Division	Capital One Bank
Ralph A. LaRossa	President and Chief Operating Officer	PSE&G
John L. McGoldrick	Senior Advisor	International AIDS Vaccine Initiative
William T. Mullen	President	NJ State Building and Construction Trades Council AFL-CIO
Carlos G. Ortiz	Vice President and General Counsel	Goya Foods
Christine L. Padilla	Owner and Consultant	BIT Solutions, LLC
Preston D. Pinkett III	Vice President, Social Investment Program	Prudential Financial, Inc.
Susan A. Cole, <i>ex officio</i>	President	Montclair State University
Jonathan Aronoff, <i>ex officio</i>	Student	Montclair State University

3. URL

If your organization has a web site that includes information on your governing board, please report the URL.

URL <http://www.montclair.edu/bot/>

G. A Profile of the Institution

Montclair State University offered the following programs and majors at the undergraduate and graduate levels in fall 2009:

FALL 2009 ACTIVE DEGREE PROGRAMS	
DEGREE PROGRAMS	CIP CODE*
<i>BACHELOR OF ARTS</i>	
ANTHROPOLOGY	450201
BROADCASTING	090701
CLASSICS	161201
CHILD ADVOCACY	440701
COMMUNICATION STUDIES	090101
DANCE EDUCATION	131324
ECONOMICS	450601
ENGLISH	230101
FAMILY AND CHILD STUDIES	190101
FASHION STUDIES	500407
FINE ARTS	500701
FRENCH	160901
GENERAL HUMANITIES	240103
GEOGRAPHY	450701
HISTORY	540101
ITALIAN	160902
JURISPRUDENCE	229999
JUSTICE STUDIES	309999
LATIN	161203
LINGUISTICS	160102
MUSIC THERAPY	512305
PHILOSOPHY	380101
POLITICAL SCIENCE	451001
PSYCHOLOGY	420101
RELIGIOUS STUDIES	380201
SOCIOLOGY	451101
SPANISH	160905
THEATRE STUDIES	500501
WOMEN'S & GENDER STUDIES	050207
<i>BACHELOR OF FINE ARTS</i>	
ANIMATION AND ILLUSTRATION	500499
DANCE	500301
FILMMAKING	500602
FINE ARTS/STUDIO	500701
GRAPHIC DESIGN	500409
MUSICAL THEATRE	500901
THEATRE	500501

FALL 2009 ACTIVE DEGREE PROGRAMS (cont.)

DEGREE PROGRAMS	CIP CODE*
<i>BACHELOR OF MUSIC</i>	
MUSIC	500903
<i>BACHELOR OF SCIENCE</i>	
AQUATIC AND COASTAL SCIENCES	309999
ATHLETIC TRAINING	510913
BIOCHEMISTRY	260202
BIOLOGY	260101
BUSINESS ADMINISTRATION	520201
CHEMISTRY	400501
COMPUTER SCIENCE	110101
GEOSCIENCE	400601
HEALTH EDUCATION	131307
INFORMATION TECHNOLOGY	110103
MATHEMATICS	270101
MOLECULAR BIOLOGY	260402
NUTRITION AND FOOD SCIENCE	190501
PHYSICAL EDUCATION	131314
PHYSICS	400801
SCIENCE INFORMATICS	309999
<i>MASTER OF ARTS</i>	
APPLIED LINGUISTICS	160102
CHILD ADVOCACY	440701
COMMUNICATION SCIENCES & DISORDERS	510201
COUNSELING	131101
EDUCATIONAL LEADERSHIP	130401
EDUCATIONAL PSYCHOLOGY	421801
ENGLISH	230101
ENVIRONMENTAL STUDIES	030103
EXERCISE SCIENCE & PHYSICAL EDUCATION	131314
FAMILY AND CHILD STUDIES	190101
FINE ARTS	500701
FRENCH	160901
HEALTH EDUCATION	131307
HISTORY	540101
LAW AND GOVERNANCE	229999
MUSIC	500901
PSYCHOLOGY	420101
PUBLIC & ORGANIZATIONAL RELATIONS	090101
READING	131315
SPANISH	160905
TEACHING MIDDLE GRADES MATHEMATICS	131311
THEATRE	500501

FALL 2009 ACTIVE DEGREE PROGRAMS (cont.)

DEGREE PROGRAMS	CIP CODE*
<i>MASTER OF SCIENCE</i>	
ACCOUNTING	520301
AQUATIC AND COASTAL SCIENCES	309999
BIOLOGY	260101
CHEMISTRY	400501
CHEMISTRY: CHEMICAL BUSINESS	400501
COMPUTER SCIENCE	110101
GEOSCIENCE	400601
MATHEMATICS	270101
MOLECULAR BIOLOGY	260204
NUTRITION AND FOOD SCIENCE	190501
PHARMACEUTICAL BIOCHEMISTRY	260202
STATISTICS	270501
<i>MASTER OF ARTS IN TEACHING</i>	
TEACHING	130101
<i>MASTER OF BUSINESS ADMINISTRATION</i>	
BUSINESS ADMINISTRATION	520201
<i>MASTER OF EDUCATION</i>	
EARLY CHILDHOOD & ELEMENTARY EDUC.	139999
INCLUSIVE EARLY CHILDHOOD EDUCATION	131015
LEARNING DISABILITIES	131011
SPECIAL EDUCATION	131001
TEACHER LEADERSHIP	139999
<i>MASTER OF FINE ARTS</i>	
STUDIO ART	500702
<i>MASTER OF PUBLIC HEALTH</i>	
PUBLIC HEALTH	512201
<i>DOCTOR OF EDUCATION (Ed.D.)</i>	
EDUCATION PEDAGOGY	130101
MATHEMATICS PEDAGOGY	131399
<i>DOCTOR OF PHILOSOPHY (Ph.D.)</i>	
COUNSELOR EDUCATION	139999
ENVIRONMENTAL MANAGEMENT	030201
<i>DOCTOR OF SCIENCE (Sc.D.)</i>	
AUDIOLOGY	510202

In addition, the following certificates were offered at the undergraduate and/or graduate level:

- Accounting, graduate
- Advanced Counseling, graduate
- American Dietetic Association, graduate

Artist Diploma, graduate
Child Advocacy, graduate and undergraduate
CISCO, graduate and undergraduate
Collaborative Teaching for Inclusive Settings, graduate
Conflict Management in the Workplace, graduate
Environmental Justice, undergraduate
Finance, graduate
Food Safety Instructor, graduate
Gerontology, undergraduate
Geographic Information Science, graduate
Gifted & Talented Education, graduate
Human Sexuality Education, graduate
International Business, graduate
Makeup Artistry, undergraduate
Management, graduate
Management Information Systems, graduate
Marketing, graduate
Molecular Biology, graduate
New Literacies, Digital Technologies, and Learning, graduate
Nutrition and Exercise Science, graduate
Object Oriented Computing, graduate
Paralegal Studies, graduate
Performer's Certificate, graduate
Philosophy for Children, graduate
Physical Education, graduate
Physical Science, graduate
School Business Administrator, graduate
School Counseling, graduate
Substance Awareness Coordinator, graduate
Supervisor, graduate
Teacher of Preschool through Grade 3, graduate
Teaching English to Speakers of Other Languages, graduate
Teaching Middle Grades Mathematics, graduate
Teaching Writing, graduate
Translation and Interpretation in Spanish, graduate and undergraduate
Water Resource Management, graduate

H. Major Research and Public Service Activities

Montclair State University serves the citizens of New Jersey and its local communities in numerous ways that are described more fully in Appendix 1, “2009-2010 Economic Impact Report: An Investment in New Jersey’s Future.” First and foremost, the University prepares New Jersey’s youth to lead socially responsible, professionally rewarding, and personally enriching lives. Beyond that, the University’s faculty and staff serve as a rich, human resource to both the State and the communities in which they reside, and the University’s facilities and programming, particularly in the arts, provide cultural enrichment to residents across New Jersey. Finally, expenditures and investments attributable to the University have a significant impact on both State and local economies and job markets.

Responding to a National Science Foundation (NSF) survey of research expenditures, Montclair State University reported FY09 expenditures amounting to over \$1.7 million for separately budgeted research and development in the sciences and engineering (including indirect costs). Nearly \$1.5 million was financed by federal sources, and \$189,000 was from institutional resources. Adding FY09 research expenditures from other disciplines, total expenditures for FY09 approached \$1.9 million.

TABLE II.H.1: R&D Expenditures, FY09 [1]

	Amount
Federally Financed Academic R&D Expenditures - Science and Engineering Only (Line 1110, NSF Form #411)	\$1,488,000
Institutionally Financed Academic R&D Expenditures - All Disciplines (Line 1160, NSF Form #411)	\$189,000
Total of Academic R&D Expenditures Reported (Line 1100, NSF Form #411)	\$1,733,000 [2]
Federally Financed Academic R&D Expenditures – Non-Science and Engineering (not reported to NSF)	\$163,480
Grand Total of Academic R&D Expenditures (All Disciplines and Sources)	\$1,896,480 [3]

[1] Source: NSF Survey of R&D Expenditures at Universities and Colleges (Form #411).

[2] Line 1100 on NSF Form #411, “Total Academic R&D Expenditures,” **includes** \$56,000 from “all other sources” (Line 1175).

[3] This Grand Total of R&D Expenditures includes expenditures for non-science and engineering disciplines, as well as the \$56,000 mentioned above. While this grand total accurately depicts expenditures for FY09, the actual research grants portfolio for MSU for FY09 was over \$7.5 million.

Montclair State University has enjoyed great success in recruiting and retaining outstanding faculty. The University's 553 full-time faculty members, and all those who support them in part-time instructional roles, represent the heart and soul of the institution. Without them, none of the excellent outcomes described above could be achieved.

During the 2009-2010 academic year, faculty members were actively engaged in research, scholarship, and other forms of artistic and creative expression, while also performing service to the University and wider communities. A sampling of these activities revealed that MSU faculty published 18 books, and over 500 journal articles, book chapters, and reviews. Faculty in the arts produced 15 films, 2 CD's, and 75 exhibitions and performances.

Appendix 2 of this report is a brochure titled "University Authors, April 2010," which describes books published by Montclair State University faculty during the past year. Compiled by the Office of the Provost and staff from the Harry A. Sprague Library, the publication highlights recent scholarly productivity of MSU faculty.

The following section of this report lists additional examples of faculty activities and accomplishments during the 2009-2010 academic year.

Selected Montclair State University Faculty Accomplishments

COLLEGE OF THE ARTS (CART)

ART & DESIGN

Assoc. Prof. **Catherine Bebout**, MFA (Printmaking), had a solo exhibition, *Mapping the Body*, at Dowling College, Anthony Giordano Gallery, Islip (Long Island), NY, and had work in *Gunjifa 2009*, a traveling print exhibition organized by Chhaap Press, Baroda, India, with venues in Sweden, Australia, England, India, and the US. Bebout also had work in the invitationals, *Art as Action*, Printmaking Council of NJ, Branchburg, NJ, and *10 Years of the Ink Shop: Prints and Books*, Ink Shop Gallery, Ithaca, NY. She was invited by half-time Prof. **Eileen Foti** to select students to participate in a mail art collaborative exhibition, *For Love, Not Money*, co-organized by Foti and Eve Kask, Director of the Tallinn Print Triennial; commissioned to work on a documentary film titled *Ahead of Time*, about the life of international foreign correspondent and photojournalist Ruth Gruber. Bebout contributed illustrated maps of Ms. Gruber's travels that were used as part of the animated sequences in the film.

Adjunct Prof. **Isaac Chung's**, MFA (Filmmaking) film *Munyurangabo* had theatrical premieres in Washington, DC, Santa Fe, Chicago, and in France. It also screened at Ebertfest 2010 (Roger Ebert Film Festival) and was released on DVD in the USA, Netherlands, and France. His film *Lucky Life* screened at the 2010 Tribeca Film Festival (Narrative Competition section).

Prof. **Denis Feigler**, PhD (Industrial Design), designed new display boards for the Kasser Theatre, which were constructed by fellow Industrial Design colleague, Prof. **Winfield Parsons**. Feigler, along with several Industrial Design students, presented the second phase of the Montclair Animal Shelter design project to the Montclair Township Council, and curated the student design exhibition

sponsored by the Industrial Design Society of America (IDSA) at the International Contemporary Furniture Fair (ICFF) at the Jacob Javits Center, NYC.

Adjunct Prof. **Janet Filomeno**, MFA (Foundations), was invited for inclusion in the upcoming edition of *100 Mid-Atlantic Artists* (Schiffer Publishing, 2011).

Half-Time Prof. **Eileen Foti**, MFA (Papermaking), co-organized an international mail art collaborative exhibition, *For Love, Not Money*, with Assoc. Prof. **Catherine Bebout** and Eve Kask, Director of the Tallinn Print Triennial; exhibition, *Off the Page*, at the Stuart County Day School of the Sacred Heart Gallery in NJ.

Assist. Prof. **Roberta Friedman**, MFA (Filmmaking), produced *Kandinsky: A Closer Look*, which was commissioned by the Guggenheim Museum and ran in conjunction with the Kandinsky retrospective at the Guggenheim from November 2009-January 2010. Friedman's video installation, *49 Waltzes for the Gated City*, was screened at the Montclair Art Museum, NJ in April 2010. The Millenium Film Workshop held a two-evening film retrospective of her work in December 2009. She was associate producer on the film, *A Kiss for Jed Wood*, produced by the Irish Film Board and now completed, and received a \$5000 grant from the Academy of Motion Pictures, a grant from Global Education to shoot a video piece in Graz, Austria, and a grant from the Essex County Arts Council for an installation show at the Montclair Art Museum.

Prof. **Nancy Goldring**, MA (Drawing), had a solo exhibition, *The End of Print Culture*, at the European Institute, Columbia University in NYC and also co-curated the show. She was in the group exhibitions, *Antidote* at Vergne Art Fair in NYC, and *Haiti Benefit* at Gallery 138 in NYC. Professor Goldring contributed the article, "In Good Hands," *The Architects' Newspaper*, NYC, and "Nancy Goldring," an interview about her work published in *La Repubblica*. Goldring continues to be a monthly correspondent for *PresST.Magazine*, a cultural critique of art and architecture based in Rome, Italy.

Assoc. Prof. **Scott Gordley**, MFA (Animation/ Illustration), had solo exhibitions at Gallery 51 in Montclair, NJ, and at Hanafin Gallery in New London, CT. He presented the paper, "The Aesthetic Moment," at the Arts in Society Conference in Venice, Italy, and the paper, "Teaching the Autistic Artist," at the International Conference on Learning in Barcelona, Spain. Professor Gordley was also commissioned by the Hanafin Corporation for the painting, "House of Diarmuid," and by Husky Trail Press for the book cover illustration to *View from the Snow Globe: A Journey Through Cancer and Chemo*.

Adjunct Prof. **Karen Guancione**, MFA (Foundations), had a group show, *Piccole Belle Cose: Small Beautiful Things*, at the Garibaldi-Meucci Museum on Staten Island, NY.

Assistant Prof. **Dorothy Heard**, PhD (Art Education), presented the paper, "The Aesthetic in Nurturing Pedagogy: Reflective Teaching as Care of Self and Caring for Others," at the NNER 2009 Annual Conference in Bellevue, WA. She was co-presenter, with Mary Ellen Finch, et. al., of the paper, "The Arts in Teaching and Teacher Education Initiative: Looking Back and Into the Future," at the same conference.

Annual Institutional Profile of Montclair State University, 2010

Assist. Prof. **Anthony Inciong**, MGD (Graphic Design), presented the paper, “Gilt Letters: Design, Wonder, and Optimism,” at the 8th Hawaii International Conference on Arts and Humanities.

Half-Time Prof. **Wobbe Koning**, MFA (Animation/Illustration), chaired the annual NYC Metropolitan Area College Computer Animation Festival—MetroCAF 2009—organized by the New York City chapter of ACM SIGGRAPH.

Prof. **Pat Lay**, MFA (Ceramics), had the group shows *Essex Exposed 6* at Pierro Gallery in South Orange, NJ (where she received the Juror’s Choice Award), *It’s a Wonderful 10th* at Sideshow Gallery in Williamsburg, NY, and *Splice* at Distillery Gallery and Artspace in Jersey City, NJ. Two of her works, a sculpture and a collage, were acquired by the Montclair Art Museum for their permanent collection.

Assist. Prof. **Abby Lillethun**, PhD (Fashion Studies), co-authored the refereed proceeding, “Identification, Characterization, and Care of Mud-coated Silks from Southeast China and Southeast Asia” in *Postprints: Textile Group at the 37th Annual Meeting of the American Institute for Conservation of Historic and Artistic Works* (Los Angeles, May 19-22, 2009), and authored two encyclopedia entries, “Textiles of Central and Southwest Asia” and “Trade, Textiles, and Dress in Central and Southwest Asia” in *Central and Southwest Asia, Vol. 5, Berg Encyclopedia of World Dress and Fashion* (Oxford and New York: Berg). Lillethun delivered the conference presentation (with abstract) “Nontsikelelo Veleko’s Photography: World Fashion in South Africa,” in *Endyesthai (To Dress): Historical, Sociological and Methodological Approaches, Benaki Museum, Athens, April 9–11, 2010*, Hellenic Costume Society, Peloponnesian Folklore Foundation and the Benaki Museum: Athens, (2010): 24, and (without abstract) “Finding the Flounced Skirt,” in *KOSMOS: Jewellery, Adornment and Textiles in the Aegean Bronze Age, the 13th International Aegean Conference, University of Copenhagen, Danish National Research Foundation’s Centre for Textile Research, April 19–23, 2010*, University of Liège and University of Copenhagen: Copenhagen, (2010): 56.

Prof. **John Luttropp**, MFA (Graphic Design), was a commissioned reviewer for the book *Graphic Design History: A Critical Guide* (Prentice Hall); served on the Art Directors Club of New Jersey Education Committee

Prof. **William McCreath**, MFA (Ceramics), had a group show, *The Dinner Party*, at Fork, etc. in Philadelphia, PA.

Half-Time Prof. **Karl Nussbaum**, BS (Filmmaking), was an Artist Fellowship at the Virginia Center for the Creative Arts. He also received an Artist Fellowship at the Julia & David White Artist Colony in Costa Rica. He was a featured artist/speaker at the Freud Symposium at Clark University, MA.

Assist. Prof. **Winfield Parsons**, PhD (Industrial Design), received a faculty advisor award for his work with BFA Industrial Design senior Brenda Villegas, whose design placed 4th in the National Invitational Road Safety Design Competition hosted at the International Auto Show at the Jacob Javits Center, NYC. Professor Parsons also engineered and fabricated fourteen new display boards, based on Professor **Denis Feigler’s** initial concept design, for use in the Kasser Theatre, and researched, designed, and fabricated ten custom animation drawing stations for the department’s Animation/Illustration program.

Adjunct Prof. **Chiz Schultz**, BA (Filmmaking), films, *Ganja and Hess* and *The Angel Levine* (which he produced), and a feature he developed with Norman Jewison, *The Landlord* (directed by Hal Ashby), recently screened at BAM Cinematek in a tribute to filmmaker

Adjunct Prof. **Marina Shron**, MFA (Filmmaking), Her short film, *X-tina*, was selected and screened this year at festivals including the Cannes Short Film Corner, Festival du Cinema de Paris, New Filmmakers Series at the Anthology Film Archives, and New Fest, NY. Her feature scripts, “Buddha’s Little Finger” (co-written with Associate Professor Anthony Pemberton) and “X-tina” are currently in pre-production.

Prof. **Walter Swales**, MFA (Sculpture), had a solo exhibition, *Wallworks*, at Amos Eno Gallery in Brooklyn, NY, as well as a group show at the same venue.

Adjunct Prof. **Meryl Taradash**, MFA (Foundations), had a solo exhibition, *Light, Wind and the Art of Meryl Taradash*, at the Long Island Children’s Museum from January—May 2010. The show coincided with the permanent installation of her sculpture “Wind Dancing.”

Prof. **Elizabeth Valdez del Alamo**, PhD (Art History), published the entry “Romanesque Art” in *Oxford Bibliographies Online*, (Oxford/ New York: Oxford University Press, 2010), the article “Cristo peregrino y los discípulos de Emaús: modalidades de la fe en los relieves de Silos”, in *¡Quédate con nosotros! Peregrinos y testigos en el Camino*, Acts of the X Jornadas de Teología (Sept. 7-9, 2009), vol. 30 of *Collectanea Scientífica Compostellana*, Instituto Teológico Compostelano, Santiago de Compostela, Spain, 2010, pp. 175-90, and a review of Kirk Ambrose, *The Nave Sculpture of Vezelay: The Art of Monastic Viewing*. Studies and Texts vol. 154. Toronto: Pontifical Institute of Medieval Studies, 2006, for CAA Reviews on-line (www.caareviews.org), March 2009. She was co-editor, with Stephen Lamia, of the International Census of Dissertations in Medieval Art for the web site of The International Center of Medieval Art, 2008-2011 (www.medievalart.org/htm/resources.html). Her book, *Palace of the Mind: The Cloister of Silos and Spanish Sculpture of the Twelfth Century*, is in press at Brepols, Turnhout, Belgium, for 2010 (submitted October 2009).

Adjunct Prof. **Richard Vetere**, MA (Filmmaking), He has an original TV pilot under option by producer Jack Grossbart at Fox Studio, and was commissioned to write the stage adaptation of the classic film *Rear Window*—it was given a reading in Los Angeles at the Hayworth Theater, titled “Alone.” His original book to the musical *100 Years into the Heart* was given a production at the 4 Wall Theater in Bloomfield, NJ, and his second novel, *Baroque*, was published by Bordighera Press, CUNY. His stage play, *Caravaggio*, has been translated into Italian and will be performed on tour in Rome, Milan, and Naples in Summer 2010. Professor Vetere produced and co-wrote a short film, *You & Me*, with director Eddie Sheih, with a premiere at the Pan American Short Film Festival in NYC in May 2010. His play, *Meatball Hero*, was selected as one of the best ten-minute plays of the year and will be included in the anthology published by Smith & Kraus. His new play, *Last Day*, was giving a staged reading at the Focus Theater in Dublin and his play, *Ersatz* was given a reading at the Barrow Group Theater in NYC.

Prof. **Anne Betty Weinshenker**, PhD (Art History), published the articles, “A Mausoleum by Michel-Ange Slodtz: Visible and Invisible Components,” in *Mediterranean Studies*, 18, 2009, and “Resemblance, Reality, and Revenge: Nicola Van Houbraken’s Portrait of Francois Riviere,” in

Vendetta: Essays on Honor and Revenge, ed. Giovanna Summerfie (Cambridge Scholars Publishing, in press).

BROADCASTING

Prof. **Larry Londino**, PhD (Television Production), *Tiger Woods: A Biography*, 2d Edition, ABC-CLIO Publishing Company. May 2010.

Assist. Prof. Beverly Peterson, MA (Documentary), *2010 Global Ed award. **Patricia Piroh**, MA (Television Production), Completed approximately 15 *Carpe Diem* programs, which aired on Comcast and Cablevision. Assist. Prof. **Marc Rosenweig**, MS (Journalism Ethics) Honored with the 2010 L.J. Hortin Distinguished Alumnus Award from undergraduate alma mater, Ohio University's E.W. Scripps School of Journalism.

Assoc. Prof. **David Sanders**, PhD (Sound Design), produced National Music Council's 2010 *Leadership in Music Symposium*. Produced the National Music Council's 29th annual American Eagle Awards; Represented the National Music Council of the United States at the 2009 International Music Council "World Forum on Music" and General Assembly in Tunis, Tunisia. Received a global education grant to cover part of the expenses for this conference; Produced National Music Council's 2009 *Leadership in Music Symposium*. Produced an episode of *Carpe Diem* focusing on arts and cultural exchange as a way to promote peace and good will between peoples and nations. co-produced a second episode of *Carpe Diem* focusing on current trends in adolescent literature with Professor Erik Jacobson.

COMMUNICATION STUDIES

Assoc. Prof. **Todd Kelshaw**, PhD (Organization Communication), published three book chapters, two of them co-written with Prof. Lemesianou and with Prof. F. Lazarus.

Assoc. Prof. **Christine Lemesianou**, PhD (Global Communication), published a book chapter co-written with Prof. Kelshaw.

MUSIC

In summer 2009, Prof. **Robert Aldridge**, DMA (Theory/ Composition), was Composer in Residence at the Brevard Music Festival (NC) for the fourth consecutive year. Conductor **Keith Lockhart** led a performance of Aldridge's *Violin Concerto* which was broadcast on National Public Radio. In April 2010, his cantata received its world premiere with the Topeka Symphony.

Adjunct Prof. **Valerie Bernhardt**, MM (Voice), February, 21, 2010 Soprano soloist: *Schubert ! Mass No. 6 in E Flat* with St. Cecilia Chorus, David Randolph, conductor. May 8, 2010 title role of Aida with Coro Lirico, Jason Tramm, conductor. May 15/23, 2010 soprano soloist: *Verdi's Messa di Requiem* with Greenwich Choral Society, Paul Mueller, conductor

Adjunct Prof. **Nancy Billman**, MM (French Horn), played for the Tony-nominated production and recording of "Finian's Rainbow" on Broadway, performed with the Orchestra of St. Luke's with John Adams, Roger Norrington and Christian Zacharias, and toured with Peter Gabriel.

Assoc. Prof. **Heather Buchanan**, MM (Choral Ensemble) with University Singers: recording on ECM in November 2009 with Meredith Monk & Company Songs of Ascension due for release in early 2010-11.

Adjunct Prof. **Patrick Burns**, MM (Music Theory), completed 24th year as founding director of the Bloomfield Youth Band. Premiered commissioned works with the MSU Wind Symphony, the Ohio Northern University Symphonic Band and the Bel Air (MD) Community Band. Seven newly published pieces for symphonic band released this year, including four with his new company, Bandworks Publications (www.bandworkspublications.com). Guest conducting appearances with the Ohio Northern University Bands, and public school and adult community bands in Pennsylvania, Maryland and throughout New Jersey.

Adjunct Prof. **Robert Butts**, DMA (Introduction to Music): September—Conducted the Brahms Second Symphony with the Berlin Sinfonietta in Berlin. September—Began term as Artistic Director for Opera at Florham. October—Conducted Harry Searing in acclaimed performance of Weber's Bassoon Concerto, with the Baroque Orchestra of New Jersey. November—Conducted pianist Paul Zeigler in performance of Chopin's *Piano Concerto #2* with The Baroque Orchestra of New Jersey in a concert also featuring Zephyrs Winds performing Mozart's Sinfonia Concertante. December—Received DMA in Conducting from the American Conservatory of Music. February—Filmed segment for independent film *100 Years Too Late*, ECM Enterprises, as consulting musicologist March—Conducted The Baroque Orchestra of New Jersey Family Concert featuring premiere of his composition *Winter Moods I. March*—Directed The Pearl and Julius Young Rising Stars Music Competition. April—Premiered his composition *Five Movements for Mixed Consort* at In Mid Air Productions performance: *A Little Madness in the Spring*. April—Was named Music Director for In Mid Air Productions. April—Was named conductor for OTC New York. May—Composed incidental music for production of *Midsummer Night's Dream* production at the College of Saint Elizabeth. May—Conducted Baroque Orchestra of New Jersey performance of Beethoven's Seventh Symphony and Mahler's Ruckert Lieder, which he orchestrated for reduced orchestra.

Adjunct Prof. **Paul Cohen**, DMA (Sax), October—Performed with the Greenwich Symphony (Symphonic Dances of Rachmaninoff) Performed on 4 different saxophones (sopranino, soprano, alto, tenor) on two different works with the Plainfield Symphony (music of Ravel and Pautza). November—Presented lecture/ demonstrations on sopranino, soprano and alto saxophones at the American School in London Artist-in-residence at the Royal Welch Conservatory of Music and Theater in Cardiff Wales. December—Performance of the Double Concerto (soprano and alto saxophones) for Saxophones and Wind Ensemble by William Latham, Brooklyn Conservatory, Publication by Boosey and Hawkes of Cohen's arrangements of Copland's Piano Blues, Suite from Our Town, Simple Gifts. January 2010—Release of CD called Sound Paintings by the North/South Consonance Chamber Orchestra (N/S R 1052). PC is playing the saxophone solos in Reflections VII - To Music by Dinos Constantindes. May—Performance of *Concerto for Alto Saxophone* by Karl Husa, Aaron Copland School of Music, Queens, NY Solo recital May 10, 2010 Leshowitz Recital Hall - Sonata for Tenor Saxophone (2nd performance) by Steve Cohen (MSM Alum); Original version of Copland's "Quiet City" (1939 chamber suite) (3rd performance); With the New Hudson Saxophone Quartet, the premiere of Robert Sirota's *Diners* plus other works celebrating the fall 2010 release of their Naxos solo CD

Annual Institutional Profile of Montclair State University, 2010

Prof. **Lisa DeLorenzo**, EdD (Music Education), October—Presentation for the National Network for Educational Renewal in Bellevue, Washington "The Chicken and the Egg: Preparing Teachers, While Simultaneously Renewing Urban School Sites." December—Presentation to orchestra students at Arts High, Newark "J.S. Bach's Brandenburg Concerto #3." January—Presentation to the music teachers in the Paramus School District "A Practical Look At the Orff Approach: Part 1." February—(1) Presentation to harp students at Cicely Tyson High School (E. Orange) "Shostakovich: The Man and His Life" (2) Presentation at the New Jersey Music Educators Association in E. Brunswick "Masterclass for Music Teachers: Teaching as an Artistic Process (3) Presentation to the MSU Collegiate Chapter of the Music Educators National Conference "Red Riding in the Hood." March—(1) Presentations to both harp students at Cicely Tyson and Arts High; "Shostakovich: Symphony #10" (2) Presentation to the music teachers in the Paramus School District "A Practical Look At the Orff Approach: Part 2." April—Sponsored an on-campus "Teacher's Day" with students from Cicely Tyson and Arts High.

Assist. Prof. Laura Dolp, PhD (Music History), published an article, "Viennese 'Moderne' and its Spatial Planes, Sounded" in the spring issue of the journal *19th-Century Music*.

Prof. **Karen Goodman**, MS (Music Therapy), Publication: Kaufman, D. L. & Goodman, K.D. (2010) "Cracking up and back again: Transformation through music and poetry." In Z. Li & T.L. Long, (Eds.) "The Meaning Management Challenge: Making Sense of Health, Illness and Disease," Oxford, UK: Inter-Disciplinary Press, pp117-129.

Adjunct Prof. **Lisa Hogan**, MA (Introduction to Music), featured in the "IUP Indiana University of Pennsylvania Ninth Festival of Women Composers."

Assoc. Prof. **Paul Hostetter**, MM (Director of Orchestral Studies/Ensemble) completed a two week, seven city tour of China conducting orchestras in several cities including Shanghai and Nanjing over the New Year's holidays. He conducted four concerts with the Colonial Symphony featuring performances of Bernstein's *Candide* with artists of the Metropolitan Opera, new choreography to Copland's *Appalachian Spring* with the NJ Dance Theatre Ensemble, a world premiere by 2009 Pulitzer Prize Runner-up Harold Meltzer, and a collaboration with bestselling author Alison Larkin, in addition to numerous educational and therapeutic performances with partners including the Carol G. Simon Cancer Center. He conducted several premieres at Symphony Space with the acclaimed Sequitur Ensemble and a recording of the music of University of Pennsylvania faculty member Anna Weesner; conducted performances by the Big Broadway Band.

Accompanist. **Soyeon Kim**, DMA (Music Performance), February 2010—Princeton Symphony Orchestra Chamber Series. 2010 staff pianist for entrance audition for Manhattan School of Music and Mannes School. March—Water for *Haiti Benefit Concert*, Alice Tully Hall, Lincoln Center. May—Olympic Challenge Competition judge. May—Manhattan Summer Voice Festival vocal coach and pianist coordinator

Assoc. Prof. **Jeffrey Kunkel**, EdD (Music Education/Jazz, In March 2010, he hosted vocalist Jean Rohe, flutist Mark Weinstein and Brazilian percussionist Rogerio Boccato, along with MSU jazz bass instructor Bill Moring, in a program of Kunkel's originals, and classic Brazilian jazz.

Adjunct Prof. **David Lopato**, BA (Jazz), Early 2010—released a solo piano CD of all original

compositions entitled "Many Moons" on Global Coolant Records.

Adjunct Prof. **Anthony Mazzocchi**, MM (Trombone). In the Fall, Mr. Mazzocchi was a soloist with the MSU Wind Ensemble, performing Joseph Turrin's "Fandango" with Charles Bumcrot (trumpet professor).

Assoc. Prof. **Lori McCann**, DMA (Voice), Artistic Producer for the Sister Cities Concert: Montclair, NJ and Graz, Austria 60th Anniversary. Leshowitz Recital Hall. April 15, 2010, Produced VoiceNight-Recital of John J. Cali Voice Students, Leshowitz Recital Hall. McCann gave a vocal recital of Spanish and Latin American Music for the Cincode Mayo Concert sponsored by the North South Consonance Concert Series, Christand St. Stephen's Episcopal Church, Manhattan, NY.

Adjunct Prof. **Linda McKnight**, BM (Double Bass), appeared as guest double bass soloist with the Midland Park (NJ) High School Band, conducted by MSU alumnus David Marks (BA Mus. Ed., 1997), at the winter band concert on January 21, 2010.

Adjunct Prof **Darren O'Neill**, MA (Guitar), Published a featured article in the latest edition of Soundboard magazine (Vol. XXXVI (36), No. 1-2010): Darren O'Neill: A Survey of Select Nineteenth-Century Chamber Works by Guitarists of the Period Soundboard is a magazine published quarterly by the Guitar Foundation of America (GFA).

Prof. **Ruth Rendleman**, EdD (Piano/Theory), performed the Stravinsky Piano Concerto with the MSU Wind Symphony under the direction of Thomas McCauley.

Adjunct Prof. **Holli Ross** led her jazz vocal students in performance during an evening of standards at Trumpets Jazz Club in Montclair in April 2010.

Assist. Prof. **Marissa Silverman**, PhD (Music Education), Publications: "Sites of social justice: Community Music in New York City," *Research Studies in Music Education*, 31:2, 178-192, 2009. Also, "Rethinking Music 'Appreciation' Visions of Research" in *Music Education*. Vol. 13: <http://www.usr.rider.edu/%7Evrme/>.

Adjunct Prof **Gwendolyn Toth**, DMA (Harpsicord), conducted Monteverdi's Vespers of 1610 in acclaimed, standing-room only performances in January, at the Washington National Gallery of Art and at Church of St. Ignatius Loyola in New York City

Adjunct Prof **Tanya Witek**, DMA (Flute), in March, was featured in renowned flutist, Carol Wincenc's Ruby Anniversary concert celebration at the Peter Jay Sharp Theater at The Juilliard School.

Accompanist **Meg Zervoulis**, BA (Piano) was selected as one of the Musical Directors to be a part of the inaugural Musical Direction Intensive at Goodspeed Opera House.

THEATRE&DANCE

Assist. Prof Michael Allen, MFA (Stage, Production, Arts Management), has written and directed three original children's plays, with the Gifted and Talented Program here at MSU.

Assoc. Prof. **Jorge Cacheiro**, MFA (Directing and Acting), On July 10, the director, Montclair State University Jorge Cacheiro, and the playwright, Jorge Cortiñas, working with Cuba's Rita Montaner Theater Company, premiered Cortiñas' play, *Blind Mouth Singing*, at the El Sotano Theater in Havana. Founded the New Works Initiative which will bring theatre and dance artists to MSU to work with MSU theatre and dance majors.

Assoc. Prof. **Bruce Clay James II**, MFA (Musical Theatre), honored by the NHTA, a nationally recognized and award winning organization, for Outstanding Choreography in the "Professional Category" for his work on *The Producers* for the Mt. Washington Valley Theatre Company this past summer.

Prof. **Lori Katterhenry**, MFA Choreography/ Modern Dance), Artistic Director for all three dance department dance concerts and initiated dance programmatic activities for AY 2010.

Assoc. Prof. **Susan Kerner**, MFA (Directing and Acting), In addition to a full season of MSU and professional directing, Susan Kerner directed once again at the prestigious American Academy of Dramatic Arts New York City. Kerner has also created and produced the second annual Theatre Day for High School Teachers, where over 80 high school theatre teachers attended MSU Workshops and Clinics.

Half-time Prof. **Nancy Lushington**, BA (Dance/ Ballet), has been commissioned to set May O'Donnell's *Pursuit of Happiness* on NACRE Dance Company in upstate NY.

Assist. Prof. **Elizabeth McPherson**, PhD (Dance Education), Articles and Reviews 2010: "Donald McKayle and the Power of Belief" for the column "Our Teachers are the Salt of the Earth." *Attitudes: The Dancers Magazine*, Spring 2010: 8-11. Review of the book *Movable Pillars* by Katja Kolcio. *Attitudes: The Dancers Magazine*, Spring 2010: 60-61. Review of the film *40 Years of One Night Stands: The Royal Winnipeg Ballet*, *Attitudes: The Dancers Magazine*, Spring 2010: 52-53. Review of *Thunderbird American Indian Dancers*. *Attitudes: The Dancers Magazine*, Spring 2010: 28-29. "Building Bridges Through Dance in an Urban Systemic Initiative," *Journal of Dance Education*, vol. 10, Number1: 22-24. "Profile of David K. Manion," *The Martha Hill Dance Fund Newsletter*. Spring 2010, Issue 3: 2-3. "Joseph H. Pilates: The Man Behind the Method," *Dance Teacher Magazine* March 2010: 62-64. Review of "Past, Future, Now: Dance Exhibit at the 92nd Street Y," *Attitude: The Dancers' Magazine* Winter 2010: 8-9. "Growing up Nutcracker or Confessions of a Nutcracker Nut," *Attitude: The Dancers' Magazine* Winter 2010: 36-37. Articles and Reviews 2009: Review of *Celebrating the Ballets Russes in Music and Dance*," *Ballet Review*, Fall 2009:13-15. "Our Teachers are the Salt of the Earth: Alfredo Corvino's Grand Legacy," *Attitude: The Dancers' Magazine* Fall 2009, vol. 23, no. 3: 14-15. Review of 2009 Fall for "Dance Festival: Basil Twist; Monica Bill Barnes & Company; Les Ballets Trockadero de Monte Carlo; and DanceBrazil," *Attitude: The Dancers' Magazine* Fall 2009, vol. 23, no. 3: 26-27. Review of *What I Learned from Balanchine: Diary of a Choreographer* by Gloria Contreras," *Attitude: The Dancers' Magazine* Fall 2009, vol. 23, no. 3: 53. Reprint of Review of the exhibit "Diaghilev's Theatre of Marvels: The Ballets Russes and its Aftermath," *Attitude: The Dancers'*

Annual Institutional Profile of Montclair State University, 2010

Magazine Fall 2009, vol. 23, no. 3: 4. Review of the exhibit *Diaghilev's Theatre of Marvels: The Ballets Russes and its Aftermath*, *Ballet-Dance Magazine* Summer 2009. http://ballet-dance.com/200908/articles/exhibition_diaghilev_20090900_mcperson.html "The Bennington School of the Dance, the Early Home of American Modern Dance," *Dance Teacher Magazine*, September 2009: 78-80. <http://www.dance-teacher.com/sections/teaching/553>.

Assist. Prof. **Debra Otte**, MFA (Costume Design), Publication through costume design of new scripts: "Against the Rising Sea" (Queen's theatre in the Pak), "Rosa Loses Her Face" (Electric Theatre Company) *Deep Water Man* (Stonington Opera). Publication through costume Design: Side Show (Montclair State University). Conferences: Presentation of "Mining the Script for Visual Metaphor" January 2010, KCACTF Region II

Assoc. Prof. **Jane Peterson**, PhD (Theatre History, Criticism, and Literature), "Plays in Performance." 30 dramaturgical essays that accompany the publication of the new NORTON ANTHOLOGY OF DRAMA. Eds. J. Ellen Gainor, et al. New York: Norton, 2009.

Prof. **Linda J. Roberts**, MA (Dance Methods), Coordinator for BFA Dance major program, and rehearsal director for Dance Repertory pieces. Attendance and performance included 92nd Street Y series in New York City.

Assist. Prof. **Erhard Rom**, MFA (Scenic Design), Created Scenic Design for the following productions: Virginia Opera, *The Daughter of the Regiment*; Wolf Trap Opera, *Così fan Tutte*; Virginia Opera, *Don Giovanni*; Vancouver Opera, *Nixon in China*, Canadian Premiere; Maryland Opera Studio, *Shadowboxer*, World Premiere; Cleveland Opera, *Lucia di Lammermoor*; Manhattan School of Music, *The Marriage of Figaro*. Publications include *Opera News*, *Washington Post* and the *Washington Times*. Also interviewed by *Opera America* magazine.

Assist. Prof. **Debbie Savetz**, PhD (Theatre Studies/Acting), Guest Teaching: Instructor, Taller de Autodrama (Autodrama Workshop), Actuación Extrema, Compañía Interestatal de Teatro, Oaxaca, MEXICO, 2010. Instructor, Taller de Actuación (Acting Workshop), Grupo de Teatro Cuauhpanco, Ciudad de las Canteras, Oaxaca, Oaxaca, MEXICO, 2009. Professional Theatre Directing: *More Than A Number* by Sung Rno, "This Is My City" series (created in collaboration with the Center for Immigrant Families), Foundry Theatre, NYC, 2010. *Quetzalcoatl Puddle* by Irela de Villiers, Lark U.S.-Mexico Playwright Exchange, Lark Play Development Center, NYC, 2009. *I Put the Fear of Mexico in 'Em* by Matthew Paul Olmos (Sundance/Time Warner Storytelling Fellow), Lark Play Development Center/INTAR, NYC, 2009. *Phantasmatron* by Daniel Alexander Jones, Creativity Fund Workshop, New Dramatists, NYC, 2009. *Happy* by Sung Rno, New Dramatists, NYC, 2009. *A Wolf Inside the Fence* by Joseph Fisher, New Dramatists, NYC, 2009.

Half-time Prof. **Maxine Steinman**, MA (Dance/ Modern Performances culminated in a 25-minute work called *Sense of Way*, which premiered October 8, 2009. She was also invited to perform in a special program called *Women of the Y: History in the Making* at the 92nd Street Y Harkness Dance Center in December 2009.

SCHOOL OF BUSINESS (SBUS)

Peer Reviewed Journals

Learning & Pedagogical Research

Koppel, N., Berenson, M. (2009). Ask the Audience...Using Clickers to Enhance Introductory Business Statistics Courses. *Information Systems Education Journal (ISEDJ)*, 7(92).

Malaga, R. (2010). Choosing a Wiki Platform for Student Projects – Lessons Learned. *Contemporary Issues in Education Research*.

Malaga, R., Subramanian, R. (2009). Peter and Elaine Moss - Franchisees. *Journal of Business Case Studies*, 5(5), 99-106.

Subramanian, R. (2009). West Michigan Whitecaps. *Business Case Journal*, 16(2), 73-82.

Contributions to Practice

Danila, N., **Jeffers, A.** (2009). Derivatives: An Islamic Perspective. *Journal of International Finance and Economics*, 9(3), 83-90.

DiGabriele, J. (2010). Applying Forensic Skepticism to Lost Profits Valuations. *Journal of Accountancy*, 209(4), 32-39.

DiGabriele, J. (2010). Breaking Up Marital Assets: "A Balance Sheet Act". *American Journal of Family Law*, 24(1), 26-32.

Lashley, M. B., **Jeffers, A.**, Davis, D. (2009). Psycho-Social Impact of Mortgage Foreclosure. *International Journal of Business Research*, 9(6), 58-67.

Lauricella, L. (2009). 2009 New Jersey Year End Tax Planning Gets Even More Complicated. *Journal of State Taxation*, 27(6), 47-50.

Lee, Z.-H., **Lin, B., Yang, J.** (2009). Decision Model and Analysis for Investment Interest Expense Deduction and Allocation. *European Journal of Operation Research*, 200(1), 269-280.

Poon, W. (2009). Principles-Based Approach to Accounting Standard Setting. *National Accounting Journal*, 11(1), 46 - 48.

Yang, J., Jeffers, A. (2009). Overview of the New Accounting Standards of FASB Nos. 141R and 160.. *European Journal of Management*, 9(3), pages 169-174.

Yang, J. (2010). Tax Planning Strategies for Stock-Based Compensation. *Journal of Compensation and Benefits*, 26(3), 5-14.

Yang, J. (2009). Tax Issues of E-Business - Domestic Versus International. *Journal of E-Business*, IX (2009)(1, 2), 52-64.

Yang, J. (2009). The Tax Problems Arising From Bernard Madoff's Ponzi Scheme. *Tax Notes*, 125(5), pages 553-557 (November 2, 2009).

Yang, J. (2009). Amazon Tax Under Challenge. *Journal of State Taxation*, September/October 2009, pages 37-42.

Yang, J. (2009). Tax Planning Strategies for the Victims of Madoff's Ponzi Scheme. *The Journal of 21st Century Accounting*, 9(2), 1-9.

Discipline-Based Scholarship

Cantwell, J., **Zhang, Y.** (2009). The Co-Evolution of International Business Connections and Domestic Technological Capabilities: Lessons from the Japanese Catch-up Experience. *Transnational Corporations*, 18(2), 37-68.

Chatterjee, P. (2010). e-Service Brand Extensions: The Role of Perceived Fit and Category Usage Level on Adoption. *Journal of Service Science*, 3(1), 7-13.

Chakraborty, C., Nandi, B. (2009). Telecommunications Adoption and Economic Growth in Developing Countries: Do Levels of Development Matter?. *Journal of Academy of Business and Economics*, 9(2), 51-61.

Chang, C. (2009). Sourcing Considerations When Inventory Is Present. *International Journal of Business Research*, 9(4), 27-42.

Cho, J., Dansereau, F. (2010). Are Transformational Leaders Fair? A Multi-Level Study of Transformational Leadership, Justice Perceptions, and Organizational Citizenship Behaviors. *Leadership Quarterly*, 21(3), 409-421.

Cho, J., Kim, S. (2009). Procedural Justice and Organizational Citizenship Behaviors: A Social Identity Motive. *International Journal of Business Research*, 9(6), 107-113.

Cho, J., Kim, S. (2009). Procedural Justice and Organizational Citizenship Behaviors: A Social Identity Motive. *International Journal of Business Research*, 9(6), 107-113.

Chung, S., **Narasimhan, R.** (2009). Are Published Annual Reports of Public Companies Still Necessary in the Digital Age?. *Journal of Global Business Development*, 2(1), pp. 32-35.

DiGabriele, J. (2010). The Application of a Predictive S Corporation Premium Model and the Behavioral Considerations in Acquisitions of Private Companies.. *Business Journal For Entrepreneurs*, 2010(1), 1-15.

DiGabriele, J. (2009). Implications of Regulatory Prescriptions and Audit Standards on the Evolution of Forensic Accounting in the Audit Process. *Journal of Applied Accounting Research*, 10(2), 109-121.

Ekeledo, I., Jayachandran, C. (2009). Entry Mode Strategies of International Retailers: A Conceptual Framework and Research Proposition. *International Journal of Business Research/Academy of International Business and Economics (AIBE)*, 9(5).

Ekeledo, I., Jayachandran, C. (2009). Entry Mode Strategies of International Retailers: A Conceptual Framework and Research Proposition. *International Journal of Business Research/Academy of International Business and Economics (AIBE)*, 9(5).

Ferguson, R., Leistikow, D., **Yu, S.** (2009). Arithmetic and Continuous Return Mean-Variance Efficient Frontiers. *Journal of Investing*, 18(3), 62-70.

Ferguson, R., Leistikow, D., Rentzler, J., **Yu, S.** (2009). The Effect of Value Estimation Errors On Portfolio Growth Rates. *Journal of Investing*, 18(2), 69-75.

Kessler, S., Taylor, E., Levine, E., Wiley, J., Kessler, L. (2009). Is a happy nation a productive nation? An exploration of the relationship between job satisfaction and productivity at the national level. *European Journal of International Management*, 2(3), 356-375.

Kim, D.-K., Jung, S., Bae, Y. (2009). The Demand for and Supply of International Business Knowledge. *International Journal of Business Research*, 7(1).

Limbu, Y., Torres, I. M. (2009). The Effect of Product Involvement and Ad Type on Attitudes toward Direct-to-Consumer Advertising of Prescription Drugs. *Journal of Health and Human Services Administration*, 32(1).

Malaga, R. (2009). Web 2.0 Techniques for Search Engine Optimization - Two case studies. *Review of Business Research*, 9(1), 132-139.

Malaga, R. (2009). Taxing E-Commerce Affiliates –The Potential Impact of New York State’s “Amazon Tax”. *Journal of Applied Business Research*, 25(4), 31-35.

Malaga, R., Montano, B., Porter, D., Ord, K. (2009). A New Approach to End-of-Auction Models to Curb Sniping. *Journal of the Operations Research Society*.

Maghrabi, A., **Firoz, N. M.**, Wghdy, A., Crlencic, J. (2009). Islamic Banking and the Future of Interest Free Banking. *Ethics & Critical Thinking journal*, 2009(4). Ozenbas, D., San Vicente Portes, L. (2009). Relationship between GDP Volatility, Idiosyncratic Stock Price Risk and Firms’ Capital Structure: An Explanation within the Financial Accelerator Framework. *The Business Review, Cambridge*, 14(1), 1-8.

Mukherjee, A., Pinto, M. B., Malhotra, N. (2009). Power Perceptions and Modes of Complaining in Higher Education. *The Service Industries Journal*, 29(9).

Ozenbas, D., San Vicente Portes, L. (2009). Relationship between GDP Volatility, Idiosyncratic Stock Price Risk and Firms' Capital Structure: An Explanation within the Financial Accelerator Framework. *The Business Review*, Cambridge, 14(1), 1-8.

Peterson, R. T., Xu, B., Limbu, Y. (2009). The Depiction of Female Models in Sport Television Commercials in the U.S. by Degree of Slenderness: An Appraisal. *Journal of Promotion Management*, 15(1/2), 184-203

Peterson, R. T., Limbu, Y. (2009). The Convergence of Mirroring and Empathy: Communications Training in Business-to-Business Personal Selling Persuasion Efforts. *Journal of Business to Business Marketing*, 16(3), 193-219.

Rawlins, G. (2009). Using Currency Devaluations as a Tool to improve The Trade Balance: The Experience of Central America and the Caribbean.. *Journal of American Business and Economics*, 10(4).

San Vicente Portes, L., Ozenbas, D. (2009). On Balance Sheets, Idiosyncratic Risk and Aggregate Volatility. *Berkeley Journal of Macroeconomics*, 9(1), 1-25.

San Vicente Portes, L. (2009). On the Distributional Effects of Trade Policy: Dynamics of Households Saving and Asset Prices. *Quarterly Review of Economics and Finance*, 49(3).

Stewart, K., **Malaga, R.** (2009). Contrast and Assimilation Effects on Consumers' Trust. *International Journal of Electronic Commerce*, 13(3), 71-94.

Subramanian, R. (2010). *International Journal of Services and Operations Management*. Inderscience, 6(4), 443-451.

Subramanian, R. (2009). Relationship Between Market Orientation and Performance in Family-Owned Firms: a Context-Specific Investigation. *International Journal of Business Innovation and Research*, 3(5), 500-514.

Subramanian, R. (2009). The relationship between market orientation and performance under different environmental conditions: The moderating effect of the top management team's risk taking behavior. *Academy of Strategic Management Journal*, 8, 121-135.

Wang, Y., Stumbo, N. J. (2009). Factors Affecting Quality of life for community-dwelling older adults with a disability: Implications for Therapeutic Recreation Practices and Research. *Annual in Therapeutic Recreation*, 17, 18-30.

Wang, Y., Weston, S. (2009). Distance model of senior tourists: an application of the gis techniques to the analysis of leisure travel distance of seniors. To appear in *Global Digital Business Review*.

Xing, R., Wang, J., Yao, J. (2010). Lessons of Disaster Recovery Learned for Information Systems Management. To appear in *JIIISCRM (International Journal of Information System for Crisis Response and Management, I, In press*.

Xing, R., Yao, J., Wang, J. (2009). Broadband Challenge Facing Global Competitiveness. *International Journal of Society Systems Science (IJSSS)*, 1(3), 293-305.

Yu, S., Kim, S.-H. (2009). Analysis of Business Week Hot-Growth Stocks: Momentum and Fundamental Investment Approaches. *Journal of Asset Management*, 10(3), 192-204.

Yu, S., Webb, G., Tandon, K. (2010). Option Introduction and Secondary Equity Offerings. *Journal of Applied Finance*, 20(1), 47-63.

Yu, S., Rentzler, J., Tandon, K. (2010). Re-examination of the Uncertain Information Hypothesis. *Review of Quantitative Finance and Accounting*, 34(1), 1-21.

Yu, S., Lord, R. A., Webb, G. (2010). The Hot-Growth Companies: How Well Do Analysts Predict Their Performance. *Journal of Economics and Business*, 62(3), 195-219.

Yu, S. (2009). Reinganum's Trading Strategies Revisited: Structuring Profitable Strategies Based on Updated Filter. *Managerial Finance*, 35(4), 357-384.

Yu, S., Webb, G. (2009). The Effects of ETF Splits on Liquidity and Individual Investors. *Managerial Finance*, 35(9), 754-771.

Yu, S., Leistikow, D. (2009). Which Explains an Indexes' Better - Changes in its Own Implied Volatility or a Broader Indexes' Implied Volatility?. *Journal of Investment Management*, 7(3), 66-80.

Other Intellectual Contributions

Contributions to Practice

Aquilino, F. (2009). Attracting Potential Members to the Society. *The Newspaper of the New York State Society of Certified Public Accountants*.

Aquilino, F. (2009). Looking at the Flip-Side of Accounting Students. *The Newspaper of the New York State Society of Certified Public Accountants*.

DiGabriele, J., Filler, M. G. (2009). Considering the Market Approach in Matrimonial Valuations: The Application of Regression Analysis to the Direct Market Data Method. *Forensic Accounting in Matrimonial Divorce Engagements*, 1(1), 153-194.

DiGabriele, J., Simoes, G. V., Zaku, L. (2009). The Separation Anxiety of Marital Assets: Preparation of the Marital Balance Sheet. *Forensic Accounting in Matrimonial Divorce Engagements*, 1(1), 57-68.

Jeffers, A. (Presenter & Author), IABE - 2009 Annual Conference, "Psycho-Social Impact of Mortgage Foreclosure," International Academy of Business and economics, Las Vegas, Nevada. (October 2009).

Kapor, M. (2009). Rocky Road to Democracy- Comparative Study of Albania and Serbia.

Kapor, M. (2009). The Effect of International Capital Movements on Structural Imbalances in the World Economy.

Koppel, N. (2009). Book Review for "Engineering Service Oriented Systems: A Model Driven Approach", by Bill Karakostas and Yannis Zoraios. Hershey, PA: International Journal of Information Systems in the Service Sector (IJISSS).

Lord, R. A. (2009). The Interrelationship of Carbon Dioxide Emissions with Technological and Economics Development. 11th International Conference of the Society for Global Business and Economic Development.

Maghrabi, A., Firoz, N. M., Taghy, R., Waghdy, A., Sintim, H., Gunduz, M. (2009). ABC of Interest Free Banking. Conflict Resoulation & Negotiation, 2009(4).

Maghrabi, A., Firoz, N. M., Wghdy, A., Taghy, R., Ali, O. (2009). Marketing Interest Free Islamic Banking to the Muslim World. Business Journal for Entrepreneurs, 2009(4).

Peterson, R. (Presenter & Author), **Berenson, M.** (Presenter & Author), Annual Meeting of the Decision Sciences Institute, "What is 'Normal' Grading Among Faculty Teaching the Same Course?," Decision Sciences Institute, New Orleans, LA. (November 2009).

Peterson, R., Berenson, M. (2009). What is "Normal" Grading Among Faculty Teaching the Same Course?. Hackensack, New Jersey: World Scientific Publishing Co. Inc.

Peterson, R., Berenson, M. (2009). What is "Normal" Grading Among Faculty Teaching the Same Course?. Hackensack, New Jersey: World Scientific Publishing Co. Inc..

Samuels, J. A Comparison of Two Operating Leisure Oriented Mega-Malls and the Xanadu Project: Looking into the Chrystal Ball. SOBIE.

Taghi, R., Firoz, N. M., Kwarteng, A. P. (2010). Effect of culture on the relative wealth of countries: An international study. To appear in the International Journal of Management, vol. 27(no. 2).

Learning & Pedagogical Research

Berenson, M., Annual Meeting of the Decision Sciences Institute, "Putting a Quart into a Pint Pot," Decision Sciences Institute & MSMESB, New Orleans, LA. (November 2009).

Berenson, M., Joint Statistical Meetings, "Statistics in Business Schools: The Future?," American Statistical Association, Washington, DC. (August 2009).

Berenson, M. (2009). A Confidence-Interval Approach to Teaching Inference in a Core-Required, B-School Statistics Class (vol. 40). Atlanta, GA: Proceedings of the 2009 Annual Meeting of the Decision Sciences Institute, New Orleans, LA.

Chang, C. Instructor's Manual to accompany Fundamentals of Cost Accounting 3e (pp. 429). McGraw-Hill.

DiGabriele, J. (Presenter & Author), **Douma, I.** (Presenter & Author), CTLA, "Teaching Tips for Group Work," American Accounting Association, New York City. (August 1, 2009).

Hollister, K., Koppel, N., 2009 Annual Meeting of the Decision Sciences Institute, "Using a Knowledge Toolbox for Closing the Loop on Assessment of Student Learning," New Orleans, LA. (November 2009).

Koppel, N., 2009 Annual Meeting of the Decision Sciences Institute, "Using Clickers to Collect Real Time Data in a Business Statistics Course," New Orleans, LA. (November 2009).

Malaga, R. (2009). Choosing a Wiki Platform for Student Projects – Lessons Learned. Las Vegas, NV: Clute College Teaching and Learning Conference.

Mukherjee, A., Academy of Management Annual Meeting, "Can Internal Marketing Improve Nurse Retention in Hospitals?," Academy of Management, Chicago. (August 2009).

Mukherjee, A., AMA Summer Marketing Educators Conference, "Effects of Retail Crowding on Shopping Satisfaction and Patronage Intentions of Asian Consumers," AMA, Chicago. (August 2009).

Narasimhan, R., Annual Meeting, "Should a financial literacy course be required in the General Education Program for all college students?," American Accounting Association Mid-Atlantic Region, Philadelphia, PA. (April 23, 2010).

Narasimhan, R. (Presenter & Author), Annual Meeting, "Time to incorporate XBRL into the Accounting Curriculum," American Accounting Association, New York City, NY. (August 2009).

Narasimhan, R. (Presenter & Author), Annual Meeting, "Using the Case Study Method in Lieu of Lecturing in Teaching the Principles of Financial Accounting Course," American Accounting Association, New York City, NY. (August 2009).

Narasimhan, R., 2009 International Fraud and Forensic Accounting Education Conference, "Integrating ACL into Courses for Forensic Accounting or Fraud," West Virginia University, Las Vegas, Nevada. (July 2009).

Peterson, R. (Presenter & Author), **Berenson, M.** (Presenter & Author), **Misra, R.** (Presenter & Author), Annual Meeting of the Decision Sciences Institute, "An Evaluation of Factors Regarding Students' Assessment of Faculty in a Business School," Decision Sciences Institute, New Orleans, LA. (November 2009).

Romero, S. (Presenter & Author), ICERI 2009 The international conference of education, research and innovation, "Question order effect of student quizzes in introductory Financial Accounting courses," Madrid, Spain. (November 18, 2009).

Romero, S. (2009). Question order effect of student quizzes in introductory financial accounting courses. International Conference of Education, Research and Innovation (ICERI 2009).

Zamanian, Z. (Presenter & Author), International Academy of business and public administration disciplines (IABPAD), "Foreign Investment in US real estate," Dallas, TX. (April 22, 2010).

Discipline-Based Scholarship

Berenson, M. (2010). Business Statistics. New York, NY: Springer's International Encyclopedia of Statistical Science.

Cantwell, J. A., Zhang, Y. (2009). The Innovative Multinational Firm: The Dispersion of Creativity, and its Implications for the Firm and for World Development (pp. 45-67). Images of the Multinational Firm (edited by Collinson, S. and Morgan, G.): Wiley Blackwell.

Chakraborty, C., Info CPRSouth4, "telecommunications Infrastructure, Development Stages and Economic Growth: Evidence from a Panel of Developing Countries," InfoCPR, Negombo, Sri Lanka. (December 2009).

Chatterjee, P. (Presenter & Author), 2009 Academy of Marketing Science Retailing Conference, "Differential Consumer Response to Bundled and Partitioned Prices – The Role of Shipping Charges," Academy of Marketing Science, New Orleans, USA. (September 30, 2009).

Chatterjee, P. (Presenter & Author), Academy of Marketing Science Retailing Conference, "Multiple-Channel and Cross-Channel Shopping Behavior," Academy of Marketing Science, New Orleans, LA. (September 30, 2009).

Chatterjee, P. (2009). Differential Consumer Response to Bundled and Partitioned Prices – The Role of Shipping Charges (vol. 12, pp. 70-75). New York: Proceedings of the 2009 Academy of Marketing Science Retailing Conference.

Chatterjee, P. (2009). Multiple-Channel and Cross-Channel Shopping Behavior (vol. 12, pp. 76-81). New York: Proceedings of the 2009 Academy of Marketing Science Retailing Conference.

Chaudhury, S. R., Limbu, Y. (2009). Consumer Deskillling and the Credit Card Industry: An Intergenerational Perspective. The 20th Anniversary Marketing & Public Policy Conference Proceedings.

Chen, Q., Xing, R., Wang, J. (2009). Survival Data Mining (pp. 1896-1902). Encyclopedia of Data Warehousing and Mining, 2nd Edition,.

Cho, J., Kessler, S., the Society for Industrial and Organizational Psychology (SIOP), "It's All about the Leader: The Impact of Multi-Level Identification on Organizational Citizenship Behavior and Turnover Intentions," Georgia, Atlanta. (April 2010).

Cho, J., Kim, S., International Academy of Business and Economics (IABE), "Procedural Justice and Organizational Citizenship Behaviors: A Social Identity Motive," Las Vegas. (October 2009).

Colucci, W. (Presenter & Author), New Jersey Communication Association, "From the Tower of Babel to CSI: What are the modern stories about technology telling us? –A look at TV science fiction and detectives shows," Madison, NJ. (April 2010).

Colucci, W. (Presenter & Author), International Business and Economics Research, "Impact of face to face meetings in a hybrid distance education course," Clute Institute, Las Vegas, NV. (October 2009).

Colucci, W., Koppel, N. (2009). Impact of the Placement and Quality of Face-to-Face Meetings in a Hybrid Distance Learning Course. Las Vegas, NV: Clute Institute International Business & Economics Research (IBER) Conference.

Colucci, W., Koppel, N. (2009). Impact of the Placement and Quality of Face-to-Face Meetings in a Hybrid Distance Learning Course. Las Vegas, NV: Clute Institute International Business & Economics Research (IBER) Conference.

Jensen, R. (Presenter & Author), Bowman, N. (Author Only), Wang, Y. (Author Only), Larson, B. (Author Only), the Fourth Summit on Communication and Sport, "Does the Public Support Ads on Professional Sports Uniforms in the USA? Preliminary Results of," Cleveland, OH. (March 19, 2010).

Jeffers, A., 11th Annual Business & Economics Society (NBES) 2010 Conference, "Analyzing Financial Statements Under International Financial Reporting Standards (IFRS): Opportunities and Challenges," National Business & Economics Society (NBES), Kauai, Hawaii. (March 2010).

Jeffers, A., IABE-2009 Annual Conference, "Derivatives: An Islamic Perspective," International Academy of Business & Economics, Las Vegas, Nevada. (October 2009).

Jeffers, A., IABE-2009 Annual Conference, "The SEC's Failure & Investors Relief in the Madoff Ponzi Scheme," International Academy of Business and Economics, Las Vegas, Nevada. (October 2009).

Jeffers, A., American Accounting Association Annual Meeting, "Development of a Regulatory & Supervisory Framework to Protect Investors & Circumvent Financial Scams," American Accounting Association (AAA), New York City, New York. (August 4, 2009).

Kay, M. (2010). Review of Our Daily Meds by Melody Peterson (3rd ed., vol. 3, pp. 5). International Journal of Pharmaceutical and Health Care Marketing.

Kessler, S. (Presenter & Author), **Cho, J.** (Author Only), **Xia, J.** (Author Only), Hunt, J. (Author Only), Stelluto, G. (Author Only), Ropo, A. (Author Only), The 3rd Research Symposium of the Society for Global Business and Economic Development (SGBED), "Playing a New Tune: Lessons from Examining Leadership in Orchestras," Barcelona, Spain. (June 2010).

Kessler, S., Nord, W. (Author Only), Nixon, A. (Author Only), James, J., Acker, S., Academy of Management, "What do we know about organic/mechanistic structures? Not as much as we'd like!," Academy of Management, Chicago, Illinois. (August 2009).

Kim, S., Cho, J., International Academy of Business and Economics (IABE), "The Effect of Perceived Organizational Support on Affective Organizational Commitment through Trust in Organizations in Service Sector," Las Vegas. (October 2009).

Kim, S., Lin, L.-C., Wang, Y. (2009). Data mining applications in the hospitality industry (vol. I, pp. 406-410). *The Encyclopedia of Data Warehousing and Mining*.

Limbu, Y., Huhmann, B. A. Are Humor and Celebrity Endorsers Effective for Direct-to-Consumer Advertising?. *Society for Marketing Advances Proceedings*.

Malaga, R. (2010). Search Engine Optimization – Black and White Hat Approaches (vol. 78, pp. Chapter 1). *Advances in Computers*.

McDowall, S. (Author Only), **Lin, L.-C.** (Presenter & Author), The Annual Council on Hotel, Restaurant, and Institutional Education Conference, "Importance-Performance Analysis of Bangkok as a City," San Francisco, CA. (August 2009).

Meziani, A. Seddik (Presenter & Author), Annual London Conference on "Money, Economy and Management", "Assessing international small-caps within a core-satellite investment strategy", Imperial College, London, UK. (July 9, 2009).

Misra, R. (2009). *The Use of Outsourcing As a Business Strategy: a case study* (vol. 1). Hersey, PA: Business Science Reference.

Ozenbas, D., San Vicente Portes, L., Midwest Finance Association, "Idiosyncratic Volatility and Capital Structure: Firms' Response to Larger Risk." (February 2010).

Ozenbas, D., San Vicente Portes, L., Economics & International Business Research Conference, "KEYNOTE ADDRESS: Relationship between GDP Volatility, Idiosyncratic Stock Price Risk and Firms' Capital Structure: An Explanation within the Financial Accelerator Framework." (December 2009).

Ozenbas, D., Montclair State University Brown Bag research series, "Using the Wharton Research Database (WRDS), CRSP and Compustat databases." (December 2009).

Romero, S., AAA Annual Meeting, "Technology adoption in auditing," American Accounting Association, New York. (August 2009).

Sintim, H. (Presenter & Author), **Lord, R. A.,** 9th Global Conference on Business and Economics, "Firm Size and Industry Effects on Market Reaction to Changes in the Price of Federal Funds Futures.," *International Journal of Business and Economics*, Cambridge University, UK.. (October 17, 2009).

Sintim, H. (Presenter & Author), **Lord, R. A.,** 9th Global Conference on Business and Economics, "Firm Size and Industry Effects on Market Reaction to Changes in the Price of Federal Funds Futures.," *International Journal of Business and Economics*, Cambridge University, UK.. (October 17, 2009).

Treadway, D. (Presenter & Author), Breland, J. (Author Only), **Cho, J.** (Presenter & Author), Duke, A. (Author Only), **Yang, J.** (Presenter & Author), Academy of Management (AOM), "When Performance on the Job is Just Not Enough: Role of Political Skill in the Longitudinal Performance – Power Relationship," Chicago. (August 2009).

Usmen, N. (Author Only), Markowitz, H. M. (Presenter & Author), Tessitore, A. (Author Only), Fred Arditti Innovation Award Ceremony, "Models for Stock Return Distributions," CME Group Center for Innovation, Chicago. (November 14, 2009).

Wang, J., Hu, X., **Hollister, K.,** Dan, Z. (2009). A Specialized Evaluation and Comparison of Sample Data Mining Software. Ubiquitous Developments in Knowledge Management: Integrations and Trends (Advances in Knowledge Management Series).

Wang, Y., Weston, S., Lin, L.-C., Kim, S. (2009). Segmenting the mature travel market with data mining tools (vol. IV, pp. 1759-1764). The Encyclopedia of Data Warehousing and Mining (2nd Ed.).

Wang, J., Yao, J. (2009). eBay: An e-titan success story. Cases in Managing e-Services.

Wang, J., Xing, R. (2009). The Firefly Effect: Build teams that capture creativity and catapult results (pp. 259). NJ: IJSSS Publication.

Wang, J., Xing, R. (2009). Rethinking Project Management: An Organizational Perspective (4th ed., vol. 1, pp. 345). NY: IJPOM Publication, Prentice Hall.

Wang, J., Yao, J. (2009). eBay: An e-titan success story. Cases in Managing e-Services.

Wang, Y. (Author Only), **Weston, S.** (Presenter Only), 2010 Northeastern Recreation Research Symposium, "Day-Trippers and Weekend Travelers: An Exploration of Travel Behavior Differences," Bolton Landing, NY. (April 12, 2010).

Wang, Y. (Author Only), McDonald, J. M. (Presenter Only), the 19th IAGG World Congress of Gerontology and Geriatrics, "The influence of race and income on health-related quality of life among older diabetics and non-diabetics," Paris, France. (July 7, 2009).

Wang, Y., Weston, S., Lin, L.-C., Kim, S. (2009). Segmenting the mature travel market with data mining tools (vol. IV, pp. 1759-1764). The Encyclopedia of Data Warehousing and Mining (2nd Ed.).

Wang, Z., **Wang, Y.** Service Science for Socio-Economical and Information Systems Advancement: Holistic Methodologies (2nd ed., vol. 2). Hershey, PA: International Journal of Information Systems in the Service Sector.

Wang, Y. Ageing Travel Market and Accessibility Requirements. Accessible Tourism: Concepts and Issues.

Wang, Y. (Author Only), **Weston, S.** (Presenter Only), 2010 Northeastern Recreation Research Symposium, "Day-Trippers and Weekend Travelers: An Exploration of Travel Behavior Differences," Bolton Landing, NY. (April 12, 2010).

Xing, R. (Presenter & Author), **Peterson, R.** (Author Only), **Wang, J.** (Author Only), 2nd General Business Conference, "IT Does Matter," Sam Houston University, Houston, TX. (April 9, 2010).

Xing, R. (Presenter & Author), **Peterson, R.** (Presenter & Author), Brownbag, "Redefining Information Technology in 21st century (II)," MSU-SBUS, MSU. (November 11, 2009).

Xing, R. (Presenter & Author), **Peterson, R.** (Presenter Only), Brownbag, "Redefining IT in the 21st Century (I)," MSU-SBUS, MSU. (September 23, 2009).

Xing, R. (Presenter & Author), **Peterson, R.** (Author Only), Wang, J. (Author Only), 2nd General Business Conference, "IT Does Matter," Sam Houston University, Houston, TX. (April 9, 2010).

Xing, R. (Presenter & Author), 3rd Research Symposium of the Society of Global Business and Economic Development, "Innovation sin Broadband Technology & US Competitiveness," MSU, Barcelona, Spain. (June 18, 2010).

Xing, R. (Presenter & Author), **Peterson, R.** (Author Only), Wang, J. (Author Only), 2nd General Business Conference, "IT Does Matter," Sam Houston University, Houston, TX. (April 9, 2010).

Xing, R. (Presenter & Author), **Peterson, R.** (Presenter & Author), Brownbag, "Redefining Information Technology in 21st century (II)," MSU-SBUS, MSU. (November 11, 2009).

Yang, J. (Author Only), **Jeffers, A.** (Presenter & Author), Annual Conference of International Academy of Business and Economics, "Overview of the New Accounting Standards of FASB Nos. 141R and 160.," International Academy of Business and Economics, Plaza Hotel, Las Vegas, Nevada. (October 18, 2009).

Yao, J., Xing, R., Wang, J. (2010). Instructional technology applications in corporate world (ed., vol. II, pp. In press - TBD). China People's University Press, Beijing: Educational Technology.

Yu, S., Lord, R. A., Webb, G. (2010). The Hot-Growth Companies: How Well Do Analysts Predict Their Performance. *Journal of Economics and Business*, 62(3), 195-219.

Yu, S., Lord, R. A. (2010). Selected Papers from the Annual Meeting of the Southwestern Finance Association in 2009 (ed., vol. 36(8)). *Managerial Finance*, Emerald Group Publishing Limited.

Yu, S., Lord, R. A. (2010). Selected Papers from the Annual Meeting of the Southern Finance Association in 2008 (ed., vol. 36(7)). *Managerial Finance*, Emerald Group Publishing Limited.

Yu, S., South-Western Finance Association, "Is the Gold-to-Silver Price Ratio a Valid Indicator for Investment Strategies based on Sector, Style, or Size?," Dallas, Texas. (March 2010).

Yu, S., Leistikow, D., Southern Finance Association, "Abnormal Stock Returns, for the Event Firm and its Rivals, Following the Event Firm's Large One-day Stock Price Drop," Captiva Island, Florida. (November 2009).

COLLEGE OF HUMANITIES AND SOCIAL SCIENCES (CHSS)

Books

Afzal-Khan, F. *Labore with Love: Growing Up with Girlfriends Pakistani Style* (Syracuse University Press, 2010).

Besen-Cassino, Y. (with D. Cassino). *Consuming Politics: Jon Stewart. Branding and the Youth Vote in America* (Farleigh Dickinson Press, 2009).

Eller, C. *Gentlemen and Amazons: The Myth of Matriarchal Prehistory, 1861-1900* (University of California Press, 2010).

Feldman, A. and J. Hana. *A Resource-light Approach to Morphosyntactic Tagging* (Rodopi Press, 2010).

Freed, A. (Ed. with S. Ehrlich). "*Why Do You Ask?*" *The Function of Questions in Institutional Discourse* (Oxford University Press, 2010).

Pole, A. (with E. Schneier and J. Murtaugh) *New York Politics: A Tale of Two States*, 2nd edition. (ME Sharpe, 2009).

Pole, A. *Blogging the Political: Politics and Participation in a Networked Society* (Routledge, 2010).

Ragin, D. *Health Psychology: an Interdisciplinary Approach* (Pearson/Prentice Hall, 2010).

Trubiano, M. *Ennio Flaiano and His Italy: Postcards from a Changing World* (Farleigh Dickinson University Press, 2010).

Zilney, L. *Drugs: Policy, Social Costs, Crime & justice* (Prentice Hall, 2010).

Selected Academic Honors and Awards

Carnevale, N. National Endowment for the Humanities Fellowship, Awarded Spring 2010

Galef, M. Columnist for *Inside Higher Education*

McCaffrey, K. Addressed President's Task Force on Puerto Rico's Status at invitation of the Task Force, May, 2010

Morrissey, M. Fulbright Sociology Review Board, Appointed Summer 2010

Oppenheim, L. NJ Governor's Council on Mental Health Stigma Ambassador Award (March, 2010)

Somers-Willett, S. Winner of 2010 Gracie Award from Alliance for Women in Media, for poems and radio pieces on working poor women aired on WNYC's Studio 360.

Taylor, M. 2010 NACADA Outstanding Advising Certificate of Merit in the Faculty Advising category

Waters, G. Chairman, New Jersey Council for the Humanities.

Woodard, J. Fulbright Scholar Grant, Brazil, Spring 2010.

COLLEGE OF EDUCATION AND HUMAN SERVICES (CEHS)

BOOKS PUBLISHED

Feldman, C. (2009). *Ancient Roman Dining*. Saarbrücken, Germany: Vdm-Verlag.

Gregory, M. (Ed). (2009). *Filosofiaa Lapsille & Nuorille: Kaytannon Kasikirja Ajattelutaidot, Niin & Nain [Philosophy for Children & Young People: Practical Handbook for Thinking Skills, Etc.]*, Finnish translation by Jarkko S. Tuusvuori. Tampere, Finland: European Philosophy Society.

McDonald, J., **Klein, E. J.**, & Riordan, M. (2009). *Going to scale with new school designs: Reinventing high school*. NY: Teachers College Press.

Knobel, M. and Lankshear, C. (Eds.). (2010). *DIY Media: Sharing, creating and learning with new media*. New York: Peter Lang.

Price, S.J., **Price, C.A.**, & McKenry, P.C. (Eds.). (2010). *Families and Change: Coping with Stressful Events and Transitions* (4th Ed). Thousand Oaks, CA: Sage Publications.

OTHER PUBLICATIONS

Bai, Y., Middlestadt, S. E., Peng, C.-Y. J., & Fly, A. D. (2010). Predictors of continuation of exclusive breastfeeding for the first six months of life. *Journal of Human Lactation*, 26(1), 26-34.

Bai, Y., **Wunderlich, S.**, Piemonte, J. (2010). Is prevention cost effective for controlling long term care costs? *Clinical Geriatrics*, 18 (6), 46-47.

Bauer, K. (2010). Gaining Cultural Competence in Community Nutrition. In Boyle, M. and Holben, D. (Eds.) *Community Nutrition in Action: An Entrepreneurial Approach*. Belmont, CA: Wadsworth/Thomson Learning.

Evenson, K.R., Murray, D., **Birnbaum, A.S.**, Cohen D.A. (2010). Examination of perceived neighborhood characteristics and transportation on changes in physical activity and sedentary behavior: The trial of activity in adolescent girls. *Health and Place*, 16(5):977- 985.

Nichols T.R., **Birnbaum, A.S.**, Bryant K., Botvin G.J. (2009). Lunchtime practices and problem behaviors among multi-ethnic urban youth. *Health Education and Behavior*, 36(3):570-582.

Bulkley, K.E., Olah, L.N. & Blanc, S. (Eds.) (2010). Benchmarks for success? Interim assessments as a strategy for educational improvement. *Peabody Journal of Education*, 85(2).

Bulkley, K.E., Christman, J.B., Goertz, M. & Lawrence, N. (2010). Building with benchmarks: The role of the district in Philadelphia's benchmark assessment system. *Peabody Journal of Education*, 85(2), 186-204.

Blanc, S., Christman, J.B., Liu, R., Mitchell, C., Travers, E. & **Bulkley, K. E.** (2010). Learning to learn from data: Benchmarks and instructional communities. *Peabody Journal of Education*, 85(2), 205-225.

Bulkley, K.E., Olah, L.N. & Blanc, S. (2010). Benchmarks for success? Why study interim assessments as a strategy for educational improvement? *Peabody Journal of Education*, 85(2), 115-124.

Erwin, E. J., Brotherson, M. J., Palmer, S., Cook, C., Weigel, C. & Summers, J. A. (2009). Promoting self-determination for young children with disabilities: Evidenced-based strategies for practitioners and families. *Young Exceptional Children*. 12/(2), 27-37.

Erwin, E. J. (2010). Growing up happy and independent: What parents can do to promote self-determination in the early years. <http://www.pbs.org/parents/specialneeds/>.

Erwin, E.J. & Lederer, S. H. (2010). Let's practice yoga: The promise and practice of yoga for kids with disabilities. <http://www.pbs.org/parents/specialneeds/>.

Feldman, C., Briceno Pinar, E., Konas, D., Ruskin, M., Toney, J. & **Wunderlich, S.** (2009). A laboratory analysis of total fat content and an examination of portion size of foods served in four New Jersey public middle school foodservice operations. *Journal of Foodservice*, 20(6)6: 264–274.

Fives, H. & Buehl, M. M. (2010). Examining the Factor Structure of the Teacher Sense of Efficacy Scale. *The Journal of Experimental Education*, 78, 118-134.

Fives, H. & Looney, L. (2009). College Instructors Sense of Teaching and Collective Efficacy. *International Journal of Teaching and Learning in Higher Education*, 20(2), 182-191. <http://www.isetl.org/ijtlhe/pdf/IJTLHE330.pdf>

Fives, H., & Buehl, M. M. (2010). 'Teachers' Articulation of Pedagogical Knowledge Beliefs: Conceptualizing a Belief Framework. In L. D. Bendixen & F. C. Haerle (Eds.) *Personal Epistemology in the Classroom: Theory, Research, and Implications for Practice*. Cambridge University Press.

Gager, C. T. & Yabiku, S. T. (2010). Who has the time?: The relationship between household labor time and sexual frequency. *Journal of Family Issues*, 31, 135-63.

Yabiku, S. T. & **Gager, C. T.** (2009). Sexual frequency and the stability of marital and cohabiting unions. *Journal of Marriage and Family*, 7, 983-1000.

Gager, C. T., Sanchez, L. A., & DeMaris, A. (2009). Whose time is it?: The effect of gender, employment, and work/family stress on adolescent's housework. *Journal of Family Issues*, 30, 1459-1485.

Goldstein, S. E., & Tisak, M. S. (2010). Early adolescents' social reasoning about relational aggression. *Journal of Child and Family Studies*, 471-482.

Gregory, M. and Laverty, M., guest editors. (2010). Special Issue on Philosophy, Education and the Care of the Self. *Thinking: The Journal of Philosophy for Children*, 19(4).

Gregory, M. (2009). A Framework for Facilitating Classroom Dialogue. In Marsal, E., Dobashi, T. and Weber, B. (Eds.), *Children Philosophize Worldwide: Theoretical and Practical Concepts*. Frankfurt & New York: Peter Lang Verlag.

Gregory, M. (2009). Normative Dialogue Types in Philosophy for Children. In Marsal, E., Dobashi, T. and Weber, B. (Eds.), *Children Philosophize Worldwide: Theoretical and Practical Concepts*. Frankfurt & New York: Peter Lang Verlag.

Gregory, M. (2009). Ethics Education and the Practice of Wisdom. *Teaching Ethics* 9(2), 105-30, with Commentary by Karen Mizell.

Gregory, M. (2009). Making the Break: The Ethics of Disassociation and Exclusion in a Value-Oriented Educational Association. *Theory in Action*, 2(3) 75-86.

Gregory, M. (2009). Haroutunian-Gordon, S.: *Learning to Teach Through Discussion: The Art of Turning the Soul*. New Haven: Yale University Press. Reviewed in *Teachers College Record*, June 07, 2010 (<http://www.tcrecord.org>, ID Number: 16007, accessed 6/8/2010).

Gregory, M., Sharp, A.M. (2009). Towards a Feminist Philosophy of Education. *Thinking: The Journal of Philosophy for Children*, 19 (2-3), 87-96.

Juniu, S., Salazar, C.G. (2010). Significados de la palabra “esparcimiento” para estudiantes de la Universidad de Costarica y de Montclair State University. The meaning of the word “leisure” for students from the University of Costa Rica and Montclair State University. *Actualidades Investigativas en Educación*, 10(1), 1 – 28.

Juniu, S. (2009). Computer mediated parent-teacher communication. La comunicación entre padre-maestro mediada por computadoras. *Actualidades Investigativas en Educación*, 9(3), 1 - 19.

Juniu, S. (2009). The Transformation of Leisure. *Leisure/Loisir*, 33(2), 1 - 16.

Kennedy, D., Kennedy, N.S. (2010). Between Chaos and Entropy: Community of Inquiry from a Systems Perspective. *Complicity: An International Journal of Complexity and Education*, 7(2).

Kennedy, D. (2010). Review of M. Lipman, *A Life Teaching Thinking*. *Thinking* 20, 1-2.

Kennedy, D. (2010). Review of Kellner, D. Lewis, T., Peirce, C. & Cho, D., *Marcuse's Challenge to Education*, in *Teachers College Record*.

Kennedy, D. (2010). Review of C. & J. Robelin, *What is a Man? A Dialogue Between Leo the Wise Dog and his Philosopher*, in *Inquiry* 25, 1 .

Klein, E. J. & Riordan, M. (2009). Putting professional development into practice: A framework for how teachers in Expeditionary Learning Schools implement professional development. *Teacher Education Quarterly*. 36 (4), 61-80.

Klein, E. J., Riordan, M., Sotirhos, S., Schwartz, A. (2009). Caring and community: Analyzing a dissertation support group as a community of practice using Noddings' ethic of care. In A. Samaras, C. Beck, A. Freese, & C. Kosnik (Eds), *Learning communities in practice*. Dordrecht, The Netherlands: Springer Press.

Lee, S., Meszaros, P. S., & Colvin, J. (2009). Cutting the wireless cord: effects of college student cell phone use and attachment to family and peers. *Journal of Marriage and Family Review*, 45(6), 717-739.

Balkin, R.S., Schlosser, L.Z., & **Levitt, D.H.** (2009). Religious identity and cultural diversity: Exploring the relationships between religious identity, homophobia, sexism, and multicultural competence. *Journal of Counseling and Development*, 87, 420-427.

Levitt, D.H., & Hermon, D. (2009). Career experiences of counselor educators: Early and near-tenure experiences. *Journal of Counselor Preparation and Supervision*, 1, 10-22.

Levitt, D.H. (2009). Helping students with eating disorders and body image concerns. In B.J. Erford (Ed.), *The Professional School Counselor's Handbook (2nd ed.)*. Austin, TX: Pro-Ed, Inc.

Meszaros, P. S., Creamer, E. G., & **Lee, S.** (2009). Understanding the role of parental support for IT Career decision making using the theory of self-authorship. *International Journal of Consumer Studies*, 33(4), 392-395.

Lankshear, C. and **Knobel, M.** (2010). Remix digital: La nueva escritura global como hibridación sin limites [Trans: Digital remix: the new global writing and endless hybridization]. In E. Lucio-Villegas and A. Guardas (eds), *El Valor de la Palabra: Alfabetizaciones, Liberaciones y Ciudadanías Planetarias* [Trans: The Value of the Word: Literacies, Freedoms and Global Citizens]. Valencia, Spain: Ediciones de Centre de Recursos I Educació Continuada.

Knobel, M., Lankshear, C., and Lewis, M. (2010). AMV Remix: Do-it-yourself anime music videos. In M. Knobel and C. Lankshear (Eds.), *DIY Media: Creating, Sharing and Learning with New Technologies*. New York: Peter Lang. 205-230.

Lankshear, C. and **Knobel, M.** (2010). DIY Media: A contextual background and some contemporary themes. In M. Knobel and C. Lankshear (Eds.), *DIY Media: Creating, Sharing and Learning with New Technologies*. New York: Peter Lang. 1-26.

Lankshear, C. and **Knobel, M.** (2010). Foreword (or, Beyond 'Reify, Measure and Treat'). In S. Shariff and A. Churchill (Eds.), *Truths and Myths about Cyber-Bullying: International Perspectives on Stakeholder Responsibility and Children's Safety*. New York: Peter Lang. xi-xvii.

Lankshear, C. and **Knobel, M.** (2009). More than words: Chris Searle's approach to critical literacy as cultural action. *Race and Class* 51(2): 59-78.

Nesteruk, O. (2010). Heritage language maintenance and loss among the children of Eastern European immigrants in the United States. *Journal of Multilingual and Multicultural Development*, 31(3), 271-286.

Price, C. A., & Nesteruk, O. (2010). Creating retirement paths: Examples from the lives of women. *Journal of Women and Aging*, 22(2), 136-149.

Marks, L. D., Hopkins-Williams, K., Chaney, C., **Nesteruk, O.**, & Sasser, D. (2010). "My kids and wife have been my life": Married African American fathers staying the course. In R. L. Coles & C. Green (Eds.), *The myth of the missing Black father*. New York: Columbia University Press.

Nesteruk, O., & Marks, L. D. (2009). Grandparents across the ocean: Eastern European immigrants' struggle to maintain intergenerational relationships. *Journal of Comparative Family Studies*, 40(1), 77-95.

Nesteruk, O., Marks, L. D., & Garrison, M. E. (2009). Immigrant parents' concerns regarding their children's education in the United States. *Family and Consumer Sciences Research Journal*, 37(4), 422-441.

Price, C.A., & Humble, A. (2010). Stress and coping in later life. In S.J. Price, C.A. Price, & P.C. McKenry (Eds.), *Families and Change: Coping with Stressful Events and Transitions* (4th Ed) (51-71). Thousand Oaks, CA: Sage Publications.

Price, C.A., & Nesteruk, O. (2010). Creating retirement paths: Examples from the lives of women. *Journal of Women & Aging*, 22, 1-14.

Price, S.J., & **Price, C.A.** (2010). Families coping with change: A conceptual overview. In S.J. Price, C.A. Price, & P.C. McKenry (Eds.), *Families and Change: Coping with Stressful Events and Transitions* (4th Ed) (pp.1-23). Thousand Oaks, CA: Sage Publications.

Sheely-Moore, A. & Bratton, S. (2010). A strengths based parenting intervention with low- income African American families. *Professional School Counseling*, 13(3), 175-183.

Sheely-Moore, A. (2010). Child Parent Relationship Therapy with African American parents. In J. Baggerly, D. Ray, & S. Bratton, (Eds.), *Child-centered play therapy research: The Evidence Base for Effective Practice*. Hoboken, NJ: John Wiley & Sons, Inc.

Lee, Y. J., & **Shin, M.** (2009). Rethinking reflective practices in teacher education through looking at in-service teachers' experiences. *Asia-Pacific Journal of Research in Early Childhood Education*, 3(2), 3-21.

Spencer, T. G. (2009). Complicating what it means to "struggle": One child's experience with a mandated literacy initiative. *Contemporary Issues in Early Childhood*, 10(3), 218-231.

Taylor, M., & Coia, L. (2010). Beyond classroom walls: Using self-study to understand our roles as educational researchers in schools. In L. B. Erickson, J. R. Young, S. Pinnegar (Eds.), *Navigating the public and private: Negotiating the diverse landscape of teacher education. Proceedings of the 8th International Conference on Self-Study of Teacher Education Practices*, Herstmonceaux Castle, East Sussex, England. Provo, UT: Brigham Young University.

Urban, J.B., & Trochim, W.M. (2009). The role of evaluation in research-practice integration: Working toward the "golden spike." *American Journal of Evaluation*, 30(4), 538-553.

Urban, J.B., Lewin-Bizan, S., & Lerner, R.M. (2009). The role of neighborhood ecological assets and activity involvement in youth developmental outcomes: Differential impacts of asset poor and asset rich neighborhoods. *Journal of Applied Developmental Psychology*, 30(5), 601-614.

Weinstein, M. (2009). A Metamathematical Model of Emerging Truth. In J.-Y. Béziau & A.Costa-Leite (Eds.), *Dimensions of Logical Concepts*, Coleção CLE Vol.55. Campinas, Brazil.

Wunderlich, S.M., Bai, Y., & Piemonte, J. (2010). Is prevention cost effective for controlling long term care costs? *Clinical Geriatrics*, 18 (6), 46-47.

Wunderlich, S.M., McKinnon, C., Piemonte, J., and Ahmad, Z.N. (2009). Measuring the impact of nutrition education and physical activity on older adults participating in government sponsored programs: examining the assessment tools. *J Nutrition for the Elderly*, 28 (3), 255- 271.

Wunderlich, S., Feldman, C., Briceno-Pinar, E., Konas, D., Ruskin, M., Toney, J. (2009). A laboratory analysis of total fat content and an examination of portion size of foods served in four New Jersey public middle school foodservice operations. *Journal of Foodservice* 20(6)6: 264–274.

COLLEGE OF SCIENCE AND MATHEMATICS (CSAM)

FACULTY PUBLICATIONS:

Alsudani, H. M.L., R. I. Al-Bayati and **M. M. Barbooti,** J. African. 2009. Determination of anions by ion chromatography in water samples of Baghdad city. *Pure and Applied Chemistry* 3: 165-169.

Amal, K., **A. Varde., J. Peng** and **A. Feldman.** 2010. Intelligent time aware query translation for text sources. *Proceedings of the National Conference on Artificial Intelligence (AAAI)*, July, 2010, Atlanta, GA. p. 1935-1936.

Anderson, Colin, **J. Cutler**, A.J. Radcliffe and L. Traldi. 2010. On the interlace polynomial of forests, *Discrete Mathematics* 310: 31-36.

Andra, S.S., K.C. Makris, S. Quazi, **D. Sarkar**, R. Datta and S. Bach. 2010. Organocopper complexes during roxarsone degradation in wastewater lagoons. *Environmental Science Pollution Resource* 17(1): 1167-1173.

Andra, S., R. Datta, **D. Sarkar**, S. Bach and S. Mullen. 2010. Synthesis of phytochelatin in vetiver grass upon lead exposure in the presence of phosphorus. *Plant and Soil* 326(1-2): 171-185.

Antoniou, G.E. and P. Katsalis. 2009. 2D Roger - ramanujan continued fraction and inversion. *IEEE International Symposium on Signals Circuits and Systems*, July 2009, Iasi, Romania p. 53-56.

Antoniou, G.E. 2009. 2D FIR discrete bidiagonal filters: minimal circuit and state space realization. *IEEE International Symposium on Signals Circuits and Systems*, July 2009, Iasi, Romania p. 193-196.

Antoniou, G.E. 2010. Minimal Circuit and State Space realization of 2D all-pole systems with coefficient symmetry. *IEEE Xplore*, 18th Mediterranean Conference on Control and Automation, Marrakesh, Morocco.

Arney, Michael and **Eileen Fernandez**. 2009. The blur of preservice teaching. In Gwen Zimmerman, Patricia Guinee, Linda Fulmor, and Elizabeth Murray (Eds.), *Empowering the Mentor of the Preservice Mathematics Teacher* (pp. 4-5). Reston, VA.: The National Council of Teachers of Mathematics, Inc.

Barbooti, M. M., A. A. Moosa and M. Sh. Jaafar. 2009. Utilization of lime - polyelectrolyte in industrial wastewater treatment for recycle and reuse purposes. *International Review of Chemical Engineering* 1: 484-491.

Barbooti, M. M., M. A. Al-Tae and B. H. Qasim. 2010. Electrothermal atomic absorption spectrophotometric determination of V, Ni and Pb in hydrocarbon polluted soils. *Engineering and Technology* 28: 17-28.

Barry, F., **D.U. Ophori**, J. Hoffman and R. Canace. 2009. Groundwater flow and capture zone analysis of the Central Passaic River Basin, New Jersey. *Environmental Geology*, Vol. 56, pp. 1593-1603.

Berezovsky, F., **B. Song** and C. Castillo-Chavez. 2010. Role of prey dispersal and refuges on predator prey dynamics. *SIAM Journal on Applied Mathematics* 70(6): 1821-1839.

Billings, Lora, Mark I. Dykman, Marie McCrary, A. N. Korotkov, and Ira B. Schwartz. 2010. Switching barrier scaling near bifurcation points for non-Gaussian noise," *Physical Review Letters* 104, 140601.

Bowles, J.A., Hammer, J.E., and **Brachfeld, S.**, 2009. Magnetic and Petrologic Characterization of Synthetic Martian Basalts and Implications for the Surface Magnetization of Mars, *Journal of Geophysical Research, Planets*, 114, No. E10, E10003, 10.1029/2009JE003378.

Brachfeld, S., F. Barletta, G. St-Onge, D. Darby and J. Ortiz. 2009. Impact of diagenesis on the environmental magnetic record from a Holocene sedimentary sequence from the Chukchi-Alaskan margin, Arctic Ocean. *Global and Planetary Change* 68, 100-114.

Camassa, R., B.J.Chung, P. Howard, R.M. McLaughlin and **A. Vaidya**. 2009. Vortex induced oscillations of cylinders at low and intermediate Reynolds numbers. *Advances in Mathematical Fluid Mechanics: A Tribute to Giovanni Paolo Galdi*, Ed. Sequeira, A. and Rannacher, R., Springer Verlag.

Campanella, James J., P.A.X. Bologna, E. Rosenzweig, S. Smith and **J.V. Smalley**. 2010. Population structure of *Zosteramarina* (Eelgrass) on the western Atlantic Coast is characterized by poor connectivity and in breeding. *Journal of Heredity* 101: 61-70.

Campanella, James J., P.A.X. Bologna, E. Rosenzweig, S. Smith and **J.V. Smalley**. 2010. *Zostera marina* (eelgrass) population genetics in Barnegat Bay, New Jersey and implications for grass bed restoration, *Population Ecology* 52(1):181-190.

Chopping, M. 2010. CANAPI: Canopy Analysis with Panchromatic Imagery, *Remote Sensing Letters* 2(1): 21–29, first published on: 17 June 2010 (iFirst) dx.doi.org/10.1080/01431161.2010.486805.

Chopping, M., A.W. Nolin, G.G. Moisen, J.V. Martonchik and M. Bull. 2009. Forest canopy height from the Multiangle Imaging Spectro-Radiometer (MISR) assessed with high resolution discrete return lidar. *Remote Sensing of Environment* 113: 2172-2185.

Tin-Chun Chu, Aline Oliveira, Arti Rana, and **Lee H. Lee**. 2009. Identification of *Synechococcus sp.* IU 625 Phycocyanin Gene and Bioinformatic Analyses of Cyanobacterial *Synechococcus sp.* IU 625. Proceedings of the 2009 International Conference on Bioinformatics & Computational Biology (BIOCOMP 2009) Vol. I: 376-381.

Tin-Chun Chu, Jonathan Jimenez, Lauren Strawn, Michelle Reed, Lauren Pohren and **Lee H. Lee**. 2010. Molecular Probes for the Detection of Cyanophage AS-1 and its Cyanobacterial Hosts. Proceedings of the 2010 International Conference on Bioinformatics & Computational Biology (BIOCOMP 2010) Vol. I: 356-362

Chung, B.J. and **A. Vaidya**. 2010. On the slow motion of a sphere in fluids with non-constant viscosities. *International Journal of Engineering Science*, January 2010, 48: 781-100. doi:10.1016/j.ijengsci.2009.06.010)

B.J.Chung, G.Gipson, A. Shenoy and **A. Vaidya**. 2010. Image analysis of wake structure past cylinders of finite lengths, accepted for publication in the *International Journal of Imagin*.

Colin A., **J. Cutler**, A.J. Radcliffe and L. Traldi . 2010. The interlace polynomial of forest. *Discrete Mathematics* 310: 31-36.

Cutler, Jonathan. 2009. Trees through specified vertices. *Discrete Mathematics* 309: 2749-2754.

Das, P., R. Datta, K. Makris, and D. **Sarkar**. 2010. Vetiver grass is capable of removing TNT from soil in the presence of urea. *Environ. Pollut.* 158(5): 980-983.

- Dellanno, C., **Q. Vega** and D. Boesenberg. 2009. The antiviral action of common household disinfectants and antiseptics against murine hepatitis virus, a potential surrogate for SARS coronavirus. *American Journal of Infection Control* 37: 649-652.
- Dong, Lifeng, R. R. S. Garia, Z. Li, M. M. Craig, **S. Hou**. 2010. Graphene-supported platinum and platinum-ruthenium nanoparticles with high electrocatalytic activity for methanol and ethanol oxidation, *Carbon* 48: 781–787.
- Dong, Qiang, X. Yang and **D. Wang**. 2010. Embedding paths and cycles in 3-Ary n-Cubes with faulty nodes and links. *Information Sciences – Elsevier* 180(1): 198-208.
- Du, C.G.**, N. Fefelova, J. Caronna, L. He and H.K. Dooner. 2009. The polychromatic *Helitron* landscape of the maize genome. *Proceedings of the National Academy of Sciences* 106: 19916-19920.
- Dyer, J.**, H. A. Maina, I.D. Gomez, M. Cadet, S. Oeljeklaus, A.C. Schiedel. 2009. Cloning, Expression and Purification of an Acetoacetyl CoA Thiolase from Sunflower Cotyledon. *Int J Biol Sci* 5:736-744.
- Fails, J.A.**, A. Druin and M.L. Guha. 2010. Mobile collaboration: collaboratively reading and creating children’s stories on mobile devices. In *Proceedings of Interaction Design and Children (IDC)*, June 2010, Barcelona, Spain.
- Fails, J.A.**, A. Druin and M.L. Guha. 2010. Interactive storytelling: Interacting with people, environment, and technology interactive storytelling. *Workshop in coordination with Interaction Design and Children (IDC)*, June 2010, Barcelona, Spain.
- Fan, W., E. Zhong, **J. Peng**, O. Verscheure, K. Zhang, J. Ren, R. Yan and Q. Yang. 2010. Generalized and heuristic-free feature construction, *Proceedings of SLAM International Conference on Data Mining*, May 2010, Columbus, Ohio p.629-640.
- Feldman, A.** and **J. Peng**. 2009. An approach to automatic figurative language detection: A pilot study. *Proceedings of the Corpus-Based Approaches for Figurative Language Colloquium held in conjunction with the Corpus Linguistic, July 20-23, 2009, endorsed by Researching and Applying Metaphor (RaAM)*. July 2009, Liverpool, UK.
- Feldman, C., E.A. Briceno-Pinar, **D.W. Konas**, M. Ruskin, J. Toney and S. Wunderlich. 2009. A laboratory analysis of total fat content and an examination of portion size of foods served in four New Jersey public middle school foodservice operations. *Journal of Foodservice* 20 (6): 264-274.
- Feng, C., **Su, H.**, Wang, H., Tang, W., Tu, X. 2009. Testing Normality for Linear Regression Analysis within a Longitudinal Data Setting. *Far East Journal of Theoretical Statistics*. Vol 28, pp 133-155.
- Feng, H.**, W. Zhang, L. Jia, **M.P. Weinstein**, Q. Zhang, D. Yuan, J. Tao and L. Yu. 2010. Short- and long-term sediment dynamics in western Bohai Bay and coastal areas. *Chinese Journal of Oceanology and Limnology* 28: 583-592.

Feng H., W. Zhang, L. Jia, M.P. Weinstein, Q. Zhang, D. Yuan, J. Tao and L. Yu. 2010. Short- and long-term sediment dynamics in western Bohai Bay and coastal areas. *Chinese Journal of Oceanology and Limnology*, 28(3): 583-592.

Fernández, Eileen. 2009. *A checklist for scheduling observations.* IN: Empowering the Mentor of the Preservice Mathematics Teacher, G. Zimmerman, P. Guinee, L. Fulmor and E. Murray eds. The National Council of Teachers of Mathematics, Inc. p. 35-36.

Fernandez, I. D., **H. Su**, P. C. Winters and H. Liang. 2010. Association of workplace chronic and acute stressors with employee weight status: Data from worksites in turmoil. *Journal of Occupational and Environmental Medicine* 52: S34-S41.

Forgoston, Eric, **Lora Billings**, and Ira B. Schwartz. 2009. Accurate Time Series Prediction in Reduced Stochastic Epidemic Models," *Chaos* 19, 043110. [Abstract](#)

Fuller, E., J. B. Remmel. 2010. Symmetric Functions and Generating Functions for Descents and Major Indices in Compositions. *Annals of Combinatorics*, 14 no. 1, 103-121.

Galster, J.C. 2009. Testing the linear relationship between peak annual river discharge and drainage area using long-term USGS river gauging records, IN: James, L.A., Rathburn, S.L., and Whittecar, G.R., eds., Management and Restoration of Fluvial Systems with Broad Historical Changes and Human Impacts: Geological Society of America Special Paper 451, p. 159-171

Harel, G., **E. Fuller**, & J.M. Rabin. 2009. Attention to Meaning by Algebra Teachers. *Journal of Mathematical Behavior*.

Harel, G. and **E. Fuller.** 2009. *Toward comprehensive perspectives on the learning and teaching of proof part ii: Current contributions.* IN: A Proof Story across the Grades, M. Blanton, D. Stylianou and E. Knuth eds. , pp. 355-370, New York: Routledge

Haywood, A.M., J.L. Smellie, A.C. Ashworth, D.J. Cantrill, F. Florindo, M.J. Hambrey, D. Hill, C.D. Hillenbrand, S.J. Hunter, R.D. Larter, C.H. Lear, **S. Passchier** and R. van de Wal, .2009. *Middle miocene to pliocene history of antarctica and the Southern Ocean.* IN: Antarctic Climate Evolution, F. Florindo, and M. Siegert,(eds.). *Developments in Earth and Environmental Sciences* 8, Elsevier, The Netherlands, p p. 401–463.

Hazard, L.C., D. Shemanski, and K.A. Nagy. 2010. Nutritional quality of natural foods of juvenile and adult Desert Tortoises (*Gopherus agassizii*): Calcium, phosphorus and magnesium digestibility. *Journal of Herpetology* 44(1): 135-147

Hazard, L.C., D. Shemanski and K.A. Nagy.2009. Nutritional quality of natural foods of juvenile Desert Tortoises (*Gopherus agassizii*): Energy, nitrogen, and fiber digestibility. *Journal of Herpetology* 43: 38-48.

Herbert, Katherine G., J. Spirollari, J. T.L. Wang, W. H. Piel, J. Westbrook, W. Barker, Z-Z. Hu, C. H. Wu. 2009. Biological Databases, The Encyclopedia of Computer Science and Engineering, Wiley & Sons, electronic publication, June 12, 2008, hardbound publication, January 2009, 307-317.

Hazard, L.C., D. Shemanski, and K.A. Nagy. 2009. Nutritional quality of natural foods of juvenile Desert Tortoises (*Gopherus agassizii*): Energy, nitrogen, and fiber digestibility. *Journal of Herpetology* 43(1): 38-48. doi: 10.1670/07-160R1.1

Heymsfield S.B., **Thomas, D.M.**, Ngyuen, A.M., Peng J.Z., Martin C.K., Shen W. Strauss BJ, Bosy-Westphal A., Muller M., Weight Loss: Systematic Review of Early Phase Body Composition Changes, to appear in *Obesity Reviews*.

Hou, Shifeng , R. D. Cuellari, N. H. H. Hakimi, K. Patel, P. Shah, **M. Goring** and **S. Brachfeld**. 2009. Amino terminated polyethylene glycol functionalized graphene and its water solubility, *MRS Fall Meeting Symposium L Materials Research Society*, 2010, Warrendale, PA, p. 1205-L02-09.

Huang, L.-S., **H. Su**. 2009. Nonparametric F-Tests for Nested Global and Local Polynomial Models. *Journal of Statistical Planning and Inference*, Vol 139, pp 1372-1380.

Imhoff, M., L. R. Wolfe, D. J. Diner, **M. Chopping**, R. Kahn, V. Salomonson, J. Gille, J. Drummond, D. Edwards, N. Loeb, B. Wielicki, M. Abrams, B. Eng, K. J. Ranson and S.-C. Tsay. 2009. A brief overview of Terra mission results and the carbon cycle, *Geography Compass*: 1749-8198.

Jing, Ju, Haimin Wang, and **John Jenq**. 2009. Feature extraction of EIT EUV images for solar prominence eruption. *International Conference on Cybernetics and Information Technologies System and Applications*, July 2009, Orlando, Florida p. 88-73.

Jing, Ju, Haimin, and **John Jenq**. 2009. EUV images for solar prominence eruption detection. *International Conference on Scientific Computing*. July 2009, Las Vegas, Nevada, p. 69-72.

Jones, M. and **M. Munakata** . 2009. *Coloring and counting rectangles on the board*. IN: Discrete Mathematics Resource Guide, Hopkins, B. ed. Washington D.C. p. 19-30.

Kadam, S., D. Kolluru, **A. Vaidya** and A. Viswanadhuni. 2010. Optimal clusters and architectures in complex networks, accepted for publication in the *Proceedings of the International Conference on Advances in Recent Technologies in Communication & Computing*.

Kerkar P., K.W. Jones, R. Kleinberg, W.B. Lindquist, S. Tomov, **H. Feng** and D. Mahajan. 2009. Direct observations of three dimensional growth of hydrates hosted in porous media. *Applied Physics Letters* 95: , 024102-1 – 024102-3. doi:10.1063/1.3120544

Kaipa, B. and **S.A. Robila**. 2010. Statistical steganalysis of images using open source software, *Proceedings IEEE LISAT* pp.1-5

Kaluarachchi, Amal, **A. Varde, J. Peng** and **A. Feldman**. 2010. Intelligent time-aware query translation for text sources -- In AAAI 2010, Atlanta, Georgia, July 2010.

Kang Y., X. Wang, M. Dai, **H. Feng**, A. Li and Q. Song . 2009. Black carbon and polycyclic aromatic hydrocarbons (PAHs) in surface sediments of China's marginal seas. *Chinese Journal of Oceanology and Limnology* 27: 297-308.

Kollikkathara N., **H. Feng** and **D. Yu**. 2010. A system dynamic modeling approach for evaluating municipal solid waste management issues. *Waste Management*, doi.org/10.1016/j.wasman.2010.05.012

Kollikkathara N., H. Feng and E. Stern . 2009. A purview of waste management evolution: Special emphasis on USA. *Waste Management* 29: 974–985.

Lambroussis, Constantino G., Barbara D. Soares, Sergio Perez, David Gaipa, Anise L. Elie, Caitlin M. Ament, Fahad T. Rouf, Lotfi M. Bassa and **A. M. DiLorenzo**. 2009. Indications of Potential Toxic/Mutagenic Effects of World Trade Center Dust on Human Lung Cell Cultures. *OnLine Journal of Biological Sciences* 9(3): 81-85.

Lee, W. K., R. Scardovelli, **A. D. Trubatch** and **P. Yecko**. 2010. Numerical, experimental, and theoretical investigation of bubble aggregation and deformation in magnetic fluids. *Physical Review* 82: 016302.

Li, A. and M. Munakata. 2009. Building Mathematically. *Mathematics Teacher* 103(1): 14-17.

Li, Aihua, Michael Wilson. 2009. Tracing Certain n-dimensional Space Points, *Pi Mu Epsilon Journal*, Vol. 12, No. 10, 603-612.

Li, Xu, X. Ye, **D. Wang** and L. Lin. 2009. Small-world model based topology optimization strategy for heterogeneous wireless sensor networks. *International Journal of Wireless Communications and Networking* 1(2): 115-125.

Liang, H., **Su, H.**, Thurston, S.W., Meeker, J., Hauser R. 2009. Empirical likelihood based inference for additive partial linear measurement error models. *Statistics and Its Interface*. Vol 2, pp 83-90.

Liotta, F. and **J. Siekierka**. 2010. Apicomplexa, Trypanosoma, and parasitic nematode protein kinases as anti-parasitic therapeutic targets. *Current Opinion on Investigational Drugs* 11: 147-156.

Lisé-Pronovost, A., G. St-Onge, **S. Brachfeld**, Barletta, F., Darby, D. 2009. Paleomagnetic constraints on the Holocene stratigraphy of the Arctic Alaskan margin, *Global and Planetary Change* 68: 85-99.

Long, Liang, **John G. Stevens**, Sumathy Raman, John T. Farrell. 2009. The use of dynamic adaptive chemistry in combustion simulation of gasoline surrogate fuels, *Combustion and Flame*, ISSN: 00102180, Vol: 156, Issue: 7, Date: July, 2009, Pages: 1493-1502.

Maher, C., M. Mueller and **D. Yankelwitz** . 2009. *A comparison of fourth and sixth grade students' reasoning in solving strands of open-ended tasks*. IN: Proceedings of the 33rd annual meeting of the International Group for the Psychology of Mathematics Education M. Tzekaki, M. Kaldrimidou, & H. Sakonidis eds., Thessaloniki, Greece, 4, 73-80.

Makris, K.C., **D. Sarkar**, R. Datta. 2010. Coupling indigenous biostimulation and phytoremediation for the restoration of 2,4,6,-trinitrotoluene-contaminated sites. *Journal of Environmental Monitoring* 12:

299-403.

Markris, K.C., **D. Sarkar**, J. Parson, R. Datta and J.L. Gardea-Torresdey. 2009. X-ray absorption spectroscopy as a tool investigating arsenic(III) and arsenic(V) sorption by an aluminum-based drinking-water treatment residual. *Journal of Hazardous Materials* 171: 980-986.

Makris, K., S. Andra, **D. Sarkar**, R. Datta, and S. Bach. 2009. Do lagoons near concentrated animal feeding operations promote nitrous oxide supersaturation? *Environmental Pollution* 157(6), 1957-1960.

Makris, K., S. Andra, **D. Sarkar**, **M. Hardy**, R. Datta, S. Bach and C. Mullens. 2009. Nitrous oxide supersaturation at the liquid/air interface of animal waste. *Environmental Pollution* 157(12), 3508-3513.

Makris, K., **D. Sarkar**, J. Salazar, P. Punamiya and R. Datta . 2009. Alternative amendment for soluble phosphorus removal from poultry litter. *Environmental Science Pollution Research* 17(1):195-202.

Miller, K. E. And J. A. Smallwood. 2009. Breeding site fidelity of Southeastern American Kestrels (*Falco sparverius paulus*). *Journal of Raptor Research* 43: 369-371.

Mueller, M., **D. Yankelewitz** and C. Maher. 2009. *Challenging the laws of math*. IN: Proceedings of the 33rd annual meeting of the International Group for the Psychology of Mathematics Education, M. Tzekaki, M. Kaldrimidou, and H. Sakonidis eds., Thessaioniki, Greece p. 153-160.

Mueller, M., **D. Yankelewitz** and C. Maher. 2009. A framework for analyzing the collaborative construction of arguments and its interplay with agency. *Proceedings of the 31st annual meeting of the North American Chapter of the International Group for the Psychology of Mathematics Education*. Atlanta, Georgia: Georgia State University p. 276-283.

Mueller, M., **D. Yankelewitz** and C. Maher. 2009. Eliciting student reasoning through problem solving. *Proceedings of the 31st annual meeting of the North American Chapter of the International Group for the Psychology of Mathematics Education*. Atlanta, Georgia: Georgia State University, p. 811-818.

Mukherjee, Bagisa and **A. Mukherjee**. 2009. Fredericksz transition in nematics: effects of non-linear shear profile and elastic anisotropy. *Molecular Crystals and Liquid Crystals* 508: 274-285.

Munakata, M. 2009. Mathematical Representations at the National Art Gallery. *Mathematics and Computer Education* 43: 1

Nagar, R., **D. Sarkar**, K. Makris and R. Datta. 2010. Effect of solution chemistry on arsenic sorption by Fe- and Al-based drinking-water treatment residuals. *Chemosphere* 78(8): 1028-1035.

Nagar, R., K. Makris, **D. Sarkar**, R. Datta and V. Sylvia. 2009. Bioavailability and Bioaccessibility of arsenic in a soil amended with drinking water treatment residuals. *Archives of Environmental Contamination and Toxicology* 57: 755-766.

Nita B.G. 2009. An algorithm for imaging and amplitude correction derived from scattering theory. *International Journal of Tomography and Statistics*, Volume 11, Issue No. FA9, pp. 3-18.

Nita B.G. and Weglein A.B. 2009. Pseudo-depth/intercept-time monotonicity requirements in the inverse scattering algorithm for predicting internal multiple reflections. *Communications in Computational Physics*, Vol. 5, No. 1, pp. 163-182.

Nwachukwu M. A., **H. Feng**, M. Amadi, F.U. Umunna. 2010. The causes and the control of selective pollution of shallow wells by coliform bacteria, Imo River basin Nigeria. *Water Quality, Exposure and Health*, DOI 10.1007/s12403-010-0025-4

Nwachukwu1 M. A., **H. Feng**, K. Achilike. 2010. Integrated study for automobile wastes management and environmentally friendly mechanic villages in the Imo River basin, Nigeria. *African Journal of Environmental Science and Technology* 4(4): 234-249.

Nwachukwu M. A., **H. Feng**, J. Alinno. 2010. Assessment of heavy metal pollution in soil, and their implications within and around mechanic villages. *International Journal of Environmental Science and Technology* 7(2): 347-358.

Okorie, Valentine and **J. Jenq**. 2010. An EMR Tool for Clinics, by, The 4th International Symposium on Bio and Medical Informatics and Cybernetics: BMIC (on CD)

Ophori, D.U. and M. Yidana . 2009. An analysis of groundwater for domestic and irrigation purposes in the Afram Plains, Ghana. *International Conference on Global Food Crises*, Owerri, Nigeria, p. 15.

Peng, J., A. Feldma, and L. Street. 2010. Computing Linear discriminants for idiomatic clause detection, *Research in Computing Science* 46: 17-28.

Platt, D. and **A. Vaidya**. 2010. Fluid Mechanics of the eye and role of the mucus layer. Accepted for publication in the *Proceedings of ASME 2010 3rd Joint US-European Fluids Engineering Summer Meeting*.

Poleshuck, E., Talbot, N.L., **Su, H.**, Tu, X., Chaudron, L., Gamble, S., Giles, D.E. 2009. Pain as a predictor of depression treatment outcomes in women with childhood sexual abuse. *Comprehensive Psychiatry*. Vol 50, pp 215-220.

Pope, Gregory A., A.J. Temples, S. I. McLearn, J. C. Kornoelje and T. J. Glynn. 2009. The nature of boulder-rich deposits in the upper Big Flat Brook drainage, Sussex County, New Jersey. *The Middle States Geographer* 42: 33-43.

Pradhan, A., **A. Varde, J. Peng** and E. Fitzpatrick. 2010. Automatic Classification of Article Errors in L2 Written English, *Proceedings of 23rd Florida Artificial Intelligence Research Society Conference*, (FLAIRS-23).

Pradhan, Aliva, **A. Varde, J. Peng** and E. Fitzpatrick. 2010. Automatic classification of errors in L2 written english. *In FLAIRS 2010*, 2010, Daytona Beach, Florida, p. 256-264.

Prezant, R.S., H.B. Rollins and R.B. Toll. 2010. Post-settlement dispersal of *Mercenaria mercenaria*, St. Catherines Island. IN: Geoarchaeology of St. Catherines and the Georgia Bight. G.A. Bishop, H.R. Rollins and D.H. Thomas (editors). *American Museum of Natural History Anthropology Paper*. In Press.

Punamiya, P., R. Datta, **D. Sarkar**, S. Barber, M. Patel, and P. Das. 2010. Symbiotic role of *Glomus mosseae* in phytoextraction of lead in vetiver grass *Chrysopogon zizanioides*. *Journal of Hazardous Materials* 177: 465-474.

Pye, V.E., C.E. Christensen, **J.H.Dyer**, S.Arent and A.Henriksen . 2010. Peroxisomal plant 3-ketoacyl-coa thiolases structure and activity are regulated by a sensitive redox switch. *Journal of Biological Chemistry*, jbc.M110.106013 First Published on May 12, 2010, doi:10.1074/jbc.M110.106013

Quazi, S., **Sarkar, D.**, Datta, R. 2010. Effect of soil ageing on arsenic fractionation and bioaccessibility in inorganic arsenic pesticide contaminated soils. *Applied Geochem.* [E-pub ahead of print]

Robila , S.A. 2009. Quo vadis face recognition: Spectral considerations, *Proceedings IEEE LISAT 2009*, pp. 1-5.

Robila, S.A., A. LaChance and S. Ruff. 2009. Investigating face recognition from hyperspectral data: Impact of band extraction, *Proceedings SPIE Defense and Security, Algorithms and Technologies for Multispectral, Hyperspectral, and Ultraspectral Imagery XV*, DOI:10.1117/12.817025, 8pp.

Robila, S. A. and L. G. Maciak. 2009. Considerations on parallelizing nonnegative matrix factorization for hyperspectral data unmixing, *IEEE Geosciences and Remote Sensing Letters* 6: 57-61.

Roughton, Gregory, L. McKee, **A. Varde, S. Robila** and J. Liang. 2010. Comparing feature-based and wavelet-based approaches for nanoscale image processing. In *ACM CCSC*, Hartford, Connecticut, April 2010.

Roy, Prasan and **Aparna Varde**. 2010. Proceedings of the 2nd Ph.D. Worksshop in CIKM, PIKM 2008 --- ACM CIKM 2008, Napa Valley, California, October 2010.

Schockling, M. R. Bonce, A. Gutierrez, **S.A. Robila**. 2009. Visualization of hyperspectral images, *Proceedings SPIE Defense and Security, Algorithms and Technologies for Multispectral, Hyperspectral, and Ultraspectral Imagery XV*, 7334, DOI:10.1117/12.818566, 10 pgs, 2009

Schwartz, I.B., **L. Billings**, M.I. Dykman and A. Landsman . 2009. Predicting extinction rates in stochastic epidemic models. *Journal of Statistical Mechanics: Theory and Experiment* P01005.

Shaffer, C.D., C. Alvarez, C. Bailey, D. Barnard, S. Bhalla, C. Chandrasekaran, V. Chandrasekaran, H.-M. Chung, D.R. Dorer, **C. Du**, et al. 2010. The genomics education partnership: Successful integration of research into laboratory classes at a diverse group of undergraduate institutions. *CBE Life Sciences Education* 9: 55-69.

Shaw, Lucas, W. M. Spears, **L. Billings** and P. M. Maxim. 2010. Effective Vaccination Policies, *Information Sciences* , doi:10.1016/j.ins.2010.06.005.

Smallwood, J. A., M. F. Causey, D. H. Mossop, J. R. Klucsarits, B. Robertson, S. Robertson, J. Mason, M. J. Maurer, R. J. Melvin, R. D. Dawson, G. R. Bortolotti, J. W. Parrish, Jr., T. F. Breen, And K. Boyd. 2009. Why are American Kestrel (*Falco sparverius*) populations declining in North America? Evidence from nest box programs. *J. Raptor Research* 43: 274-282.

Smallwood, J. A. and M. W. Collopy. 2009. Southeastern American Kestrels respond to an increase in the availability of nest cavities in Northcentral Florida. *J. Raptor Research* 43: 291-300.

Smallwood, J. A., P. Winkler, G.I. Fowles and M. A. Craddock. 2009. American Kestrel breeding habitat: the importance of patch size. *J. Raptor Research* 43: 308-314.

Sokolowsky, K., M. Newton, C. Lucero, B. Wertheim, J. Freedman, F. Cortazar, J. Czocho, **J.P.M. Schelvis** and Y.M. Gindt. 2010. Spectroscopic and thermodynamic comparisons of *Escherichia coli* DNA Photolyase and *Vibrio cholerae* Cryptochrome 1. *Journal of Physical Chemistry B* 114, 7121-7130.

Stevens, J.G., L. Liang and J.T. Farrell . 2009. A dynamic adaptive chemistry scheme for reactive flow computations. *Proceedings of the Combustion Institute* 32: 527-534.

Stickley, C.E., K.E. St John, N. Koç, R.W. Jordan, **S. Passchier**, R. B. Pearce and L.E. Kearns, 2009. Evidence for middle Eocene Arctic sea ice from diatoms and ice-rafted debris. *Nature* 460: 376-379.

Su, H. and H. Liang. 2010. Comparison of treatment effect – an empirical likelihood based method. *Computational Statistics and Data Analysis* 54: 1079-1088.

Su, H., Qin, Y.S., Liang, H. 2009. Empirical likelihood-based confidence interval of ROC curves. *Statistics in Biopharmaceutical Research*, Vol 1, pp 407-414.

Su, L., Huang, Y., **M.J. Chopping**, A. Rango and J.V. Martonchik. 2009. An empirical study on the utility of BRDF model parameters and topographic parameters for mapping vegetation in a semi-arid region with MISR imagery. *International Journal of Remote Sensing* 30(13): 3463 – 3483.

Suarez, J., K. Rangelova, **J.P.M. Schelvis**, and R.S. Magliozzo. 2009. Antibiotic resistance in *M. tuberculosis*: Peroxidase intermediate bypass causes poor isoniazid activation by the Ser315Gly mutant of *M. tuberculosis* catalase-peroxidase, *Journal of Biological Chemistry* 284: 16146-16155.

Thomas, D.M., S. Das, J.A. Levine, C.K. Martin, L. Mayer, **A.J. McDougall**, B. Strauss and S.B. Heymsfield. 2010. Why Bigger is not better - A mathematical relationship between fat free mass and fat mass. *Nutrition & Metabolism*, 7: 39.

Thomas, D.M., Das S., Levine J., Martin C.K., Mayer L., McDougall A., Strauss B.J., Heymsfield S.B., 2010. New Fat Free Mass – Fat Mass Model for use in a Physiological Energy Balance Equation *Nutrition & Metabolism* 2010, 7:39 (9 May 2010).

Thomas, D.M., A. Ciesla, J.A. Levine, **J.G. Stevens** and C.K. Martin. 2009. A mathematical model of weight change with adaptation. *Mathematical Biosciences and Engineering* 6(4): 873-887.

Thomas, D. M., M. Weederhmann, **L. Billings**, J. Hoffacker and R.A. Washington-Allen. 2009. When to spray: a time-scale calculus approach to controlling the impact of West Nile virus. *Ecology and Society* 14(2): 21.

Tirados, Edward and **J. Jenq**. 2009. Analysis of leading economic indicator data and gross domestic product data using neural network methods, *Journal of Systemics, Cybernetics and Informatics* 7: 51-56.

Varde, Aparna and J. Liang. 2010. Extending a distance metric learning approach to cover non-geometric spaces. In ICML Workshops 2010, Haifa, Israel. , June 2010.

Varde, Aparna, E. Rundensteiner and S. Fahrenholz. 2010. *XML based markup languages for specific domains*. IN: Web-Based Support Systems, Advanced Information and Knowledge Processing, J.T. Yao ed. Springer-Verlag London Limited p.215-238

Varde Varde, Aparna. 2009. *Challenging research issues in data mining, databases and information retrieval*. *ACM SIGKDD Explorations Journal* 11: 49-52.

Varde, Aparna, Fabian Suchanek, Richi Nayak and Pierre Senellart, 2009. Knowledge Discovery over Deep Web, Semantic Web and XML --- In Proceedings of DASFAA 2009, Brisbane, Australia, pp. 784 - 788.

Wang, D. 2010. Clustering mesh-like wireless sensor networks with an energy-efficient scheme. *International Journal of Sensor Networks (IJSNET)* 7: 199–206.

Wang, D. 2010. A power-mitigating scheme for clusterheads in wireless sensor networks, *Ad Hoc & Sensor Wireless Networks (AHSWN)* 9(3-4): 239-253.

Wang, Dajin, L. Xu, **J. Peng** and **S. Robila**. 2009. Subdividing hexagon-clustered wireless sensor networks for power-efficiency. *2009 International Conference on Communications and Mobile Computing (CMC 2009)*, Kunming, China, Jan 6-8, 2009, 454-458.

Wang, Dajin. 2009. An analytical study of subdividing hexagon-clustered WSN for power saving, *IEEE International Conference on Mobile Ad-hoc and Sensor Systems (MASS'09)*, MASS 2009 Proceedings, Macao, Oct 12-15, 2009, 403-412.

Weinstein, M.P. 2009. The road ahead: The sustainability transition and coastal research. *Estuaries and Coasts* 32: 1044-1053.

Weinstein, M.P., S. Y. Litvin, and V.G. Guida. 2009. Essential fish habitat and wetland restoration success: a Tier III approach to the biochemical condition of the common mummichog, *Fundulus heteroclitus* in common reed, *Phragmites australis* and smooth cordgrass, *Spartina alterniflora* dominated salt marshes. *Estuarine Coastal and Shelf Science* 32: 1011-1022.

Weinstein, M.P., S.Y. Litvin and V.G. Guida. 2009. Is global climate change influencing the overwintering distribution of weakfish (*Cynoscion regalis*, Bloch & Schneider, 1801)? *Journal of Fish Biology* 75: 693-698.

- Weinstein, M.P.** (contributing author). 2009. Coastal sensitivity to sea-level rise: a focus on the mid-Atlantic region. *US Climate Science Program, Synthesis and Assessment Product*, 4.1, US Environmental Protection Agency, Washington, DC.
- Wilson, G., S. Pekar, T. Naish, **S. Passchier** and R. DeConto . 2009. *The Oligocene-Miocene boundary – Antarctic climate response to orbital forcing*. IN: Antarctic Climate Evolution, Florindo, F. and M. Siegert (eds) *Developments in Earth and Environmental Sciences*, 8, Elsevier, The Netherlands, pp. 444-465.
- Wu, M.**, D. Kalma, and C. Treadwell. 2009. Assessing hydrology, vegetation, and soil characteristics of Adirondack wetlands. *Journal of Ecological Restoration* 27(4): 396-397.
- Wu, M.** and D. Kalma. 2009. Invasive and non-native species in a small New England watershed. *Journal of Ecological Restoration* 27(2): 14-15.
- Wu, M.** 2009. Wetland destruction, loss and restoration. IN: Lectures in Modern Ecology (IV), Jiangou Wu ed. Higher Education Press, p. 192-215.
- Xeflide, S.K. and **D.U. Ophori**. 2009. An assessment of the time-dependent structure of streams in New Jersey, USA. *Environmental Geology* 58: 785-793.
- Xeflide, S. and **D. Ophori**. 2009. Analysis of reservoir performance metrics of streams, New Jersey, USA. *Journal of Environmental Hydrology* 17: 1-4.
- Xie, S., W. Fan, **J. Peng**, **O. Verscheure** and J. Ren. 2009. Latent space domain transfer between high dimensional overlapping distributions, 18th International World Wide Web Conference (WWW). April 20-24, 2009, Madrid, Spain, p. 91-100.
- Yecko, P.** 2010. Effect of normal and parallel magnetic fields on the stability of interfacial flows of magnetic fluids in channels, *Physics of Fluids* 22: 022103
- Yecko, P.** 2009. Stability of layered channel flow of magnetic fluids, *Physics of Fluids* , vol. 21, 034102
- Yecko, P.** and J. Pohlmeier (MSU student). 2009. Non-normal pulsation, in Nonlinear Pulsations and Hydrodynamics of Cepheids, Eds. M. Goupil, Z. Kollath, N. Nardetto and P. Kervella. *EAS Publication Series Vol. 38, EDP Sciences*, pp. 25-32.
- Yu, Danlin**, N.A. Peterson, M.A. Sheffer, R.J. Reid and J.E. Schnieder. 2010. Tobacco outlet density and demographics: Analysing the relationships with a spatial regression approach. *Public Health*, 124: 412-416.
- Yu, Danlin**, N. A. Peterson, R. J. Reid. 2009. Exploring the impact of non-normality on spatial non-stationarity in geographically weighted regression analyses: Tobacco outlet density in New Jersey. *GIScience & Remote Sensing*. 46: 329-346.
- Yu, Danlin**. 2009. Spatial interpolation via GWR, a plausible alternative? *Proceedings of GeoInformatics 2009*, p. 158.

Zhao, X., S. Yu, K. Ranguelova, J. Suarez, L. Metlitsky, **J.P.M. Schelvis** and R.S. Magliozzo. 2009. Role of the oxyferrous heme intermediate and distal side adduct radical in the catalase activity of *Mycobacterium tuberculosis* KatG revealed by the W107F mutant. *Journal of Biological Chemistry* 284, 7030-7037.

Zhang W., **H. Feng**, J. Chang, J. Qu and L.Yu. 2008. Source of Pb to the Yangtze River intertidal zone based on Pb isotope composition. *Chemical Geology* 257: 260-266.

Zhang L., **H. Feng**, et al. 2009. Heavy metal contaminant remediation study of western Xiamen Bay sediment, China: Laboratory bench scale testing results. *Journal of Hazardous Materials*, 172, 108-116.

Zhang W., **H. Feng**, J. Chang, J. Qu, H. Xie and L. Yu . 2009. Heavy metal contamination in surface sediments of Yangtze River intertidal zone: an assessment from different indexes. *Environmental Pollution* 157: 1533-1543.

Zhao, X., S. Yu, K. Ranguelova, J. Suarez, L. Metlitsky, **J. P. M. Schelvis**, and R. S. Magliozzo. 2009. Role of the Oxyferrous Heme Intermediate and Distal Side Adduct Radical in the Catalase Activity of *Mycobacterium tuberculosis* KatG Revealed by the W107F Mutant, *Journal of Biological Chemistry*. 284, 7030-7037.

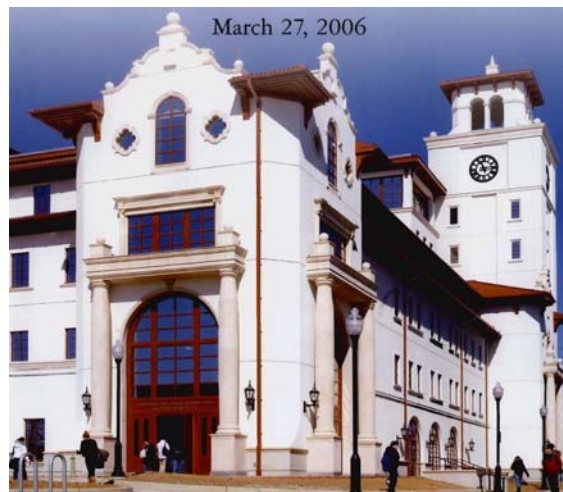
Zhong, E., W. Fan, **J. Peng**, K. Zhang, J. Ren, O. Verscheure and D. Turag. 2009. Cross domain distribution adaptation via kernel mapping. 15th ACM SIGKDD Conference on Knowledge Discovery and Data Mining (KDD). April, 2009, Paris, France, p. 1027-1036.

Zhong, E., W. Fan, **J. Peng**, J. Ren and O. Verscheure. 2009. Universal Learning over Related Distributions and Adaptive Graph Transduction, European Conference on Machine Learning and Principles and Practice of Knowledge Discovery in Databases (ECML PKDD). September, 2009, Slovenia, p. 678-693.

I. Major Capital Projects

Recently Completed Projects

University Hall, a major new academic building (\$80 million), was officially opened in March 2006. Opened for classes in spring 2006, this 270,000 square foot facility houses the College of Education and Human Services; office and instructional space, including a dean's suite; 125 faculty offices; eight specialized learning labs; six department offices; 28 adjunct faculty work stations; the ADP Center for Teacher Preparation and Learning Technology; the Center of Pedagogy; a Literacy Enrichment Center; and the Institute for the Advancement of Philosophy for Children. Classroom space includes eight 100-seat lecture halls and 29 classrooms with 30 to 40 seats. A Conference Center on the 7th floor of the building, providing panoramic views of the Manhattan skyline, accommodates groups of up to 500 persons. Also, all network operations and the University's data center as well as training classrooms, offices and workstations for the Office of Information Technology are housed in the facility.



In April 2006, Montclair State University hosted the grand opening celebration for **The George Segal Gallery**. Located adjacent to the Alexander Kasser Theater Complex, the 7,200-square-foot Gallery is the only gallery space named for Segal in the world. George Segal's sculpture, *Street Crossing*, was installed on The Alexander Kasser Theater plaza in anticipation of the opening.



Construction of a new 77,000 square foot student recreation center (\$23 million) was completed in March 2008. **The Recreation Center** features a six-lane swimming pool, locker rooms, two-court gymnasium with elevated running track, two racquetball courts, strength and cardio training areas, offices and a snack bar. The new facility is located at the Northern end of the campus between Blanton Hall and the Yogi Berra Museum. Modern state of the art exercise equipment has been installed in the exercise areas which are located on the first and second floor. The second floor treadmills provide the user with a breathtaking view of the New York City skyline



The **John J. Cali School of Music** is an adaptive re-use project that transforms a former dormitory and classroom building into a state-of-the-art teaching, practice and performance facility. Opened for classes in fall 2009, the School of Music creates a new “gateway” building for the campus.

Built in 1928 in the Spanish Mission Style, the building originally known as Chapin Hall served as a dormitory until a later renovation transformed it into a classroom and departmental office facility. In 2005, the University commissioned Hillier Architecture to renovate and expand the original structure to establish a new home for the John J. Cali School of Music.

The facility includes a 250-seat recital hall; teaching studios; music practice and rehearsal rooms; and faculty offices. Another goal of the project is to achieve a rating under the U.S. Green Building Council’s Leadership in Energy & Environmental Design (LEED) Sustainable Design Rating System.



Reopened in fall 2009 following extensive renovation, **Panzer Gymnasium** (approximately 70,000 gross square feet) received upgrades to the competition gym, a new building entrance (façade) on College Avenue, interior upgrades, a new electrical system, and extensive upgrades to the present HVAC system.

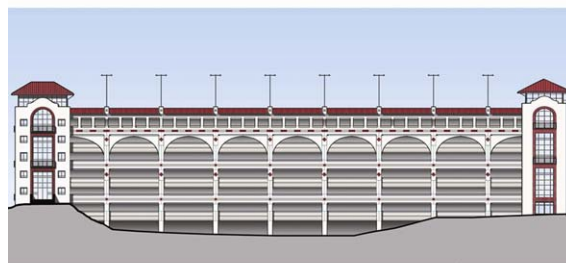


Montclair State University - Panzer Athletic Center
January, 2008

Chicko Green White
Architects
Panzer
Landscape Architects

CarParc Diem

A 5-1/2 story parking structure opened in fall 2010. Located adjacent to Floyd Arena, the structure utilizes existing site conditions to provide approximately 1,100 parking spaces with a net gain of approximately 850 parking spaces. Design queues are consistent with the University's Spanish Mission Style. Advanced design elements allow for future sustainable actions to occur paralleling the activities with University Hall and the United States Green Building Council.



MSU - Parking Garage - East Elevation
April 20, 2009

Chicko Green White
Architects
MSU
Landscape Architects

Frank Sinatra Hall

Opened for occupancy in fall 2010, Frank Sinatra Hall is a 309 bed, 88,655 sq. ft., residence hall designed to meet the needs of the modern higher education student. The upper floors of the six story building each house between 45-50 sophomores in six to eight bed suites, and provide a lounge that promotes social activity among residents. The first floor includes an entry foyer, community resident director suite, three additional bedroom suites, building storage and mechanical, and a multipurpose room to hold both social and academic events. Interior space planning is designed to meet the needs of students who might be physically challenged. The design calls for

minimum energy consumption and maximum maintenance efficiency, while blending with the Spanish Mission architectural style inherent to the campus.



Current Projects

The Heights

Pursuant to the New Jersey Economic Stimulus Act, the new student housing and dining project will provide living space for 2,000 additional resident students and approximately 25,000 gross square feet of dining space on the northern portion of campus in what were formerly parking lots 22 and 23. The developer of this project is Capstone Development of Birmingham, Alabama.



College Avenue Promenade Project

In May 2010, contractors began the process of restoring the historic grandeur to College Avenue as specified in the project's planning and design phase. The scope of work includes new landscaping, lighting, road curbing, sidewalks and site utilities in the area between Normal Avenue and the Red

Hawk Deck. Also included within the parameters of the project is the reconstruction of the historic quad area between Chapin, Freeman and Russ Halls.



Finley Hall Renovation

The project consist of complete renovation of 37,000 S.F.(\$15 million estimated) of an existing two story building down to existing structural elements and new construction to build new classrooms on the first floor and faculty offices on the second floor. The project includes construction of new entrance tower, a new elevator on the south side of the building and a new exterior wall system. This building is designated to be used by the Collage of Humanities and Social Sciences at Montclair State University



Wireless Local Area Network

The University continues to improve upon the technology infrastructure and resources available to the University community to ensure they are able to effectively carry out the University's teaching, learning and research mission.

The University is upgrading its wireless network infrastructure to the high speed, backbone class 802.11n protocol and expanding the coverage to ensure pervasive access to the University's information resources throughout the campus. This \$5 million project will ensure that members of the University community have wireless service in every residence hall, academic space, and administrative building. Coverage will extend to all outdoor areas, including parking lots and garages.

Replacement of the University's Business Systems

Work is well underway on a project to replace the University's legacy business systems with the Oracle/PeopleSoft suite of applications. The program plan for this nearly \$30 million project, known as the Bell Tower Initiative, calls for replacement of all of our major business systems for finance and accounting, human resources and student information and services as well as the addition of a community portal and data warehouse and business intelligence services. The entire project is slated for completion by fall 2012.